

June 2021

# Forestry Initiatives Program

Newsletter

CITY OF  
**Quesnel**

## Fuel Management Trail System Now Open!

Explore the variety of paths at the new Fuel Management Trails, located next to the Quesnel Airport. The hard-packed, low-grade trail system is perfect to walk, bike or run.

- Four loops adding up to 3 kilometres of trails
- Low mobility loop suitable for strollers, scooters, and wheelchairs
- Only 7 minutes from downtown!

### TO ACCESS THE TRAIL HEAD AND PARKING LOT:

Heading North on Quesnel-Hixon Road, turn right 400 metres past the Quesnel & District Cemetery.



- |   |                             |        |
|---|-----------------------------|--------|
| 1 | Rabbit - Goh (low Mobility) | 538 m  |
| 2 | Fox - Nanguz                | 838 m  |
| 3 | Deer - Yests'e              | 564 m  |
| 4 | Grizzly - Shas              | 1.1 km |

The new trails meander through a fuel managed demonstration forest, where trail users can experience what a fuel treated stand of trees looks like. There is also an educational kiosk with information on wildfires and fuel management.



### ENJOY THE TRAILS FOR A VARIETY OF USES:

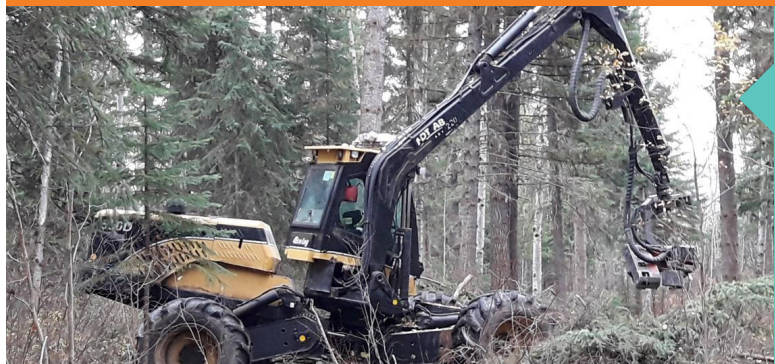
- Quick nature walk close to town
- Trail run during a lunch break
- Longer hike to explore the forest
- Tour the low-mobility loop

For more information about the Forestry Initiatives Program, please visit [www.quesnel.ca/forestry-initiatives](http://www.quesnel.ca/forestry-initiatives)



# Reducing our Wildfire Risk

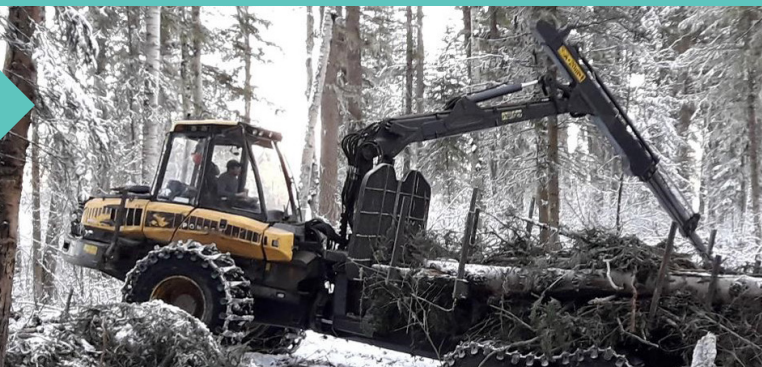
This 30.9 hectare site was classified as high risk while developing the Community Wildfire Protection Plan (CWPP). The Forest Enhancement Society of B.C.(FESBC) together with the City of Quesnel coordinated and funded an innovative mechanized thinning and biomass removal project in 2019. The overall objective was to reduce the wildfire threat while maintaining the long term health of the stand of trees.



- A harvester thinned the stand, felling and processing merchantable logs along with non-merchantable trees. This material was sorted into separate piles.
- A crew manually pruned the remaining trees up to 3 metres and also felled small stems less than 10 centimetres in diameter.

The pruned branches and small stems were piled with the other biomass.

- A forwarder moved the merchantable stems and biomass piles to the roadside, where a grinder processed the biomass into hog fuel which was shipped to a local mill.



- After forwarding was completed, any remaining dispersed debris was manually piled and fed to a portable chipper that was pulled through the site by a skid steer machine.
- Result: Drastically reduced chance of spreading wildfire into the community!



Scan the code to explore the trail system on a virtual ride along with Mayor Bob Simpson



[Or Click here to View](#)

