



Three Rivers Community Forestry

Lessons, Opportunities, and the
Path Forward

Presented by: Nick Pickles

TRCF Overview

Community Forest Agreement signed:
October 2024

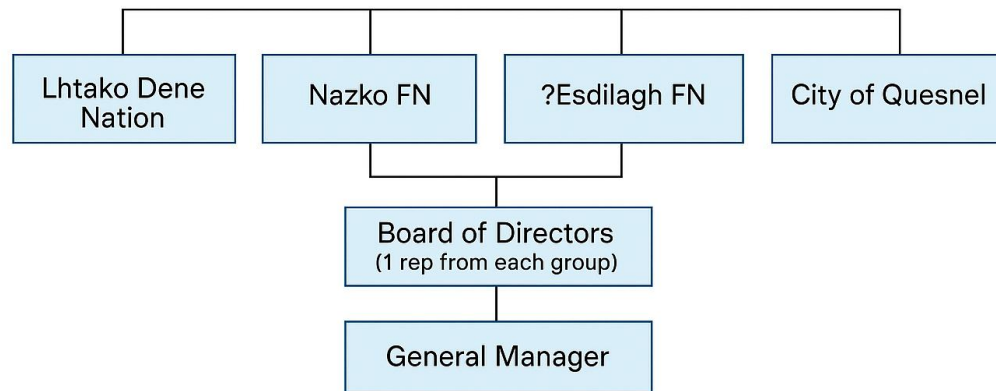
Shareholders: Esdilagh, Lhtacko Dene,
Nazko and City of Quesnel

Mandate: Stewardship, ecological
resilience, community benefit

Area: 38,223 ha

AAC: 42,850m³ Conifer
10,500m³ Deciduous

Three Rivers Community Forest



Governance: Shared vision between diverse shareholders

Relationships: Trust and engagement smooth operations

A close-up photograph of a person's hand holding a small, round, silver-colored compass. The hand is positioned on the left side of the frame, with fingers visible. The compass face is black with white markings for degrees (100, 120, 140, 160) and cardinal directions (S, SE). The needle is pointing towards the top-left. The background is dark and out of focus.

Navigating Legacy Challenges

- No tenure type has a legislated guarantee to AAC
- Apportionment is discretionary — shaped by policy, not embedded frameworks
- No guaranteed space = limited long-term planning certainty
- Tenure approvals can be delayed due to overlap with existing allocations
- Community and Indigenous-led models navigate a reactive process
- The current system wasn't designed for structural inclusion
- Result: tension, short-term workarounds, and underutilized potential

A close-up photograph of a hand holding a small, round, silver-colored compass. The hand is positioned on the left side of the frame, with fingers visible. The compass face is black with white markings for degrees (100, 120, 140, 160) and cardinal directions (S, SE). The needle is pointing towards the top-left. The background is dark and out of focus.

Navigating Legacy Challenges

- ▶ **Speed without continuity risks missing critical pieces**
When transitions happen mid-process, key context and relationships can get lost.
- ▶ **Coordination gaps affect everyone**
Misalignment between teams or timelines can disrupt referrals, overlap development, and delay implementation.
- ▶ **When alignment breaks down, the pressure lands locally**
Communities and tenure holders are often left to absorb the fallout.

Communication and Trust Building

Strong relationships don't just appear — they're reinforced in small, consistent ways.

Early clarity avoids late friction — especially when timelines tighten.

Listening before acting has proven more effective than assuming alignment.

Priorities shift, staff rotate, and mandates evolve — staying connected keeps the pieces moving together.

Everyone's operating at capacity Communication not only keeps things aligned — it creates accountability without needing to escalate.

Planning for a Resilient Landscape



Fuel mitigation

Targeted treatments reduce wildfire risk and protect homes, infrastructure, and timber supply.



Ecosystem restoration

Repairing riparian areas, degraded stands, and culturally important spaces.



Adaptive silviculture

Adjusting species mix and spacing to improve resilience — and generate **higher value per hectare** over time.



Cultural resilience

Embedding traditional knowledge and land use into forest planning and stewardship.



Operational resilience

Supporting local contractors, employment, and milling capacity to ensure plans become practice.



Social resilience

Building public trust and community support through transparency and inclusion

Innovation & Planning

- **Early-stage planning is where outcomes are shaped**

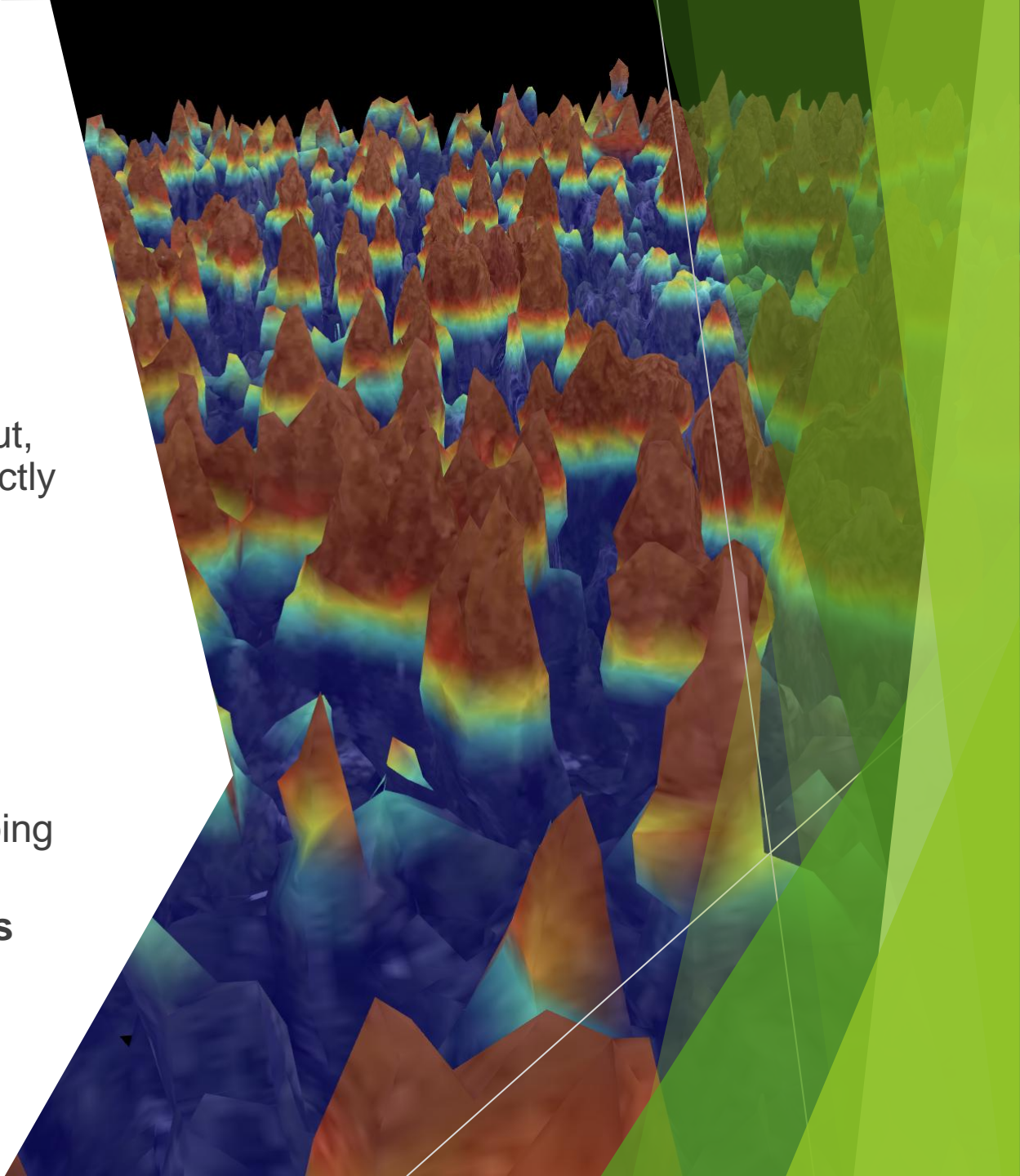
Block design, access layout, and retention strategy directly influence ecological resilience.

- **Innovation is already happening**

Partial cuts, ecosystem-based planning, LiDAR-informed layout — these aren't theoretical, we're doing them.

- **Emerging professionals are driving it**

Young foresters and techs bring fresh thinking, digital tools, and a long-view mindset.



Innovation and Operations

- ▶ **Modern equipment and techniques**
Low-impact systems — like harvester/forwarder setups — reduce soil disturbance and protect long-term site productivity.
- ▶ **Fibre utilization**
Skilled operators improve efficiency and increase value per hectare through careful extraction and reduced waste.
- ▶ **Complex prescriptions require capability**
Fuel breaks, retention harvesting, and ecosystem-based cuts rely on precision and good judgement in the cab.
- ▶ **Training builds long-term resilience**
Investing in local people ensures sustainable practices are safely and consistently implemented.
- ▶ **TRCF helped secure funding for training**
The operator training program supports the next generation of hands-on forest stewards.

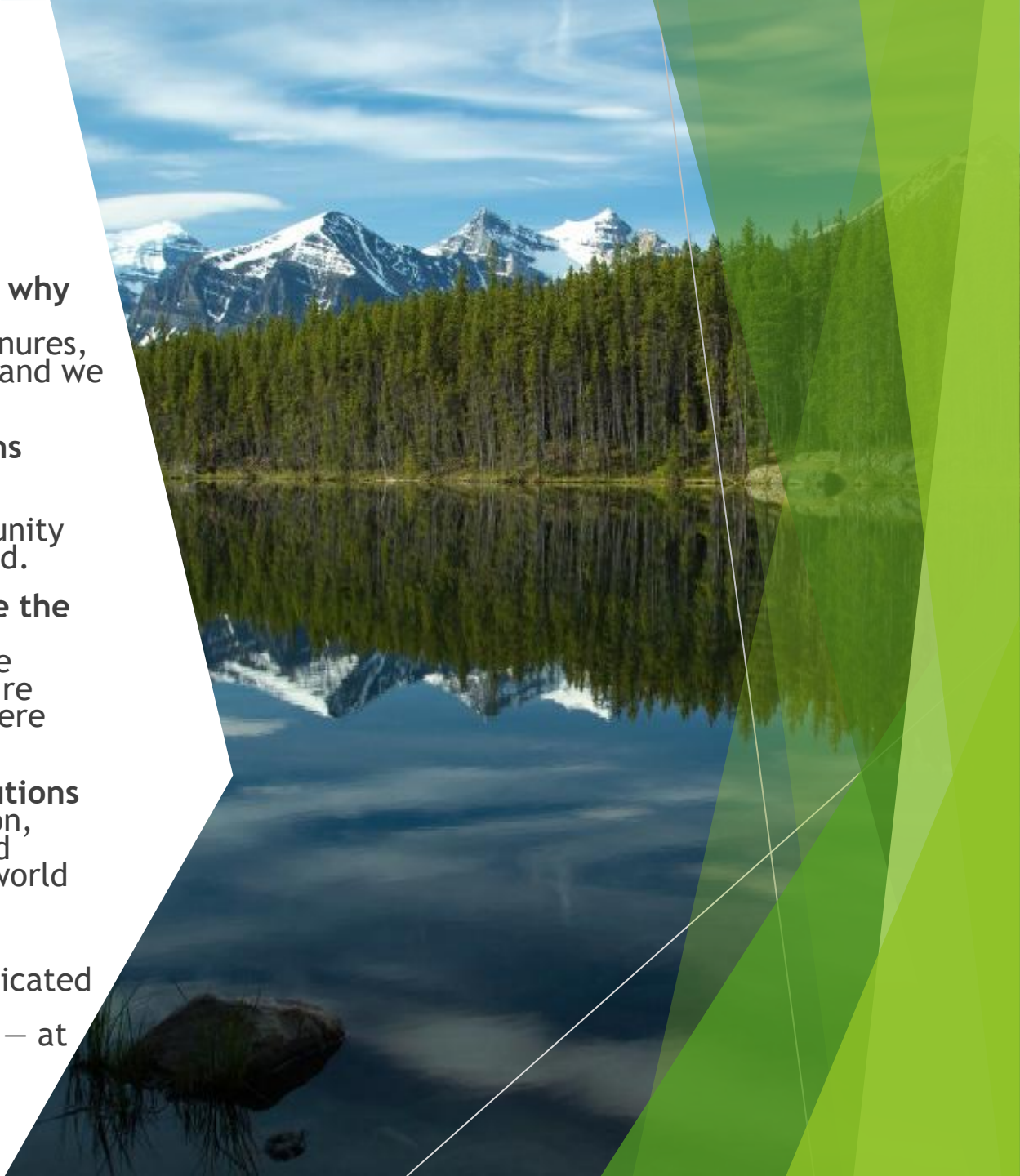


- ▶ **CFAs offer flexibility to act locally and adapt quickly**
Decision-making is informed by real-time feedback from the landscape and the community.
- ▶ **Accountability is built-in**
We're answerable to our shareholders — and to the people who live and work here.
- ▶ **Innovation is tested in working forests**
This isn't theory — we implement, adapt, and iterate in live operations.
- ▶ **CFAs can accelerate meaningful change if supported**
What we prove locally has potential to scale — if the system is willing to make space for it.

Community Forest as a Proof of Concept

Final Reflections

- ▶ **Large, shared landscapes are complex — and that's exactly why local leadership matters**
CFAs operate where values, tenures, and responsibilities overlap — and we find ways to move forward.
- ▶ **No mandated allocation means missed potential**
Without secure space in AAC apportionment, proven community models remain under-leveraged.
- ▶ **System friction reveals where the process needs refinement**
Coordination delays and tenure overlap aren't failures — they're pressure points pointing to where change is needed.
- ▶ **CFAs are already piloting solutions**
We're delivering fuel mitigation, ecosystem-based planning, and training programs under real-world conditions.
- ▶ **The opportunity is clear**
With policy alignment and dedicated space, community forests can accelerate meaningful change — at scale



Thank You

