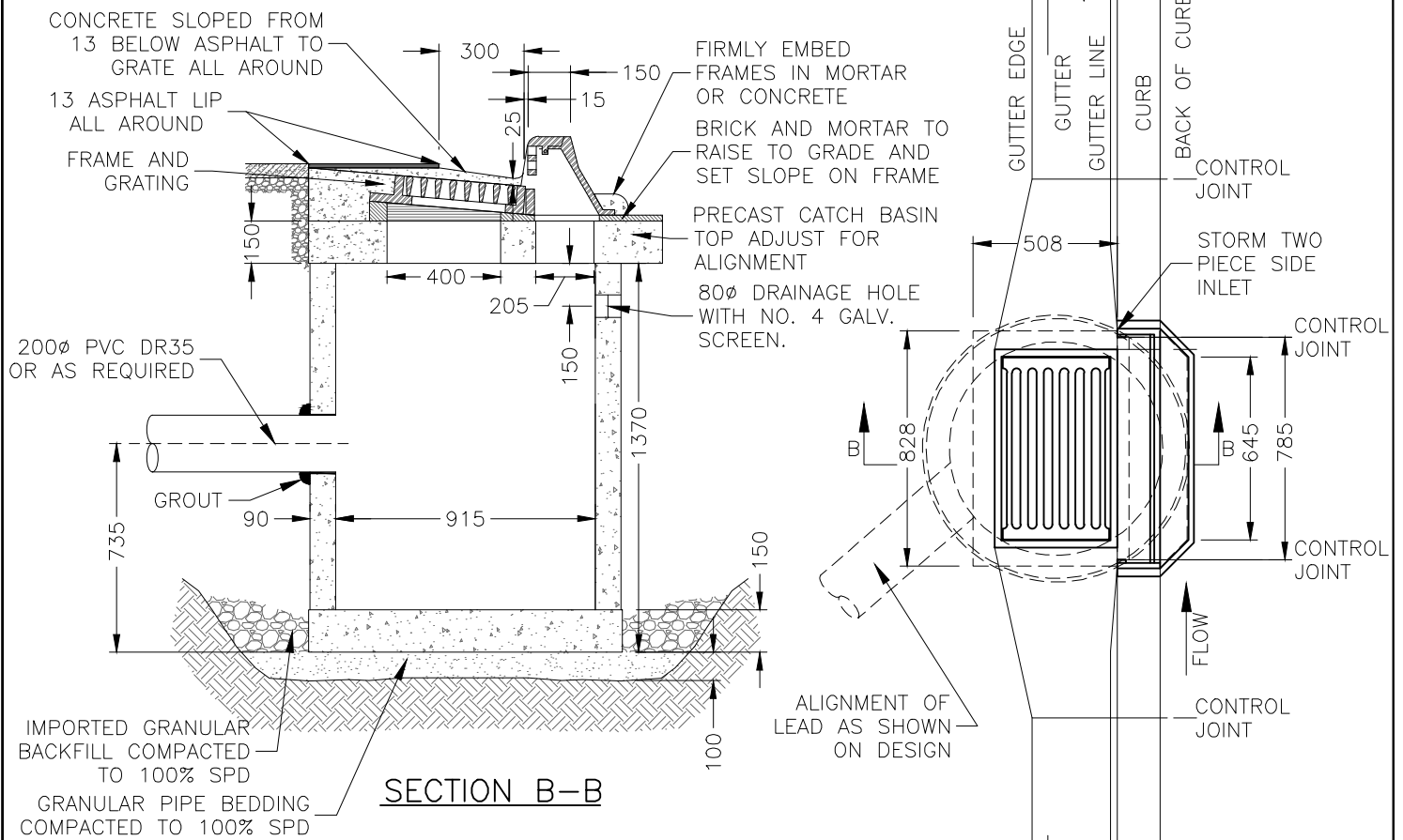
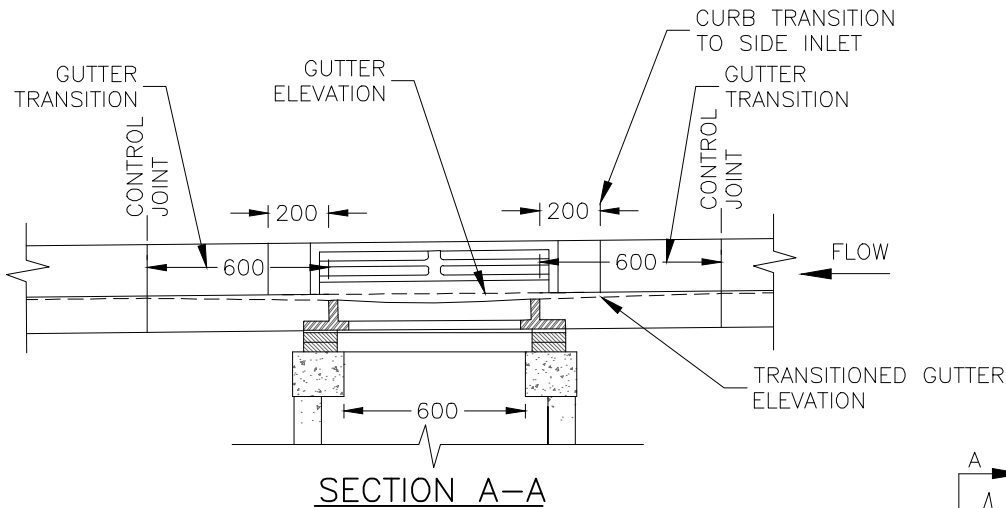


\\usi.urban-systems.com\projects\Projects_VAN\1190\0186\01\0-D-Design\CAD\20_PROD\SET 1\ACAD-DET - 1190018601 Utility Details.dwg, SS11B, 2020/07/10 03:41 pm rthomson



GUTTER TRANSITION

NOTES:

1. PRECAST UNITS c/w BASE, APPROVED BY APPROVING OFFICER, ARE ACCEPTABLE
2. CATCH BASIN LEADS TO EXTEND NO MORE THAN 20mm INTO BARREL
3. 200Ø PVC DR35 OR AS REQUIRED FOR SINGLE CATCH BASIN LEAD
4. 250Ø PVC DR35 OR AS REQUIRED FOR TWO CATCH BASINS CONNECTED IN SERIES



SCALE: NOT TO SCALE
DATE DRAWN: 2020-07-10
APPROVED BY:

TITLE: TOP AND SIDE INLET CATCH BASIN		
SECTION:	REVISION No.	DWG.No. SS11B