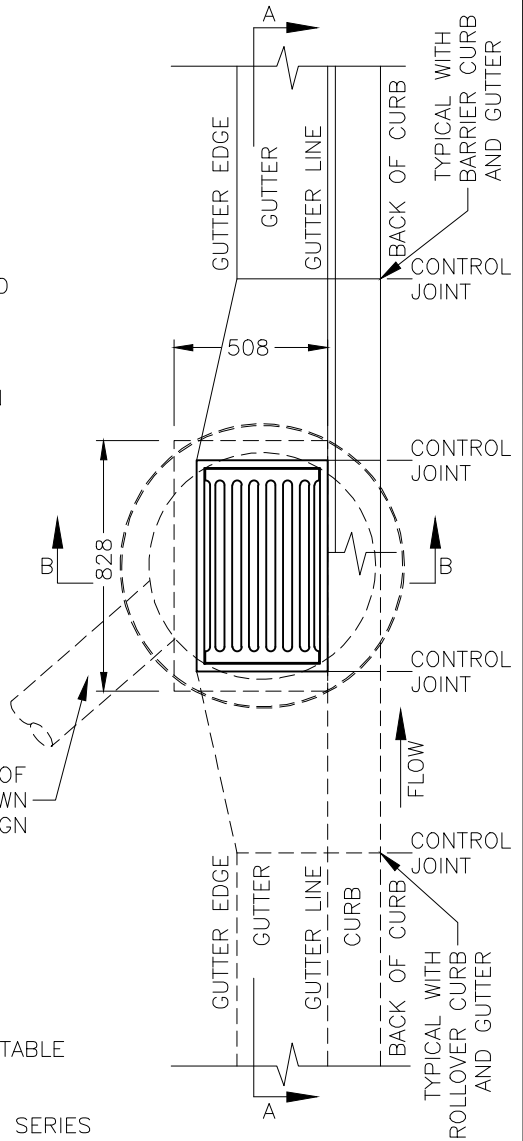
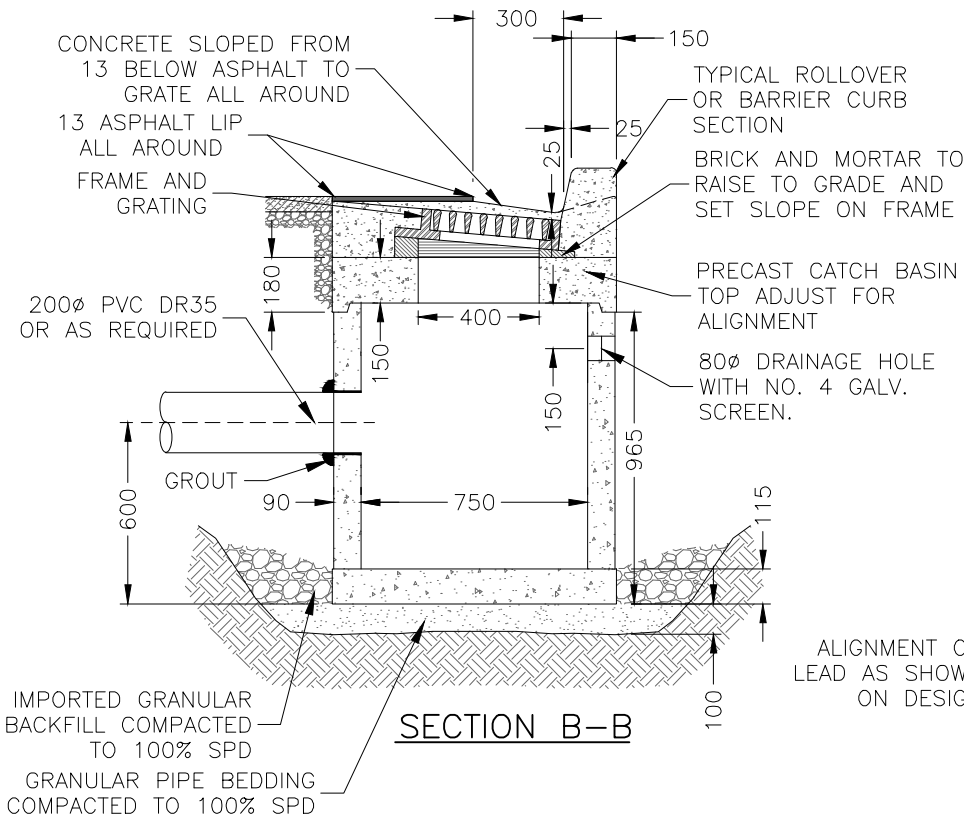
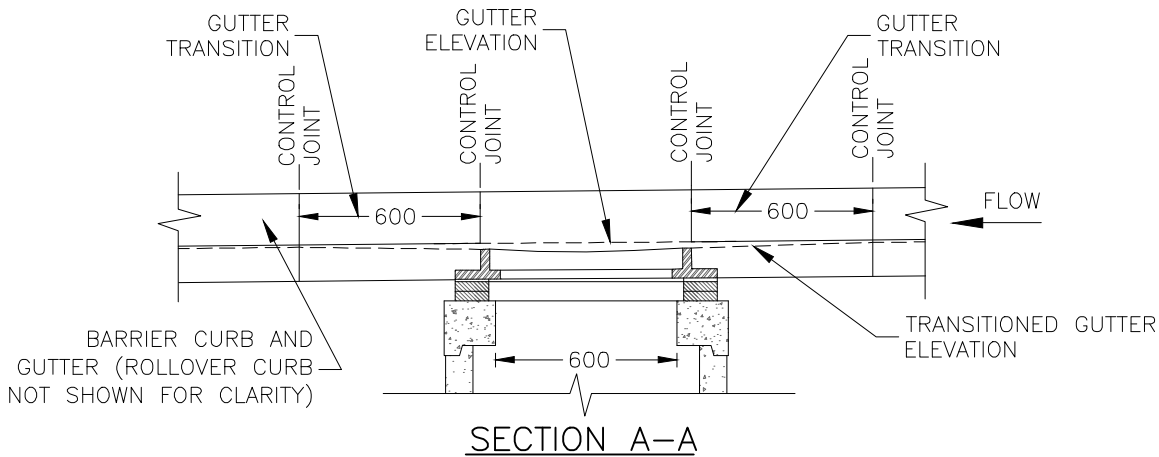


\\usi.urban-systems.com\projects\Projects_VAN\1190\0186\01\Design\CAD\20_PROD\SET 1\ACAD-DET - 1190018601 Utility Details.dwg, SS11A, 2020/07/10 03:41 pm rthomson



- NOTES:**
1. PRECAST UNITS c/w BASE, APPROVED BY APPROVING OFFICER, ARE ACCEPTABLE
 2. CATCH BASIN LEADS TO EXTEND NO MORE THAN 20mm INTO BARREL
 3. 200Ø PVC DR35 OR AS REQUIRED FOR SINGLE CATCH BASIN LEAD
 4. 250Ø PVC DR35 OR AS REQUIRED FOR TWO CATCH BASINS CONNECTED IN SERIES

GUTTER TRANSITION

	SCALE: NOT TO SCALE	TITLE: TOP INLET CATCH BASIN	
	DATE DRAWN: 2020-07-10	SECTION:	REVISION No.
	APPROVED BY:		DWG.No. SS11A