
City of Quesnel

SCHEDULE A – LEVEL OF SERVICE

SCHEDULE A – LEVEL OF SERVICE

1.0	Works and Services Requirements	1
1.1	Establishment of Service Levels	1
1.2	City of Quesnel Standards	1
1.3	Accessibility.....	2

LIST OF TABLES

Table A1 - Level of Service	1
-----------------------------------	---

LIST OF DRAWINGS

Maps

Map 1.0 - Drainage Levels of Service.....	4
Map 2.0 - Wastewater Sanitary Sewer Levels of Service.....	5

Road Cross-Sections

Cross-Sections A- 1 - Arterial Road Typical Section	7
Cross-Sections A- 2 - Commercial Collector Typical Section.....	8
Cross-Sections A- 3 - Residential Collector Typical Section	9
Cross-Sections A- 4 - Local Road Typical Section	10
Cross-Sections A- 5 - Rural Collector Road Typical Section.....	11
Cross-Sections A- 6 - Rural Residential Road Typical Section	12
Cross-Sections A- 7 - Downtown Commercial Road Typical Section	13

1.0 WORKS AND SERVICES REQUIREMENTS

1.1 Establishment of Service Levels

The minimum level of service to be constructed by an *Owner* prior to approval of *Subdivision* or *Development* is set out in **Table A1**. While **Table A1** sets out the minimum level of service required, the *Approving Officer* retains the right to require a higher level of service or standard due to the conditions affecting a specific *Subdivision*.

Table A1 - Level of Service

	Level of Service			
	<u>All of City</u>	<u>Area A (West Quesnel Land Stability Area)</u>	<u>Area A (Two/Three Mile Flat and CPP/Landfill)</u>	<u>Area B (South Quesnel)</u>
	Except for areas identified in Map 1.0 and Map 2.0	Reference Map 1.0 (Drainage Levels of Service Map)	Reference Map 2.0 (Wastewater Levels of Service Map)	
Sewer	Public Sewer System	Public Sewer System	Public Sewer System or On-site Sewer ¹	Public Sewer System or Ground Disposal Systems ²
Drainage	Public Drainage System ⁴	Public Drainage System with No Ground Infiltration Systems ³	Public Drainage System ⁴	Public Drainage System ⁴
Water	Public Water System			
Roads	See Table 5.1 Road Cross-Section Elements in Schedule B ⁵			
Wiring and Lighting	See Table 5.1 Road Cross-Section Elements in Schedule B ⁵			

¹ On-site sewer system to meet all regulations. No lagoons except for in cases where industrial operations require it.

² On-site sewer system to meet all regulations. No lagoons.

³ Stormwater in this area to connect to existing piped City stormwater system. Onsite infiltration is not allowed due to land stability issues.

⁴ Piped drainage systems shall be provided if required by established drainage plans or if the surrounding neighbourhood has an existing piped system. Open ditches will be permitted in all other areas upon approval of the Director of Capital Works and Infrastructure.

⁵ The appropriate road cross section will be determined by the Director of Capital Works and Infrastructure in alignment with the Official Community Plan.

1.2 City of Quesnel Standards

Table A1 has been divided into the following sections:

- All of City; this refers to standards that are required for all areas of the City of Quesnel with the exceptions of the areas noted in Map 1 and Map 2
- Area A (West Quesnel Land Stability Area) – this refers to areas within the West Quesnel Land Stability Area. Refer to Map 1
- Area A (Two/Three Mile Flat and CPP/Landfill) – this refers to areas within the Two and Three Mile Flats Area, and Cariboo Pulp and Paper and the Landfill. Refer to Map 2
- Area B (South Quesnel) – this refers to the area within South Quesnel. Refer to Map 2

The Owner is required to provide services noted in the **Table A1** and in accordance to Schedule B of this bylaw as noted below:

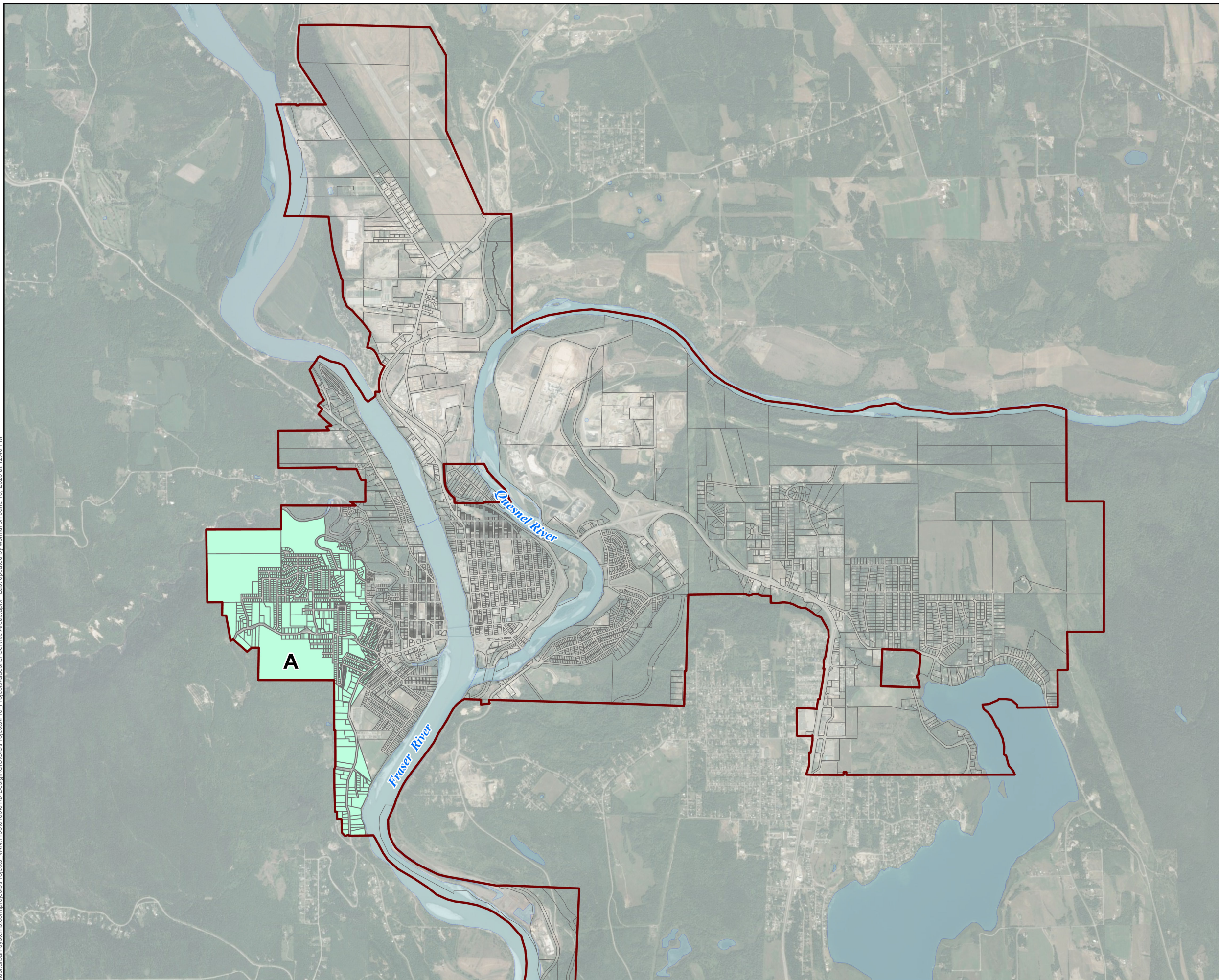
- Road width shall be designated based on specific cross-sections located in Schedule B – Design and Construction Manual, and as identified in Section 5 – Roads
- Road Cross-sections are shown on Figures A1 through A7
- Curbing shall be concrete to MMCD Barrier or Rollover standards or as shown on road cross sections in Schedule A - Works and Services and where identified in Section 5 – Roads
- Sidewalk width, location and materials shall be as indicated on specific road cross sections in Schedule A - Works and Services and as identified in the Design and Construction Manual, Section 5 – Roads
- Street trees shall be planted in accordance with Section 12 - Landscape

1.3 Accessibility

The *Owner's Professional Engineer* shall consider the accessibility of people with disabilities when designing all roads, sidewalks, pathways, curb let downs and driveway crossings.

MAPS

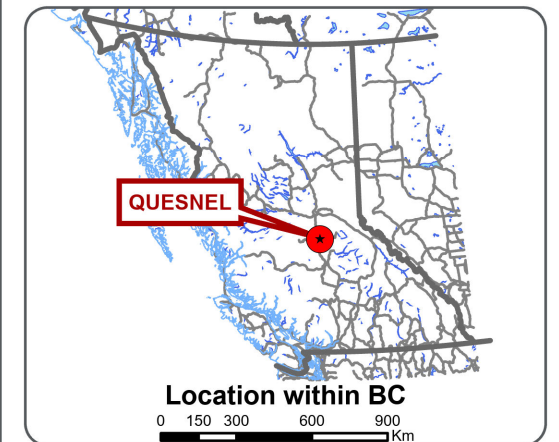
\\us1.urban-systems.com\projects\Projects_VAN1190018601\1D-Design\GIS\GIS\Projects\Pro - Projects\Quesnel Service Areas.aprx Last updated by wsmith on June 10, 2020 at 12:40 PM



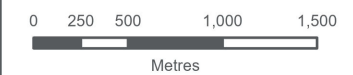
Drainage Levels
of Service

Legend

- A - West Quesnel Land Stability Area



The accuracy & completeness of information shown on this drawing is not guaranteed. It will be the responsibility of the user of the information shown on this drawing to locate & establish the precise location of all existing information whether shown or not.

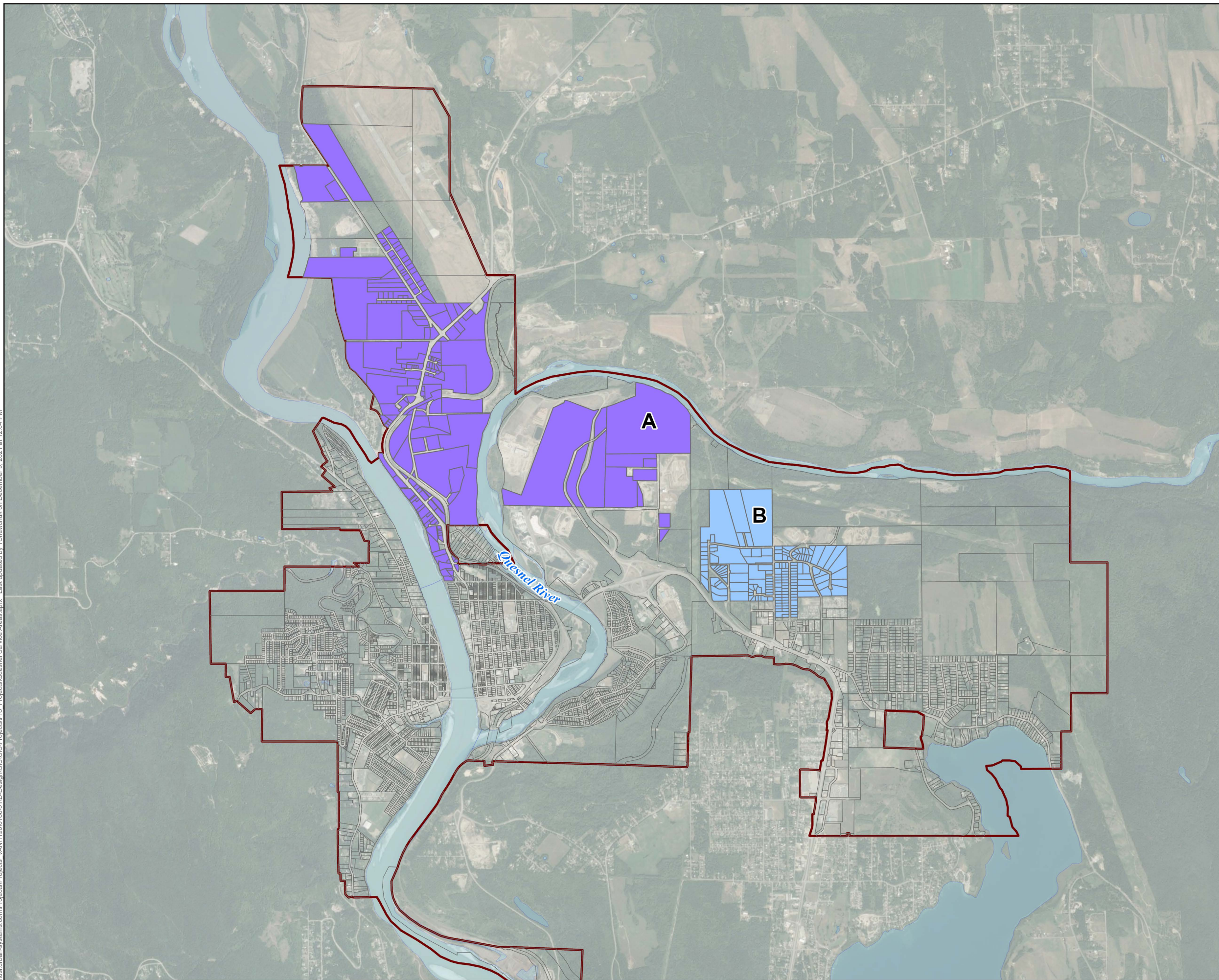


Coordinate System: NAD 1983 UTM Zone 10N Scale: 1:40,000

- Data Sources:
- Municipal boundary and infrastructure provided by City of Quesnel.
 - Roads provided by GeoGratis website.
 - Imagery provided by Bing.

Project #: 1190.0186.01
Author: WS
Checked:
Status:
Revision: A
Date: 2020 / 6 / 10

\\us1.urban-systems.com\Projects\Projects_VAN115001860\1D-Design\GIS\GIS\Projects\Pro_Projects\Quesnel Service Areas.atrx Last updated by TShevchuk on December 9, 2021 at 12:04 PM



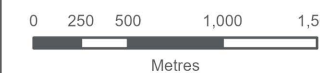
**Wastewater Levels
of Service**

Legend

- A - Two/Three Mile Flat and CPP/Landfill
- B - South Quesnel



The accuracy & completeness of information shown on this drawing is not guaranteed. It will be the responsibility of the user of the information shown on this drawing to locate & establish the precise location of all existing information whether shown or not.



Coordinate System: **NAD 83 / UTM Zone 10N** Scale: **1:40,000**

- Data Sources:**
- Municipal boundary and infrastructure provided by City of Quesnel.
 - Roads provided by GeoGratis website.
 - Imagery provided by Bing.

Project #: 1190.0155.08
 Author: WS
 Checked:
 Status:
 Revision: B
 Date: 2021 / 12 / 9

ROAD CROSS-SECTIONS



SCALE:
NOT TO SCALE

DATE DRAWN:
DECEMBER 2020

APPROVED BY: _ _

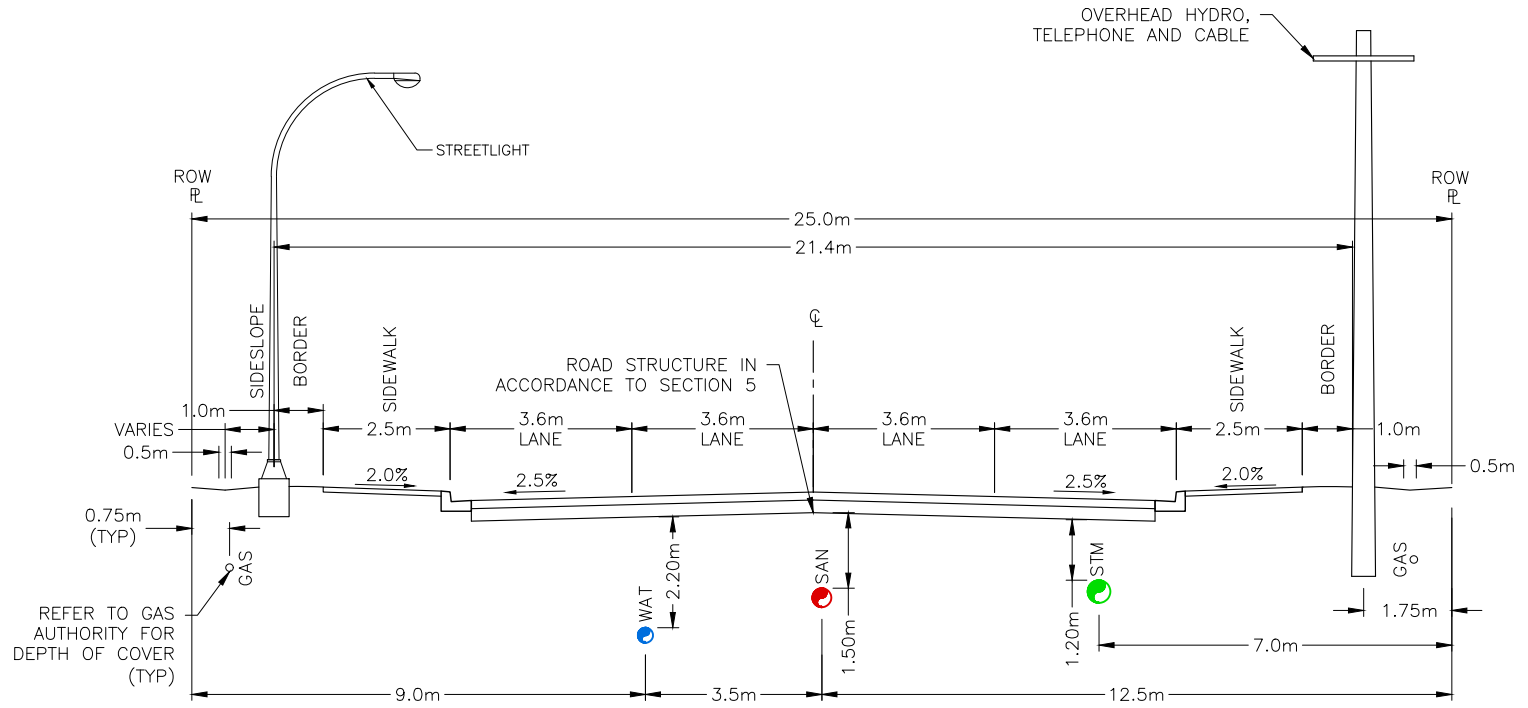
TITLE:

ARTERIAL ROAD
TYPICAL SECTION

SECTION:

REVISION No.

DWG.No.
A1





SCALE:
NOT TO SCALE

DATE DRAWN:
2020-06

APPROVED BY:

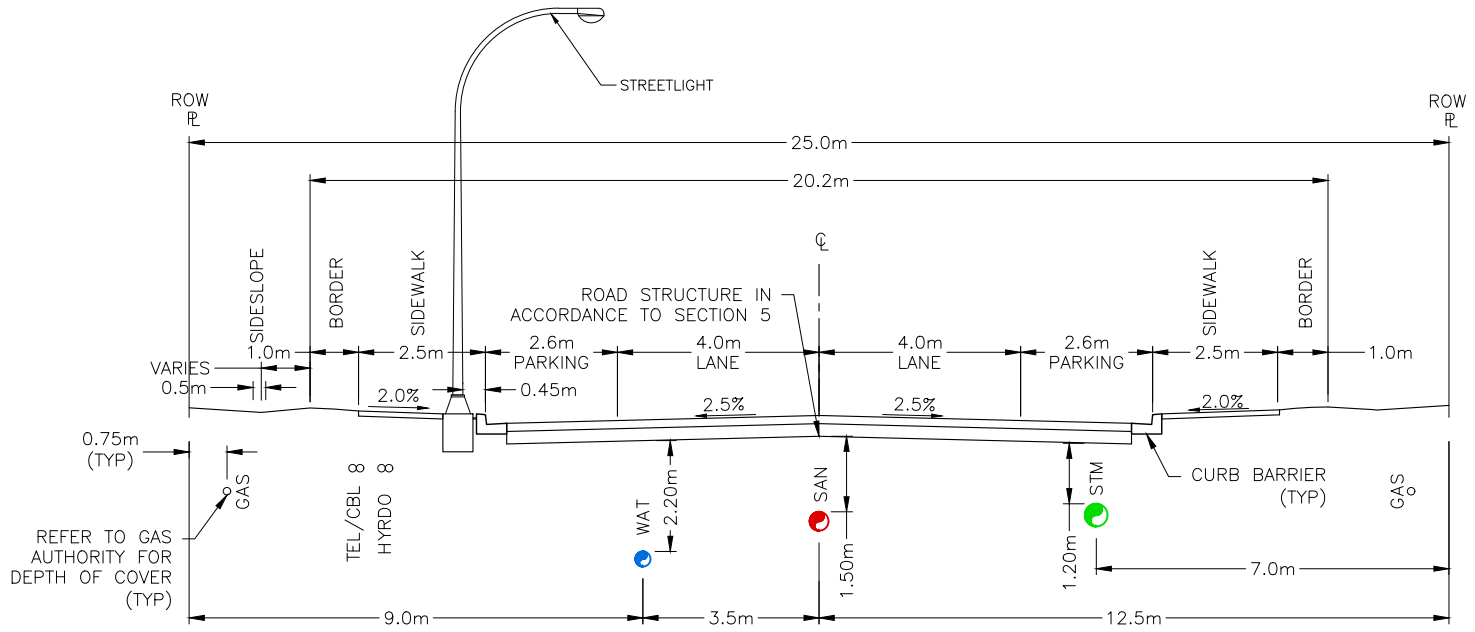
TITLE:

COMMERCIAL COLLECTOR
TYPICAL SECTION

SECTION:

REVISION No.

DWG.No.
A2





SCALE:
NOT TO SCALE

DATE DRAWN:
2020-06

APPROVED BY:

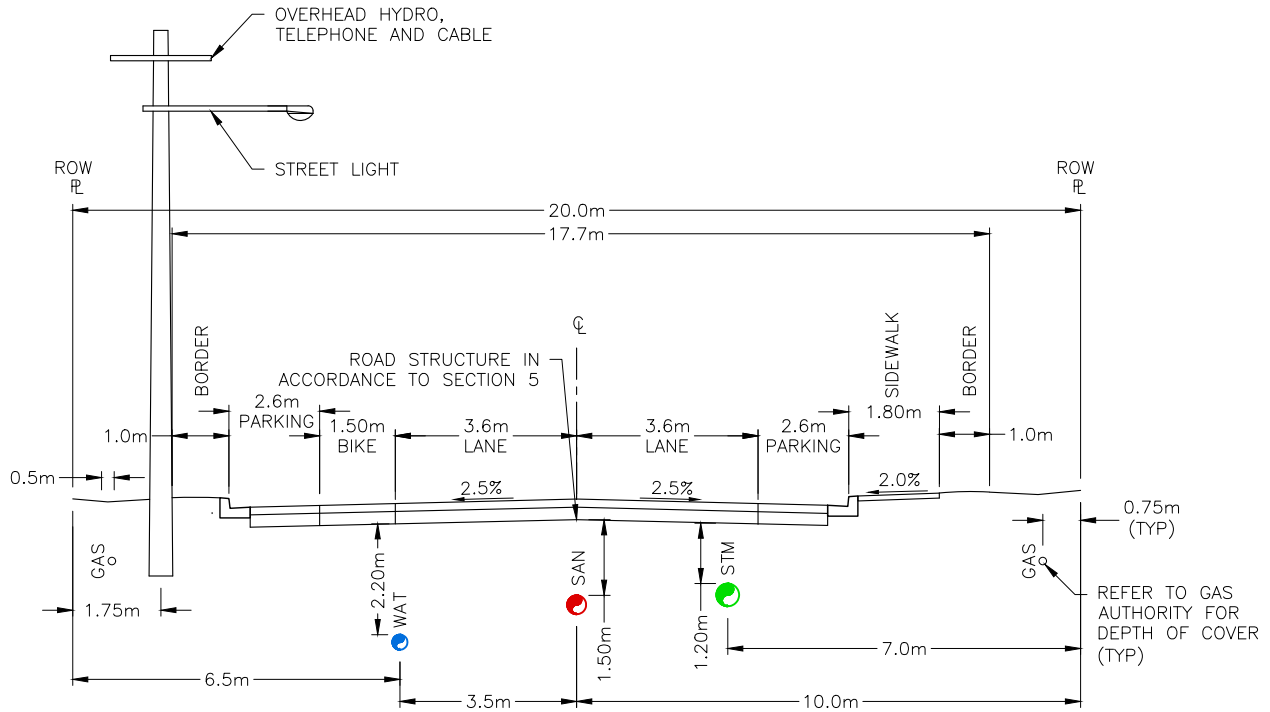
TITLE:

RESIDENTIAL COLLECTOR
TYPICAL SECTION

SECTION:

REVISION No.

DWG.No.
A3



REFER TO GAS AUTHORITY FOR DEPTH OF COVER (TYP)



SCALE:
NOT TO SCALE

DATE DRAWN:
2020-06

APPROVED BY:

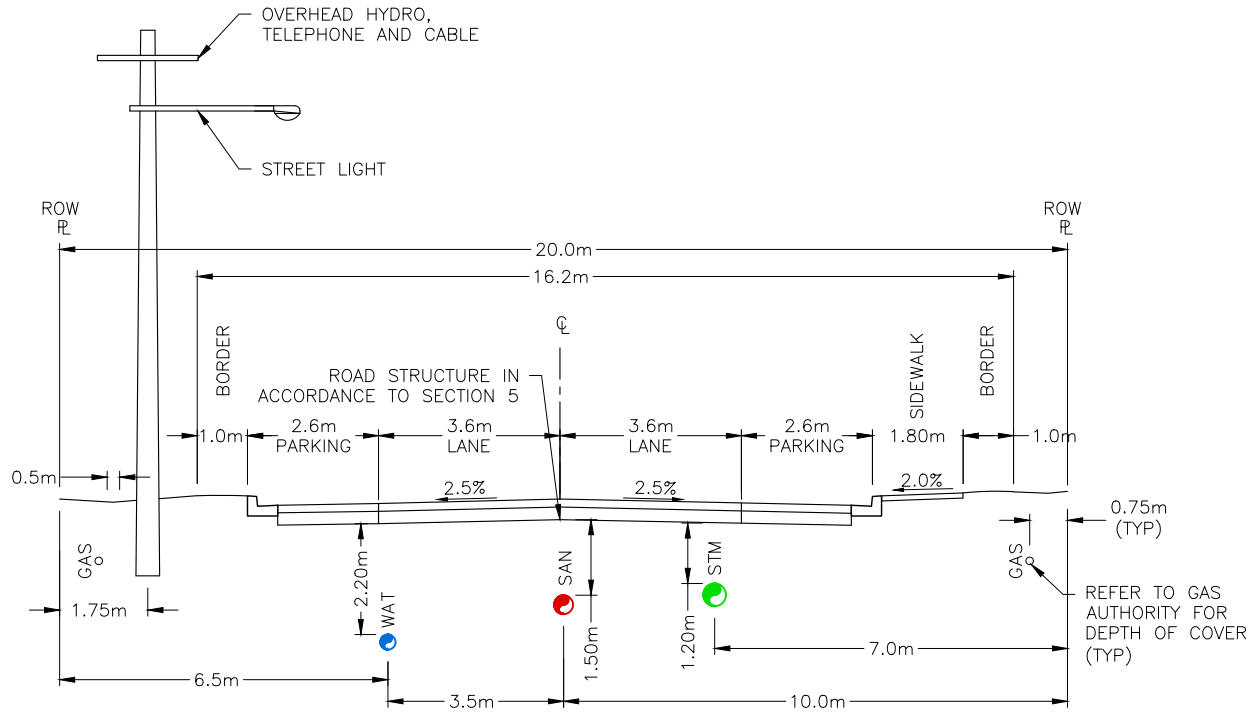
TITLE:

LOCAL ROAD
TYPICAL SECTION

SECTION:

REVISION No.

DWG.No.
A4





SCALE:
NOT TO SCALE

DATE DRAWN:
OCTOBER 2019

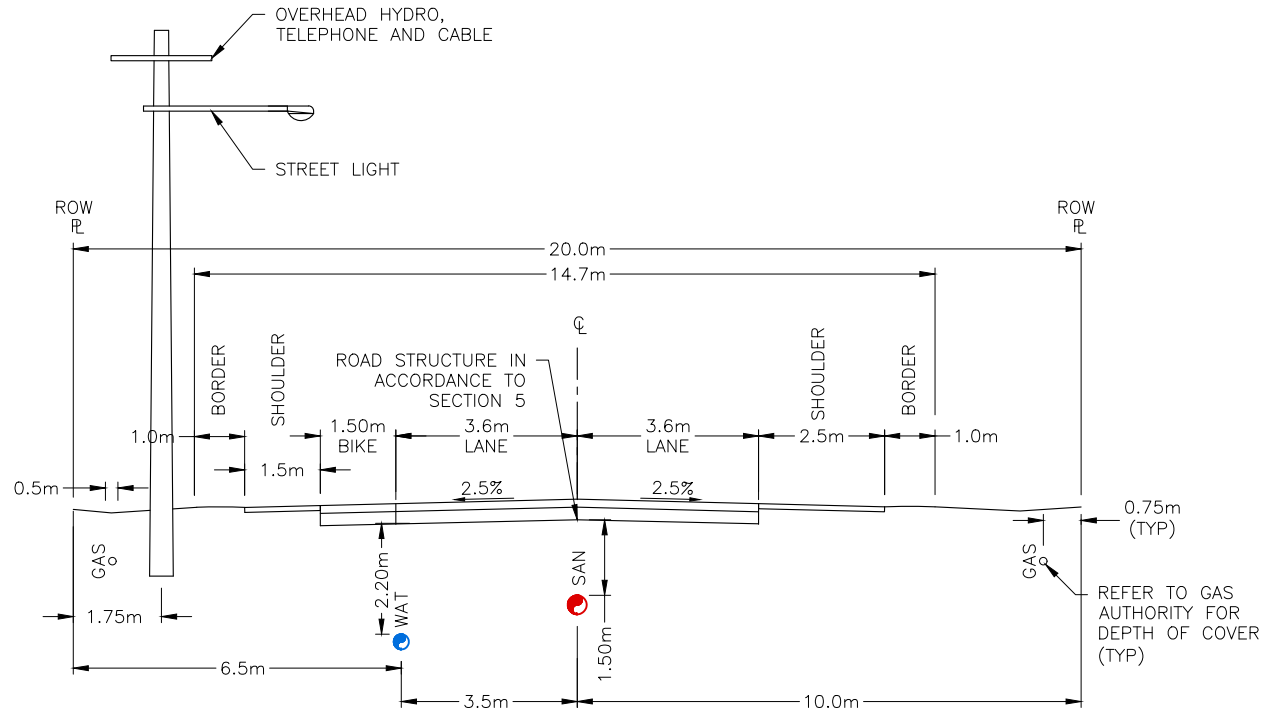
APPROVED BY: _ _ _

TITLE:
RURAL COLLECTOR/INDUSTRIAL
TYPICAL SECTION

SECTION:

REVISION No.

DWG.No.
A5





SCALE:
NOT TO SCALE

DATE DRAWN:
2020-06

APPROVED BY:

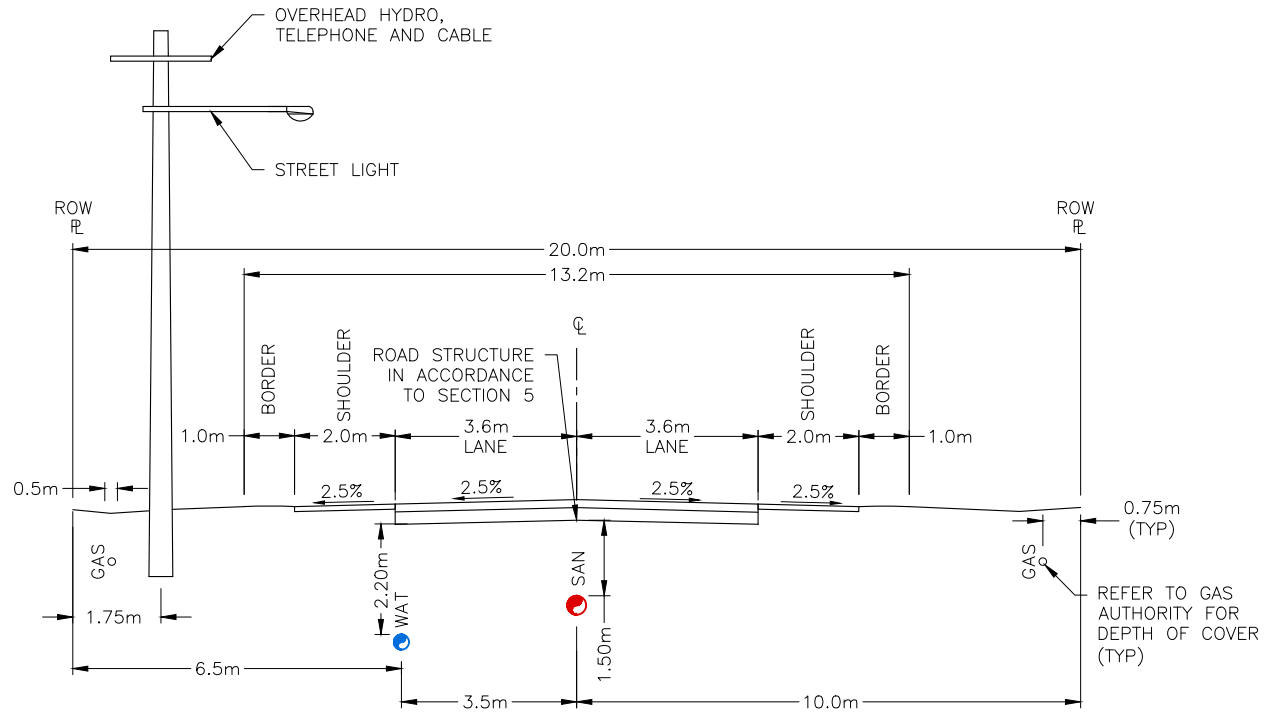
TITLE:

RURAL RESIDENTIAL ROAD
TYPICAL SECTION

SECTION:

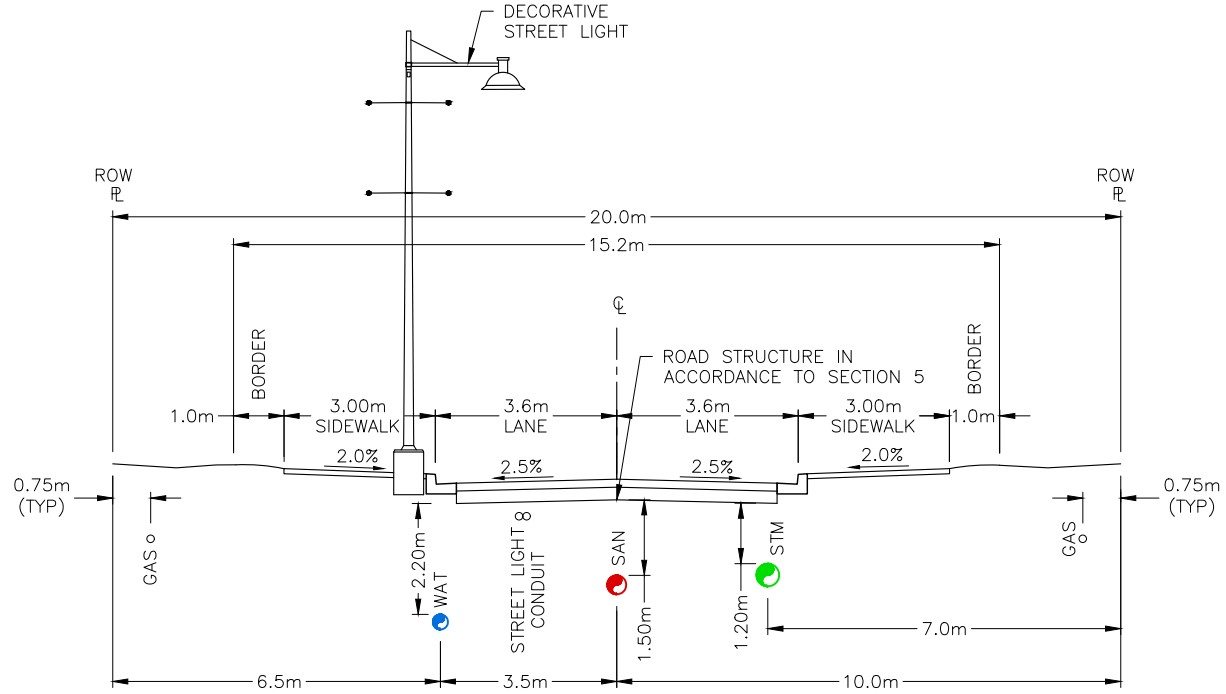
REVISION No.

DWG.No.
A6





NOTE: OVERHEAD HYDRO, TELEPHONE AND CABLE LOCATED IN ALLEY.



SCALE:
NOT TO SCALE

DATE DRAWN:
2020-06

APPROVED BY:

TITLE:
DOWNTOWN COMMERCIAL ROAD
TYPICAL SECTION

SECTION:

REVISION No.

DWG.No.
A7