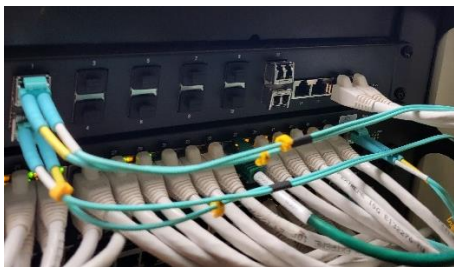
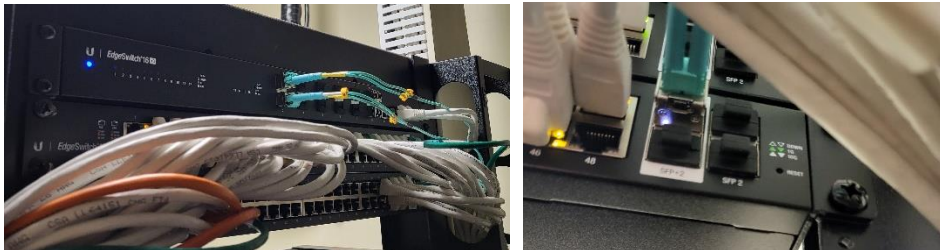


## Proponent Questions

### Switch models and port availability

We have a 2 post rack that holds 1 Ubiquiti EdgeSwitch 16 XG and 2 48 port Ubiquiti EdgeSwitch 48. Both of these switches are linked to the ES16 via 10Gb fibre SFP+ links.



About 10 feet away we have a 4 post rack/shelf that holds 1 Ubiquiti EdgeSwitch 48. This switch is linked via a 10Gb copper SFP+ link.



Each Ubiquiti EdgeSwitch 48 switch has 1 available SFP+ port to work with and the Ubiquiti EdgeSwitch 16 XG has a remaining 10 SFP+ ports and 2 copper 10Gb ports available.

### Power Cords

We currently use APC SmartUPS 1500 UPS on all our rack equipment. 10 Foot NEMA 5-15P/C13 power cords would be sufficient for this project.

