



# **Timber Supply Challenges and Opportunities Quesnel**



Albert Nussbaum R.P.F  
Director, Forest Analysis and Inventory Branch  
Office of the Chief Forester, May 2018



## **Presentation Outline**

- **Fibre Supply Challenges**
  - Mountain Pine Beetle
  - Spruce Beetle
  - Fire
  - Disease
  - Resulting Timber Supply Forecasts
    - Distance
    - Slope
- **Fibre Supply Opportunities**
  - Waste
  - Utilizing More of the Forest
- **Conclusions**



## **Mountain Pine Beetle**





## **Spruce beetle**



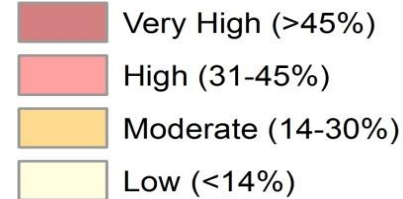


## **Wildfire**

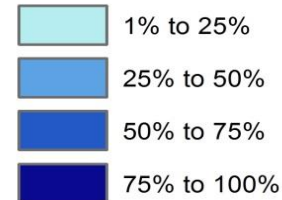




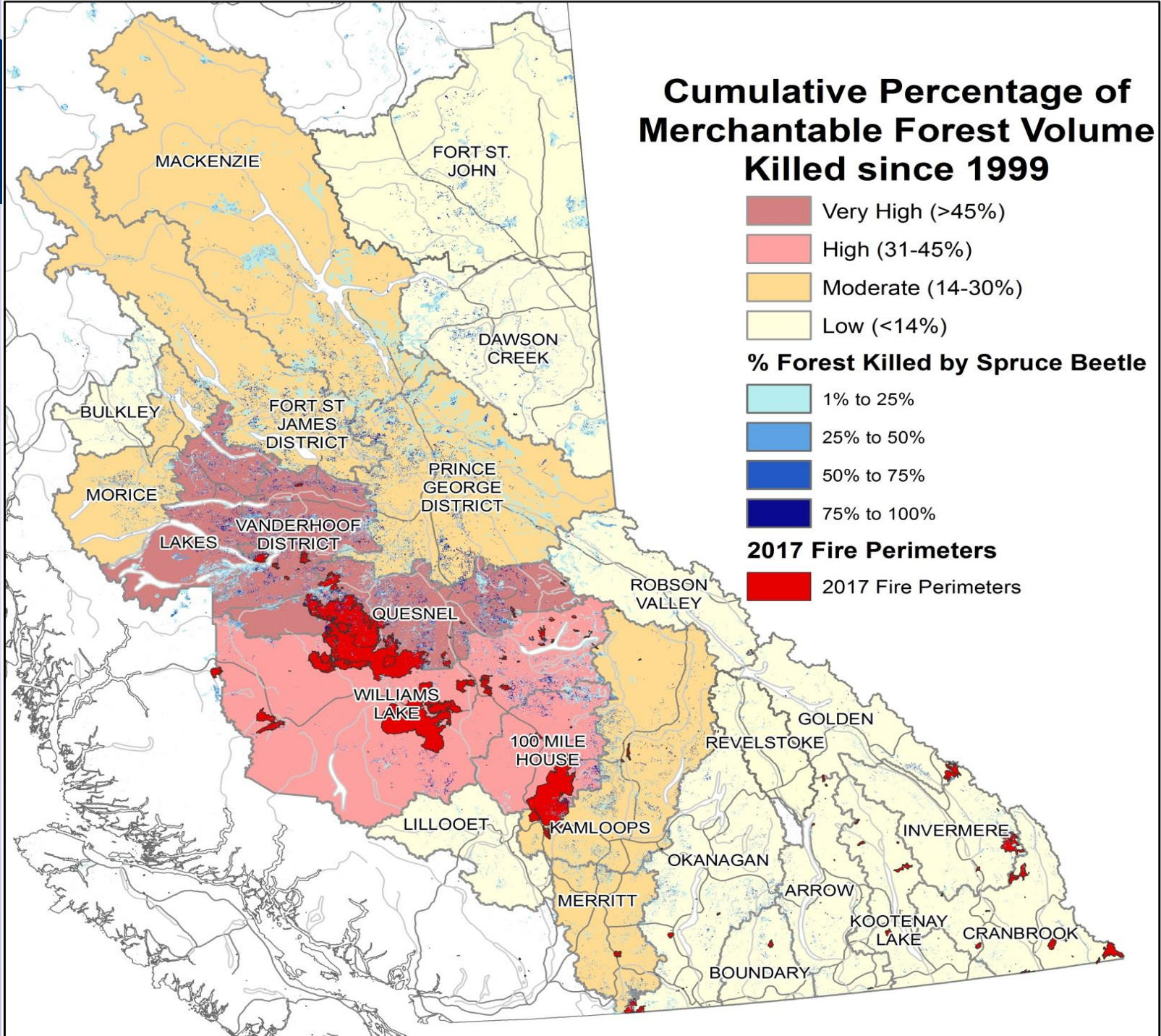
# Cumulative Percentage of Merchantable Forest Volume Killed since 1999



## % Forest Killed by Spruce Beetle



## 2017 Fire Perimeters

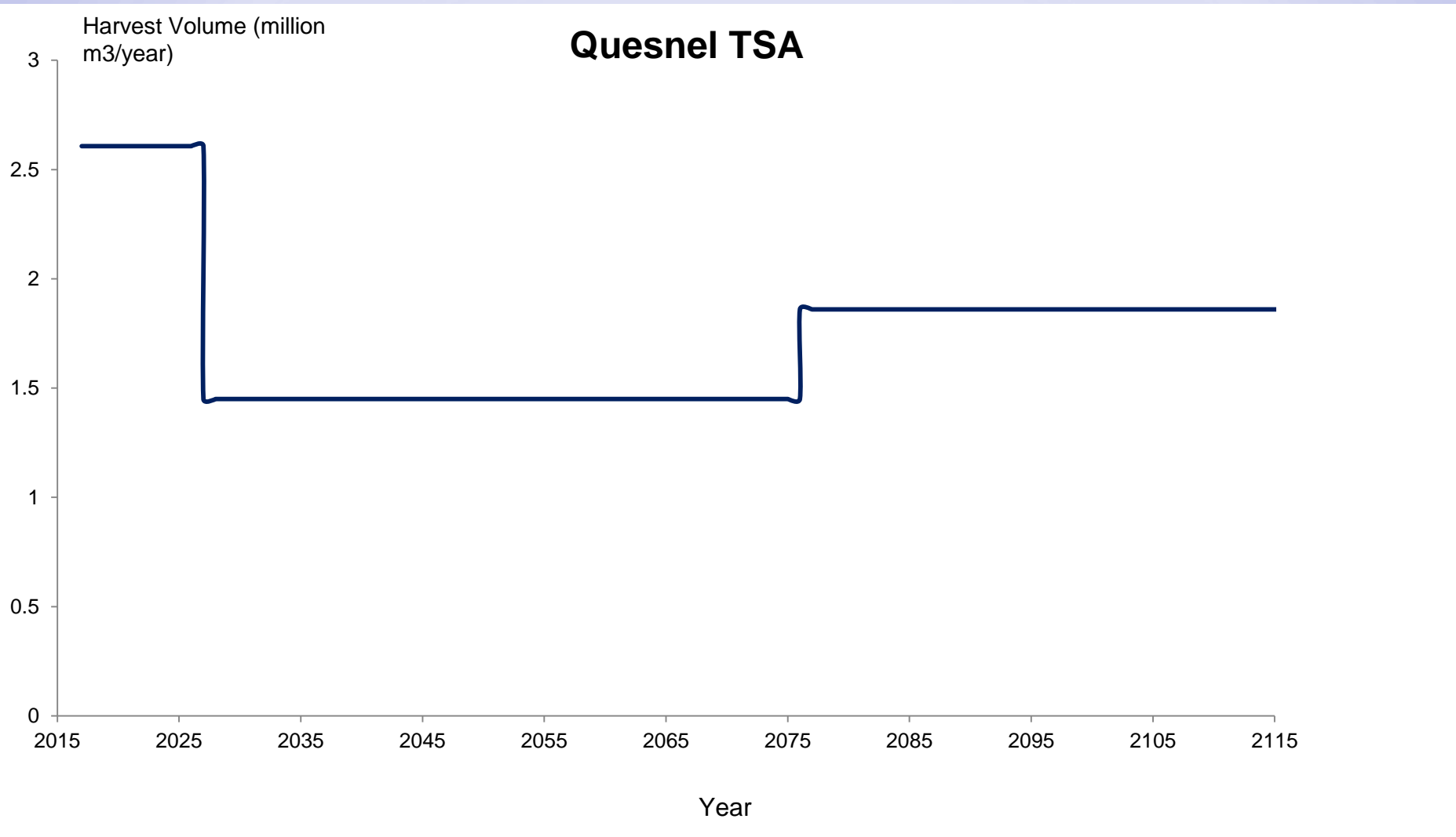




## Disease



# Ministry of Forests, Lands and Natural Resource Operations

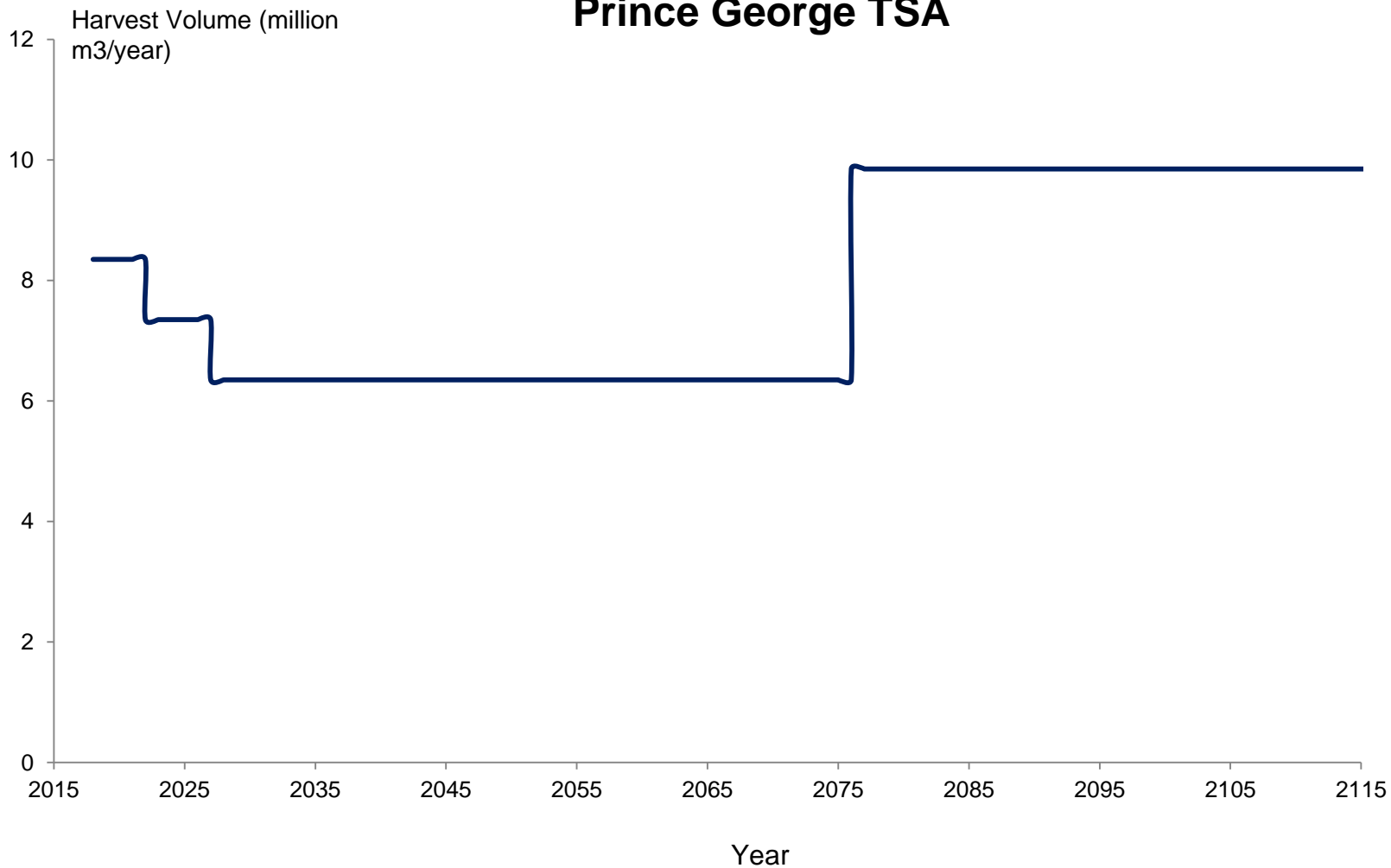




# Ministry of Forests, Lands and Natural Resource Operations



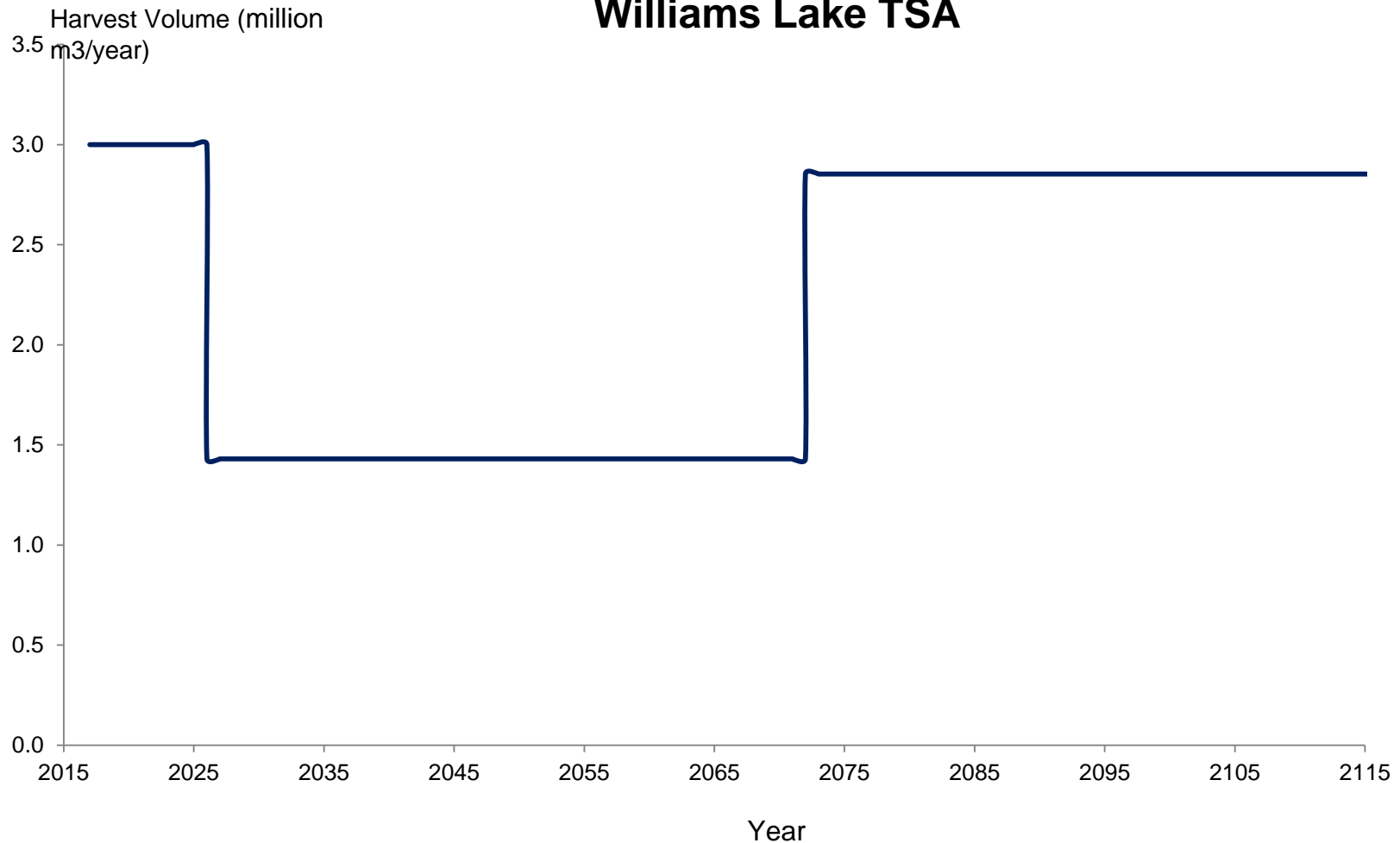
## Prince George TSA



# Ministry of Forests, Lands and Natural Resource Operations



## Williams Lake TSA

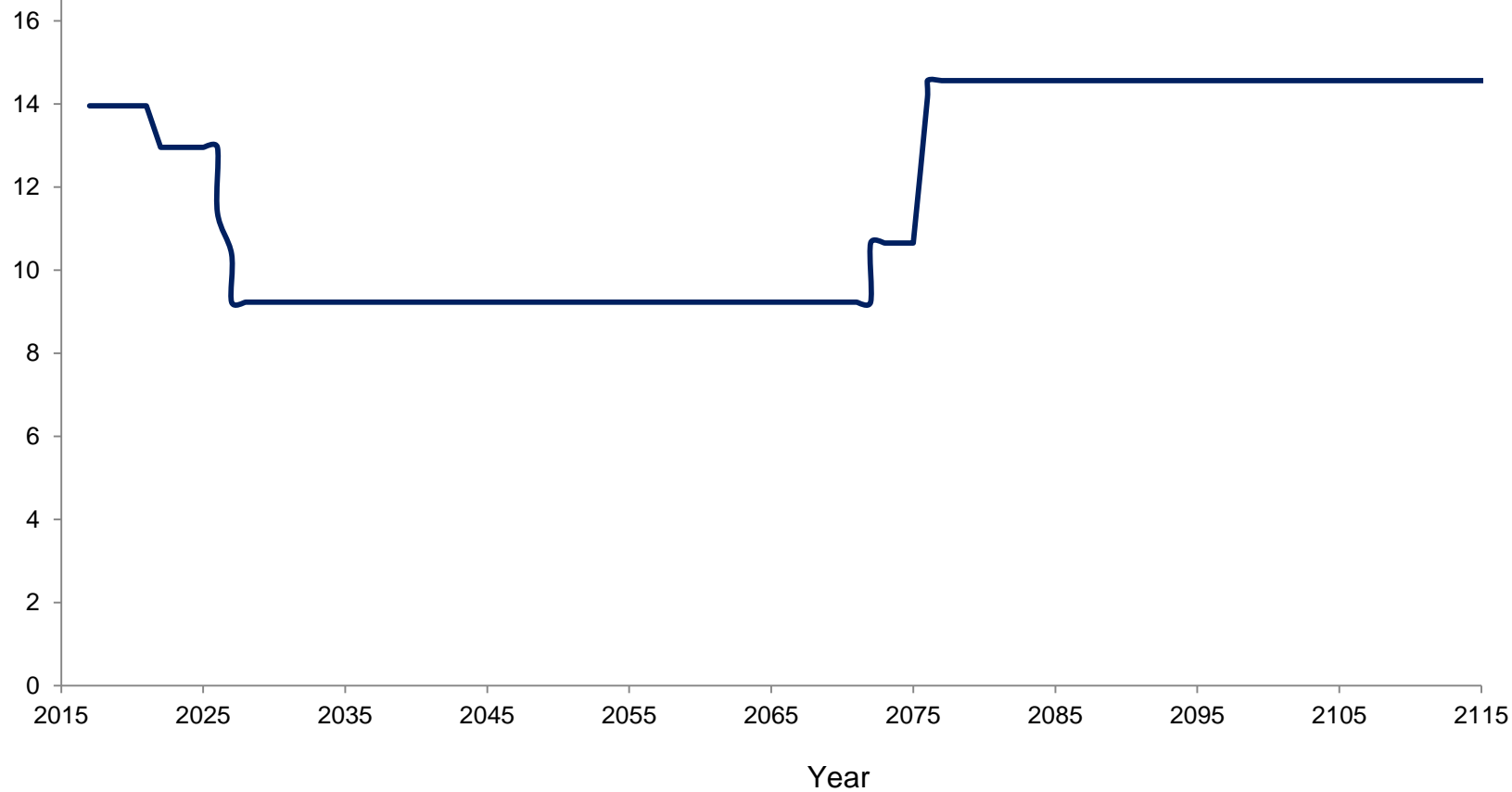


# Ministry of Forests, Lands and Natural Resource Operations



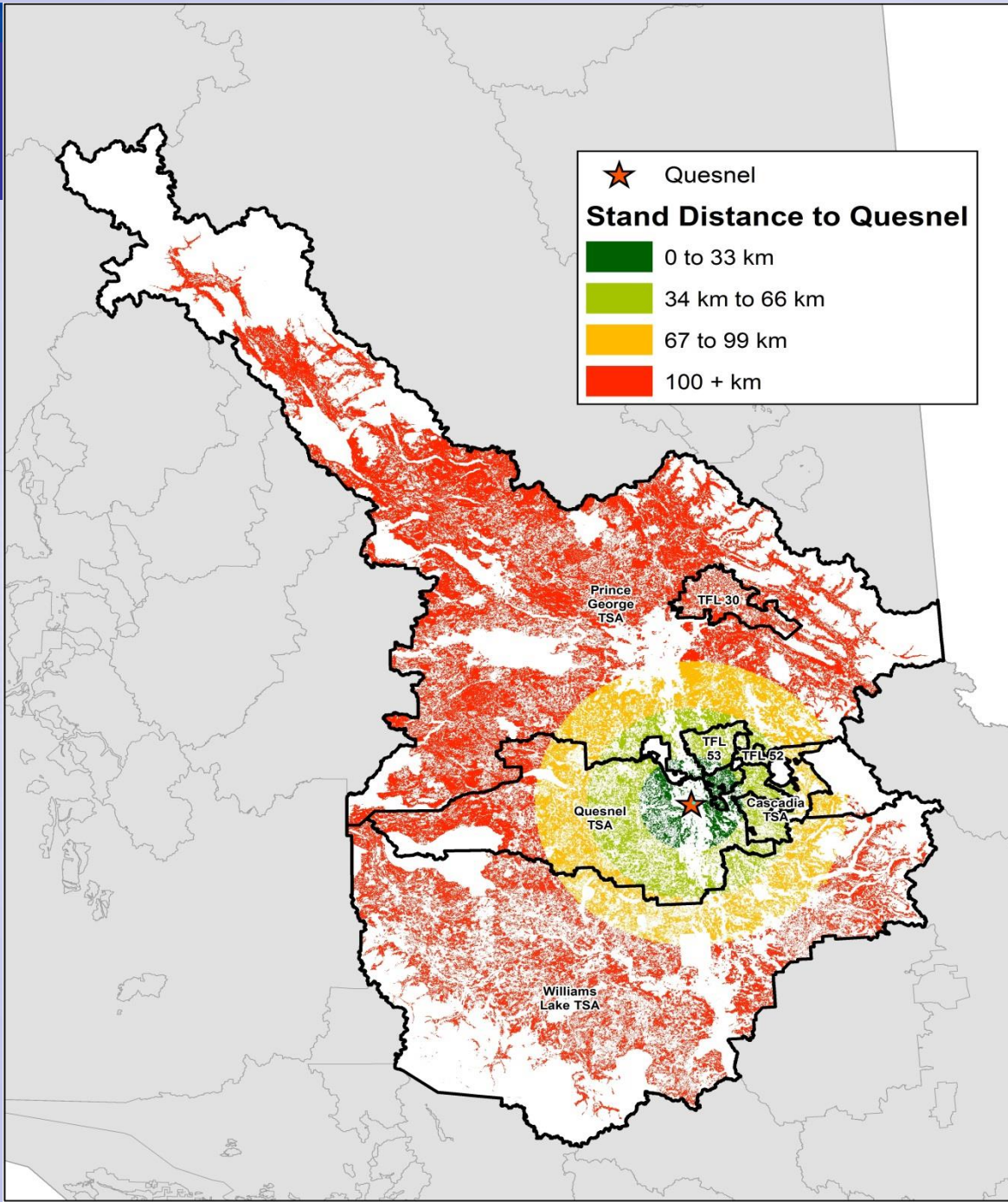
Harvest Volume (million  
m<sup>3</sup>/year)

## Williams Lake TSA, Quesnel and Prince George TSAs Combined





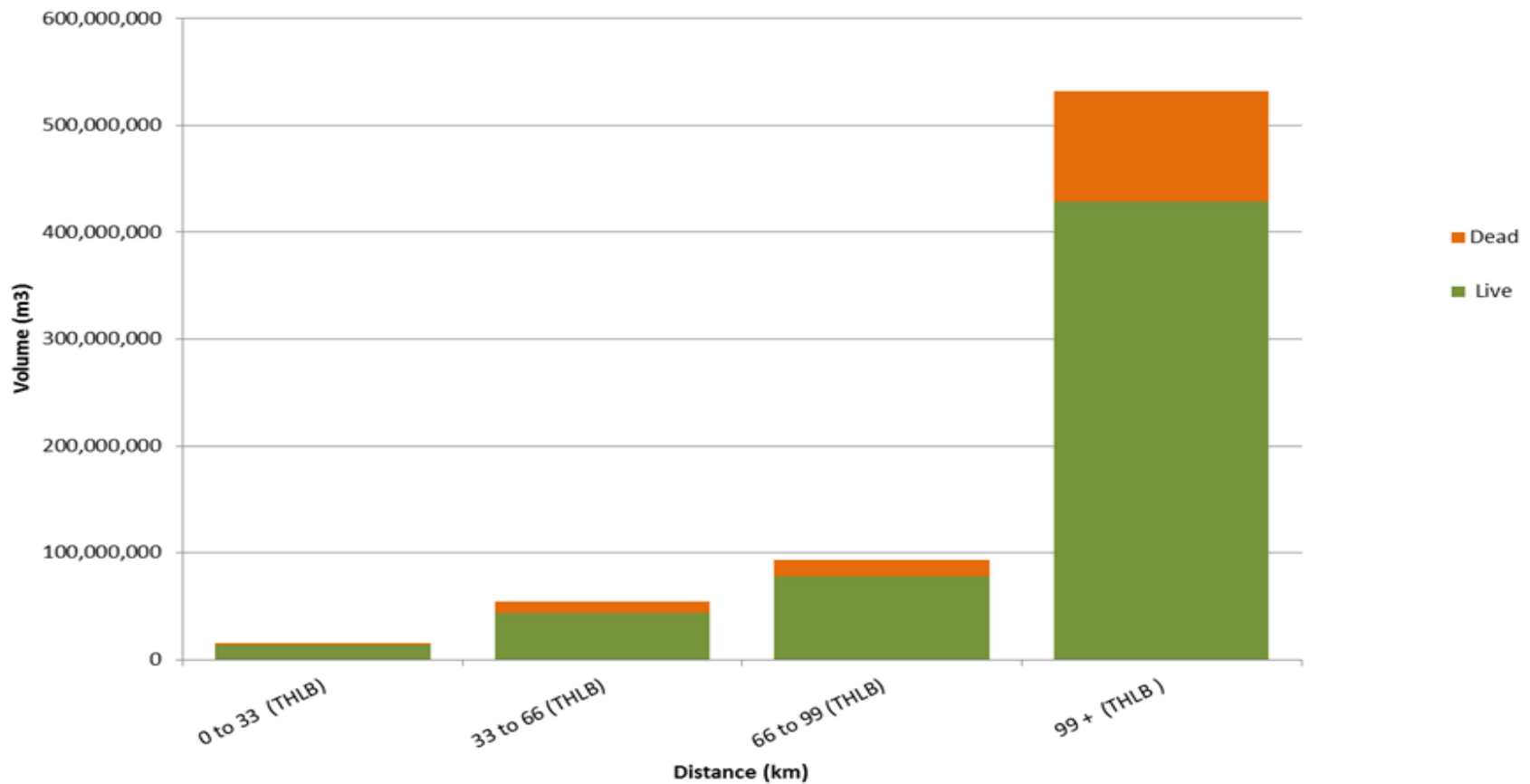
# Distance to Fibre



# Ministry of Forests, Lands and Natural Resource Operations

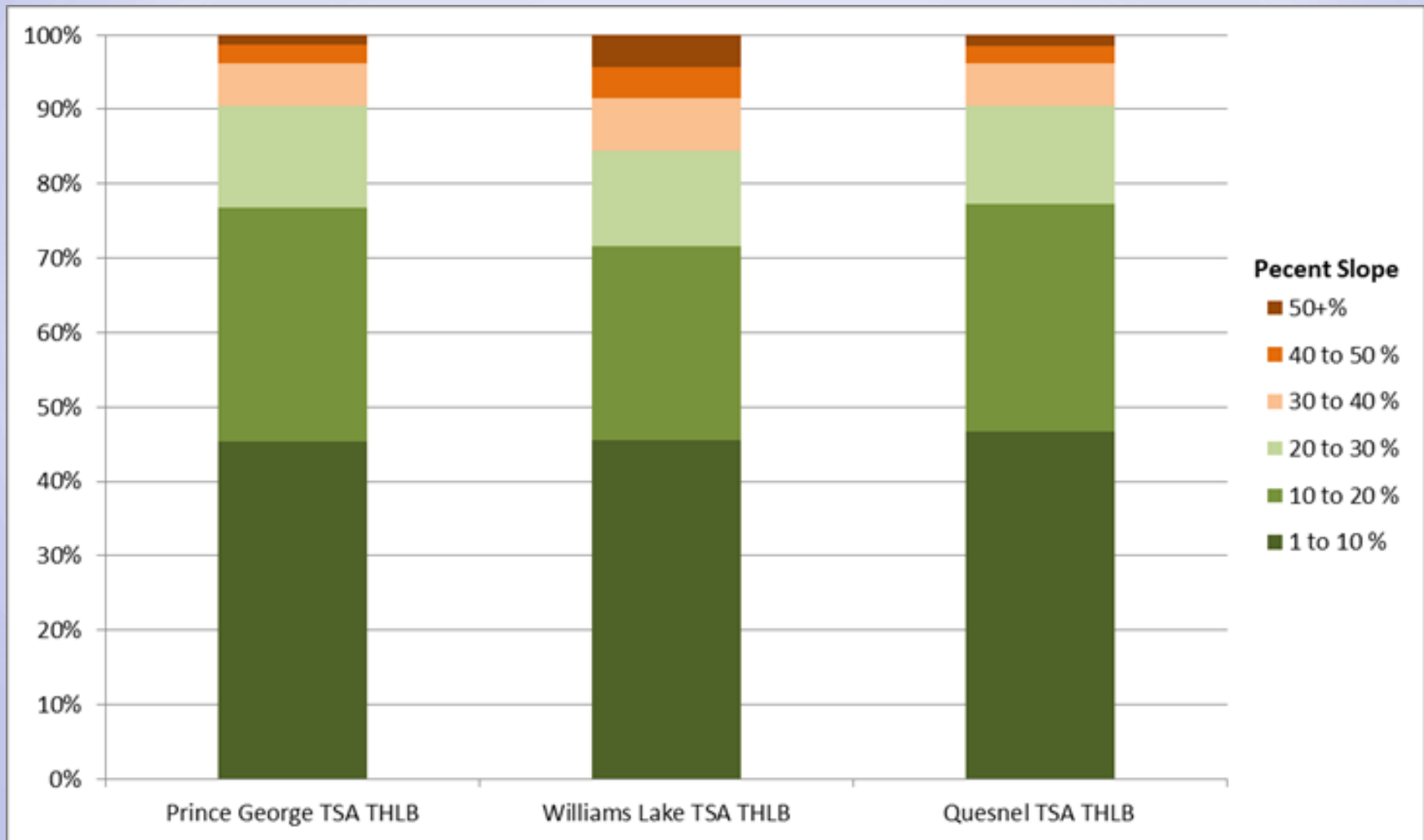


**Distance of timber from Prince George TSA, Williams Lake TSA, and Quesnel TSA  
to the City of Quesnel**





## Slope



# Ministry of Forests, Lands and Natural Resource Operations



## Slope





## **Opportunities - Waste**





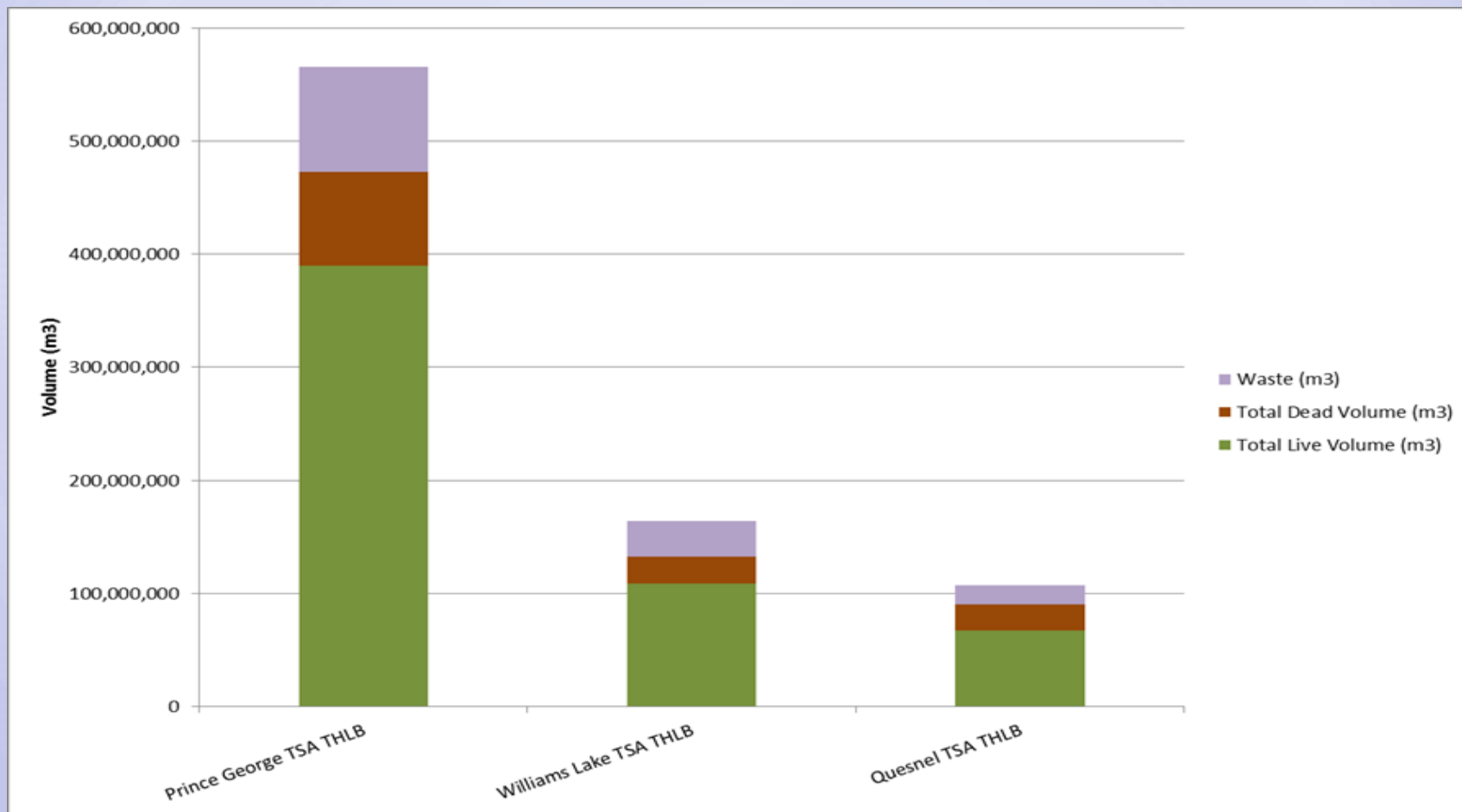


## **Opportunities – Other Waste**



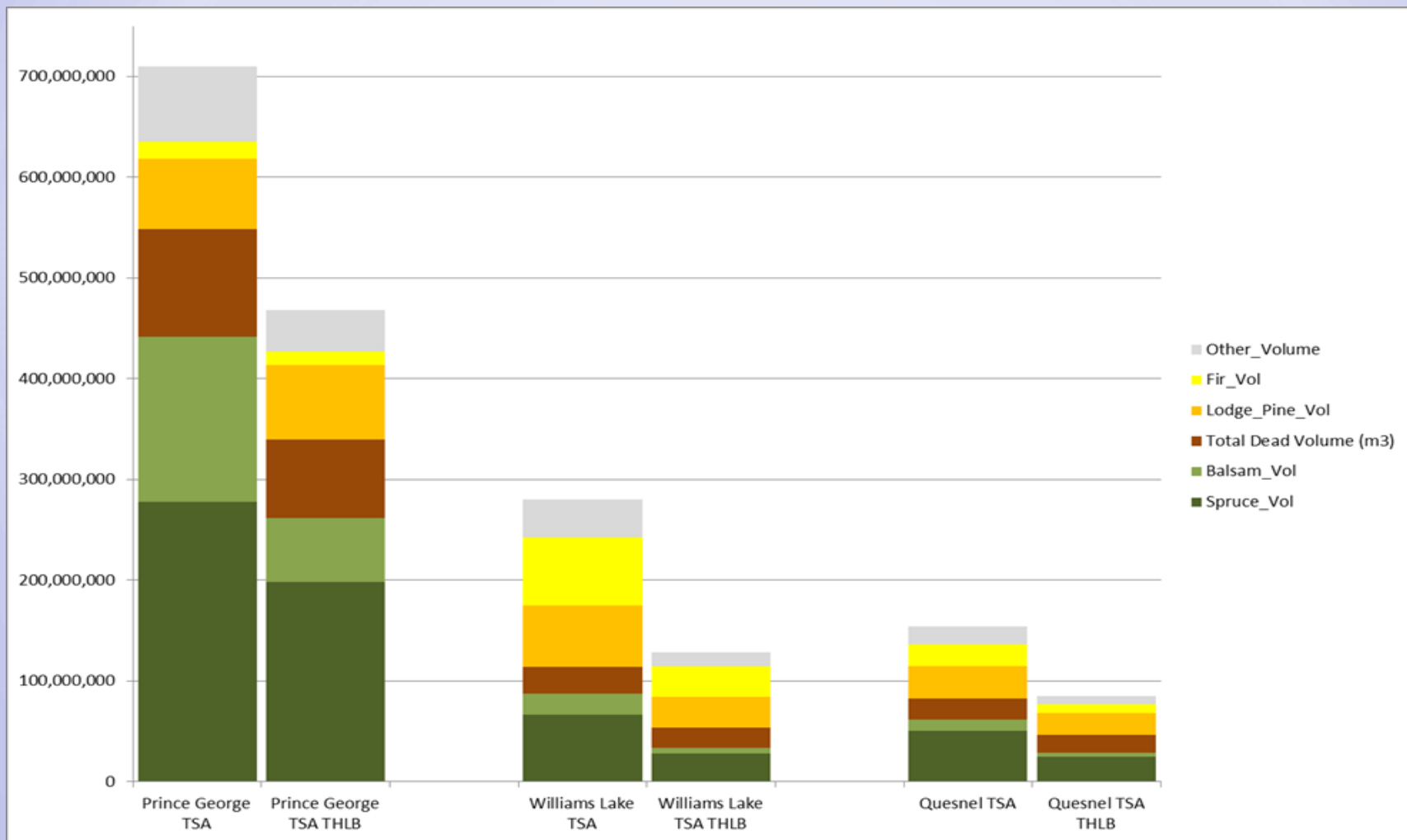


## Opportunities – Other Waste Biomass





## Opportunities - Utilizing more of the forest

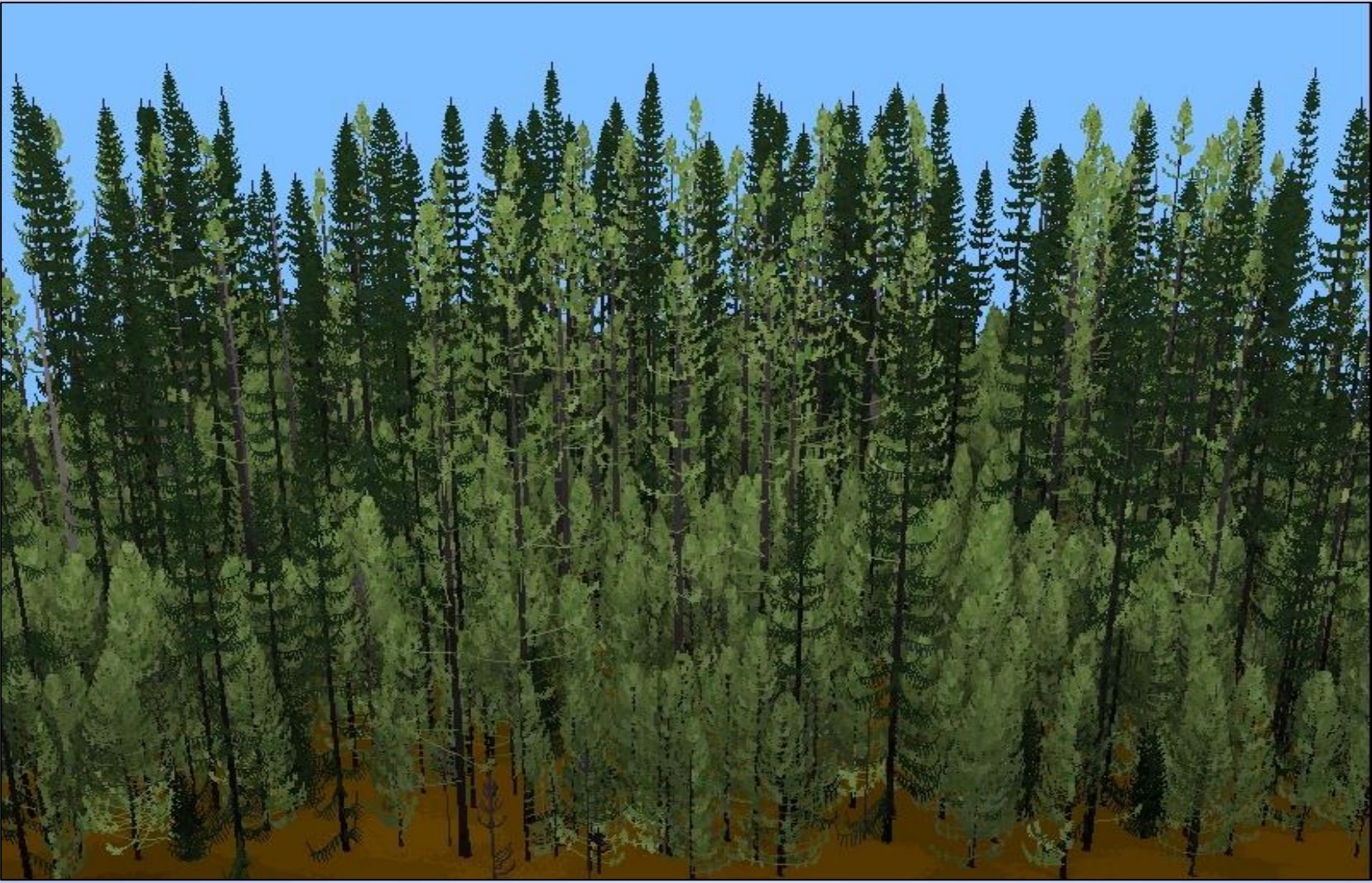




## **Conclusions**

- Fire supply challenges are significant
- Fibre supply opportunities exist but are generally in low value and higher cost profiles
- Focus needs to be on product value and jobs per cubic metre rather than a volume and through put

Ministry of **Forests, Lands and  
Natural Resource Operations**



# Ministry of Forests, Lands and Natural Resource Operations



harvest m<sup>3</sup>/year

## Projected Harvest Forecast Provincial TSAs and TFLs (February, 2018)

