

| BUILDING SITE INFORMATION | | | |
|---------------------------------|--|--|--|
| 420 WEBSTER AVENUE, QUESNEL, BC | | | |

| BUILDING WATER SERVICE | | | |
|---|---------------|-------|---------------|
| PIPING SIZED USING AVERAGE PRESSURE LOSS METHOD | | | |
| DESCRIPTION | FIXTURE UNITS | USGPM | LITRES/SECOND |
| DOMESTIC WATER | 61.6 | 32.48 | 2.05 |
| TOTAL WATER SERVICE | 61.6 | 32.48 | 2.05 |

| BUILDING SANITARY LOAD | |
|------------------------|---------------|
| DESCRIPTION | FIXTURE UNITS |
| BUILDING | 61 |
| TOTAL SANITARY SERVICE | 61 |

| BUILDING STORM LOAD | | |
|--|------------------------|--------|
| (BASED ON 10MM/15MIN RAINFALL INTENSITY) | | |
| DESCRIPTION | AREA (m ²) | LITRES |
| BUILDING | 282 | 2,820 |
| SITE | - | - |
| TOTAL STORM SERVICE | 282 | 2,820 |

| BUILDING GAS LOAD | |
|--------------------------|---------|
| DESCRIPTION | BTU/H |
| FURNACE, FLUR-1 | 110,000 |
| FURNACE, FLUR-2 | 88,000 |
| HOT WATER TANK, HWT-1 | 125,000 |
| TOTAL GAS SERVICE | 323,000 |
| LENGTH OF PIPE | 40 FT |
| GAS PRESSURE IN BUILDING | 2 PSI |

| BUILDING ENERGY - MECHANICAL | |
|------------------------------|--------------------------------------|
| HVAC DESIGN | |
| ENERGY STANDARD/CODE | ASHRAE 90.1-2016 |
| COMPLIANCE PATH | PRESCRIPTIVE |
| DESIGN METHOD | MANDATORY PROVISIONS & PRESCRIPTIVE |
| IN ACCORDANCE WITH | SECTION 6 |
| CLIMATE ZONE | 5 |
| VENTILATION | ASHRAE 62.1-2001 (EXCEPT ADDENDUM N) |

| GENERAL NOTES: | |
|----------------|--|
| 1. | INSTALLATIONS SHALL BE IN ACCORDANCE WITH THE BRITISH COLUMBIA BUILDING CODE 2018, BRITISH COLUMBIA PLUMBING CODE 2018, LOCAL BUILDING BYLAWS, MUNICIPAL GUIDELINES AND REQUIREMENTS WHERE APPLICABLE. |
| 2. | MECHANICAL SERVICES ARE SCHEMATIC REPRESENTATION ONLY. MECHANICAL CONTRACTOR SHALL FIELD MEASURE ALL MATERIAL PRIOR TO INSTALLATION. PROVIDE OFFSETS WHERE NECESSARY TO AVOID CONFLICT WITH STRUCTURAL AND ALL OTHER TRADES. |

KEYPLAN:

| | | | |
|-----|------------|------------------------------|----|
| 4 | 2022-06-24 | ISSUED FOR TENDER | MW |
| 3 | 2022-06-17 | ISSUED FOR BP / TENDER | MW |
| 2 | 2021-07-19 | ISSUED FOR ELEC COORDINATION | MW |
| 1 | 2021-07-16 | ISSUED FOR REVIEW | MW |
| No. | DATE | DESCRIPTION | BY |

COPYRIGHT RESERVED:
Everything shown hereon is for use on this project only and may not be reproduced without the written permission of ROCKY POINT ENGINEERING LTD. and unless the reproduction carries their name.

SEAL:

CLIENT:

PROJECT:
QUESNEL & DISTRICT DAYCARE SOCIETY
420 WEBSTER AVENUE
QUESNEL, BC

DRAWING NAME:
FOUNDATION PLAN

PROJECT NUMBER:
21424-T

DRAWN BY: GPJUS
DESIGNED BY: MW
APPROVED BY: MW
SCALE: AS NOTED

DRAWING:

M01

| SYMBOL SCHEDULE | |
|-----------------|-------------------------------------|
| NEW | |
| | SUPPLY OR OUTDOOR AIR DUCT UP |
| | SUPPLY OR OUTDOOR AIR DUCT DOWN |
| | RETURN AIR DUCT UP |
| | RETURN AIR DUCT DOWN |
| | EXHAUST AIR DUCT UP |
| | EXHAUST AIR DUCT DOWN |
| | OUTSIDE AIR DUCT UP |
| | OUTSIDE AIR DUCT DOWN |
| | TURNING VANES |
| | ACOUSTIC INSULATION |
| | BALANCING DAMPER |
| | BACK DRAFT DAMPER |
| | OPPOSED BLADE DAMPER |
| | ACCESS PANEL |
| | DUCT OR PIPE CAP-OFF |
| | SUPPLY AIR DIFFUSER |
| | SUPPLY AIR GRILLE |
| | EXHAUST AIR GRILLE |
| | RETURN AIR GRILLE |
| | DOMESTIC COLD WATER (DOW) |
| | DOMESTIC HOT WATER (DHW) |
| | DOMESTIC HOT WATER RECIRC. (DHWR) |
| | SANITARY VENT |
| | SANITARY SEWER |
| | STORM SEWER |
| | RADON |
| | PIPE CLEAN-OUT |
| | PIPE CLEAN-OUT TO GRADE |
| | DRAIN TILE |
| | NATURAL GAS |
| | DIRECTION OF FLOW |
| | SLOPE OF PIPE OR DUCT |
| | PIPE DROP |
| | PIPE RISE |
| | PIPE TEE DOWN |
| | PIPE TEE UP |
| | PIPE UNION |
| | PIPE REDUCER |
| | GATE VALVE (NORMALLY OPEN) |
| | GATE VALVE (NORMALLY CLOSED) |

| SYMBOL SCHEDULE | |
|-----------------|--------------------------|
| NEW | |
| | CHECK VALVE |
| | BALANCING VALVE |
| | PRESSURE REDUCING VALVE |
| | STRAINER |
| | RELIEF VALVE |
| | BACKFLOW PREVENTOR |
| | TEMPERATURE GAUGE |
| | PRESSURE GAUGE |
| | PUMP |
| | OPEN DRAIN |
| | FLOOR DRAIN |
| | FUNNEL FLOOR DRAIN |
| | ROOF DRAIN |
| | THERMOSTAT |
| | ELECTRIC SWITCH |
| | GRILLE TYPE |
| | NECK / GRILLE SIZE |
| | AIR VOLUME |
| | EQUIPMENT / FIXTURE TYPE |
| | GENERAL NOTE |
| | KEYED NOTE |
| | DRAWING REVISION |
| | DETAIL NUMBER |
| | DRAWING NUMBER |
| | SECTION NUMBER |
| | DRAWING NUMBER |
| | UNDER-CUT DOOR |
| | SUPPLY AIR |
| | RETURN AIR |
| | OUTDOOR AIR |
| | EXHAUST AIR |
| | TRANSFER AIR |
| | MANHOLE |
| | CATCH BASIN |
| | RAIN WATER LEADER |
| | WET VENT |
| | TAMPER SWITCH |
| | NOT IN CONTRACT |
| | NOT TO SCALE |
| | COMPLETE WITH |

| | | | |
|-----|------------|------------------------------|----|
| 4 | 2022-06-24 | ISSUED FOR TENDER | MW |
| 3 | 2022-06-17 | ISSUED FOR BP / TENDER | MW |
| 2 | 2021-07-19 | ISSUED FOR ELEC COORDINATION | MW |
| 1 | 2021-07-16 | ISSUED FOR REVIEW | MW |
| No. | DATE | DESCRIPTION | BY |

COPYRIGHT RESERVED:
Everything shown hereon is for use on this project only and may not be reproduced without the written permission of ROCKY POINT ENGINEERING LTD. and unless the reproduction carries their name.

SEAL:

CLIENT:

PROJECT:

QUESNEL & DISTRICT
DAYCARE SOCIETY

420 WEBSTER AVENUE
QUESNEL, BC

DRAWING NAME:

BASEMENT PLAN

PROJECT NUMBER:

21424-T

DRAWN BY:

GRJUS

DESIGNED BY:

MW

APPROVED BY:

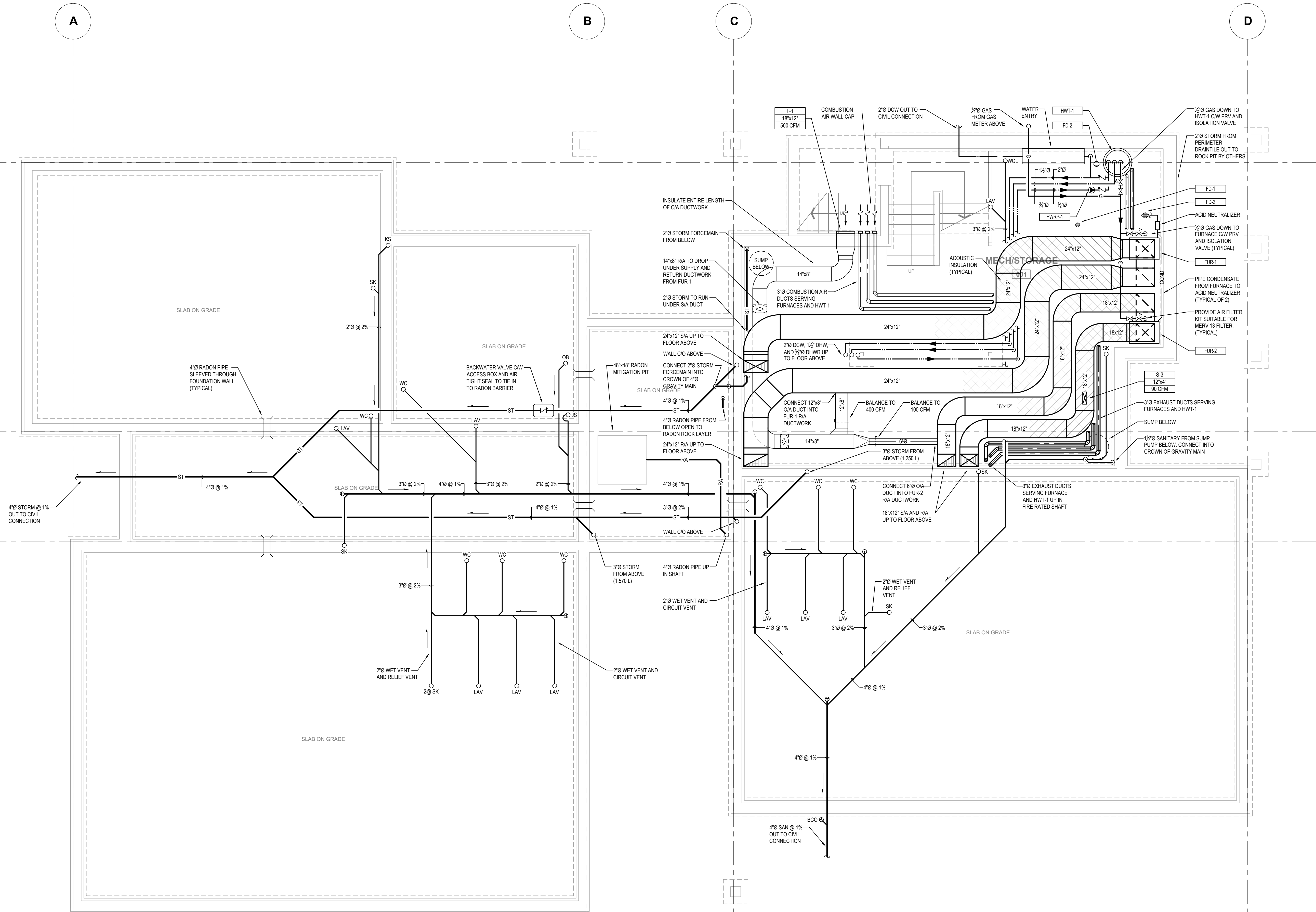
MW

SCALE:

AS NOTED

DRAWING:

M02



NORTH
1
M02
BASEMENT PLAN
1/4" = 1'-0"

| PLUMBING FIXTURE SERVICE CONNECTIONS (U.N.O.) | | |
|---|-----|-------|
| | SAN | VENT |
| WATER CLOSET (WC) | 3"Ø | - |
| LAVATORY (WET VENT) (LAV) | 2"Ø | 1/2"Ø |
| SINK (SK) | 2"Ø | 1/2"Ø |
| KITCHEN SINK (KS) | 2"Ø | 1/2"Ø |
| JANITOR SINK (JS) | 2"Ø | 1/2"Ø |
| CLOTHES WASHER OUTLET BOX (OB) | 2"Ø | 1/2"Ø |

| | | | |
|-----|------------|------------------------------|----|
| 4 | 2022-06-24 | ISSUED FOR TENDER | MW |
| 3 | 2022-06-17 | ISSUED FOR BP / TENDER | MW |
| 2 | 2021-07-19 | ISSUED FOR ELEC COORDINATION | MW |
| 1 | 2021-07-16 | ISSUED FOR REVIEW | MW |
| No. | DATE | DESCRIPTION | BY |

COPYRIGHT RESERVED:
Everything shown hereon is for use on this project only and may not be reproduced without the written permission of ROCKY POINT ENGINEERING LTD. and unless the reproduction carries their name.

SEAL:

CLIENT:

PROJECT:

QUESNEL & DISTRICT
DAYCARE SOCIETY

420 WEBSTER AVENUE
QUESNEL, BC

DRAWING NAME:

MAIN FLOOR PLUMBING PLAN

PROJECT NUMBER:

21424-T

DRAWN BY:

GRUS

DESIGNED BY:

MW

APPROVED BY:

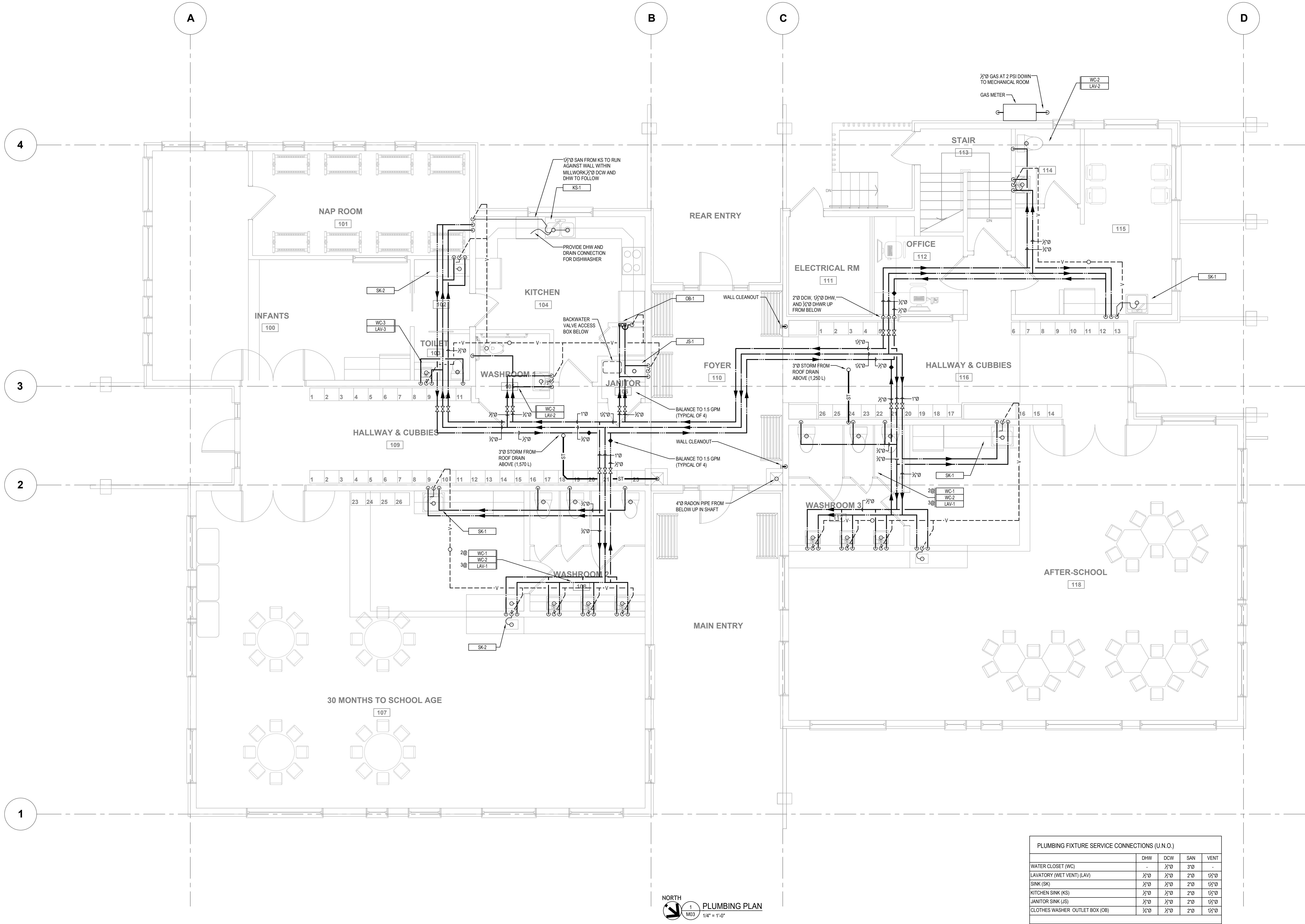
MW

SCALE:

AS NOTED

DRAWING:

M03



KEYPLAN:

| | | | |
|-----|------------|------------------------------|----|
| 4 | 2022-06-24 | ISSUED FOR TENDER | MW |
| 3 | 2022-06-17 | ISSUED FOR BP / TENDER | MW |
| 2 | 2021-07-19 | ISSUED FOR ELEC COORDINATION | MW |
| 1 | 2021-07-16 | ISSUED FOR REVIEW | MW |
| No. | DATE | DESCRIPTION | BY |

COPYRIGHT RESERVED:
Everything shown hereon is for use on this project only and may not be reproduced without the written permission of ROCKY POINT ENGINEERING LTD. and unless the reproduction carries their name.

SEAL:

CLIENT:

PROJECT:

QUESNEL & DISTRICT
DAYCARE SOCIETY

420 WEBSTER AVENUE
QUESNEL, BC

DRAWING NAME:

MAIN FLOOR HVAC PLAN

PROJECT NUMBER:

21424-T

DRAWN BY:

GPJS

DESIGNED BY:

MW

APPROVED BY:

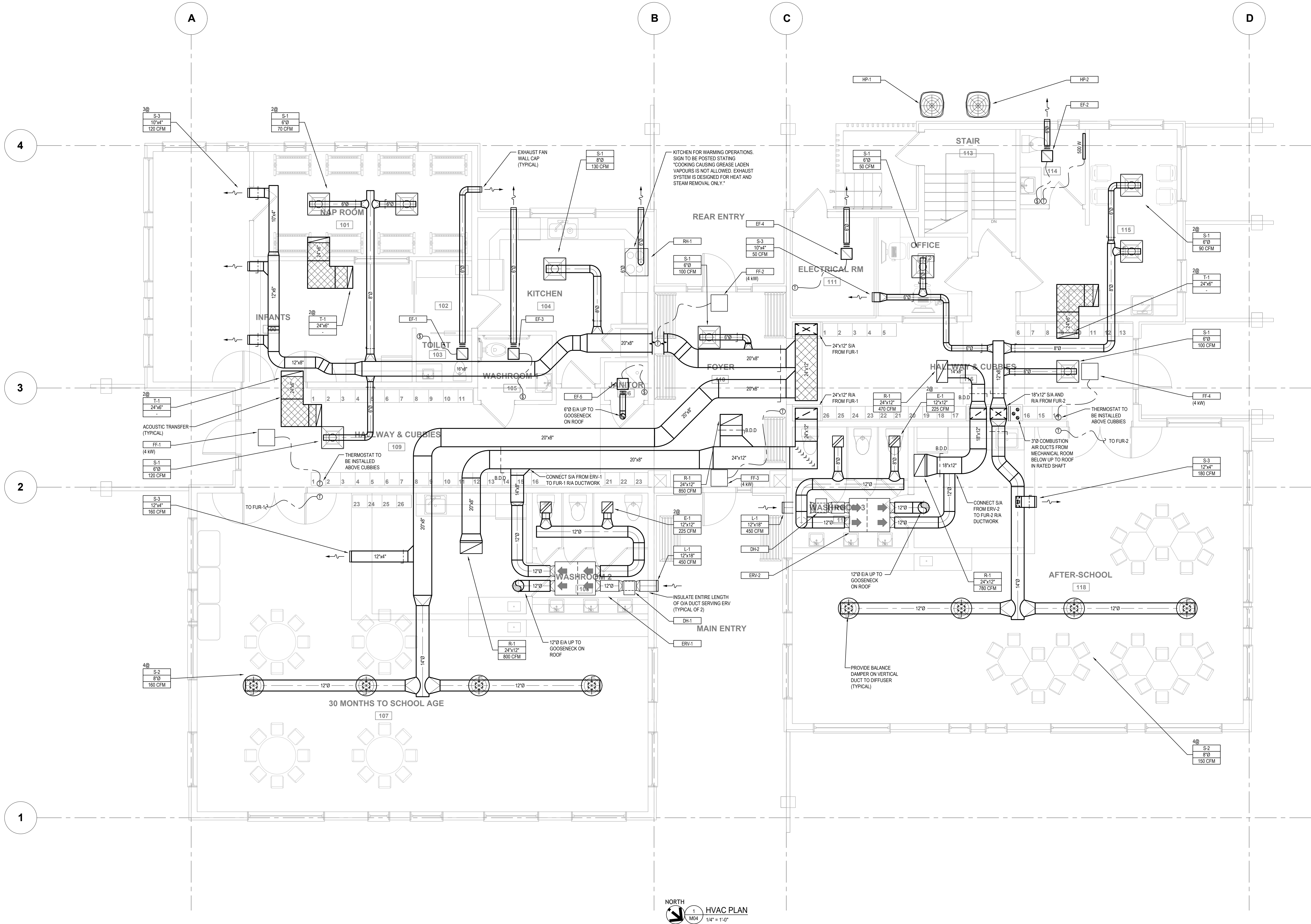
MW

SCALE:

AS NOTED

DRAWING:

M04



| | | | |
|-----|------------|------------------------------|----|
| 4 | 2022-06-24 | ISSUED FOR TENDER | MW |
| 3 | 2022-06-17 | ISSUED FOR BP / TENDER | MW |
| 2 | 2021-07-19 | ISSUED FOR ELEC COORDINATION | MW |
| 1 | 2021-07-16 | ISSUED FOR REVIEW | MW |
| No. | DATE | DESCRIPTION | BY |

COPYRIGHT RESERVED:
Everything shown hereon is for use on this project only and may not be reproduced without the written permission of ROCKY POINT ENGINEERING LTD. and unless the reproduction carries their name.

SEAL:

CLIENT:

PROJECT:

QUESNEL & DISTRICT
DAYCARE SOCIETY

420 WEBSTER AVENUE
QUESNEL, BC

DRAWING NAME:

ROOF PLAN

PROJECT NUMBER:

21424-T

DRAWN BY:

GRJ/S

DESIGNED BY:

MW

APPROVED BY:

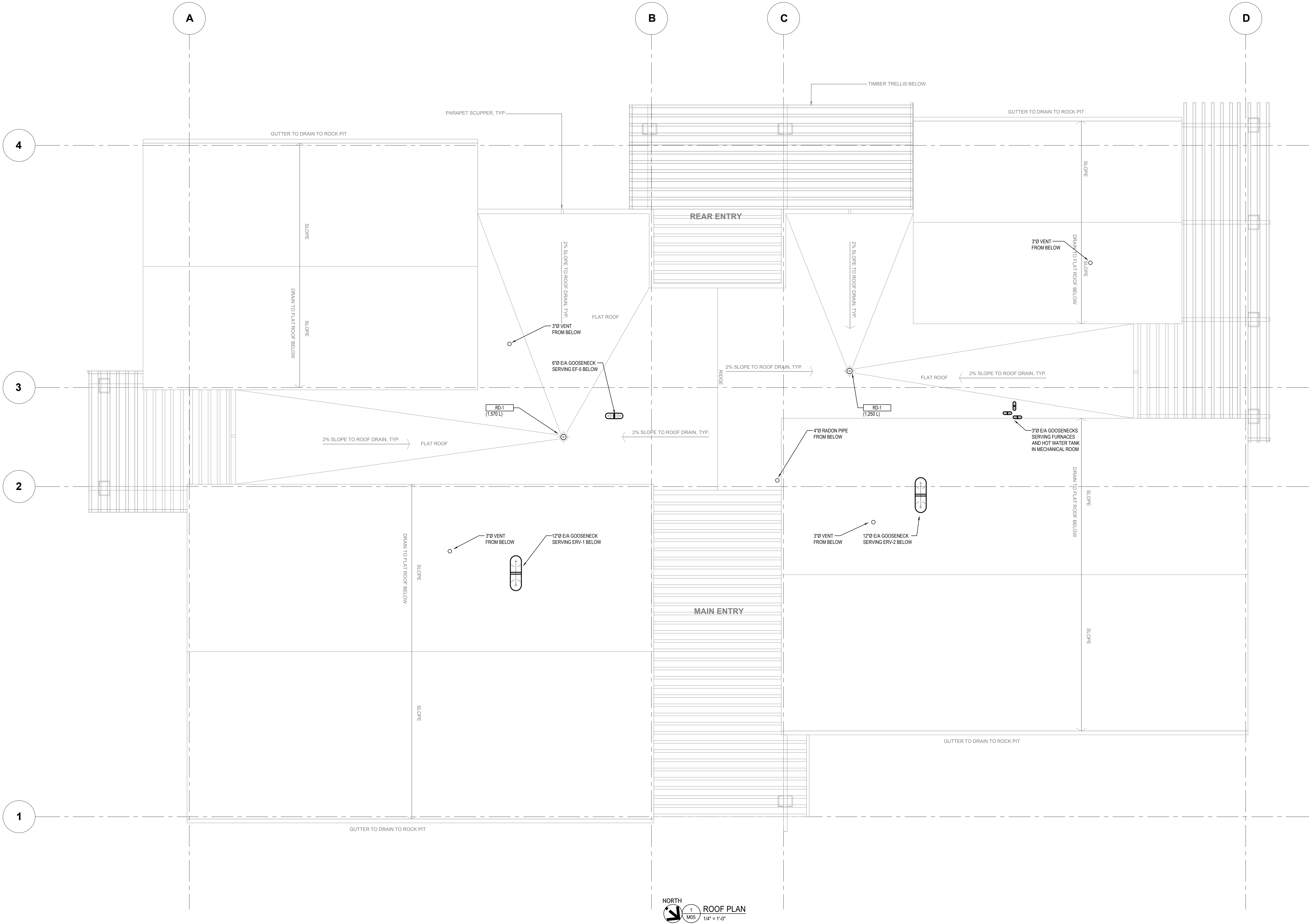
MW

SCALE:

AS NOTED

DRAWING:

M05



| | | | |
|-----|------------|------------------------------|----|
| 4 | 2022-06-24 | ISSUED FOR TENDER | MW |
| 3 | 2022-06-17 | ISSUED FOR BP / TENDER | MW |
| 2 | 2021-07-19 | ISSUED FOR ELEC COORDINATION | MW |
| 1 | 2021-07-16 | ISSUED FOR REVIEW | MW |
| No. | DATE | DESCRIPTION | BY |

COPYRIGHT RESERVED:
Everything shown hereon is for use on this project only and may not be reproduced without the written permission of ROCKY POINT ENGINEERING LTD. and unless the reproduction carries their name.

SEAL:

CLIENT:

PROJECT:

QUESNEL & DISTRICT
DAYCARE SOCIETY

420 WEBSTER AVENUE
QUESNEL, BC

DRAWING NAME:

MECHANICAL DETAILS

PROJECT NUMBER:

21424-T

DRAWN BY:

GPJUS

DESIGNED BY:

MW

APPROVED BY:

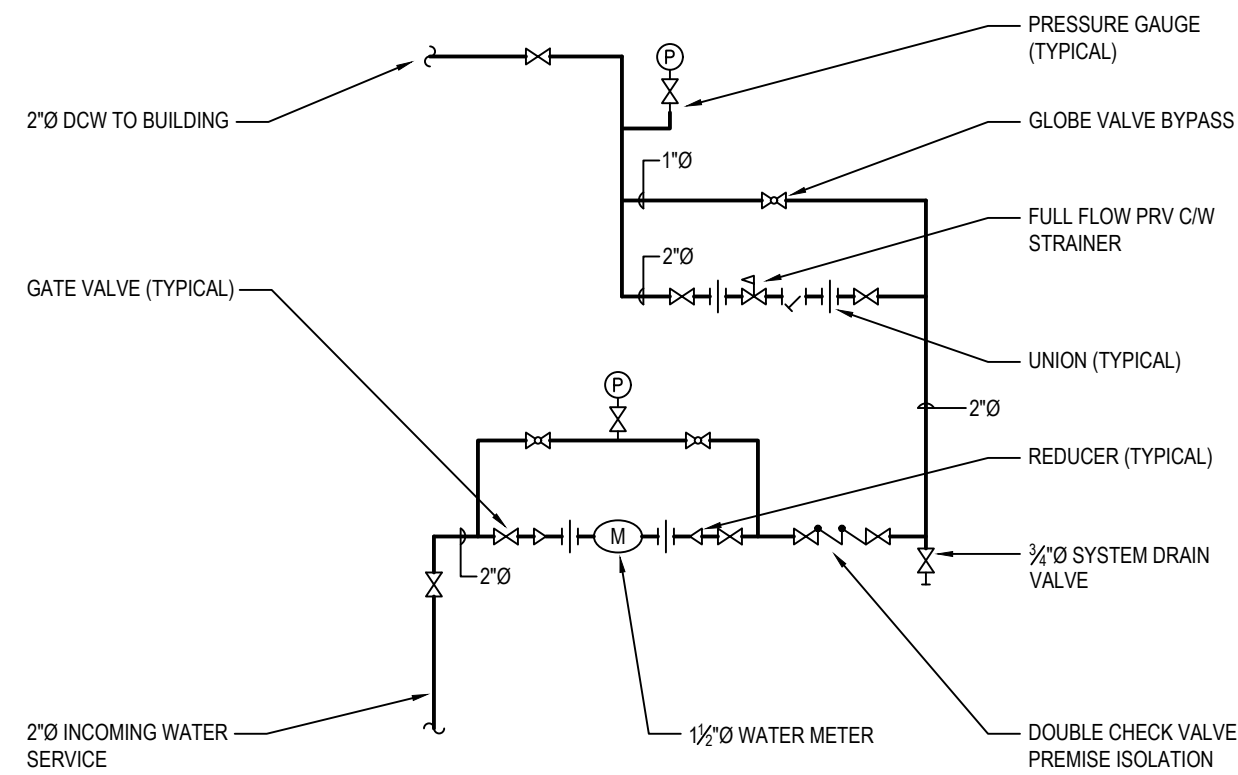
MW

SCALE:

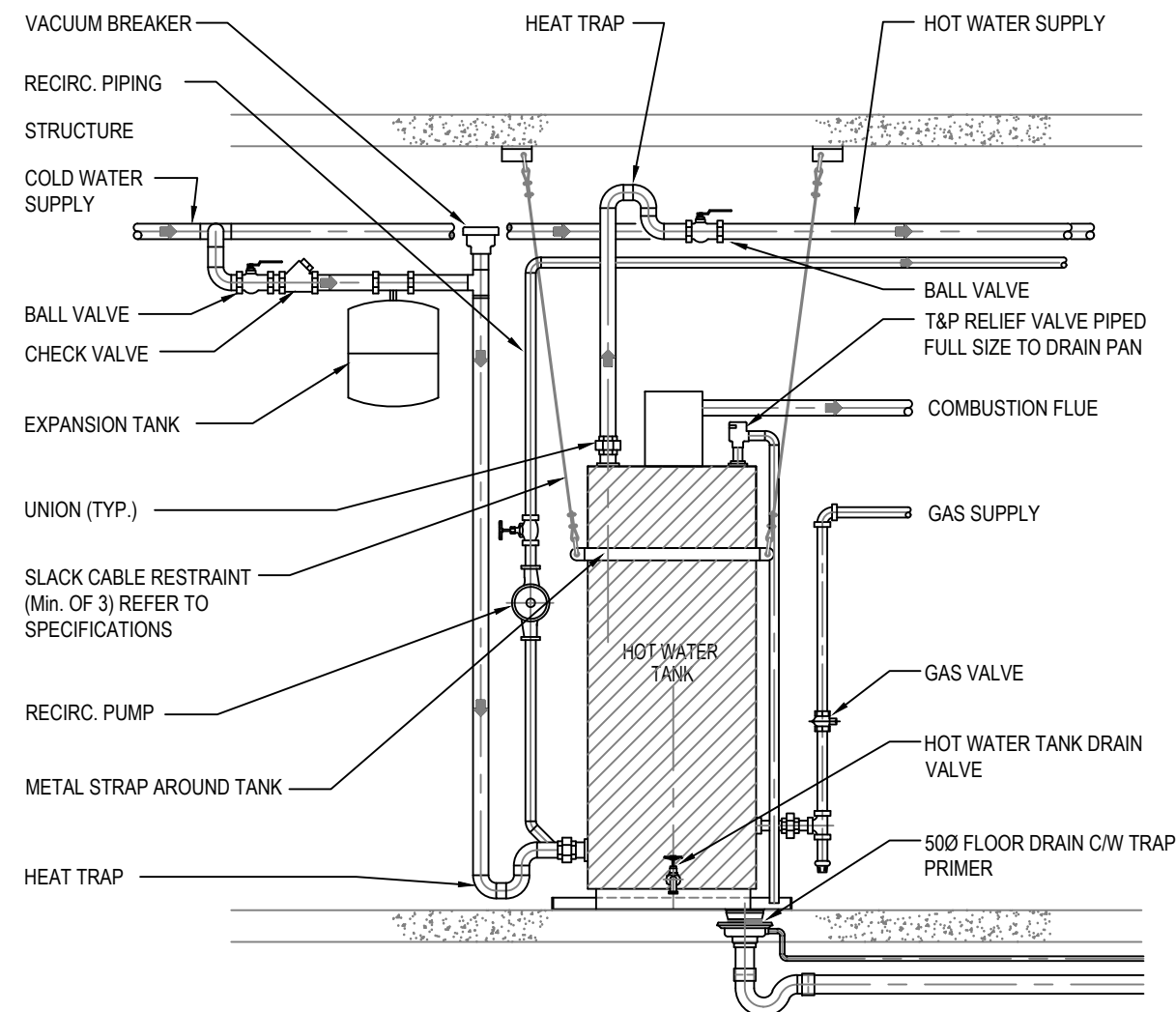
AS NOTED

DRAWING:

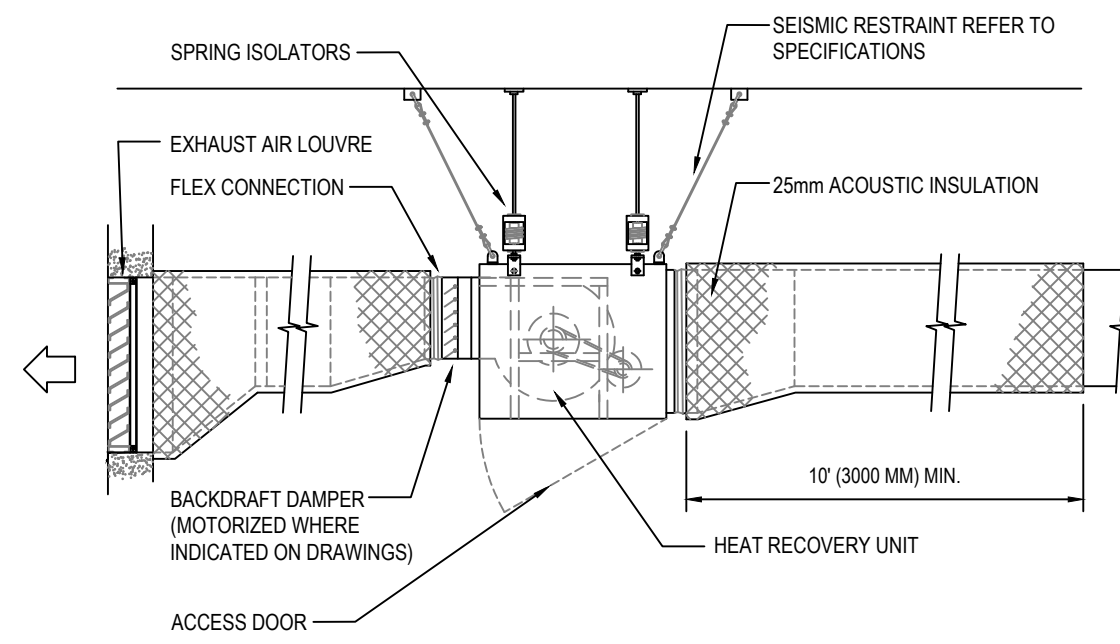
M06



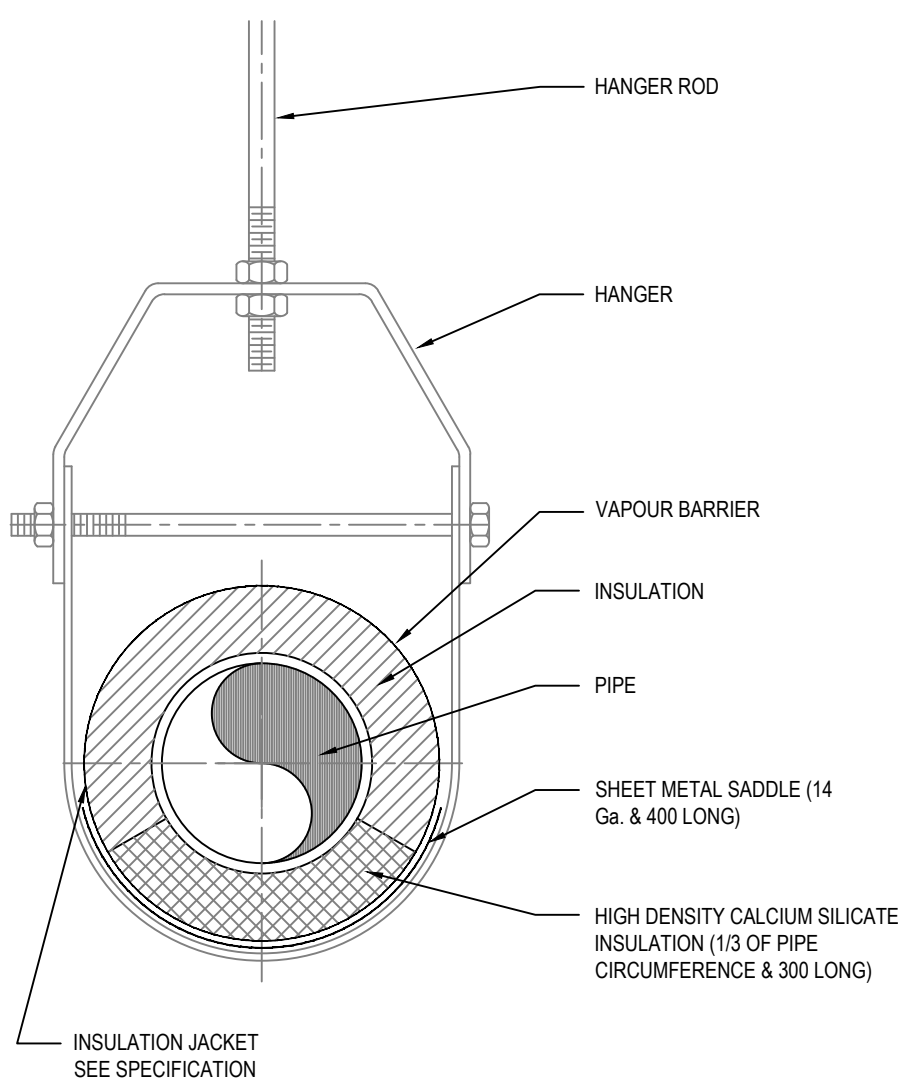
1 WATER ENTRY DETAIL
M06 N.T.S.



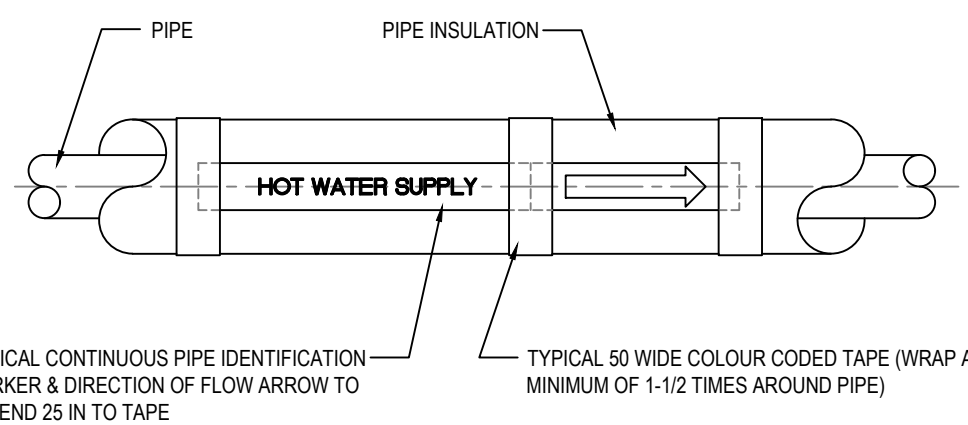
2 DOMESTIC HOT WATER TANK DETAIL
M06 N.T.S.



3 HRV DETAIL
M06 N.T.S.

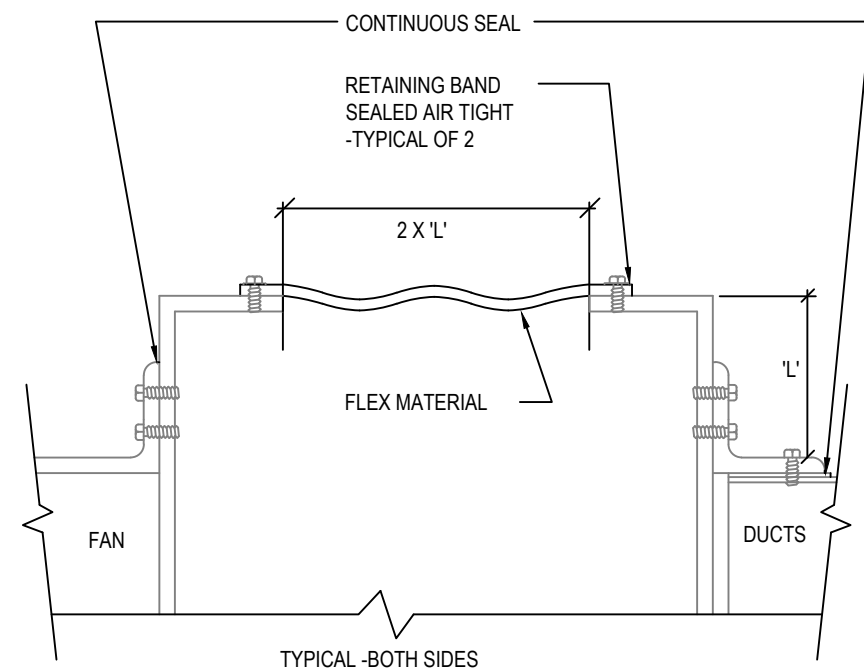


4 INSULATED PIPE HANGER DETAIL
M06 N.T.S.



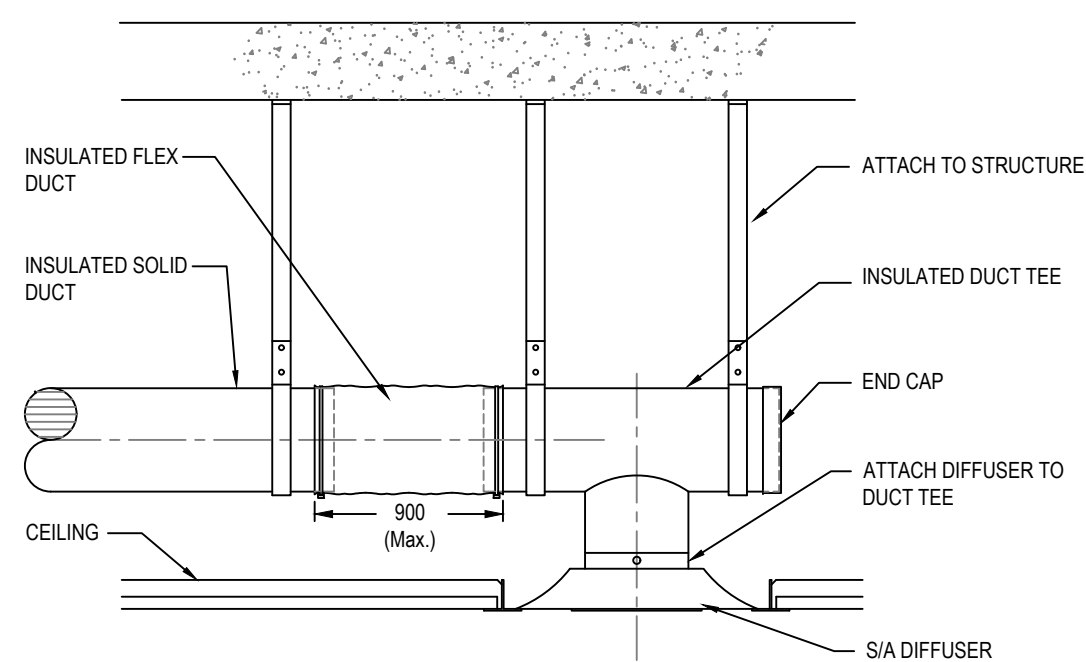
NOTES
APPLY A CONTINUOUS COATING OF CONTACT CEMENT TO THE LABEL TO ENSURE PERMANENT ADHESION
REFER TO SPECIFICATION FOR COLOUR CODING OF SERVICES
INSTALL AT 15000 INTERVALS (MAXIMUM) AND AT EACH CHANGE DIRECTION.

5 PIPE IDENTIFICATION DETAIL
M06 N.T.S.

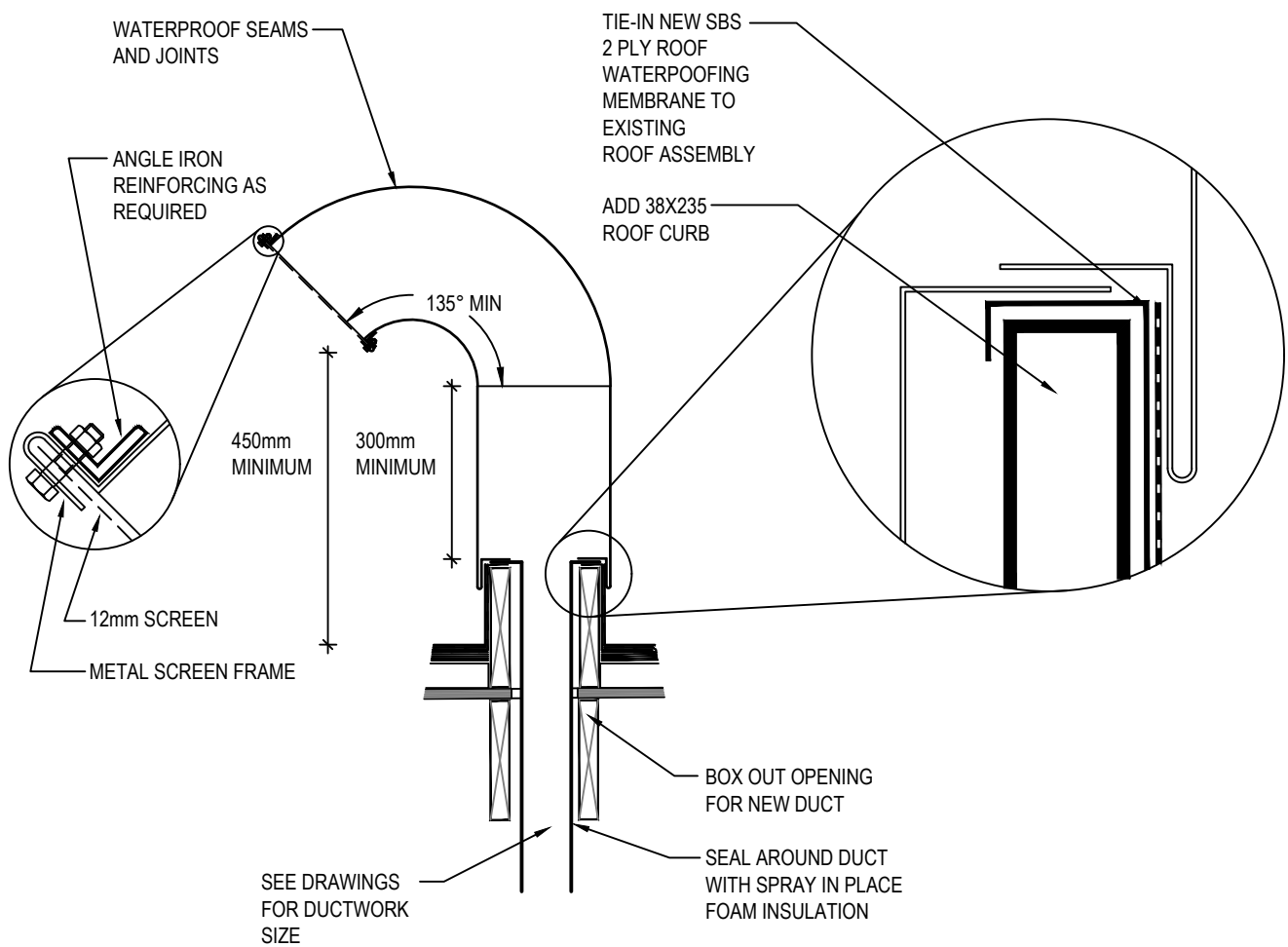


6 FLEXIBLE FAN/DUCT CONNECTION
M06 N.T.S.

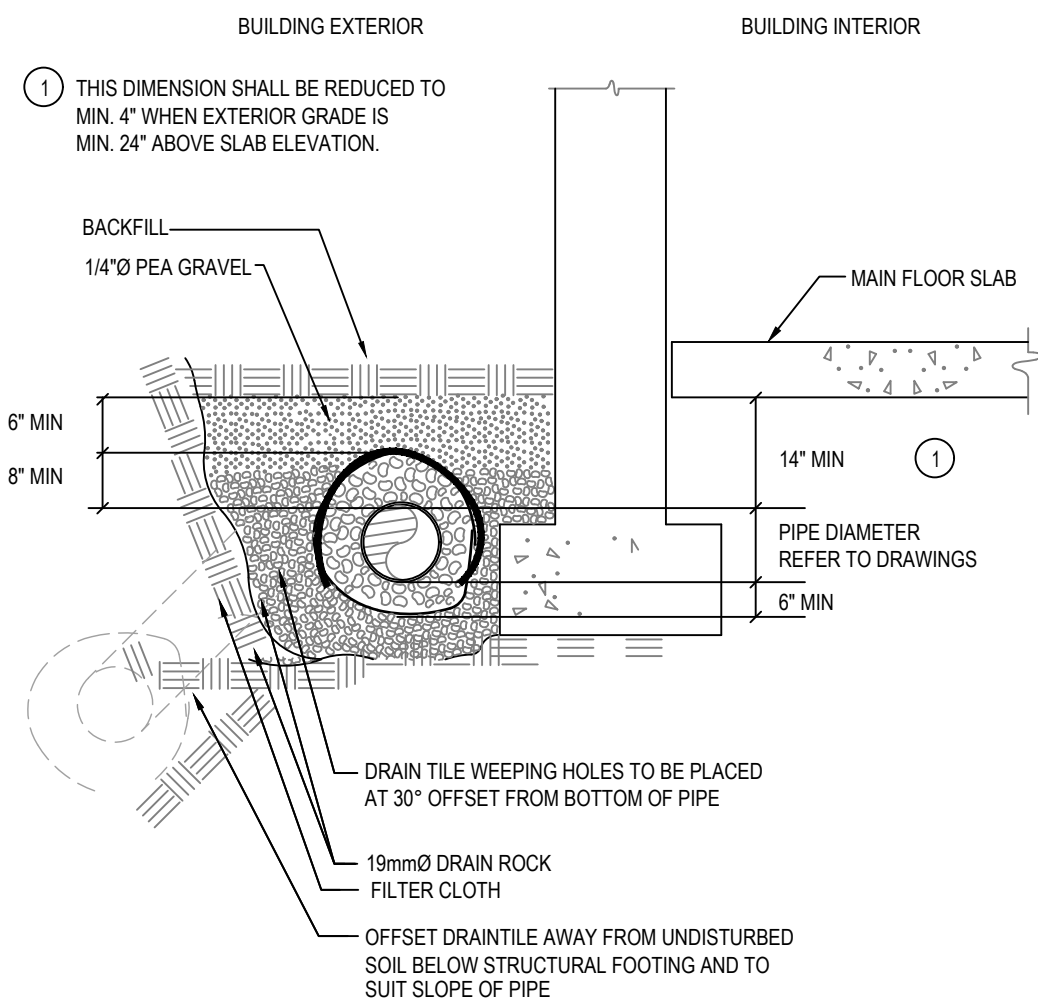
NOTE: SEISMIC RESTRAINTS AS PER SPECIFICATIONS



7 SUPPLY AIR DIFFUSER DETAIL
M06 N.T.S.

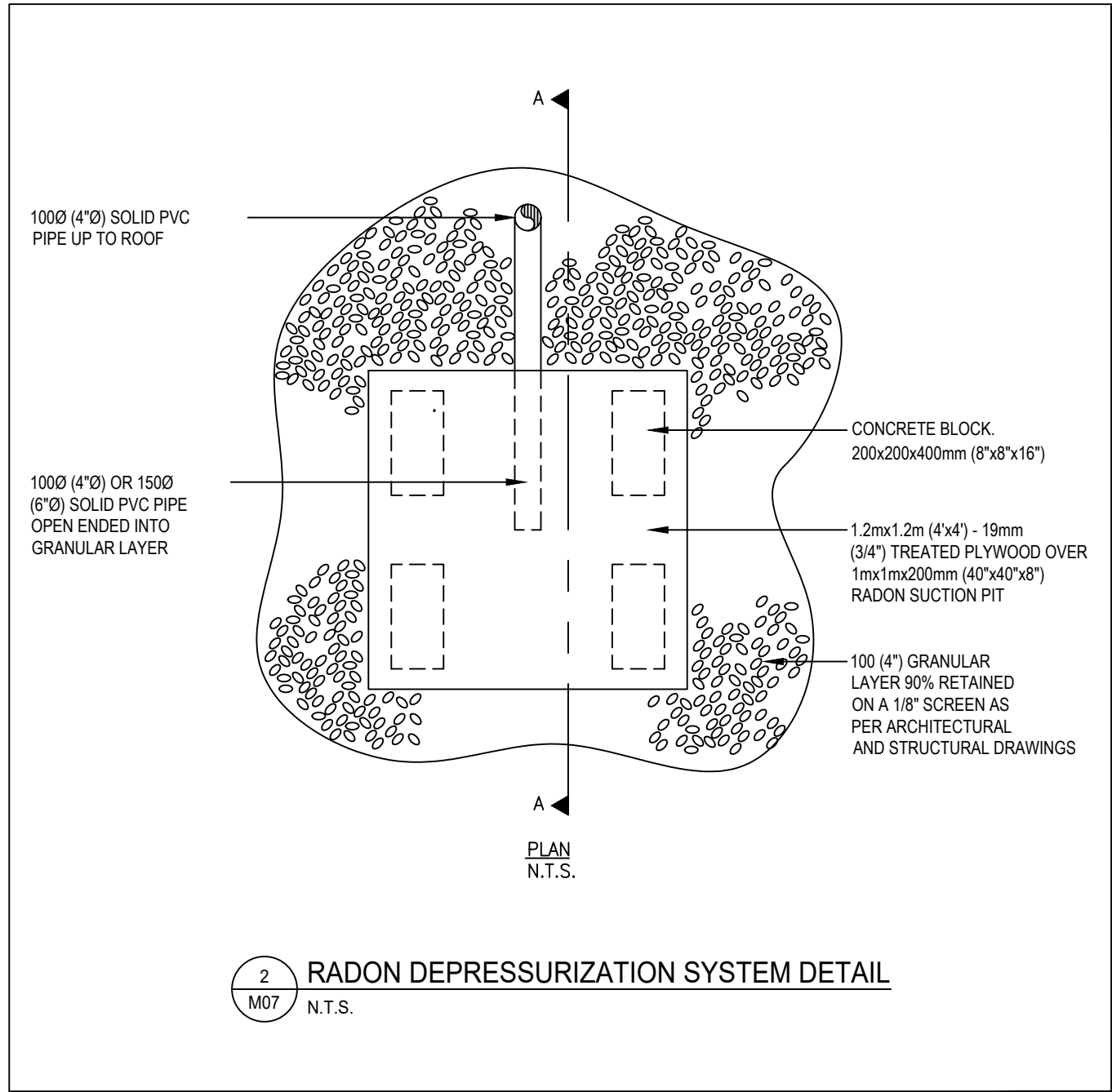
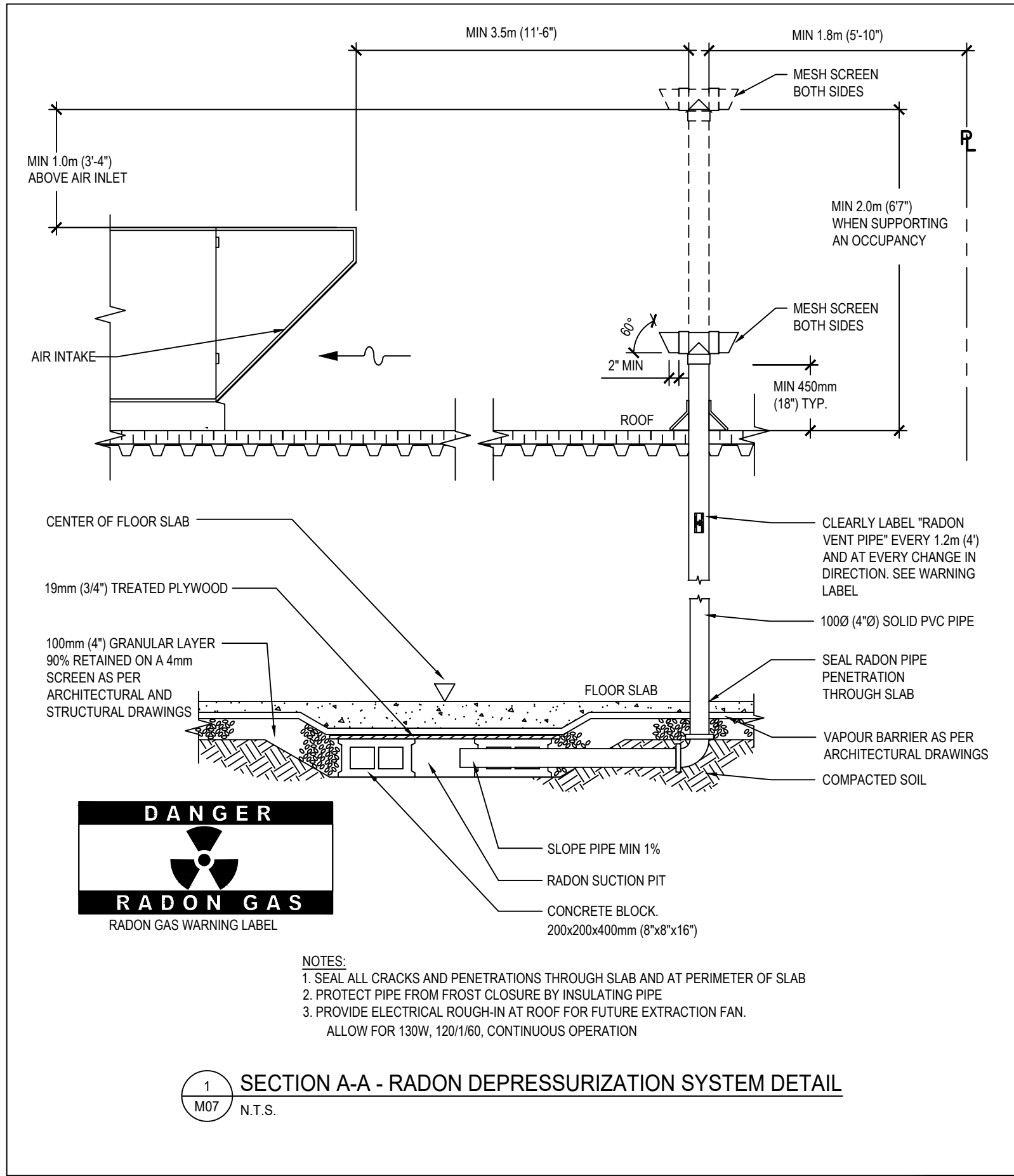


8 GOOSE NECK DETAIL
M06 N.T.S.



9 PERIMETER DRAIN TILE
M06 N.T.S.

| MOTOR LIST | | | | | | | | | | | | | | | | | | | | | |
|--|-------------------------|---------------------|---------------------------|---|-------------------------|--------------------------------|----|----|----------------|---------|---|---------|---|--------------|---|---------|---|---|---|-----------|-----------------------------------|
| ABBREVIATIONS: | | | STARTERS: | | | PILOT DEVICES: | | | | | | | | | | | | | | | |
| M=Mechanical DIV 15 | | | VSD=Variable speed drive | | | F=Float Switch | | | | | | | | | | | | | | | |
| E=Electrical DIV 16 | | | MG=Magnetic starter (HOA) | | | T=Thermostat | | | | | | | | | | | | | | | |
| B.A.S.= Building Automation System | | | MN=Manual starter | | | P=Pressure Switch | | | | | | | | | | | | | | | |
| C.C.F.=Firefighters Central Control Facility | | | INT=Integral Starter | | | C=Time Clock | | | | | | | | | | | | | | | |
| EMERG. PWR.=Emergency Power | | | | | | I=Interlock | | | | | | | | | | | | | | | |
| | | | | | | S=Manual Switch | | | | | | | | | | | | | | | |
| | | | | | | ET=Electronic Thermostat | | | | | | | | | | | | | | | |
| | | | | | | FA=Fire Alarm | | | | | | | | | | | | | | | |
| | | | | | | O=Other | | | | | | | | | | | | | | | |
| | | | | | | GS= Gas Sensor | | | | | | | | | | | | | | | |
| | | | | | | B = Building Automation System | | | | | | | | | | | | | | | |
| UNIT No. | | | UNIT DESCRIPTION | | LOCATION or ROOM NUMBER | | PH | CV | LOAD | STARTER | | DISCONN | | PILOT DEVICE | | REMARKS | | | | | |
| | | | | | | | | | | Y | S | I | W | Y | S | | I | W | | | |
| ERV-1 | Heat Recovery Unit | Preschool WR | 120 | 1 | 60 | MCA 9 | | | 15 MOCP 0.6 HP | INT | M | E | E | E | E | C | M | E | E | Timeclock | |
| ERV-2 | Heat Recovery Unit | After school WR | 120 | 1 | 60 | MCA 9 | | | 15 MOCP 0.6 HP | INT | M | E | E | E | E | E | C | M | E | E | Timeclock |
| DH-1 | Duct Heater | Preschool WR | 240 | 1 | 60 | 3.5 kW | | | | | | | | E | M | E | T | M | M | E | SCR Controller & Duct TSTAT |
| DH-2 | Duct Heater | After school WR | 240 | 1 | 60 | 3.5 kW | | | | | | | | E | M | E | T | M | M | E | SCR Controller & Duct TSTAT |
| HWT-1 | Domestic Hot Water Tank | Mechanical | 120 | 1 | 60 | 5 A | | | | | | | | E | E | E | T | M | E | E | |
| HWRP-1 | Hot Water Recirc Pump | Mechanical Room | 120 | 1 | 60 | 1/6 HP | | | 2.15 A | INT | M | M | E | E | E | E | S | E | E | E | Continuous Operation |
| EF-1 | Exhaust Fan | Infant WR | 120 | 1 | 60 | 80 W | | | | MN | E | E | E | E | E | E | S | E | E | E | Wire to Wall Switch |
| EF-2 | Exhaust Fan | Staff WR | 120 | 1 | 60 | 80 W | | | | MN | E | E | E | E | E | E | S | E | E | E | Wire to Wall Switch |
| EF-3 | Exhaust Fan | Accessible WR | 120 | 1 | 60 | 80 W | | | | MN | E | E | E | E | E | E | S | E | E | E | Wire to Wall Switch |
| EF-4 | Exhaust Fan | Electrical Room | 120 | 1 | 60 | 80 W | | | | MN | E | E | E | E | E | E | S | E | E | E | Wire to Reverse Acting Thermostat |
| EF-5 | Exhaust Fan | Janitor Room | 120 | 1 | 60 | 80 W | | | | MN | E | E | E | E | E | E | S | E | E | E | Wire to Wall Switch |
| RH-1 | Rangehood | Kitchen | 120 | 1 | 60 | 1.9 A | | | | | | | | | | | | | | | |
| FUR-1 | Furnace | Mechanical | 120 | 1 | 60 | FLA 10.9 | | | MOCP 15 | INT | M | E | E | E | E | E | T | M | E | E | |
| FUR-2 | Furnace | Mechanical | 120 | 1 | 60 | FLA 8.4 | | | MOCP 15 | INT | M | E | E | E | E | E | T | M | E | E | |
| HP-1 | Heat Pump Unit | Outside on Pad | 240 | 1 | 60 | MCA 25.8, MOCP 40, FLA 21.1 | | | | INT | M | M | E | E | E | E | T | M | E | E | Unit Serves FUR-1 |
| HP-2 | Heat Pump Unit | Outside on Pad | 240 | 1 | 60 | MCA 20.9, MOCP 35, FLA 17.3 | | | | INT | M | M | E | E | E | E | T | M | E | E | Unit Serves FUR-2 |
| SP-1 | Sump Pump | Mechanical Room | 120 | 1 | 60 | 1/2 HP | | | 8.0 A | INT | M | M | E | E | E | E | F | M | E | E | |
| STP-1 | Storm Sump Pump | Mechanical Room | 120 | 1 | 60 | 1/2 HP | | | 8.0 A | INT | M | M | E | E | E | E | F | M | E | E | |
| FF-1* | Force Flow Heater | SE Entrance Ceiling | | | | 4 kW | | | | | | | | E | E | E | T | E | E | E | On Unit |
| FF-2* | Force Flow Heater | SW Entrance Ceiling | | | | 4 kW | | | | | | | | E | E | E | T | E | E | E | On Unit |
| FF-3* | Force Flow Heater | NE Entrance Ceiling | | | | 4 kW | | | | | | | | E | E | E | T | E | E | E | On Unit |
| FF-4* | Force Flow Heater | NW Entrance Ceiling | | | | 4 kW | | | | | | | | E | E | E | T | E | E | E | On Unit |
| Additional Instructions: | | | | | | | | | | | | | | | | | | | | | |
| * Equipment supplied by Div. 16. | | | | | | | | | | | | | | | | | | | | | |



| ELECTRIC HEAT SCHEDULE | | | | | | | | | |
|---|--------------|--------------------|-------------|----------------|-------------------------|-----|----|----|---------|
| UNIT | MANUFACTURER | MODEL | AREA SERVED | CAPACITY WATTS | DUCT STAT SETPOINT (°F) | V | Ph | Hz | REMARKS |
| DH-1 | THERMOLEC | RFC-3.5-12x12-2401 | ERV-1 | 3.5 kW | 45 | 240 | 1 | 60 | 8.9 |
| DH-2 | THERMOLEC | RFC-3.5-12x12-2401 | ERV-2 | 3.5 kW | 45 | 240 | 1 | 60 | 8.9 |
| REMARKS: 1. WALL MOUNTED 2. CEILING MOUNTED 3. FULLY RECESSED 4. SEMI RECESSED 5. SURFACE INSTALL 6. WALL TSTAT 7. BUILT IN TSTAT 8. SCR CONTROLLER 9. DISCHARGE AIR TEMP SENSOR (INTERFACE WITH SCR CONTROLLER) | | | | | | | | | |

| HEAT PUMP SCHEDULE | | | | | | | | | |
|---|--------------|-------------|-------|-------------|--------------|-----------------|------------|-------------|---------|
| UNIT NUMBER | MANUFACTURER | MODEL | DUTY | REFRIGERANT | NOMINAL TONS | VOLTAGE V/PH/Hz | ELECT. MCA | ELECT. MOCP | REMARKS |
| HP-1 | LENNOX | EL16XP1-048 | FUR-1 | R-410A | 4.0 | 240/160 | 25.8 | 40 | 3 |
| HP-2 | LENNOX | EL16XP1-036 | FUR-2 | R-410A | 3.0 | 240/160 | 20.9 | 35 | 3 |
| REMARKS: 1. ULTRA LOW AMBIENT UNIT 2. CAPABLE OF COOLING DOWN TO -32°F 3. PROVIDE ADVANCED PROGRAMMABLE THERMOSTAT 4. PROVIDE WIND GUARDS AS REQUIRED | | | | | | | | | |

| ERV SCHEDULE | | | | | | | | | |
|--|--------------|---------|-------------|----------------|-------|---------|-------|-----|---------|
| UNIT | MANUFACTURER | MODEL | AREA SERVED | AIR VOLUME CFM | SP * | V/Ph/Hz | POWER | | REMARKS |
| ERV-1 | RENEWAIRE | EV450IN | FUR-1 | 450 | 0.563 | 120/160 | MCA | HP | |
| ERV-2 | RENEWAIRE | EV450IN | FUR-2 | 450 | 0.563 | 120/160 | 9.0 | 0.6 | 1.3,9 |
| REMARKS: 1. c/w DAMPER DEFROST 2. INTERLOCK RELAY 3. MERV 13 FILTER 4. BASIC CONTROL 5. SCR CONTROLLER 6. ARCTIC DEFROST MODE 7. RECIRCULATION DEFROST 8. WINDSOR 20 MIN. HIGH SPEED TIMER 9. TIMECLOCK | | | | | | | | | |

| GRILLES & DIFFUSER SCHEDULE | | | | | | | |
|-----------------------------|--------------|---------|----------|--------------|-----------------|--------|------------------|
| UNIT MARK | MANUFACTURER | MODEL | SERVICE | NOMINAL SIZE | CONNECTION SIZE | FINISH | REMARKS |
| S-1 | PRICE | SPD | SUPPLY | 24"x24" | SEE DWG | B12 | T-BAR OR SURFACE |
| S-2 | PRICE | RPD | SUPPLY | SEE DWG | SEE DWG | B12 | DUCT |
| S-3 | PRICE | 520/FLA | SEE DWG | SEE DWG | SEE DWG | B12 | SURFACE |
| R-1 | PRICE | 80 | RETURN | SEE DWG | SEE DWG | B12 | T-BAR OR SURFACE |
| E-1 | PRICE | 80 | EXHAUST | SEE DWG | SEE DWG | B12 | T-BAR OR SURFACE |
| T-1 | PRICE | 80 | TRANSFER | SEE DWG | SEE DWG | B12 | T-BAR OR SURFACE |
| L-1 | PRICE | DE635 | SUPPLY | SEE DWG | SEE DWG | B12 | SURFACE |

| PUMP SCHEDULE | | | | | | | | | |
|---|--------------|-----------|-----------------------|---------------------|------------|----------|---------|-----------------|-------------|
| UNIT NUMBER | MANUFACTURER | MODEL | DUTY | PUMP CAPACITY (GPM) | HEAD (FT.) | MOTOR HP | V/PH/Hz | SHIPPING WEIGHT | REMARKS |
| HWRP-1 | GRUNDOS | UPS 26-99 | DOMESTIC WATER RECIRC | 6 | 30 | FRACT. | 120/160 | 10.3 | 1.2 |
| STP-1 | ZOELLER | 900-0001 | DRAINTILE SUMP PUMP | 30 | 10 | 1/3 | 120/160 | 55 | 1.5,9,11,16 |
| SP-1 | ZOELLER | 900-0001 | LIFT SUMP PUMP | 30 | 10 | 1/3 | 120/160 | 55 | 1.5,9,11,16 |
| REMARKS: 1. COMPLETE WITH FLOW RATE AND PRESSURE DROP DATA STAMPED ON NAME PLATE 2. ALL BRONZE CONSTRUCTION 3. FLANGED PUMP CONNECTIONS 4. BRONZE IMPELLER, FULLY ENCLOSED, KEYED TO SHAFT 5. CARBON ROTATING SEAL AGAINST A STATIONARY CERAMIC SEAT 6. SUCTION DIFFUSER c/w STAINLESS STEEL STRAINER AND STABILIZING GUIDE VANES, FLANGED CONNECTIONS 7. TRIPLE DUTY VALVE c/w NON SLAM CHECK AND EFFECTIVE THROTTLING WITH FLOW MEASUREMENT CAPABILITY, FLANGED CONNECTIONS 8. HIGH GRADE HEAT TRACED CAST IRON BASEPLATE 9. DRIP PROOF, RESILIENT MOUNT, SLEEVE BEARING MOTOR 10. FOUR LIQUID LEVEL SWITCH IN WATER PROOF FLOAT BULBS WITH SUPPORT WIRING CHANNEL 11. INTEGRAL AUTOMATIC FLOAT CONTROL SYSTEM 12. OIL RESISTANT POWER CORD, REMOTE HIGH WATER AND OVERLOAD ALARM, CHECK VALVES 13. SUPPORT PUMP FROM ADJACENT PIPING 14. PUMP SUITABLE FOR FLUIDS OF 110°C (230° F) 15. 40% PROPYLENE GLYCOL 16. COMPLETE WITH MODEL CAST IRON 53 PUMP AND 18"x22" DELUXE BASIN. | | | | | | | | | |

| HOT WATER TANK SCHEDULE | | | | | | | | | |
|--|----------------|----------------|------------------------|---------|--------------|-----------|--------------------|------|---------|
| UNIT NUMBER | MANUFACTURER | MODEL | DUTY | EFF (%) | CAPACITY GAL | FUEL NPIE | BURNER INPUT BTU/H | AMPS | REMARKS |
| HWT-1 | BRADFORD WHITE | EF-60T-12SE-3N | DOMESTIC WATER HEATING | 96 | 60 | N | 125,000 | 15.0 | 570 |
| REMARKS: 1. SAFETY SHUT-OFF INTERLOCKED W/ FLUE DAMPER 2. ELECTRONIC IGNITION 3. LOW WATER CUT-OFF 4. LOW GAS PRESSURE SWITCH 5. HIGH GAS PRESSURE SWITCH 6. FLOW SWITCH 7. SEISMIC RESTRAINTS 8. DIRECT CONNECTION INTAKE AND EXHAUST 9. TEMP. & PRESSURE RELIEF VALVE 10. THERMISTOR 11. FLUE DAMPER KIT 12. OPERATING AQUASTAT 13. THREE PASS FLUE SYSTEM 14. MAXITROL GAS PRESSURE REGULATING VALVE 15. MODULATING GAS VALVE 16. ELECTRONIC MODULATING GAS VALVE 17. POWER VENT KIT 18. HIGH LIMIT TEMPERATURE CONTROL 19. CONDENSATE NEUTRALIZATION KIT 20. PROVIDE THERMAL EXPANSION TANK SUITABLE FOR POTABLE WATER | | | | | | | | | |

| FURNACE SCHEDULE | | | | | | | | | | | | |
|--|--------------|-----------------|----------------|----------------------|----------|-----------|------------|-------------|-----------|---------------|---------|-----------|
| UNIT | MANUFACTURER | MODEL | AREA | VENT & INTAKE INCHES | FUEL NIP | INPUT MBH | OUTPUT MBH | AIRFLOW CFM | SP INCHES | MOTOR FLA TON | COOLING | REMARKS |
| FUR-1 | LENNOX | EL286UH110XE60C | BUILDING SOUTH | 3" | N | 110 | 106 | 1,650 | 0.8 | 10.9 | 4.0 | 1.2,3,4,5 |
| FUR-2 | LENNOX | EL286UH090XE48C | BUILDING NORTH | 3" | N | 88 | 84 | 1,250 | 0.8 | 8.4 | 3.0 | 1.2,3,4,5 |
| REMARKS: 1. C/W EXTERNAL FILTER KIT SUITABLE FOR MERV 13 2. DX COIL TO MATCH w/ FURNACE & HP 3. TWO STAGE HEATING 4. c/w CONCENTRIC TERMINATION 5. c/w CONDENSATE NEUTRALIZER | | | | | | | | | | | | |

| FAN SCHEDULE | | | | | | | | | | | | |
|--|--------------|--------------|---------------------------|----------------|-----------|-------|-------|-------|---------|---------|--------------|----------------|
| UNIT NUMBER | MANUFACTURER | MODEL | DUTY | CAPACITY (CFM) | S.P. W.C. | SONES | MOTOR | | LOAD | V/PH/Hz | WEIGHT (LBS) | REMARKS |
| EF-1 | PANASONIC | FV-05-11VKS1 | 103 - INFANT WASHROOM | 110 | 0.25 | 0.8 | 1,205 | 0.27 | 120/160 | - | - | 2.5,13,14,31 |
| EF-2 | PANASONIC | FV-05-11VKS1 | 114 - STAFF WASHROOM | 110 | 0.25 | 0.8 | 1,205 | 0.27 | 120/160 | - | - | 2.5,13,14,31 |
| EF-3 | PANASONIC | FV-05-11VKS1 | 105 - ACCESSIBLE WASHROOM | 110 | 0.25 | 0.8 | 1,205 | 0.27 | 120/160 | - | - | 2.5,13,14,31 |
| EF-4 | PANASONIC | FV-05-11VKS1 | 111 - ELECTRICAL ROOM | 50 | 0.25 | 0.3 | 1,072 | 0.27 | 120/160 | - | - | 1.4,5,13,14,31 |
| EF-5 | PANASONIC | FV-05-11VKS1 | 106 - JANITOR | 50 | 0.25 | 0.3 | 1,072 | 0.27 | 120/160 | - | - | 1.4,5,13,14,31 |
| RH-1 | BROAN | BU330WW | KITCHEN RANGE HOOD | 190 | | 7.0 | | 1.9 A | 120/160 | - | - | 3.5,10,11,16 |
| REMARKS: 1. WIRE TO WALL SWITCH 2. 20/45/60 MINUTE TIMER WALL SWITCH 3. OCCUPANCY SENSOR/LIGHT SWITCH 4. WIRE TO REV. ACTING THERMOSTAT 5. BACKDRAFT DAMPERS 6. ACOUSTIC LINED CABINETS 7. EXPLOSION PROOF MOTOR 8. HIGH EFFICIENCY MOTOR 9. EPOXY COATED WHEEL AND B.O.D. 10. FACTORY LIGHT 11. 7" ROUND CONNECTION 12. NFPA-96 FOOD SERVICE INSTALLATION 13. POLYPROPYLENE CONSTRUCTION 14. DISCONNECT SWITCH 15. WIRE TO TIMECLOCK CONTROL 16. FACTORY WALL CAP 17. CO / GAS DETECTOR CONTROL 18. LINT TRAP 19. HEAT SENSOR CONTROL 20. FANTECH 7" LD DUCT SILENCER 21. SOLID STATE SPEED CONTROL 22. MOTOR GUARD 23. FAN TO RUN CONTINUOUSLY AT LOW SPEED 24. CONTINUOUS OPERATION 25. UPBLAST DISCHARGE 26. C/W WEATHERHOOD 27. C/W ACCESS DOOR 28. C/W 1" DRAIN CONNECTION 29. INTERLOCK W/ MOTORIZED DAMPER 30. INTERLOCK W/ KITCHEN MAKE-UP AIR UNIT 31. NO ALTERNATE ACCEPTED 32. DDC CONTROL | | | | | | | | | | | | |

| | | | |
|------------|------------|------------------------------|----|
| 4 | 2022-06-24 | ISSUED FOR TENDER | MW |
| 3 | 2022-06-17 | ISSUED FOR BP / TENDER | MW |
| 2 | 2021-07-19 | ISSUED FOR ELEC COORDINATION | MW |
| 1 | 2021-07-16 | ISSUED FOR REVIEW | MW |
| No. | DATE | DESCRIPTION | BY |
| REVISIONS: | | | |