

PROJECT TREES



STRATHMORE CRABAPPLE



SUTHERLAND CARAGANA
(Small Tree / Large Shrub)

PROPOSED SITE FURNITURE



DERO 'HOOP' BIKE RACK



DERO 'ROLLING' BIKE RACK



BANCAL BENCH WITH OPPOSING BACKS
BY LANDSCAPE FORMS

LEGEND

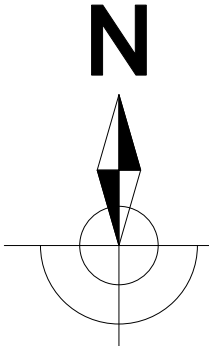
- PROPERTY LINES
- LIMIT OF PHASE 1
- CS BRUSH FINISH CONCRETE WALKWAYS - REFER TO CIVIL ENG DWGS
- 1" - 3" DIA. WASHED ROUND RIVER ROCK 200mm (8") DEPTH, ON FILTER FABRIC, ON COMPACTED, LEVEL BASE.
- LAWN = SOD ON 150 MM MIN DEPTH APPROVED GROWING MEDIUM
- EXISTING LAWN TO REMAIN CONTRACTOR TO REPAIR ANY DAMAGE
- PLANTING BED CW 60 MM DEPTH OF 3/4" DIA. WASHED ROCK MULCH GROUND COVER ON APPROVED FILTER FABRIC ON APPROVED GROWING MEDIUM. 450 MM MIN DEPTH FOR SHRUBS (2 L3) (3 L3) 700 MM MIN FOR TREES
- CIP RETAINING WALL / TIERED PLANTERS. REFER TO ARCH/ STRUCTURAL DWGS
- BE COMPOSITE EDGER. INSTALL FLUSH WITH ADJACENT SURFACE (4 L3)
- BIKE RACKS - ROLLING RACK BY DERO (OR APPROVED EQUIVALENT) VARIOUS SIZES REQUIRED. SECURED TO CONCRETE PAVING ACCOMMODATES 55 BIKES TOTAL (6 L3)
- BENCH WITH OPPOSING BACKS (5 L3)
- FH PROPOSED FIRE HYDRANT SEE CIVIL DRAWINGS
- HOSE BIB CONNECTION.
- TREE PROTECTION ZONE FENCING. APPROXIMATE LOCATION. (1 L1.2)
 - ARBORIST TO REVIEW PROTECTION FENCE LOCATIONS ON SITE PRIOR TO CONSTRUCTION

PLANT LIST

SYMBOL	BOTANICAL NAME	COMMON NAME	COUNT	SIZE
TREES				
CaS	Caragana arborescens 'Sutherland'	Sutherland Caragana	2	4cm Cal.
MS	Malus 'Strathmore'	Strathmore Crabapple	3	6cm Cal.
SHRUBS				
Bc	Berberis thunbergii 'Concorde'	Barberry Concorde	14	#2pot
DV	Cornus Alba 'Aureo-marginata'	Silver-Leaf (Variegated) Dogwood	7	#2pot
JhH	Juniperus horizontalis 'Hughes'	Hughes Juniper	7	#2pot
Pa	Picea abies 'Nidiformis'	Bird's Nest Spruce	22	#2pot
Ppg	Picea pungens 'Glauca Prostrata'	Creeping Blue Spruce	5	#2pot
Ppgg	Picea pungens 'Glauca Globosa'	Dwarf Globe Blue Spruce	3	#5pot
HH	Rosa 'Henry Hudson'	Henry Hudson White Rose	27	#2pot
Sgf	Spiraea x bumalda	Goldflame Spirea	25	#2pot
ORNAMENTAL GRASSES				
Ck	Calamagrostis x acutifolia 'Karl Foerster'	Feather Reed Grass	19	#1pot
DC	Deschampsia cespitosa	Tufted Hairgrass	6	#1pot
M	Molinia caerulea 'Variegata'	Variegated Moor Grass	14	#1pot

GENERAL NOTES

- ALL PLANTS ARE TO CONFORM TO THE STANDARDS SPECIFIED IN THE LATEST EDITION OF THE CANADIAN LANDSCAPE STANDARD. THE CONTRACTOR IS TO FAMILIARIZE THEMSELVES WITH THESE STANDARDS.
- PLANT MATERIAL SIZES SPECIFIED IN THE PLANT LIST ARE THE MINIMUM ACCEPTABLE SIZES FOR MATERIAL SUPPLIED FOR THIS PROJECT. PLANTS WILL BE WELL ESTABLISHED AND UNIFORM IN SHAPE. PLANTS WILL BE NURSERY GROWN UNLESS NOTED OTHERWISE.
- THE CONTRACTOR SHALL PROVIDE A CURRENT (WITHIN 6 MONTHS) GROWING MEDIUM ANALYSIS FOR REVIEW & APPROVAL BY THE LANDSCAPE ARCHITECT, AS PER SPECIFICATIONS PRIOR TO THE START OF CONSTRUCTION. GROWING MEDIUM SUPPLIED TO OR PLACED ON SITE PRIOR TO REVIEW BY THE CONSULTANT WILL BE REJECTED.
- CONTRACTOR TO CONFIRM PLANT QUANTITIES ON DRAWING CORRESPOND TO THOSE INDICATED ON THE PLANT LIST. REPORT ANY DISCREPANCIES TO CONSULTANT FOR REVIEW AND RESPONSE. PRIOR TO THE START OF CONSTRUCTION THE CONTRACTOR IS TO CONFIRM THE AVAILABILITY OF PLANT MATERIAL AS PER SPECIFICATIONS. PLANT SUBSTITUTIONS NOT CONFIRMED WITH THE CONSULTANT WILL BE REJECTED.



1:200 SCALE

Date	Revisions	By
March 31 2023	ISSUE FOR REVIEW	LS
Oct. 29 2024	ISSUE FOR REVIEW	LS/SS
Nov. 20 2024	DRAFT FOR DISCUSSION	LS/SS
Nov. 28 2024	ISSUE FOR DP REVIEW	LS/SS
Dec. 2 2024	ISSUE FOR 95% DD REVIEW	LS/SS
Jan. 8 2025	ISSUE FOR REVIEW	LS/SS
Jan. 13 2025	RE ISSUE FOR REVIEW	SS
Feb. 7 2025	ISSUE FOR 50% CD	SS
MAR 7 2025	ISSUE FOR DP	LS/SS

LAZZARIN SVISDAHL
LANDSCAPE ARCHITECTS
1395 5th Ave Prince George, BC V2L 3L6
250-563-6158 www.lsla-landarch.com

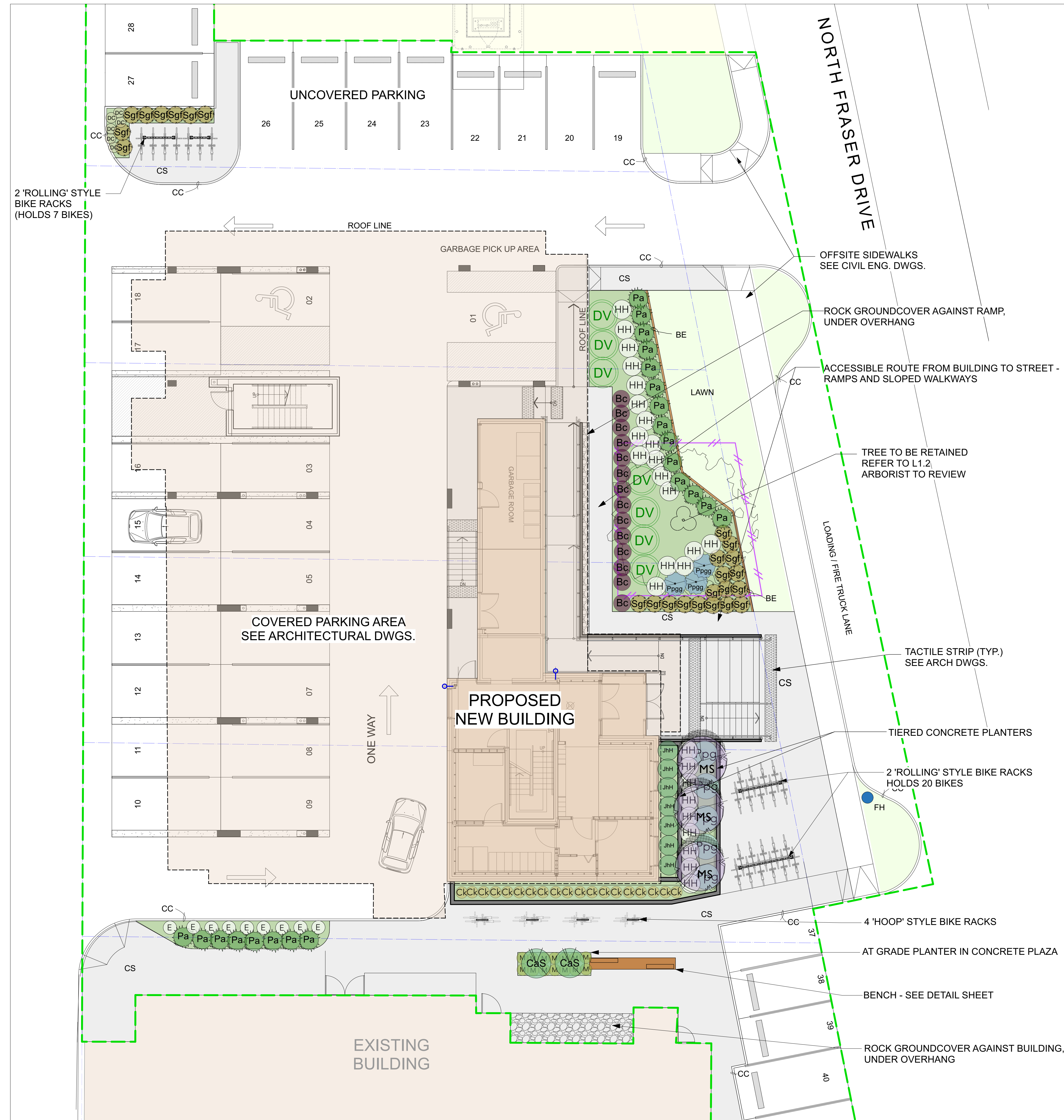
Project
TILlicum AFFORDABLE HOUSING PHASE 1
319 North Fraser Drive
Quesnel, BC

Sheet Title
Landscape Plan

Date March 30, 2023
Scale 1:200 METERS
Drawn By SD/LS
Project No.

Copyright reserved. This drawing and the design are, and at all times remain the exclusive property of Lazzarin Svisdahl Landscape Architects and cannot be used without the Landscape Architect's written consent.

Drawing No.
L 1.0



LEGEND

- PROPERTY LINES
- LIMIT OF PHASE 1
- BRUSH FINISH CONCRETE WALKWAYS - REFER TO CIVIL ENG DWGS
- 1" - 3" DIA. WASHED ROUND RIVER ROCK 200mm (8") DEPTH, ON FILTER FABRIC, ON COMPACTED, LEVEL BASE.
- LAWN = SOD ON 150 MM MIN DEPTH APPROVED GROWING MEDIUM
- EXISTING LAWN TO REMAIN CONTRACTOR TO REPAIR ANY DAMAGE
- PLANTING BED CW 60 MM DEPTH OF 3/4" DIA. WASHED ROCK MULCH GROUNDCOVER ON APPROVED FILTER FABRIC ON APPROVED GROWING MEDIUM. 450 MM MIN DEPTH FOR SHRUBS 700 MM MIN FOR TREES
- CIP RETAINING WALL / TIERED PLANTERS. REFER TO ARCH/ STRUCTURAL DWGS
- COMPOSITE EDGER. INSTALL FLUSH WITH ADJACENT SURFACE
- BIKE RACKS - ROLLING RACK BY DERO (OR APPROVED EQUIVALENT) VARIOUS SIZES REQUIRED. SECURED TO CONCRETE PAVING ACCOMMODATES 55 BIKES TOTAL
- BENCH WITH OPOSING BACKS
- PROPOSED FIRE HYDRANT SEE CIVIL DRAWINGS
- HOSE BIB CONNECTION.
- TREE PROTECTION ZONE FENCING. APPROXIMATE LOCATION. * ARBORIST TO REVIEW PROTECTION FENCE LOCATIONS ON SITE PRIOR TO CONSTRUCTION

PLANT LIST

SYMBOL	BOTANICAL NAME	COMMON NAME	COUNT	SIZE
TREES				
CaS	<i>Caragana arborescens</i> 'Sutherland'	Sutherland Caragana	2	4cm Cal.
MS	<i>Malus</i> 'Strathmore'	Strathmore Crabapple	3	6cm Cal.
SHRUBS				
Bc	<i>Berberis thunbergii</i> 'Concorde'	Barberry Concorde	14	#2pot
DV	<i>Cornus Alba</i> 'Aureo-marginata'	Silver-Leaf (Variegated) Dogwood	7	#2pot
JhH	<i>Juniperus horizontalis</i> 'Hughes'	Hughes Juniper	7	#2pot
Pa	<i>Picea abies</i> 'Nidiformis'	Bird's Nest Spruce	22	#2pot
Ppg	<i>Picea pungens</i> 'Glauca Prostrata'	Creeping Blue Spruce	5	#2pot
Pp	<i>Picea pungens</i> 'Glauca Globosa'	Dwarf Globe Blue Spruce	3	#5pot
HH	<i>Rosa</i> 'Henry Hudson'	Henry Hudson White Rose	27	#2pot
Sgf	<i>Spiraea x bumalda</i>	Goldflame Spiraea	25	#2pot
ORNAMENTAL GRASSES				
Ck	<i>Calamagrostis x acutifolia</i> 'Karl Foerster'	Feather Reed Grass	19	#1pot
DC	<i>Deschampsia cespitosa</i>	Tufted Hairgrass	6	#1pot
M	<i>Molinia caerulea</i> 'Variegata'	Variegated Moor Grass	14	#1pot

Date	Revisions	By
March 31 2023	ISSUE FOR REVIEW	LS
Oct. 29 2024	ISSUE FOR REVIEW	LS/SS
Dec. 2 2024	ISSUE FOR 95% DD REVIEW	LS/SS
Jan. 8 2025	ISSUE FOR REVIEW	LS/SS
Jan. 13 2025	RE ISSUE FOR REVIEW	SS
Feb. 7 2025	ISSUE FOR 50% CD	SS
MAR 7 2025	ISSUE FOR DP	LS/SS

LAZZARIN SVISDAHL
LANDSCAPE ARCHITECTS
1395 5th Ave Prince George, BC V2L 3L6
250-563-6158 www.lsla-landarch.com

Project
TILLICUM AFFORDABLE HOUSING PHASE 1
319 North Fraser Drive
Quesnel, BC

Sheet Title
Landscape Plan Inset

Date
March 30, 2023

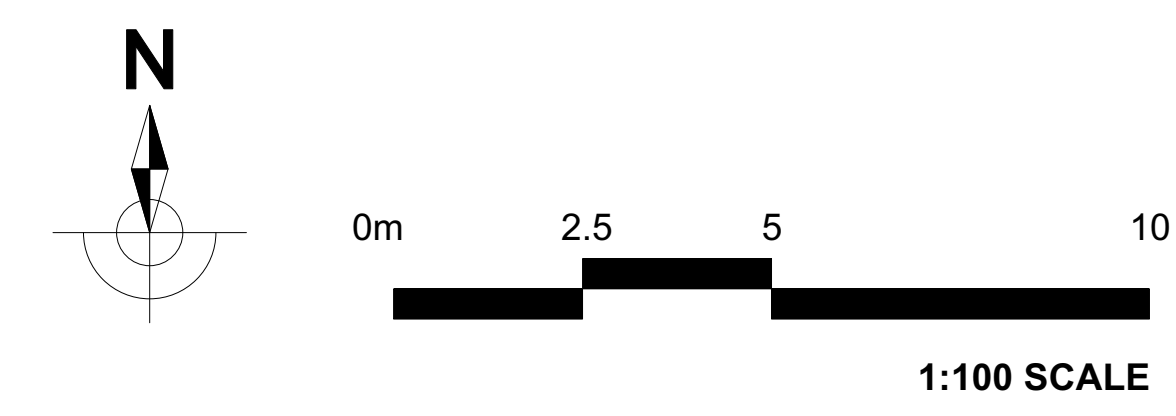
Scale
1:100 METERS

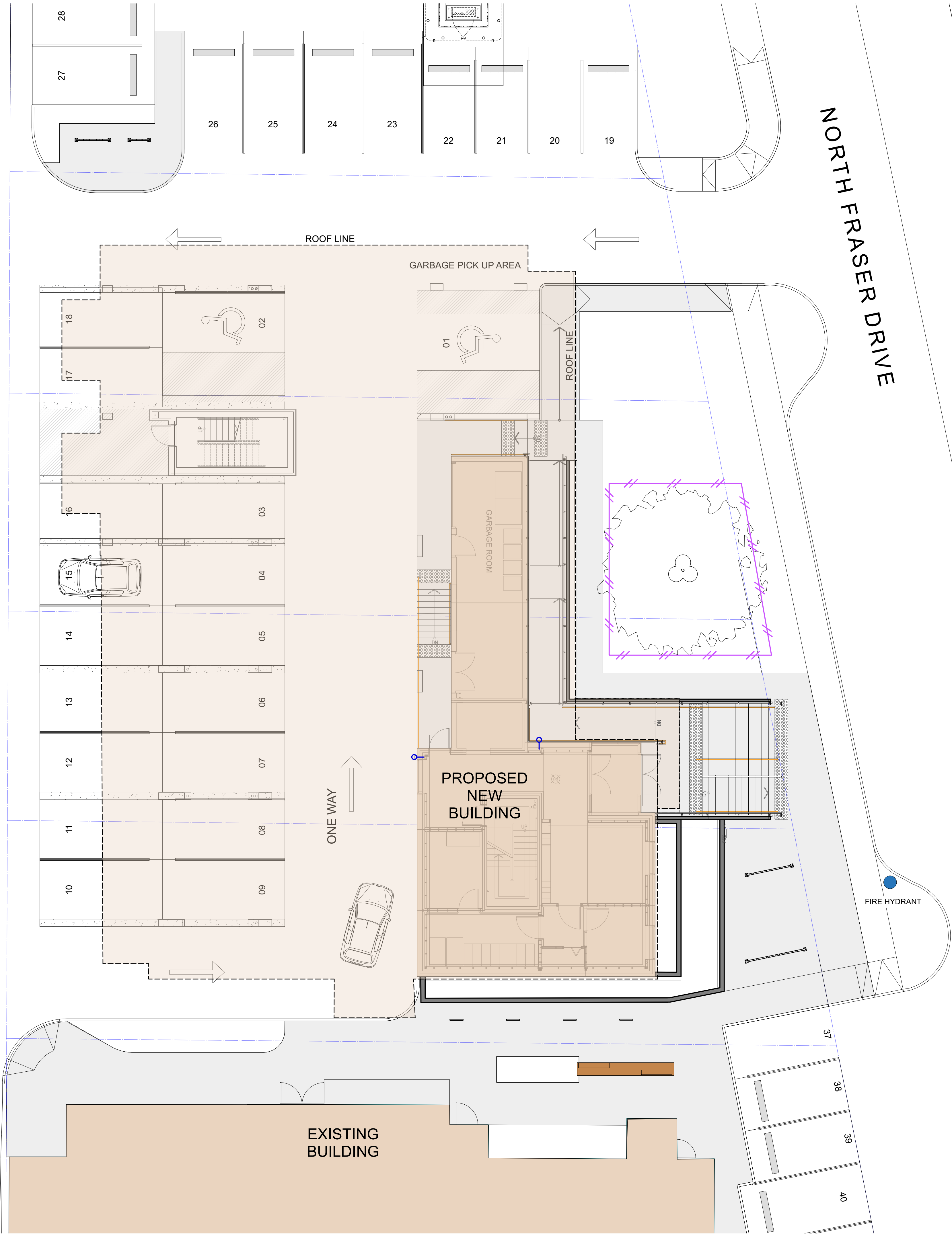
Drawn By
SS/LS

Project No.


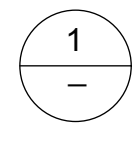
Copyright reserved. This drawing and the design are, and at all times remain the exclusive property of Lazzarin Svidahl Landscape Architects and cannot be used without the Landscape Architect's written consent.

Drawing No.
L 1.1





LEGEND

 TREE PROTECTION ZONE FENCING. APPROXIMATE LOCATION.
 ARBORIST TO REVIEW PROTECTION FENCE LOCATIONS ON SITE PRIOR TO CONSTRUCTION

Date	Revisions	By
Dec. 2 2024	ISSUE FOR 95% DD REVIEW	LS/SS
Jan. 9 2025	ISSUE FOR REVIEW	LS/SS
Jan. 13 2025	RE ISSUE FOR REVIEW	SS
Feb. 7 2025	ISSUE FOR 50% CD	SS
MAR 7 2025	ISSUE FOR DP	LS/SS



 1395 5th Ave Prince George, BC V2L 3L6
 250-563-6158 www.lsla-landarch.com

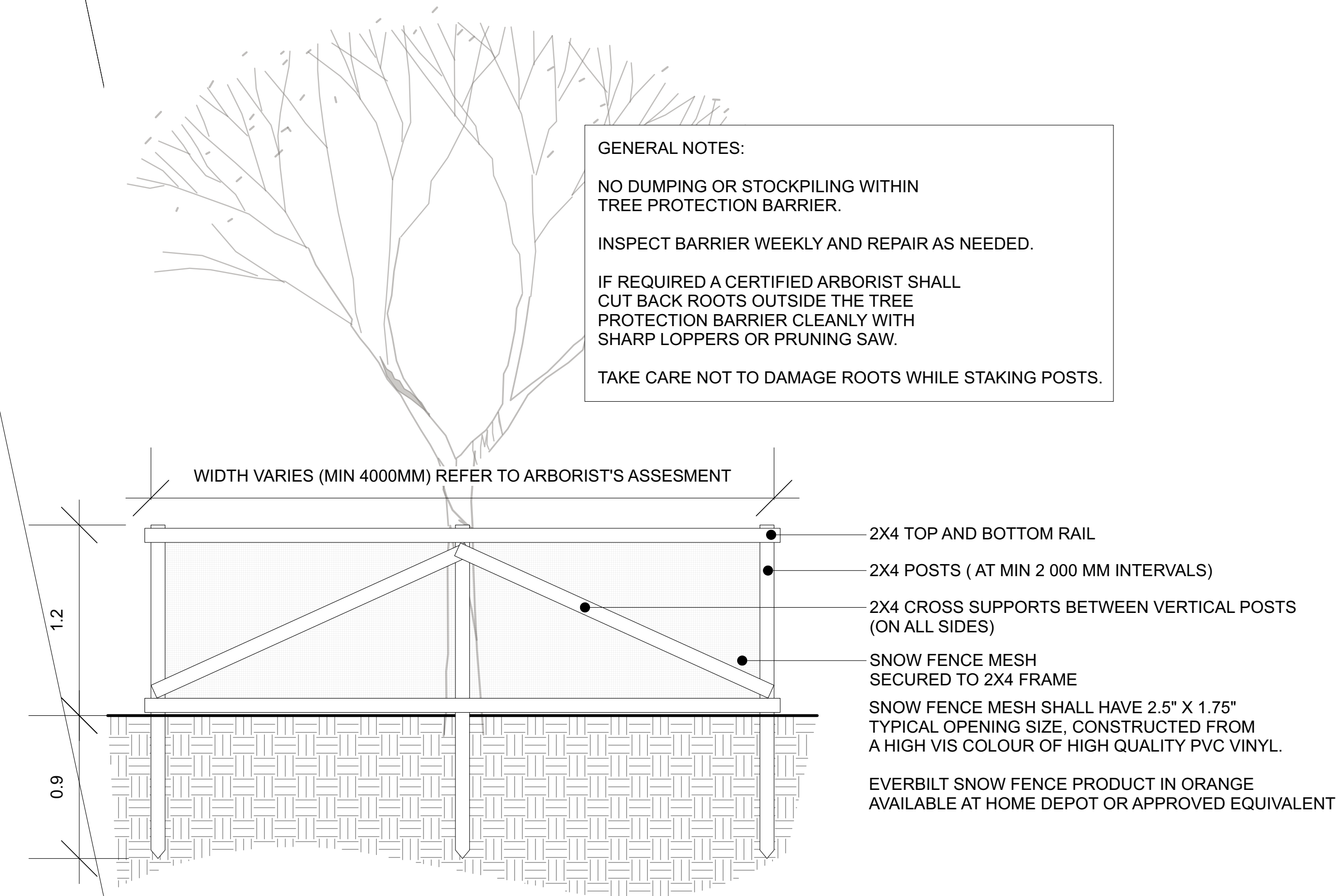
Project
TILLICUM AFFORDABLE HOUSING PHASE 1
 319 North Fraser Drive
 Quesnel, BC

Sheet Title
Landscape Plan Inset

Date March 30, 2023
 Scale 1:100 METERS
 Drawn By SS/LS
 Project No.

Copyright reserved. This drawing and the design are, and at all times remain the exclusive property of Lazzarin Svisdahh Landscape Architects and cannot be used without the Landscape Architect's written consent.

Drawing No.
L 1.2



GENERAL NOTES:

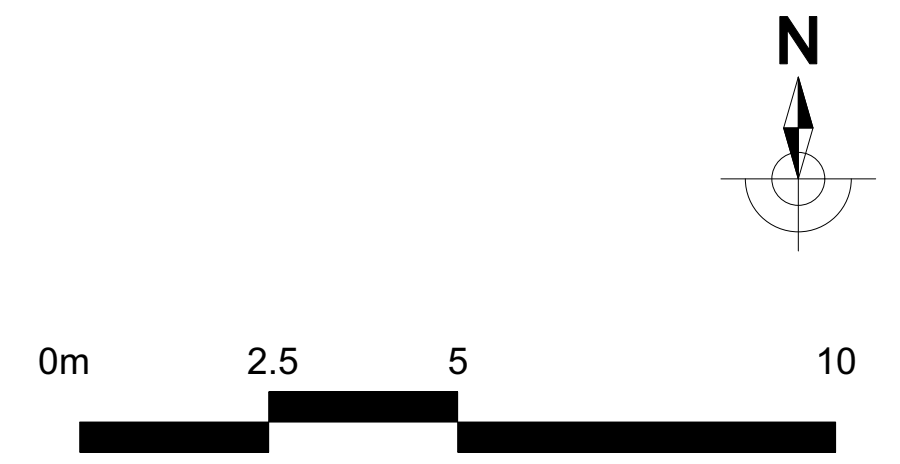
NO DUMPING OR STOCKPILING WITHIN TREE PROTECTION BARRIER.

INSPECT BARRIER WEEKLY AND REPAIR AS NEEDED.

IF REQUIRED A CERTIFIED ARBORIST SHALL CUT BACK ROOTS OUTSIDE THE TREE PROTECTION BARRIER CLEANLY WITH SHARP LOPPERS OR PRUNING SAW.

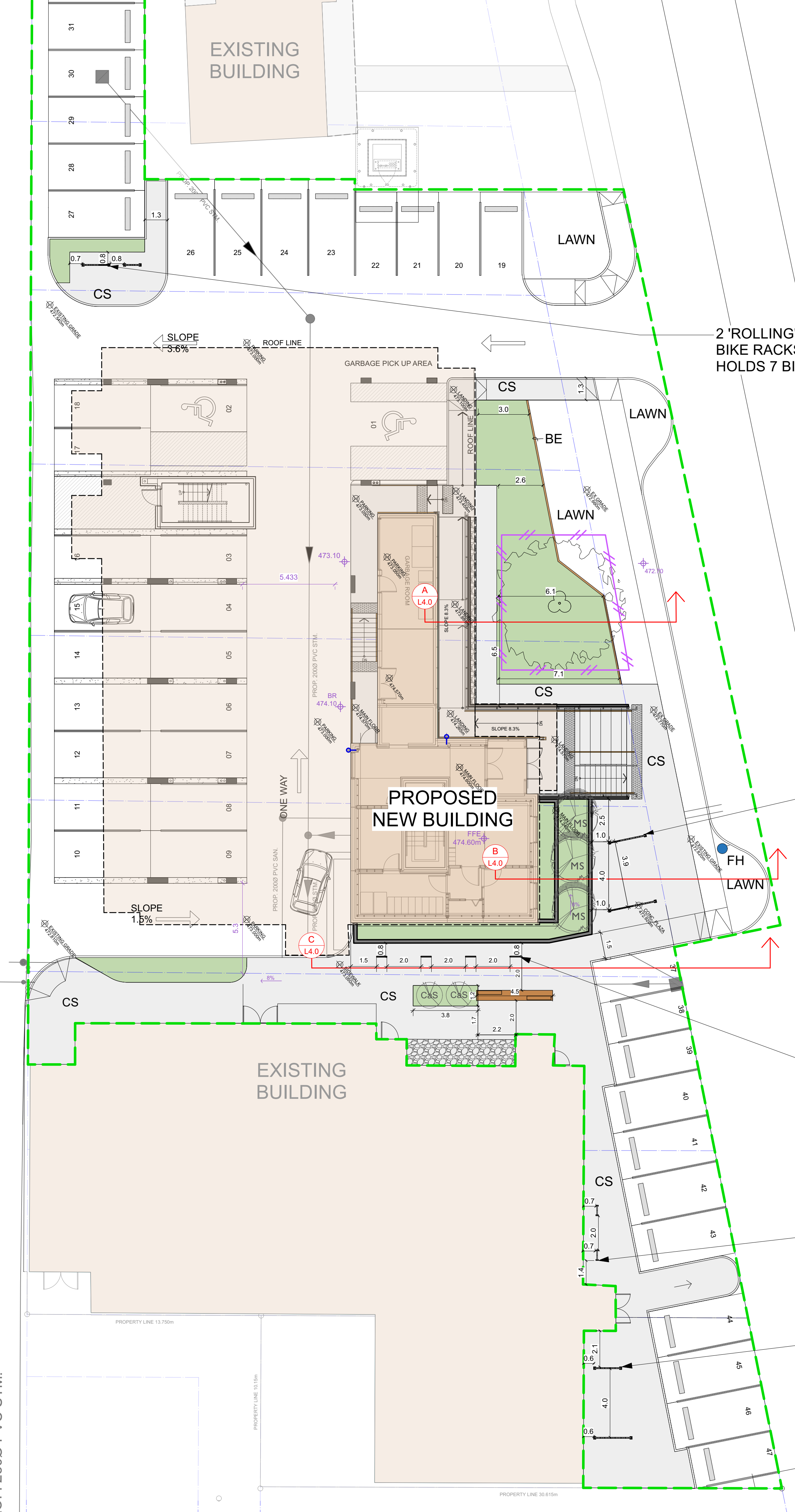
TAKE CARE NOT TO DAMAGE ROOTS WHILE STAKING POSTS.

1 TREE PROTECTION HOARDING DETAIL NTS



NOTES

ALL WORK AND MATERIALS SHALL BE TO CANADIAN LANDSCAPE STANDARDS AND PROJECT SPECIFICATIONS. IF THERE IS A CONFLICT/DIFFERENCE PROJECT SPECIFICATIONS SHALL TAKE PREFERENCE. REPORT ANY DISCREPANCIES TO THE LANDSCAPE ARCHITECT IMMEDIATELY.



2 'ROLLING' STYLE BIKE RACKS
HOLDS 7 BIKES

2 'ROLLING' STYLE BIKE RACKS
HOLDS 20 BIKES

4 'HOOP' STYLE BIKE RACKS
HOLDS 8 BIKES

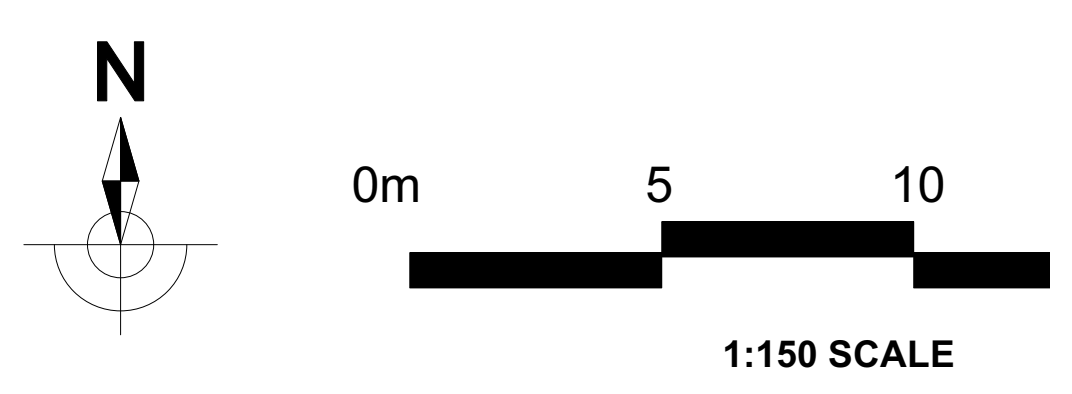
2 'HOOP' STYLE BIKE RACKS
HOLDS 4 BIKES

2 'ROLLING' STYLE BIKE RACKS
HOLDS 16 BIKES

LEGEND

- PROPERTY LINES
- CS BRUSH FINISH CONCRETE WALKWAYS - REFER TO CIVIL ENG DWGS
- 1" - 3" DIA. WASHED ROUND RIVER ROCK 200mm (8") DEPTH, ON FILTER FABRIC, ON COMPACTED, LEVEL BASE.
- LAWN = SOD ON 150 MM MIN DEPTH APPROVED GROWING MEDIUM
- EXISTING LAWN TO REMAIN CONTRACTOR TO REPAIR ANY DAMAGE
- PLANTING BED CW 60 MM DEPTH OF 3/4" DIA. WASHED ROCK MULCH GROUND COVER ON APPROVED FILTER FABRIC ON APPROVED GROWING MEDIUM. 450 MM MIN DEPTH FOR SHRUBS (2 L3) 3 L3 700 MM MIN FOR TREES
- CIP RETAINING WALL / TIERED PLANTERS. REFER TO ARCH/ STRUCTURAL DWGS
- COMPOSITE EDGER. INSTALL FLUSH WITH ADJACENT SURFACE (4 L3)
- BIKE RACKS - ROLLING RACK BY DERO (OR APPROVED EQUIVALENT) VARIOUS SIZES REQUIRED. SECURED TO CONCRETE PAVING ACCOMMODATES 55 BIKES TOTAL (6 L3)
- BENCH WITH OPOSING BACKS (5 L3)
- FH PROPOSED FIRE HYDRANT SEE CIVIL DRAWINGS
- HOSE BIB CONNECTION.
- TREE PROTECTION ZONE FENCING. APPROXIMATE LOCATION. * ARBORIST TO REVIEW PROTECTION FENCE LOCATIONS ON SITE PRIOR TO CONSTRUCTION (1 L1.2)

- #### GENERAL NOTES
1. ALL PLANTS ARE TO CONFORM TO THE STANDARDS SPECIFIED IN THE LATEST EDITION OF THE CANADIAN LANDSCAPE STANDARD. THE CONTRACTOR IS TO FAMILIARIZE THEMSELVES WITH THESE STANDARDS.
 2. PLANT MATERIAL SIZES SPECIFIED IN THE PLANT LIST ARE THE MINIMUM ACCEPTABLE SIZES FOR MATERIAL SUPPLIED FOR THIS PROJECT. PLANTS WILL BE WELL ESTABLISHED AND UNIFORM IN SHAPE. PLANTS WILL BE NURSERY GROWN UNLESS NOTED OTHERWISE.
 3. THE CONTRACTOR SHALL PROVIDE A CURRENT (WITHIN 6 MONTHS) GROWING MEDIUM ANALYSIS FOR REVIEW & APPROVAL BY THE LANDSCAPE ARCHITECT, AS PER SPECIFICATIONS PRIOR TO THE START OF CONSTRUCTION. GROWING MEDIUM SUPPLIED TO OR PLACED ON SITE PRIOR TO REVIEW BY THE CONSULTANT WILL BE REJECTED.
 4. CONTRACTOR TO CONFIRM PLANT QUANTITIES ON DRAWING CORRESPOND TO THOSE INDICATED ON THE PLANT LIST. REPORT ANY DISCREPANCIES TO CONSULTANT FOR REVIEW AND RESPONSE. PRIOR TO THE START OF CONSTRUCTION THE CONTRACTOR IS TO CONFIRM THE AVAILABILITY OF PLANT MATERIAL AS PER SPECIFICATIONS. PLANT SUBSTITUTIONS NOT CONFIRMED WITH THE CONSULTANT WILL BE REJECTED.



Date	Revisions	By
March 31 2023	ISSUE FOR REVIEW	LS
Jan. 8 2025	ISSUE FOR REVIEW	LS/SS
Jan. 13 2025	RE ISSUE FOR REVIEW	SS
Feb. 7 2025	ISSUE FOR 50% CD	SS
MAR 7 2025	ISSUE FOR DP	LS/SS
MAR 7 2025	ISSUE FOR DP	LS/SS

LAZZARIN SVISDAHL
LANDSCAPE ARCHITECTS

1395 5th Ave Prince George, BC V2L 3L6
250-563-6158 www.lsla-landarch.com

Project
TILlicUM AFFORDABLE HOUSING PHASE 1
319 North Fraser Drive
Quesnel, BC

Sheet Title
Grading & Layout Plan

Date
March 30, 2023

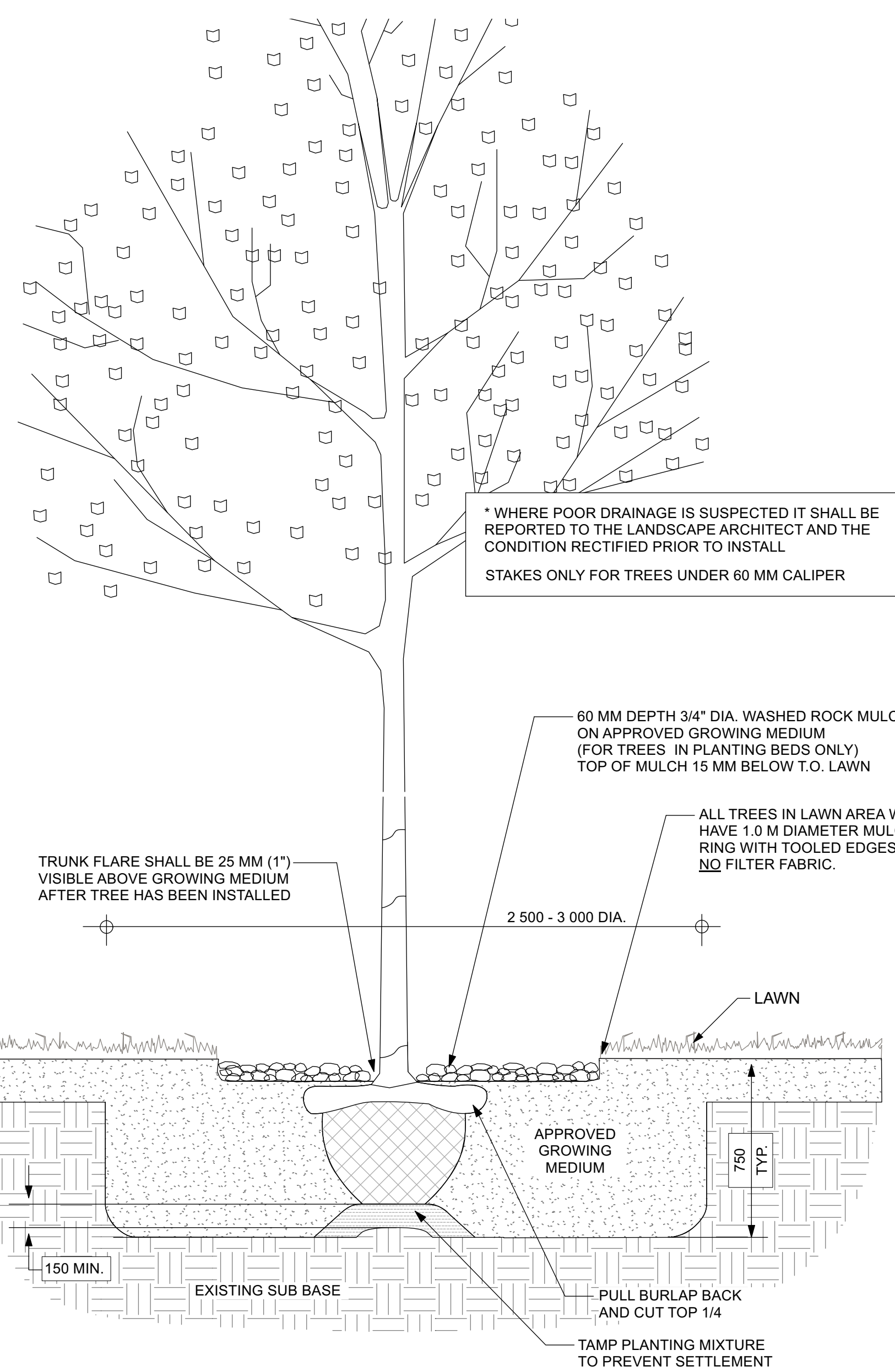
Scale
1:150 METERS

Drawn By
SD/LS

Project No.

Copyright reserved. This drawing and the design are, and at all times remain the exclusive property of Lazzarin Svisdahl Landscape Architects and cannot be used without the Landscape Architect's written consent.

Drawing No.
L 2.0

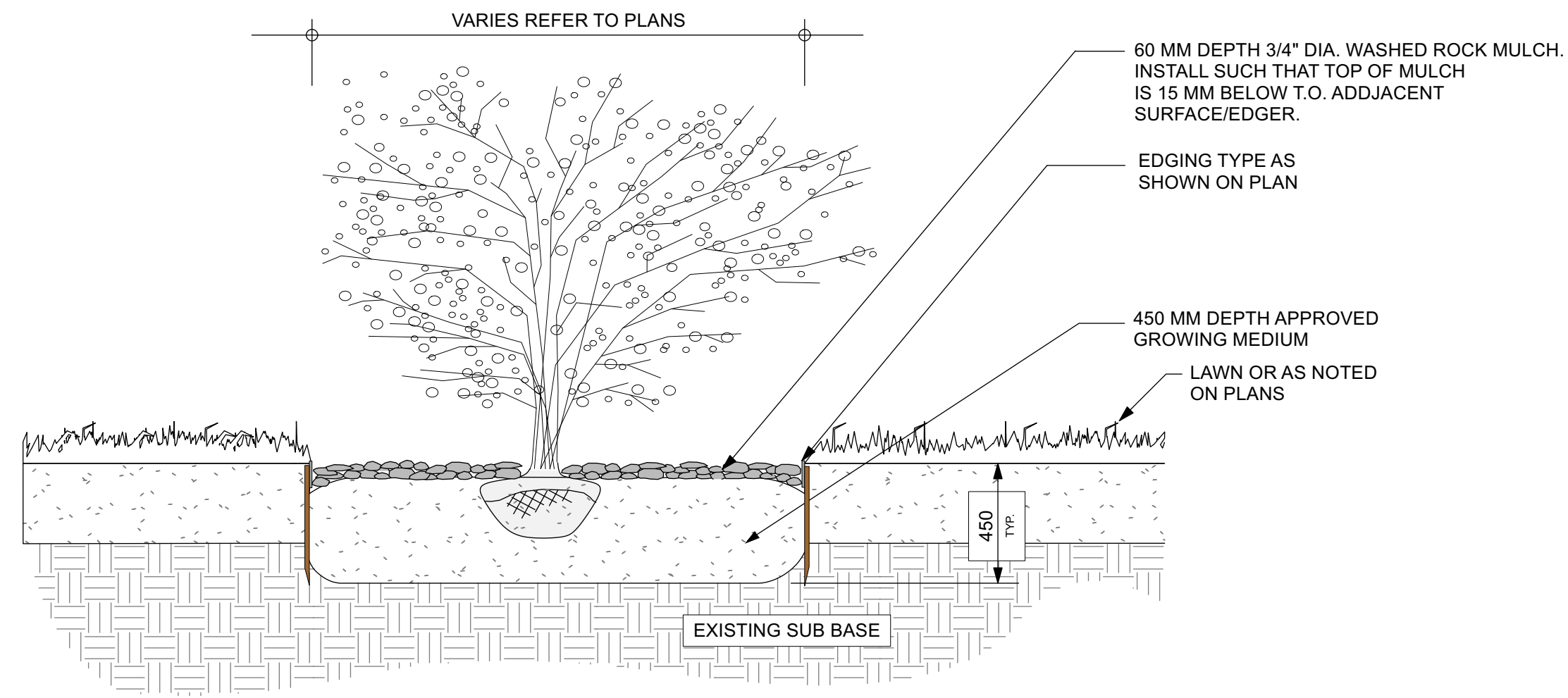


2 TYPICAL TREE PLANTING DETAIL SCALE 1:20

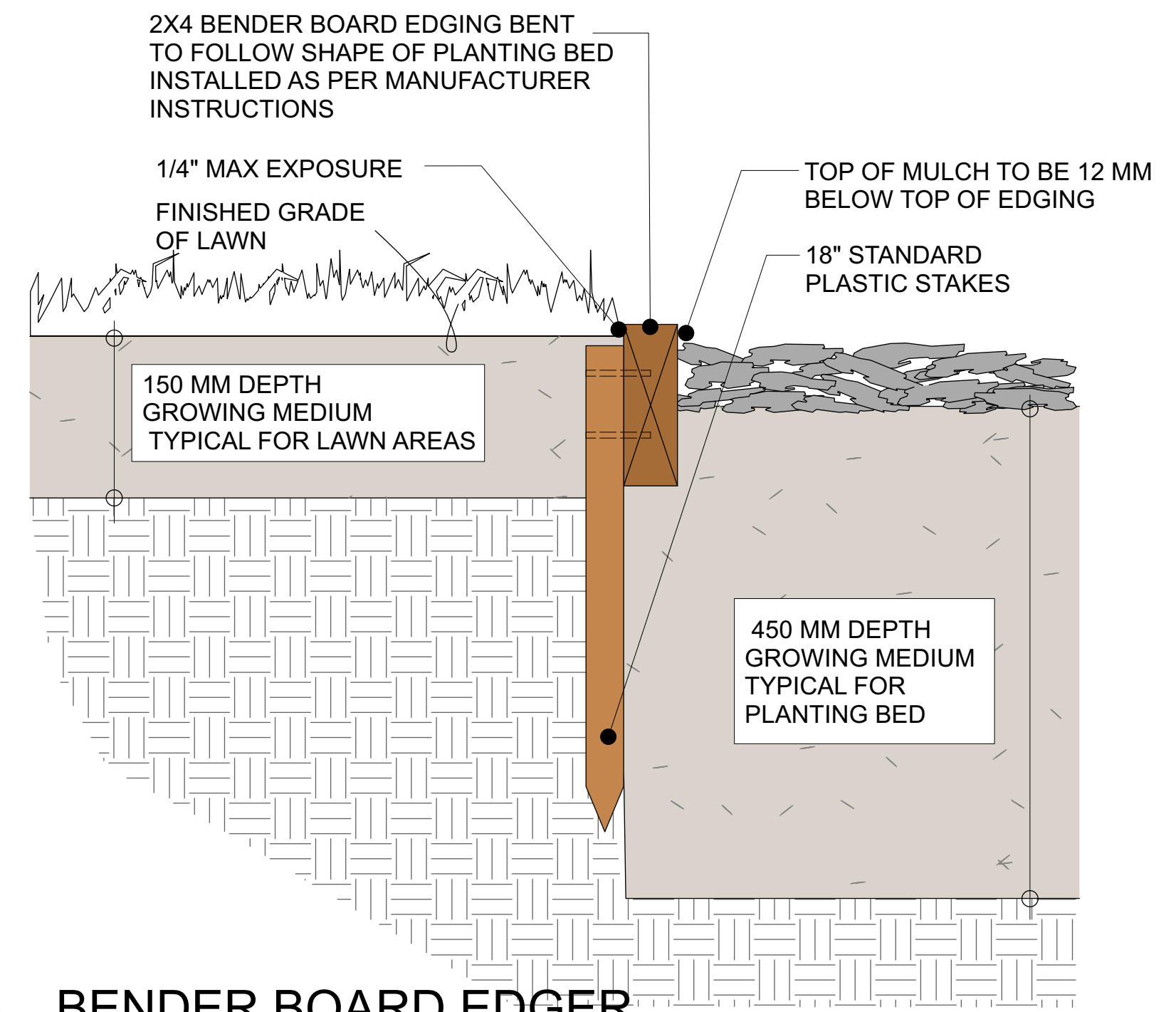


Bancal Bench
Available from Landscape Forms
Embed in Concrete, according to manufacturer's instructions.
Metal to be powder coated black, wood planks are unfinished.

5 BENCH DETAIL NTS



3 TYPICAL SHRUB PLANTING DETAIL SCALE 1:20

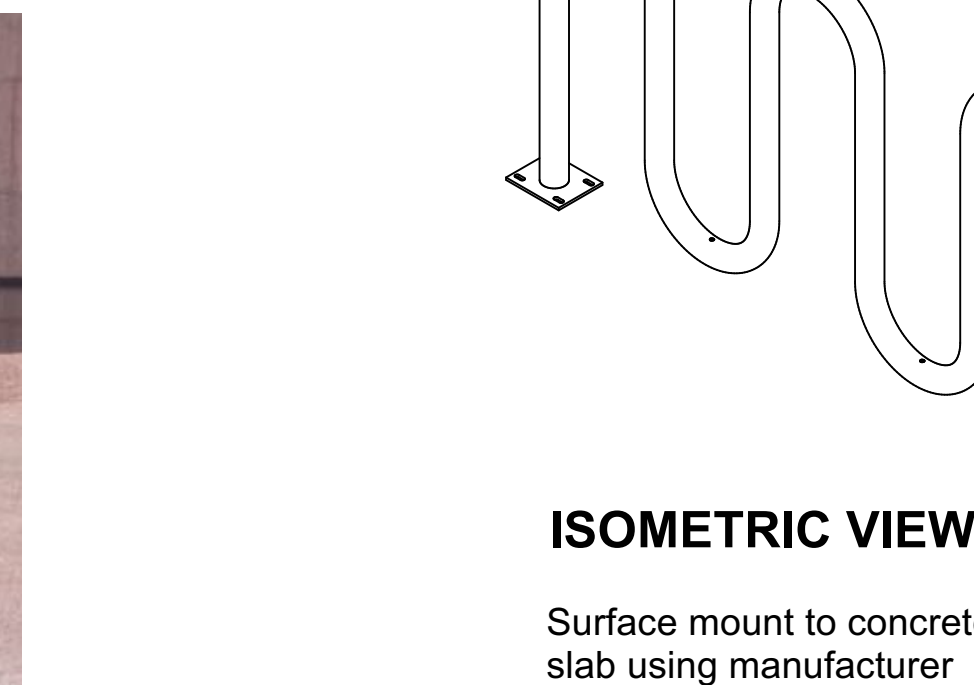


4 BENDER BOARD EDGER DETAIL SCALE 1:5



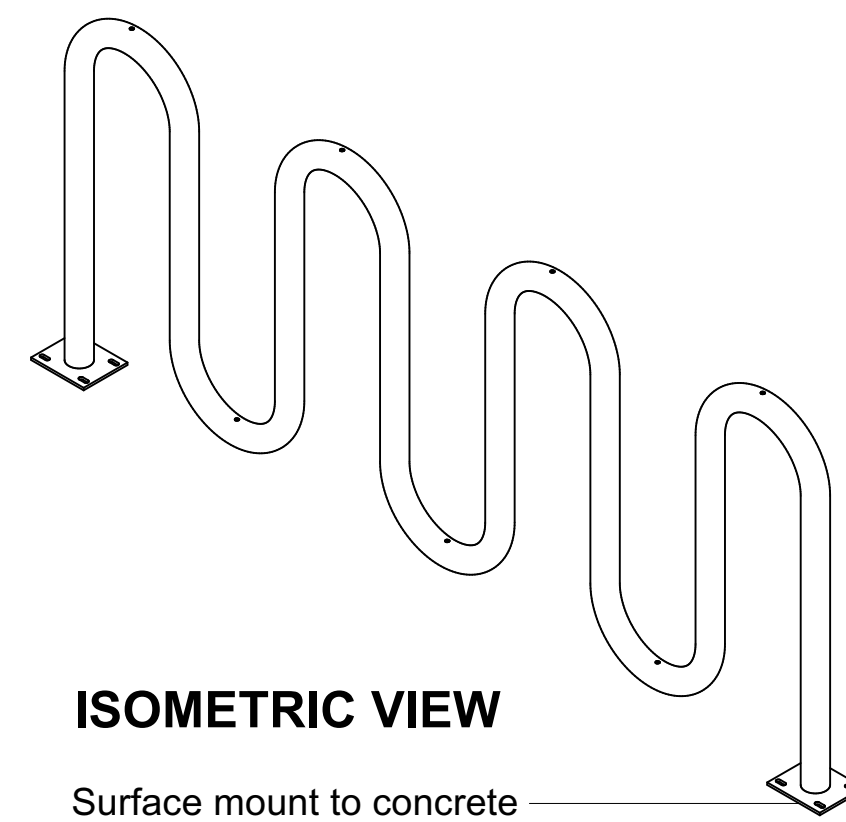
RR2H DERO ROLLING RACK
Capacity 5 Bikes, 38" width.
Available from Dero Canada
Finish color T.B.D.
or approved equivalent

RR4H DERO ROLLING RACK
Capacity 9 Bikes, 87" width.
Available from Dero Canada
Finish color T.B.D.
or approved equivalent

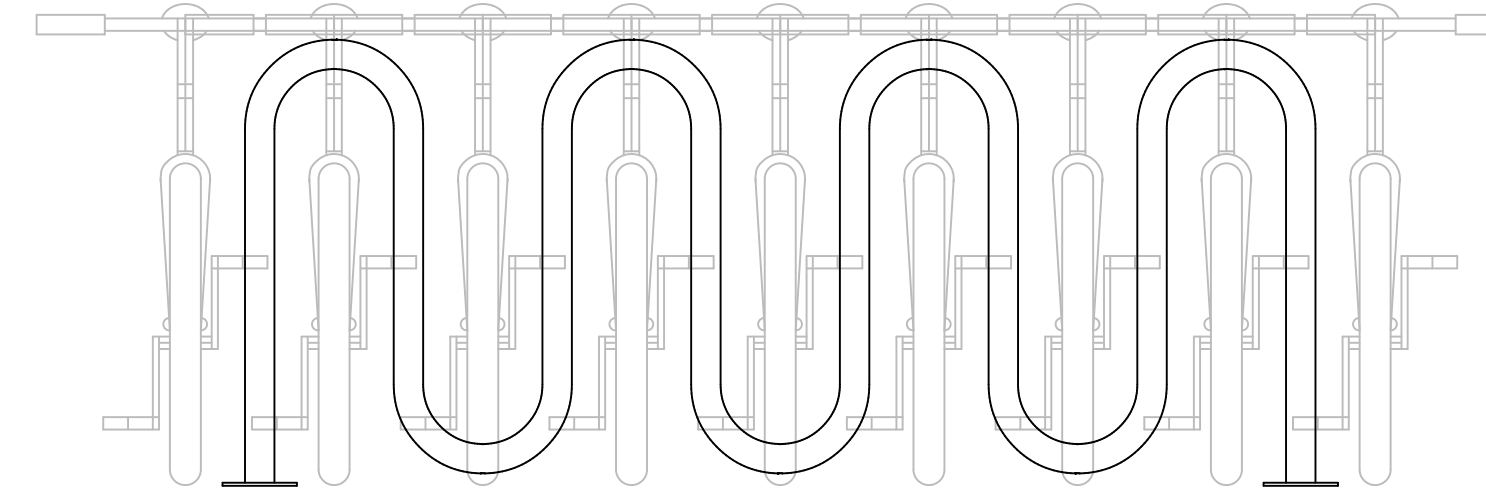


RR3H DERO ROLLING RACK
Capacity 7 Bikes, 63" width.
Available from Dero Canada
Finish color T.B.D.
or approved equivalent

RR5H DERO ROLLING RACK
Capacity 11 Bikes, 111" width.
Available from Dero Canada
Finish color T.B.D.
or approved equivalent



HOOP RACK
Capacity 2 bikes
Available from Dero Canada
Finish Color T.B.D.
or approved equivalent



ALL BIKE RACKS TO BE SURFACE MOUNTED WITH MANUFACTURER SUPPLIED HARDWARE

6 BIKE RACKS DETAIL

NTS

Date	Revisions	By
Oct. 29 2024	ISSUE FOR REVIEW	LS/SS
Dec. 2 2024	ISSUE FOR 95% DD REVIEW	LS/SS
Jan. 8 2025	ISSUE FOR REVIEW	LS/SS
Jan. 13 2025	RE ISSUE FOR REVIEW	SS
Feb. 7 2025	ISSUE FOR 50% CD	SS
MAR 7 2025	ISSUE FOR DP	LS/SS

LAZZARIN SVISDAHL
LANDSCAPE ARCHITECTS

1395 5th Ave Prince George, BC V2L 3L6
250-563-6158 www.lsla-landarch.com

Project
TILlicum AFFORDABLE HOUSING PHASE 1
319 North Fraser Drive
Quesnel, BC

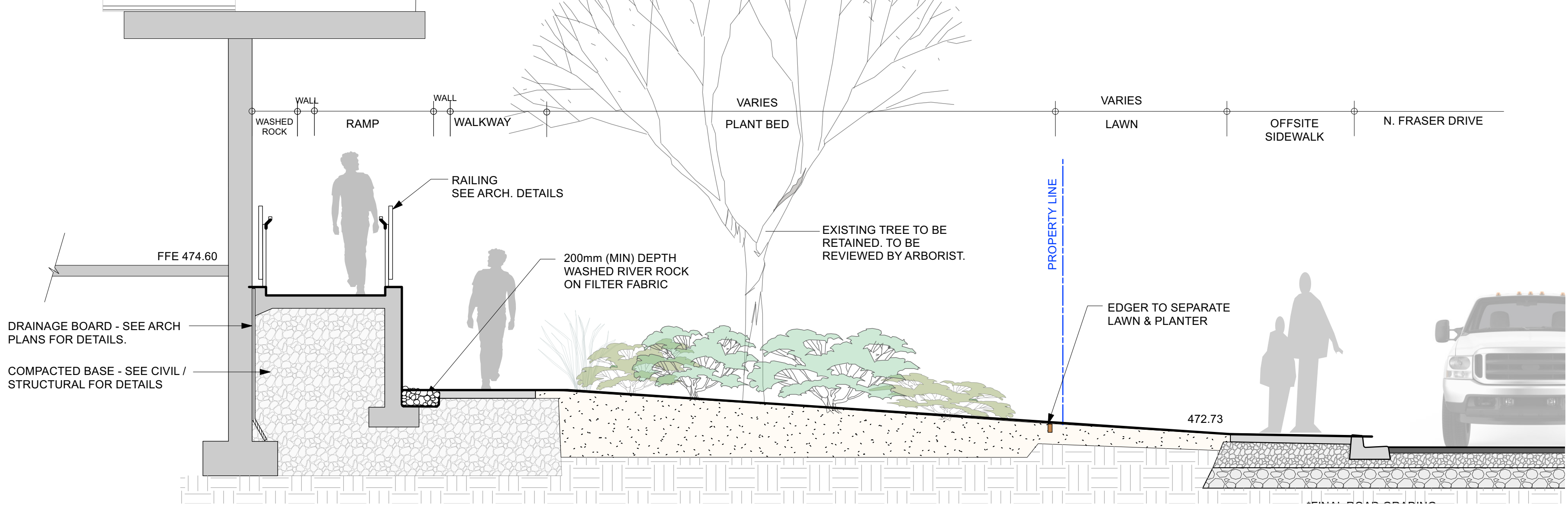
Sheet Title
Landscape Details

Date April 12, 2023
Scale AS SHOWN
Drawn By SD/LS
Project No.

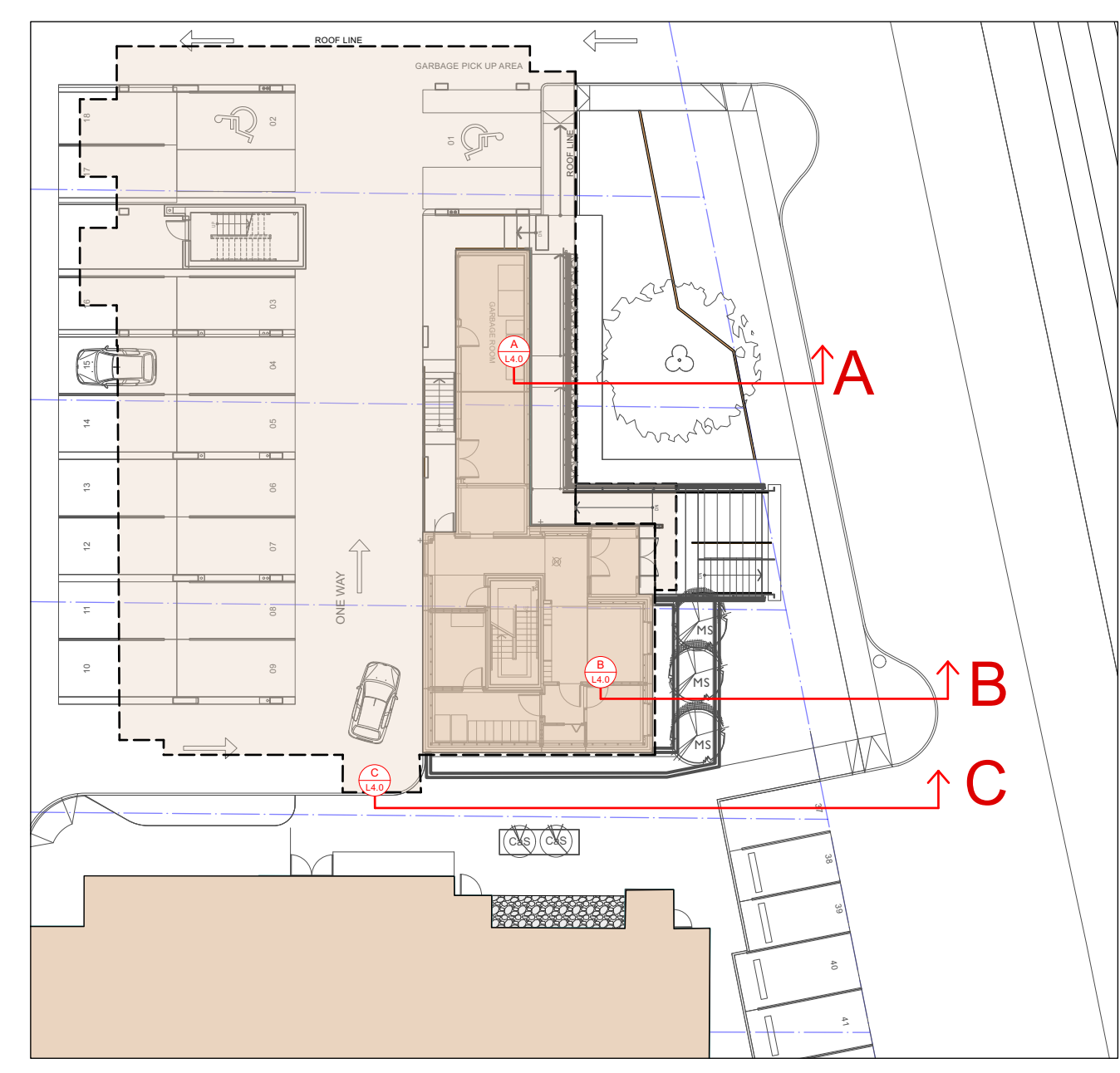
Copyright reserved. This drawing and the design are, and at all times remain the exclusive property of Lazzarin Svisdahli Landscape Architects and cannot be used without the Landscape Architect's written consent.

Drawing No.

L 3.0



A EAST WALKWAYS, RAMPS & RETAINED PLANTER BEDS
SECTION A 1:40



CONTEXT MAP

Date	Revisions	By
Oct. 29 2024	ISSUE FOR REVIEW	LS/SS
Dec. 2 2024	ISSUE FOR 95% DD REVIEW	LS/SS
Jan. 8 2025	ISSUE FOR REVIEW	LS/SS
Jan. 13 2025	RE ISSUE FOR REVIEW	SS
Feb. 7 2025	ISSUE FOR 50% CD	SS
MAR 7 2025	ISSUE FOR DP	LS/SS

LAZZARIN SVISDAHL
LANDSCAPE ARCHITECTS

1395 5th Ave Prince George, BC V2L 3L6
250-563-6158 www.lsla-landarch.com

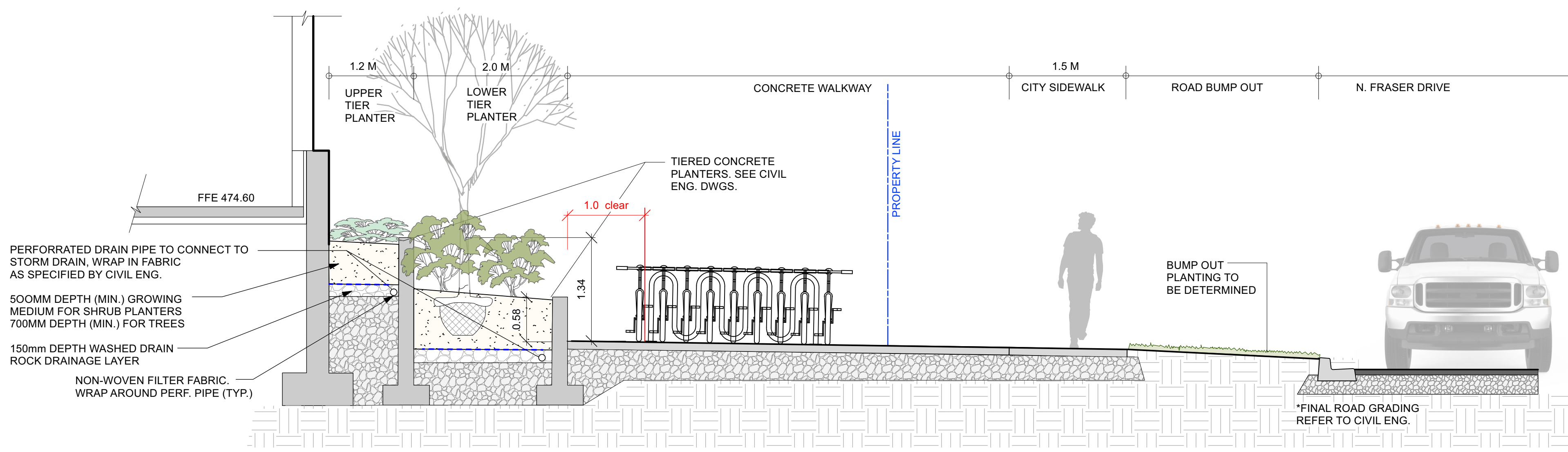
Project
TILlicum AFFORDABLE HOUSING PHASE 1
319 North Fraser Drive
Quesnel, BC

Sheet Title
Landscape Sections

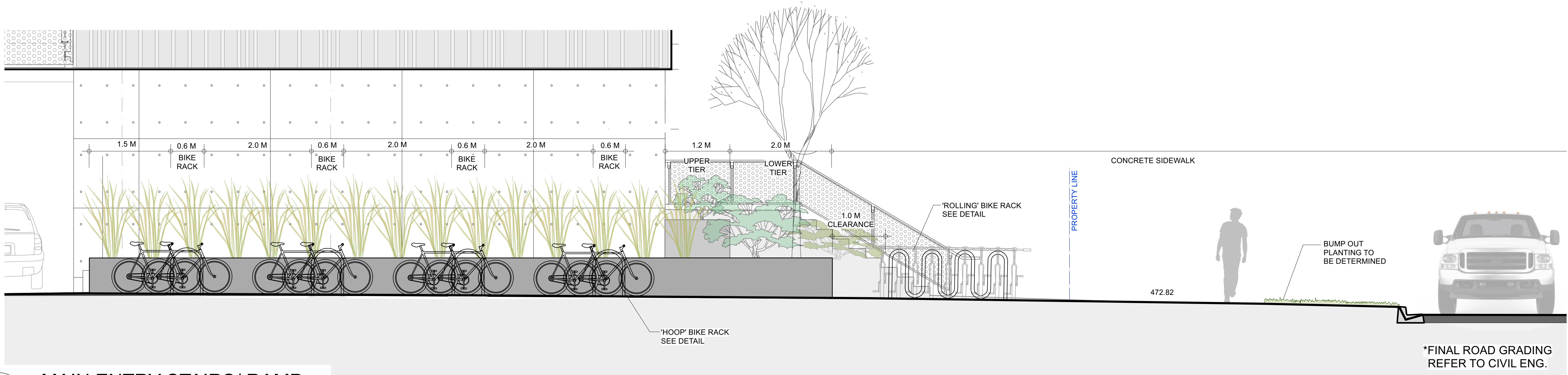
Date April 12, 2023
Scale 1:100 METERS
Drawn By SD/LS
Project No.

Copyright reserved. This drawing and the design are, and at all times remain the exclusive property of Lazzarin Svisdahl Landscape Architects and cannot be used without the Landscape Architect's written consent.

Drawing No.
L 4.0



B TIERED PLANTING BEDS/WALLS, FRONT ENTRY PLAZA
SECTION B 1:40



C MAIN ENTRY STAIRS/ RAMP
SECTION C 1:40

POWER SYMBOL SCHEDULE				
SYMBOL			DESCRIPTION	NOTES
WALL	ABOVE COUNTER	FLOOR		
			15 AMP 125 VOLT DUPLEX RECEPTACLE	
			15 AMP 125 VOLT GROUND FAULT CIRCUIT INTERRUPTER (GFI) DUPLEX RECEPTACLE	
			15 AMP 125 VOLT ISOLATED GROUND DUPLEX RECEPTACLE	
			15 AMP 125 VOLT SPLIT DUPLEX RECEPTACLE	
			15 AMP 125 VOLT SWITCHED DUPLEX RECEPTACLE	
			15 AMP 125 VOLT QUAD RECEPTACLE	
			15 AMP 125 VOLT GROUND FAULT CIRCUIT INTERRUPTER (GFI) QUAD RECEPTACLE	
			RANGE RECEPTACLE / WELDER OUTLET	
			15/20 AMP 125 VOLT RECEPTACLE	
			15/20 AMP 125 VOLT GROUND FAULT CIRCUIT INTERRUPTER (GFI) RECEPTACLE	
			20 AMP 125 VOLT T-SLOT DUPLEX RECEPTACLE	
			20 AMP 125 VOLT GROUND FAULT CIRCUIT INTERRUPTER (GFI) T-SLOT DUPLEX RECEPTACLE	
			EQUIPMENT CONNECTION AS NOTED ON PLAN	
			SPECIAL RECEPTACLE AS NOTED ON PLAN	
			SERVICE POLE (DATA / POWER)	
			MAGNETIC MOTOR STARTER	
			MOTOR DISCONNECT SWITCH	
			FUSED DISCONNECT	
			MANUAL MOTOR STARTER	
			JUNCTION BOX	
			GROUND CONNECTION	
			GROUND ROD	
			THERMOSTAT	
			SURFACE MOUNTED PANEL BOARD	
			RECESSED PANEL BOARD	
			SURFACE RELAY PANEL	
			RECESSED RELAY PANEL	
			SURFACE MOUNTED MEDIA BOX	
			RECESSED MEDIA BOX	
			EQUIPMENT TAG, REFER TO EQUIPMENT SCHEDULE (# DENOTES UNIT IDENTIFICATION)	
			KEYED NOTE TAG, REFER TO KEYED NOTES (# DENOTES KEYED NOTE NUMBER)	
			MOTOR CONNECTION (EF-1 DENOTES MOTOR IDENTIFICATION) (CCT DENOTES CIRCUIT)	
			GROUND REFERENCE BUSBAR	
			WALL CLOCK	
			CEILING CLOCK	
			LOCAL INTERCOM MASTER STATION	
			LOCAL INTERCOM EMERGENCY CALL STATION	
			LOCAL INTERCOM DOOR STATION (IN-SUITE)	
			FLOOR BOX OUTLET (OUTLET WILL BE DENOTED BY SYMBOL WITHIN) (G DENOTES GANG QUANTITY)	
			CEILING MOUNTED OUTLET (OUTLET WILL BE DENOTED BY SYMBOL WITHIN) (G DENOTES GANG QUANTITY)	
			CABLE TRAY	
			ELECTRICAL BASE BOARD HEATER (1KW - DENOTES POWER RATING IN KW)	
			WIREFOLD	
			HEAT TRACE	

RL - RELOCATE EXISTING DEVICES
RM - REMOVE EXISTING DEVICES
RR - REMOVE AND REPLACE WITH NEW DEVICE
ER - EXISTING TO REMAIN
WP - WEATHERPROOF ENCLOSURE

LIGHTING SYMBOL SCHEDULE		
SYMBOL	DESCRIPTION	NOTES
A [Symbol] B-7a	SURFACE LUMINAIRE TYPE 'A' ON CIRCUIT B-7 SWITCHED BY LOCAL SWITCH 'a' (TYPICAL CIRCUITING DESIGNATION FOR ALL LIGHTS AND RECEPTACLES)	
A [Symbol] B-7a	RECESSED LUMINAIRE TYPE 'A' ON CIRCUIT B-7 SWITCHED BY LOCAL SWITCH 'a' (TYPICAL CIRCUITING DESIGNATION FOR ALL LIGHTS AND RECEPTACLES)	
A [Symbol] B7a	WALL MOUNTED LUMINAIRE TYPE 'A' ON CIRCUIT B-7 SWITCHED BY LOCAL SWITCH 'a' (TYPICAL CIRCUITING DESIGNATION FOR ALL LIGHTS AND RECEPTACLES)	
A [Symbol]	SURFACE CEILING TYPE INCANDESCENT, COMPACT FLUORESCENT OR H.I.D. LIGHT FIXTURE - ROUND SHAPE (LETTER DENOTES TYPE)	
A [Symbol]	WALL MOUNTED INCANDESCENT, COMPACT FLUORESCENT OR H.I.D. LIGHT FIXTURE - ROUND SHAPE (LETTER DENOTES TYPE)	
A [Symbol]	RECESSED DOWN LIGHT - ROUND SHAPE (LETTER DENOTES TYPE)	
A [Symbol]	SURFACE CEILING TYPE INCANDESCENT, COMPACT FLUORESCENT OR H.I.D. LIGHT FIXTURE - SQUARE SHAPE (LETTER DENOTES TYPE)	
A [Symbol]	WALL MOUNTED INCANDESCENT, COMPACT FLUORESCENT OR H.I.D. LIGHT FIXTURE - SQUARE SHAPE (LETTER DENOTES TYPE)	
A [Symbol]	RECESSED DOWN LIGHT - SQUARE SHAPE (LETTER DENOTES TYPE)	
A [Symbol] A [Symbol]	FLUORESCENT, INCANDESCENT, COMPACT FLUORESCENT OR H.I.D. LIGHT FIXTURE CONNECTED TO 24 HRS. 'ON' CIRCUIT OR ON EMERGENCY POWER (LETTER DENOTES FIXTURE TYPE)	
A [Symbol]	STRIP LIGHTING (LETTER DENOTES TYPE)	
A [Symbol]	TRACK LIGHTING (TRIANGLE INDICATES HEAD) (LETTER DENOTES TYPE)	
A [Symbol] A	DOUBLE LUMINAIRE EXTERIOR LAMP STANDARD (LETTER DENOTES TYPE)	
A [Symbol]	SINGLE LUMINAIRE EXTERIOR LAMP STANDARD (LETTER DENOTES TYPE)	
A [Symbol]	EMERGENCY LIGHTING BATTERY UNIT.	
A [Symbol]	EMERGENCY BATTERY PACK WITH 30MINUTES (MIN) LIGHTING WITH INTEGRAL LIGHTING HEADS	
A [Symbol]	WALL MOUNTED LOW VOLTAGE LIGHTING HEAD, MOUNTED DIRECTLY TO BATTERY UNIT OR REMOTELY MOUNTED (TRIANGLES INDICATES NUMBER OF HEADS).	
A [Symbol]	CEILING MOUNTED LOW VOLTAGE LIGHTING HEAD, MOUNTED DIRECTLY TO BATTERY UNIT OR REMOTE MOUNTED (TRIANGLES INDICATES NUMBER OF HEADS).	
A [Symbol]	CEILING MOUNTED EXIT LIGHT FIXTURE LINES ON BOTH SIDE INDICATE DOUBLE SIDED EXIT SIGN	
A [Symbol]	CEILING MOUNTED EXIT LIGHT FIXTURE (ARROW DENOTES EGRESS DIRECTION) ARROWS ON BOTH SIDE INDICATE DOUBLE SIDED EXIT SIGN	
A [Symbol]	WALL MOUNTED EXIT LIGHT FIXTURE (ARROW INDICATES EGRESS DIRECTION), ARROW ON BOTH SIDES INDICATE DOUBLE SIDE EXIT SIGN	
A [Symbol]	CEILING MOUNTED EXIT LIGHT WITH TWO EMERGENCY LIGHTS AND INTEGRAL BATTERY COMBO UNIT (ARROW DENOTES EGRESS DIRECTION)	
A [Symbol]	WALL MOUNTED EXIT LIGHT WITH TWO EMERGENCY LIGHTS AND INTEGRAL BATTERY COMBO UNIT (ARROW DENOTES EGRESS DIRECTION) ARROW ON BOTH SIDE INDICATE DOUBLE SIDE EXIT SIGN	
A [Symbol]	SINGLE POLE LINE VOLTAGE SWITCH 3 - WAY 4 - WAY D - DIMMER F - FAN SWITCH K - KEY OPERATED P - C/W PILOT LIGHT V - VARIABLE SPEED #G - NUMBER OF GANGS	
A [Symbol]	LOW VOLTAGE SWITCH, D - DENOTES DIMMER	
A [Symbol]	MASTER SWITCH	
A [Symbol]	COMBINATION LINE VOLTAGE SWITCH AND OCCUPANCY SENSOR	
A [Symbol]	PHOTOCELL	
A [Symbol]	TIME CLOCK	
A [Symbol]	OCCUPANCY SENSOR WALL MOUNTED L - DENOTES LONG DISTRIBUTION TYPE W - DENOTES WIDE TYPE 360 - DENOTES 360 DEGREES DISTRIBUTION TYPE	
A [Symbol]	OCCUPANCY SENSOR CEILING MOUNTED L - DENOTES LONG DISTRIBUTION TYPE W - DENOTES WIDE TYPE 360 - DENOTES 360 DEGREES DISTRIBUTION TYPE	
A [Symbol]	RECESSED IN GROUND LUMINAIRE (LETTER DENOTES TYPE)	
A [Symbol]	LANDSCAPE LIGHTING (LETTER DENOTES TYPE)	

FIRE ALARM SYMBOL SCHEDULE		
SYMBOL	DESCRIPTION	NOTES
[Symbol]	FIRE ALARM SYSTEM: DUCT SMOKE DETECTOR - PHOTOELECTRIC TYPE	
[Symbol]	FIRE ALARM SYSTEM: SMOKE DETECTOR	
[Symbol]	FIRE ALARM SYSTEM: HEAT DETECTOR (F DENOTES FIXED TEMP (94°C))	
[Symbol]	FIRE ALARM SYSTEM: WALL MOUNTED EVAC SPEAKER	
[Symbol]	FIRE ALARM SYSTEM: ALARM SIGNALLING DEVICE - GONG	
[Symbol]	FIRE ALARM SYSTEM: MANUAL PULL STATION	
[Symbol]	FIRE ALARM SYSTEM: FIRE ALARM HORN	
[Symbol]	FIRE ALARM SYSTEM: BUZZER WITH 10 MIN SILENCE PERIOD	
[Symbol]	FIRE ALARM SYSTEM: CEILING MOUNTED STROBE LIGHT / HORN UNIT	
[Symbol]	FIRE ALARM SYSTEM: WALL MOUNTED STROBE LIGHT / HORN UNIT	
[Symbol]	FIRE ALARM SYSTEM: DOOR HOLDER	
[Symbol]	FIRE ALARM SYSTEM: FIRE ALARM CONTROL PANEL	
[Symbol]	FIRE ALARM SYSTEM: REMOTE ANNUNCIATOR PANEL	
[Symbol]	FIRE ALARM SYSTEM: CEILING MOUNTED STROBE LIGHT UNIT	
[Symbol]	FIRE ALARM SYSTEM: WALL MOUNTED STROBE LIGHT UNIT	
[Symbol]	FIRE ALARM SYSTEM: FIREMAN HANDSET	
[Symbol]	FIRE ALARM SYSTEM: CONTROL OR SIGNALLING ADDRESSABLE MODULE	
[Symbol]	FIRE ALARM SYSTEM: END OF LINE DEVICE	
[Symbol]	CONTROL RELAY	
[Symbol]	MONITOR DEVICE	
[Symbol]	SPRINKLER SYSTEM: PRESSURE SWITCH	
[Symbol]	SPRINKLER SYSTEM: WATER FLOW SWITCH	
[Symbol]	SPRINKLER SYSTEM: GATE VALVE TAMPER ALARM SWITCH	
[Symbol]	CARBON MONOXIDE DETECTOR	
[Symbol]	SMOKE ALARM (LINE VOLTAGE) A - DENOTES CO / SMOKE COMBINATION UNIT	

COMMUNICATION SYMBOL SCHEDULE				
SYMBOL			DESCRIPTION	NOTES
WALL	ABOVE COUNTER	FLOOR		
[Symbol]	[Symbol]	[Symbol]	TELEPHONE OUTLET, P - PAY PHONE	
[Symbol]	[Symbol]	[Symbol]	DATA OUTLET	
[Symbol]	[Symbol]	[Symbol]	CATV OUTLET (CABLE VISION)	
[Symbol]	[Symbol]	[Symbol]	COMBINATION COMMUNICATION - TEL/DATA OUTLET, #D = No. OF DATA CABLES, #V = No. OF VOICE CABLES	
[Symbol]	[Symbol]	[Symbol]	SPECIAL PURPOSE COMMUNICATION OUTLET	
[Symbol]	[Symbol]	[Symbol]	WIRELESS ACCESS POINT	
[Symbol]	[Symbol]	[Symbol]	COMMUNICATION PATCH PANEL WITH RACK	

SECURITY SYMBOL SCHEDULE		
SYMBOL	DESCRIPTION	NOTES
[Symbol]	AUDIBLE PRE-ARM WARNING DEVICE	
[Symbol]	PASSIVE INFRARED SENSOR	
[Symbol]	DOOR CONTACT	
[Symbol]	1500 POUND MAGNETIC DOOR LOCK	
[Symbol]	SECURITY SYSTEM KEYPAD	
[Symbol]	INFRARED BEAM FOR RELEASING MAGNETIC DOOR LOCKS	
[Symbol]	CEILING MOUNTED GLASS BREAKAGE DETECTOR	
[Symbol]	CARD READER	
[Symbol]	AUDIBLE SIREN	
[Symbol]	CCTV	
[Symbol]	PUSH BUTTON / PANIC HARDWARE FOR RELEASING MAGNETIC DOOR LOCKS	
[Symbol]	ELECTRIC DOOR STRIKE	
[Symbol]	REQUEST TO EXIT DEVICE	
[Symbol]	SECURITY ALARM CONTROL PANEL	
[Symbol]	LOCAL ALARM	
[Symbol]	FIRE ALARM SYSTEM: CEILING MOUNTED EVAC SPEAKER	

CONSENT OF THE DRAWING AND DESIGN IS GRANTED BY FORMLINE AND THE DESIGNER. THE DRAWING AND ALL ASSOCIATED DOCUMENTS ARE AN INSTRUMENT OF SERVICE BY THE DESIGNER. THE DRAWING AND THE INFORMATION CONTAINED THEREIN MAY NOT BE REPRODUCED IN WHOLE OR IN PART WITHOUT PRIOR WRITTEN PERMISSION OF THE DESIGNER. THE DESIGNER OF THESE PLANS AND SPECIFICATIONS OWNS IN FULL RESPONSIBILITY OF REPRESENTATION TO ANY PARTY ABOUT THE CONSTRUCTION OF THE WORK REPRESENTED BY THESE PLANS AND SPECIFICATIONS AND SUBCONTRACTORS MUST OBTAIN THE DESIGNER'S WRITTEN PERMISSION AND ALL TIMES THAT THEY CAN PROPERLY CONSTRUCT THE WORK REPRESENTED BY THESE PLANS.

ALL DIMENSIONS ARE IN METRIC UNLESS OTHERWISE NOTED. VERIFY DIMENSIONS. DO NOT SCALE DRAWINGS.

NO.	REMARKS	DATE
9	ISSUED FOR 75% CD	2025-03-13
8	ISSUED FOR BCIH COORDINATION	2025-03-03
7	ISSUED FOR 50% CD	2025-02-07
6	ISSUED FOR 100% DD	2025-01-22
5	ISSUED FOR COSTING	2024-12-11
4	ISSUED FOR DESIGN REVIEW	2024-11-15
3	ISSUED FOR 70% UPDATE	2024-11-10
2	ISSUED FOR APPROVAL - DD REVISION	2024-09-11
1	ISSUED FOR 70%	2023-03-30

consultant

Introba
Victoria
Suite 210 - 1515 Douglas Street
Victoria, BC V8W 2G4
+1 250.418.1288
hello@introba.com
www.introba.com
Permit to Practice Number: 1001785

project title
TILICUM AFFORDABLE HOUSING PHASE 1

319 NORTH FRASER DRIVE
QUESNEL, BC V7J 1Y9

drawing title

LEGEND

drawn by	LK	date	07 02 2025
checked by	WR	date	07 02 2025
scale	AS NOTED		
project number	0010846.000		
seal	sheet	E-001	
	revision no.	6	