

Lhtako Dene Cultural Interpretive Plan



0 100 200m
1:5000

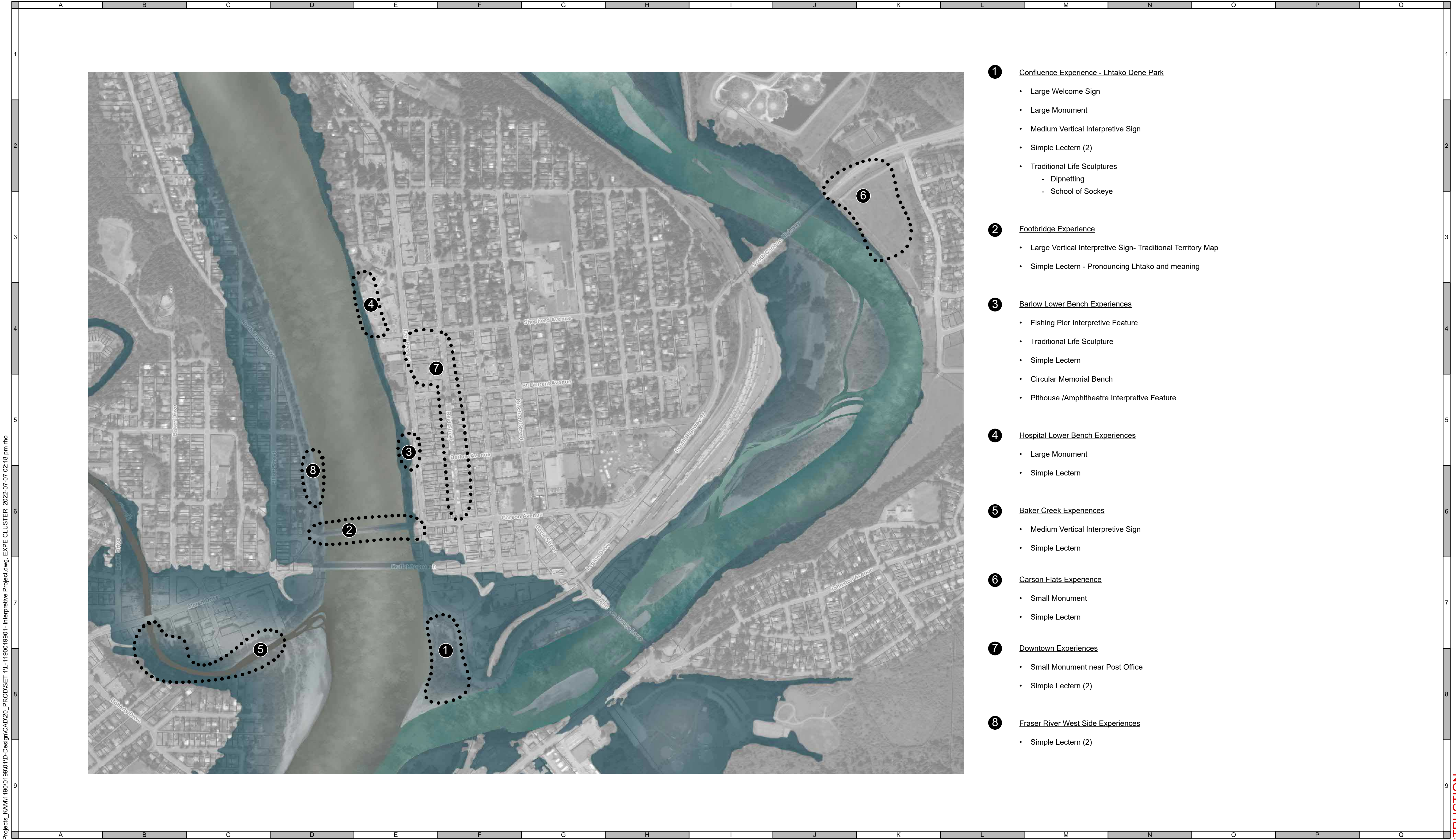
LIST OF DRAWINGS

Sheet Number Title

L00	COVER
L01	EXPERIENCE CLUSTER
L02	CONTENT MATRIX
L03	BARLOW LOWER BENCH EXPERIENCE
L04	CONFLUENCE EXPERIENCE - LHTAKO DENE PARK
L05	LARGE WELCOME SIGN
L06	LARGE MONUMENT
L07	SMALL MONUMENT
L08	LARGE VERTICAL INTERPRETIVE SIGN
L09	MEDIUM VERTICAL INTERPRETIVE SIGN
L10	SIMPLE LECTERN
L11	ROUND GABION BENCH
L12	MONUMENT ENGRAVING LAYOUT
L13	INTERPRETIVE SIGN LAYOUT
L14	PLANTING DETAILS
L15	COST ESTIMATE
APPENDIX A	STANTEC ARCHAEOLOGY REPORT
APPENDIX B	INTERPRETIVE WRITING FINAL REPORT

ISSUED FOR
FINAL REVIEW
JULY 07, 2022
urbansystems.ca

URBAN
SYSTEMS



- 1** Confluence Experience - Lhtako Dene Park
- Large Welcome Sign
 - Large Monument
 - Medium Vertical Interpretive Sign
 - Simple Lectern (2)
 - Traditional Life Sculptures
 - Dipnetting
 - School of Sockeye
- 2** Footbridge Experience
- Large Vertical Interpretive Sign- Traditional Territory Map
 - Simple Lectern - Pronouncing Lhtako and meaning
- 3** Barlow Lower Bench Experiences
- Fishing Pier Interpretive Feature
 - Traditional Life Sculpture
 - Simple Lectern
 - Circular Memorial Bench
 - Pithouse /Amphitheatre Interpretive Feature
- 4** Hospital Lower Bench Experiences
- Large Monument
 - Simple Lectern
- 5** Baker Creek Experiences
- Medium Vertical Interpretive Sign
 - Simple Lectern
- 6** Carson Flats Experience
- Small Monument
 - Simple Lectern
- 7** Downtown Experiences
- Small Monument near Post Office
 - Simple Lectern (2)
- 8** Fraser River West Side Experiences
- Simple Lectern (2)

ATTENTION
This drawing is prepared for the sole use of City of Quesnel
No representations of any kind are made by Urban Systems Ltd. or its employees
to any party with whom Urban Systems Ltd. does not have a contract.

WARNING
Utilities or structures shown on this drawing were compiled from information
supplied by various parties and may not be complete or accurate. Expose and
conclusively confirm the location in the field all underground utilities and structures
indicated on this drawing. all underground utilities in the area of the proposed work
and any utilities or structures reasonably apparent from an inspection of the
proposed work. Urban Systems Ltd. assumes no responsibility for loss or damage
caused by third party negligence or failure to comply with the above.

SURVEY INFORMATION
Prepared by: Urban Systems Ltd
Coordinate System: NAD83
Compilation Date: March 2022

**ISSUED FOR
FINAL REVIEW**
JULY 07, 2022
urbansystems.ca

Professional Seals

#	Date	Issue / Revision	App
A	2022-03-31		REVIEW
B	2022-05-16		ISSUED FOR REVIEW
C	2022-07-07		FINAL REVIEW

**CITY OF
Quesnel**

**URBAN
SYSTEMS**

Scale 1:5000 0 100 200m

Quality Control by
Designed by
Drawn by

C. Larouche
S. McCoy
R. Ho

**Lhtako Dene Cultural Interpretive
Plan
EXPERIENCE CLUSTER**

Sheet Number 1 of 15
Project Number 1190.0199.01
Drawing Number L01
Revision C

\\us1urban-systems.com\projects\Projects_KAM\1190019901\1D-Design\CAD\20_PROD\SET 1\L-1190019901 - Interpretive Project.dwg, EXPE CLUSTER, 2022-07-07 02:18 pm rno

NOT FOR CONSTRUCTION

\\us1urban-systems.com\projects\Projects_KAM\1190019901\1D-Design\CAD\20_PROD\SET_1\L-1190019901 - Interpretive Project.dwg, MATRIX, 2022-07-07 02:18 pm rno

	A	B	C	D	E	F	G	H	I	J	K	L	M	N	O	P	Q																																																							
1	<table><tr><th>Experience Cluster</th><th>Theme</th><th>Content</th><th>Visitor Experience</th><th>Media</th></tr><tr><td rowspan="4">1. Confluence - Lhtako Dene Park</td><td>This is the traditional territory of the Lhtako Dené.</td><td>Welcome to Lhtako Dené territory. The bear and fish in are important representations of our community. Bear is a powerful creature, who looks after us and guides us. He tells us when the fish are coming.¹</td><td>Visitors arriving in the park will see a large sign welcoming them and indicating that this is Lhtako Dené territory.</td><td>Large Welcome Sign</td></tr><tr><td>Traditional ways of life were practiced here for thousands of years and carry on today.</td><td>At one time we spent the winter in pithouses.² Less than 2 km south of Baker Creek are four additional archaeological sites that are indicative of a large precontact village occupation.³ At one time, there were camps on the west side of the river and lots of activity along the river. People would camp here, fish, pick berries, dry fish, gather and trade.⁴ At one time we followed the seasons, hunting, fishing, and gathering medicinal plants. That is our medicine wheel – the seasons and activities.^{5,6} “Our ancestors taught us how to live off the land and we are still doing it to this day, getting our medicines, our birch bark, all our berries”^{7,8} These rivers have always provided fish. At one time we made our dip nets and fished here, processed the fish and then dried the meat on racks.⁹</td><td>Moving further into the park landscape they will notice a cluster of sculptures and a pithouse/ amphitheatre tucked into the berm. The space has room for 50 – 75 people (TBC) to gather, potentially for interpretive programming or Lhtako Dené events. The pithouse has a partial roof and terraced seating. A graphic explores pithouses and camps that were once along the west side of the river.</td><td>Large Monument Medium Vertical Interpretive Sign</td></tr><tr><td></td><td></td><td>Nearby, traditional life sculptures depict a school of sockeye salmon and a fish drying rack and accompanying graphic panels tell the story.</td><td>Lectern (2) Traditional life sculptures: school of sockeye, fish drying rack</td></tr><tr><td>2. Footbridge</td><td>Lhtako, where the waters meet, at the confluence of the Quesnel and Fraser rivers and Baker Creek, is a significant village site and an important place in our traditional territory. This is the traditional territory of the Lhtako Dené.</td><td>At one time Carrier people inhabited the north-central area of what is now known as British Columbia. They controlled the land from the Coast Mountains all the way across to the Rockies, and 300 km north of Takla Lake and down to the Chilcotin plateau.¹⁰<ul style="list-style-type: none">- There was once a population of 15,000 in the surrounding area.- Today, our main community is just south of Quesnel. Our community is part of the Dakelh (or Southern Dakelh) Nation in the Athapaskan language group. Our traditional language is Carrier.<ul style="list-style-type: none">- How to pronounce Lhtako Dené.- The meaning of Lhtako Dené: where the three waters meet.- Today we are teaching our young people the language, so they can carry it on.</td><td>Near the entrance to the pedestrian bridge, pedestrians will see a large interpretive sign with a map of Lhtako Dené territory. An accompanying lectern explains what this area is called and how to pronounce a few key phrases.</td><td>Large Vertical Interpretive Sign with territory map Lectern</td></tr><tr><td rowspan="3">3. Barlow lower bench</td><td>Traditional ways of life were practiced here for thousands of years and carry on today. Our ancestors are here along the rivers—treat their resting places with respect.</td><td>These rivers have always provided fish. At one time we made our dip nets and fished here, processed the fish and then dried the meat on racks. The expression “I love you more than 1000 sockeye” is about this area; where potential mates would meet.¹¹ There are many ancestral remains along the rivers’ edge and throughout the City of Quesnel. Some Elders will not walk here as there are too many spirits.¹² This is a place to sit and remember the ancestors in a place they had deep connections to.</td><td>At this location along the river, sculptures, a fishing pier interpretive feature and lectern provide an interesting cluster of interpretive experiences that evoke a time when Lhtako Dené ancestors gathered and fished here on the river, using dip nets. Salmon is an important part of their way of life. Nearby, a circular memorial bench associated with a tree provides a place to memorialize ancestors buried along the river and a place to sit with views to the river.</td><td>Fishing Pier Interpretive Feature Traditional life sculpture: school of sockeye Lectern Pithouse/ amphitheatre Circular Memorial Bench</td></tr><tr><td rowspan="2">4. Hospital lower bench</td><td>Our ancestors are here along the rivers—treat their resting places with respect. Traditional ways of life were practiced here for thousands of years and carry on today.</td><td>There are many ancestral remains along the rivers’ edge and throughout the City of Quesnel.¹³ The burial sites are a legacy of smallpox in the community.¹⁴<ul style="list-style-type: none">- Europeans brought smallpox to BC, killing almost 1/3 of the Indigenous population in what is now known as BC.¹⁵- There are mass grave sites from this era; there are burial sites in many places. Drumming, dancing and singing are important healing traditions that we are passing on to the younger generation. “Your heart and mind are there, the drum beat, the voices you hear, it is of all your feeling, and the music, many says it is a prayer”¹⁶</td><td>At key points throughout the experience, monuments memorialize the ancestors who were buried throughout the area. This larger monument carries the story of smallpox and memorializes large numbers of people buried in the area. A simple lectern introduces traditions that are being passed on to the next generation.</td><td>Large Monument Lectern</td></tr><tr><td>5. Baker Creek</td><td>Traditional ways of life were practiced here for thousands of years and carry on today.</td><td>We are taught by the Elders to respect our land. The land provides everything we needed to survive and heal ourselves.<ul style="list-style-type: none">- “That’s how we were taught, from my grandmother and my great grandmother”¹⁷ “We have all our animals here, our 4-legged, our fin people, the wing people, the ones that crawl on good mother earth”¹⁸ “We take something from the land, like a four legged – a moose or deer – we respect that, and we pray – say a little ceremony. We tell them thank you for giving us your life”¹⁹</td><td>Visitors come across this medium vertical panel that explores close relationship of Lhtako Dené to the land and everything that it provides.</td><td>Medium Vertical Interpretation Panel Lectern</td></tr><tr><td rowspan="2">6. Carson flats</td><td>Our ancestors are here along the rivers—treat their resting places with respect. Traditional ways of life were practiced here for thousands of years and carry on today.</td><td>There are many ancestral remains along the rivers’ edge and throughout the City of Quesnel At one time we lived in pit houses. House pits have been found in this area – signs of a settlement here.</td><td>This smaller monument memorializes ancestors that were buried in this area. The abalone shell and feather shape give visitors ques to how smudging is used. A simple lectern introduces the idea that there was a settlement here, with pithouses.</td><td>Small Monument Lectern</td></tr><tr><td>7. Downtown</td><td>Our ancestors are here along the rivers—treat their resting places with respect.</td><td>There are many ancestral remains along the rivers’ edge and throughout the City of Quesnel.<ul style="list-style-type: none">- Ellie Peters: felt a spirit grab her ankle at the post office and she fell down. It was a spirit wanting help to be released.²⁰- Ellie Scott lived in a cabin near where Safeway is now.²¹</td><td>This smaller monument memorializes ancestors that were buried in this area. The abalone shell and feather shape give visitors ques to how smudging is used. Stories from Lhtako Dené may be included.</td><td>Small Monument Lectern (2)</td></tr><tr><td>7</td><td>8. Fraser River west side</td><td>This is the traditional territory of the Lhtako Dené.</td><td>Before there was a bridge over the river, Lhtako Dené crossed using rafts, made from lashing logs together.<ul style="list-style-type: none">- At one time, Lhtako Dené were forbidden from crossing the river into downtown Quesnel; they were excluded from the restaurants and businesses there and fined and jailed.²² Story of man with a cabin near the Friendship Centre:²³<ul style="list-style-type: none">- the land was sold to the Friendship Centre for \$10,000.- he stood on the street corner and gave the money away because he was a Chief and didn’t have the right to sell the land.</td><td>On the west side of the river, two lecterns speak to crossing the river before there was a bridge here and the story of a Chief who gave away money from the sale of his cabin.</td><td>Lectern (2)</td></tr></table>																	Experience Cluster	Theme	Content	Visitor Experience	Media	1. Confluence - Lhtako Dene Park	This is the traditional territory of the Lhtako Dené.	Welcome to Lhtako Dené territory. The bear and fish in are important representations of our community. Bear is a powerful creature, who looks after us and guides us. He tells us when the fish are coming. ¹	Visitors arriving in the park will see a large sign welcoming them and indicating that this is Lhtako Dené territory.	Large Welcome Sign	Traditional ways of life were practiced here for thousands of years and carry on today.	At one time we spent the winter in pithouses. ² Less than 2 km south of Baker Creek are four additional archaeological sites that are indicative of a large precontact village occupation. ³ At one time, there were camps on the west side of the river and lots of activity along the river. People would camp here, fish, pick berries, dry fish, gather and trade. ⁴ At one time we followed the seasons, hunting, fishing, and gathering medicinal plants. That is our medicine wheel – the seasons and activities. ^{5,6} “Our ancestors taught us how to live off the land and we are still doing it to this day, getting our medicines, our birch bark, all our berries” ^{7,8} These rivers have always provided fish. At one time we made our dip nets and fished here, processed the fish and then dried the meat on racks. ⁹	Moving further into the park landscape they will notice a cluster of sculptures and a pithouse/ amphitheatre tucked into the berm. The space has room for 50 – 75 people (TBC) to gather, potentially for interpretive programming or Lhtako Dené events. The pithouse has a partial roof and terraced seating. A graphic explores pithouses and camps that were once along the west side of the river.	Large Monument Medium Vertical Interpretive Sign			Nearby, traditional life sculptures depict a school of sockeye salmon and a fish drying rack and accompanying graphic panels tell the story.	Lectern (2) Traditional life sculptures: school of sockeye, fish drying rack	2. Footbridge	Lhtako, where the waters meet, at the confluence of the Quesnel and Fraser rivers and Baker Creek, is a significant village site and an important place in our traditional territory. This is the traditional territory of the Lhtako Dené.	At one time Carrier people inhabited the north-central area of what is now known as British Columbia. They controlled the land from the Coast Mountains all the way across to the Rockies, and 300 km north of Takla Lake and down to the Chilcotin plateau. ¹⁰ <ul style="list-style-type: none">- There was once a population of 15,000 in the surrounding area.- Today, our main community is just south of Quesnel. Our community is part of the Dakelh (or Southern Dakelh) Nation in the Athapaskan language group. Our traditional language is Carrier. <ul style="list-style-type: none">- How to pronounce Lhtako Dené.- The meaning of Lhtako Dené: where the three waters meet.- Today we are teaching our young people the language, so they can carry it on.	Near the entrance to the pedestrian bridge, pedestrians will see a large interpretive sign with a map of Lhtako Dené territory. An accompanying lectern explains what this area is called and how to pronounce a few key phrases.	Large Vertical Interpretive Sign with territory map Lectern	3. Barlow lower bench	Traditional ways of life were practiced here for thousands of years and carry on today. Our ancestors are here along the rivers—treat their resting places with respect.	These rivers have always provided fish. At one time we made our dip nets and fished here, processed the fish and then dried the meat on racks. The expression “I love you more than 1000 sockeye” is about this area; where potential mates would meet. ¹¹ There are many ancestral remains along the rivers’ edge and throughout the City of Quesnel. Some Elders will not walk here as there are too many spirits. ¹² This is a place to sit and remember the ancestors in a place they had deep connections to.	At this location along the river, sculptures, a fishing pier interpretive feature and lectern provide an interesting cluster of interpretive experiences that evoke a time when Lhtako Dené ancestors gathered and fished here on the river, using dip nets. Salmon is an important part of their way of life. Nearby, a circular memorial bench associated with a tree provides a place to memorialize ancestors buried along the river and a place to sit with views to the river.	Fishing Pier Interpretive Feature Traditional life sculpture: school of sockeye Lectern Pithouse/ amphitheatre Circular Memorial Bench	4. Hospital lower bench	Our ancestors are here along the rivers—treat their resting places with respect. Traditional ways of life were practiced here for thousands of years and carry on today.	There are many ancestral remains along the rivers’ edge and throughout the City of Quesnel. ¹³ The burial sites are a legacy of smallpox in the community. ¹⁴ <ul style="list-style-type: none">- Europeans brought smallpox to BC, killing almost 1/3 of the Indigenous population in what is now known as BC.¹⁵- There are mass grave sites from this era; there are burial sites in many places. Drumming, dancing and singing are important healing traditions that we are passing on to the younger generation. “Your heart and mind are there, the drum beat, the voices you hear, it is of all your feeling, and the music, many says it is a prayer” ¹⁶	At key points throughout the experience, monuments memorialize the ancestors who were buried throughout the area. This larger monument carries the story of smallpox and memorializes large numbers of people buried in the area. A simple lectern introduces traditions that are being passed on to the next generation.	Large Monument Lectern	5. Baker Creek	Traditional ways of life were practiced here for thousands of years and carry on today.	We are taught by the Elders to respect our land. The land provides everything we needed to survive and heal ourselves. <ul style="list-style-type: none">- “That’s how we were taught, from my grandmother and my great grandmother”¹⁷ “We have all our animals here, our 4-legged, our fin people, the wing people, the ones that crawl on good mother earth” ¹⁸ “We take something from the land, like a four legged – a moose or deer – we respect that, and we pray – say a little ceremony. We tell them thank you for giving us your life” ¹⁹	Visitors come across this medium vertical panel that explores close relationship of Lhtako Dené to the land and everything that it provides.	Medium Vertical Interpretation Panel Lectern	6. Carson flats	Our ancestors are here along the rivers—treat their resting places with respect. Traditional ways of life were practiced here for thousands of years and carry on today.	There are many ancestral remains along the rivers’ edge and throughout the City of Quesnel At one time we lived in pit houses. House pits have been found in this area – signs of a settlement here.	This smaller monument memorializes ancestors that were buried in this area. The abalone shell and feather shape give visitors ques to how smudging is used. A simple lectern introduces the idea that there was a settlement here, with pithouses.	Small Monument Lectern	7. Downtown	Our ancestors are here along the rivers—treat their resting places with respect.	There are many ancestral remains along the rivers’ edge and throughout the City of Quesnel. <ul style="list-style-type: none">- Ellie Peters: felt a spirit grab her ankle at the post office and she fell down. It was a spirit wanting help to be released.²⁰- Ellie Scott lived in a cabin near where Safeway is now.²¹	This smaller monument memorializes ancestors that were buried in this area. The abalone shell and feather shape give visitors ques to how smudging is used. Stories from Lhtako Dené may be included.	Small Monument Lectern (2)	7	8. Fraser River west side	This is the traditional territory of the Lhtako Dené.	Before there was a bridge over the river, Lhtako Dené crossed using rafts, made from lashing logs together. <ul style="list-style-type: none">- At one time, Lhtako Dené were forbidden from crossing the river into downtown Quesnel; they were excluded from the restaurants and businesses there and fined and jailed.²² Story of man with a cabin near the Friendship Centre: ²³ <ul style="list-style-type: none">- the land was sold to the Friendship Centre for \$10,000.- he stood on the street corner and gave the money away because he was a Chief and didn’t have the right to sell the land.	On the west side of the river, two lecterns speak to crossing the river before there was a bridge here and the story of a Chief who gave away money from the sale of his cabin.	Lectern (2)	1
Experience Cluster	Theme	Content	Visitor Experience	Media																																																																				
1. Confluence - Lhtako Dene Park	This is the traditional territory of the Lhtako Dené.	Welcome to Lhtako Dené territory. The bear and fish in are important representations of our community. Bear is a powerful creature, who looks after us and guides us. He tells us when the fish are coming. ¹	Visitors arriving in the park will see a large sign welcoming them and indicating that this is Lhtako Dené territory.	Large Welcome Sign																																																																				
	Traditional ways of life were practiced here for thousands of years and carry on today.	At one time we spent the winter in pithouses. ² Less than 2 km south of Baker Creek are four additional archaeological sites that are indicative of a large precontact village occupation. ³ At one time, there were camps on the west side of the river and lots of activity along the river. People would camp here, fish, pick berries, dry fish, gather and trade. ⁴ At one time we followed the seasons, hunting, fishing, and gathering medicinal plants. That is our medicine wheel – the seasons and activities. ^{5,6} “Our ancestors taught us how to live off the land and we are still doing it to this day, getting our medicines, our birch bark, all our berries” ^{7,8} These rivers have always provided fish. At one time we made our dip nets and fished here, processed the fish and then dried the meat on racks. ⁹	Moving further into the park landscape they will notice a cluster of sculptures and a pithouse/ amphitheatre tucked into the berm. The space has room for 50 – 75 people (TBC) to gather, potentially for interpretive programming or Lhtako Dené events. The pithouse has a partial roof and terraced seating. A graphic explores pithouses and camps that were once along the west side of the river.	Large Monument Medium Vertical Interpretive Sign																																																																				
			Nearby, traditional life sculptures depict a school of sockeye salmon and a fish drying rack and accompanying graphic panels tell the story.	Lectern (2) Traditional life sculptures: school of sockeye, fish drying rack																																																																				
	2. Footbridge	Lhtako, where the waters meet, at the confluence of the Quesnel and Fraser rivers and Baker Creek, is a significant village site and an important place in our traditional territory. This is the traditional territory of the Lhtako Dené.	At one time Carrier people inhabited the north-central area of what is now known as British Columbia. They controlled the land from the Coast Mountains all the way across to the Rockies, and 300 km north of Takla Lake and down to the Chilcotin plateau. ¹⁰ <ul style="list-style-type: none">- There was once a population of 15,000 in the surrounding area.- Today, our main community is just south of Quesnel. Our community is part of the Dakelh (or Southern Dakelh) Nation in the Athapaskan language group. Our traditional language is Carrier. <ul style="list-style-type: none">- How to pronounce Lhtako Dené.- The meaning of Lhtako Dené: where the three waters meet.- Today we are teaching our young people the language, so they can carry it on.	Near the entrance to the pedestrian bridge, pedestrians will see a large interpretive sign with a map of Lhtako Dené territory. An accompanying lectern explains what this area is called and how to pronounce a few key phrases.	Large Vertical Interpretive Sign with territory map Lectern																																																																			
3. Barlow lower bench	Traditional ways of life were practiced here for thousands of years and carry on today. Our ancestors are here along the rivers—treat their resting places with respect.	These rivers have always provided fish. At one time we made our dip nets and fished here, processed the fish and then dried the meat on racks. The expression “I love you more than 1000 sockeye” is about this area; where potential mates would meet. ¹¹ There are many ancestral remains along the rivers’ edge and throughout the City of Quesnel. Some Elders will not walk here as there are too many spirits. ¹² This is a place to sit and remember the ancestors in a place they had deep connections to.	At this location along the river, sculptures, a fishing pier interpretive feature and lectern provide an interesting cluster of interpretive experiences that evoke a time when Lhtako Dené ancestors gathered and fished here on the river, using dip nets. Salmon is an important part of their way of life. Nearby, a circular memorial bench associated with a tree provides a place to memorialize ancestors buried along the river and a place to sit with views to the river.	Fishing Pier Interpretive Feature Traditional life sculpture: school of sockeye Lectern Pithouse/ amphitheatre Circular Memorial Bench																																																																				
	4. Hospital lower bench	Our ancestors are here along the rivers—treat their resting places with respect. Traditional ways of life were practiced here for thousands of years and carry on today.	There are many ancestral remains along the rivers’ edge and throughout the City of Quesnel. ¹³ The burial sites are a legacy of smallpox in the community. ¹⁴ <ul style="list-style-type: none">- Europeans brought smallpox to BC, killing almost 1/3 of the Indigenous population in what is now known as BC.¹⁵- There are mass grave sites from this era; there are burial sites in many places. Drumming, dancing and singing are important healing traditions that we are passing on to the younger generation. “Your heart and mind are there, the drum beat, the voices you hear, it is of all your feeling, and the music, many says it is a prayer” ¹⁶	At key points throughout the experience, monuments memorialize the ancestors who were buried throughout the area. This larger monument carries the story of smallpox and memorializes large numbers of people buried in the area. A simple lectern introduces traditions that are being passed on to the next generation.	Large Monument Lectern																																																																			
		5. Baker Creek	Traditional ways of life were practiced here for thousands of years and carry on today.	We are taught by the Elders to respect our land. The land provides everything we needed to survive and heal ourselves. <ul style="list-style-type: none">- “That’s how we were taught, from my grandmother and my great grandmother”¹⁷ “We have all our animals here, our 4-legged, our fin people, the wing people, the ones that crawl on good mother earth” ¹⁸ “We take something from the land, like a four legged – a moose or deer – we respect that, and we pray – say a little ceremony. We tell them thank you for giving us your life” ¹⁹	Visitors come across this medium vertical panel that explores close relationship of Lhtako Dené to the land and everything that it provides.	Medium Vertical Interpretation Panel Lectern																																																																		
6. Carson flats	Our ancestors are here along the rivers—treat their resting places with respect. Traditional ways of life were practiced here for thousands of years and carry on today.	There are many ancestral remains along the rivers’ edge and throughout the City of Quesnel At one time we lived in pit houses. House pits have been found in this area – signs of a settlement here.	This smaller monument memorializes ancestors that were buried in this area. The abalone shell and feather shape give visitors ques to how smudging is used. A simple lectern introduces the idea that there was a settlement here, with pithouses.	Small Monument Lectern																																																																				
	7. Downtown	Our ancestors are here along the rivers—treat their resting places with respect.	There are many ancestral remains along the rivers’ edge and throughout the City of Quesnel. <ul style="list-style-type: none">- Ellie Peters: felt a spirit grab her ankle at the post office and she fell down. It was a spirit wanting help to be released.²⁰- Ellie Scott lived in a cabin near where Safeway is now.²¹	This smaller monument memorializes ancestors that were buried in this area. The abalone shell and feather shape give visitors ques to how smudging is used. Stories from Lhtako Dené may be included.	Small Monument Lectern (2)																																																																			
7	8. Fraser River west side	This is the traditional territory of the Lhtako Dené.	Before there was a bridge over the river, Lhtako Dené crossed using rafts, made from lashing logs together. <ul style="list-style-type: none">- At one time, Lhtako Dené were forbidden from crossing the river into downtown Quesnel; they were excluded from the restaurants and businesses there and fined and jailed.²² Story of man with a cabin near the Friendship Centre: ²³ <ul style="list-style-type: none">- the land was sold to the Friendship Centre for \$10,000.- he stood on the street corner and gave the money away because he was a Chief and didn’t have the right to sell the land.	On the west side of the river, two lecterns speak to crossing the river before there was a bridge here and the story of a Chief who gave away money from the sale of his cabin.	Lectern (2)																																																																			
2																	2																																																							
3																	3																																																							
4																	4																																																							
5																	5																																																							
6																	6																																																							
7																	7																																																							
8																	8																																																							
9																	9																																																							
	A	B	C	D	E	F	G	H	I	J	K	L	M	N	O	P	Q																																																							

1. Meeting notes, July 20, 2021

2. See Arch and Ethno.pdf, p 5

3. See Arch and Ethno of Quesnel.pdf, p 3

4. Meeting notes, July 20, 2021

5. OIM: Ellie interview

6. See Arch and Ethno.pdf, p 6-7

7. OIM: Bryant Paul interview

8. See Arch and Ethno.pdf, p 7

9. See Arch and Ethno.pdf, p 5-6

10. https://www.quesnelmuseum.ca/FootprintsInStone/History/General-History.html. To be confirmed

11. Meeting notes, May 14, 2021. More information needed – interview required

12. Meeting notes, July 20, 2021

13. According to the local Quesnel Indian Blackwater Johnnie’s testimony to the Royal Commission in 1914, “There are over 200 buried there” who were interred at this location during the 1861 smallpox epidemic (Royal Commission on Indian Affairs 1914: 162-163)

14. Meeting notes, July 20, 2021

15. See also Arch and Enthno.pdf, p 5

16. OIM: Terri Boyd interview

17. IBID

18. OIM: Bryant Paul interview

19. IBID

20. Meeting notes, May 14, 2021. An interview would be needed to gather quotes and more information to tell this story. We will need to confirm with Ellie if this is a story she would like to tell here. Alternatively, a small monument will let visitors know that there are ancestors buried nearby.

21. Meeting notes, May 14, 2021. More research is required. We understand there may be journals at the museum

22. Meeting notes, May 14, 2021

23. Meeting notes, May 14, 2021. More context is needed for this story.

1. Meeting notes, July 20, 2021

2. See Arch and Ethno.pdf, p 5

3. See Arch and Ethno of Quesnel.pdf, p 3

4. Meeting notes, July 20, 2021

5. OIM: Ellie interview

6. See Arch and Ethno.pdf, p 6-7

7. OIM: Bryant Paul interview

8. See Arch and Ethno.pdf, p 7

9. See Arch and Ethno.pdf, p 5-6

10. <https://www.quesnelmuseum.ca/FootprintsInStone/History/General-History.html>. To be confirmed

11. Meeting notes, May 14, 2021. More information needed – interview required

12. Meeting notes, July 20, 2021

13. According to the local Quesnel Indian Blackwater Johnnie’s testimony to the Royal Commission in 1914, “There are over 200 buried there” who were interred at this location during the 1861 smallpox epidemic (Royal Commission on Indian Affairs 1914: 162-163)
14. Meeting notes, July 20, 2021

15. See also Arch and Ethno.pdf, p 5

16. OIM: Terri Boyd interview

17. IBID

18. OIM: Bryant Paul interview

19. IBID

20. Meeting notes, May 14, 2021. An interview would be needed to gather quotes and more information to tell this story. We will need to confirm with Ellie if this is a story she would like to tell here. Alternatively, a small monument will let visitors know that there are ancestors buried nearby.

21. Meeting notes, May 14, 2021. More research is required. We understand there may be journals at the museum

22. Meeting notes, May 14, 2021

23. Meeting notes, May 14, 2021. More context is needed for this story.

ATTENTION
This drawing is prepared for the sole use of City of Quesnel/
No representations of any kind are made by Urban Systems Ltd. or its employees
to any party with whom Urban Systems Ltd. does not have a contract.

WARNING
Utilities or structures shown on this drawing were compiled from information
supplied by various parties and may not be complete or accurate. Expose and
conclusively confirm the location in the field all underground utilities and structures
indicated on this drawing, all underground utilities in the area of the proposed work
and any utilities or structures reasonably apparent from an inspection of the
proposed work. Urban Systems Ltd. assumes no responsibility for loss or damage
caused by third party negligence or failure to comply with the above.

SURVEY INFORMATION
Prepared by: Urban Systems Ltd
Coordinate System: NAD83
Compilation Date: March 2022

ISSUED FOR
FINAL REVIEW
JULY 07, 2022
urbansystems.ca

Professional Seals

#	Date	Issue / Revision	App
A	2022-03-31		REVIEW
B	2022-05-16		ISSUED FOR REVIEW
C	2022-07-07		FINAL REVIEW



URBAN
SYSTEMS

Scale

AS SHOWN

Quality Control by
Designed by
Drawn by

C. Larouche
S. McCoy
R. Ho

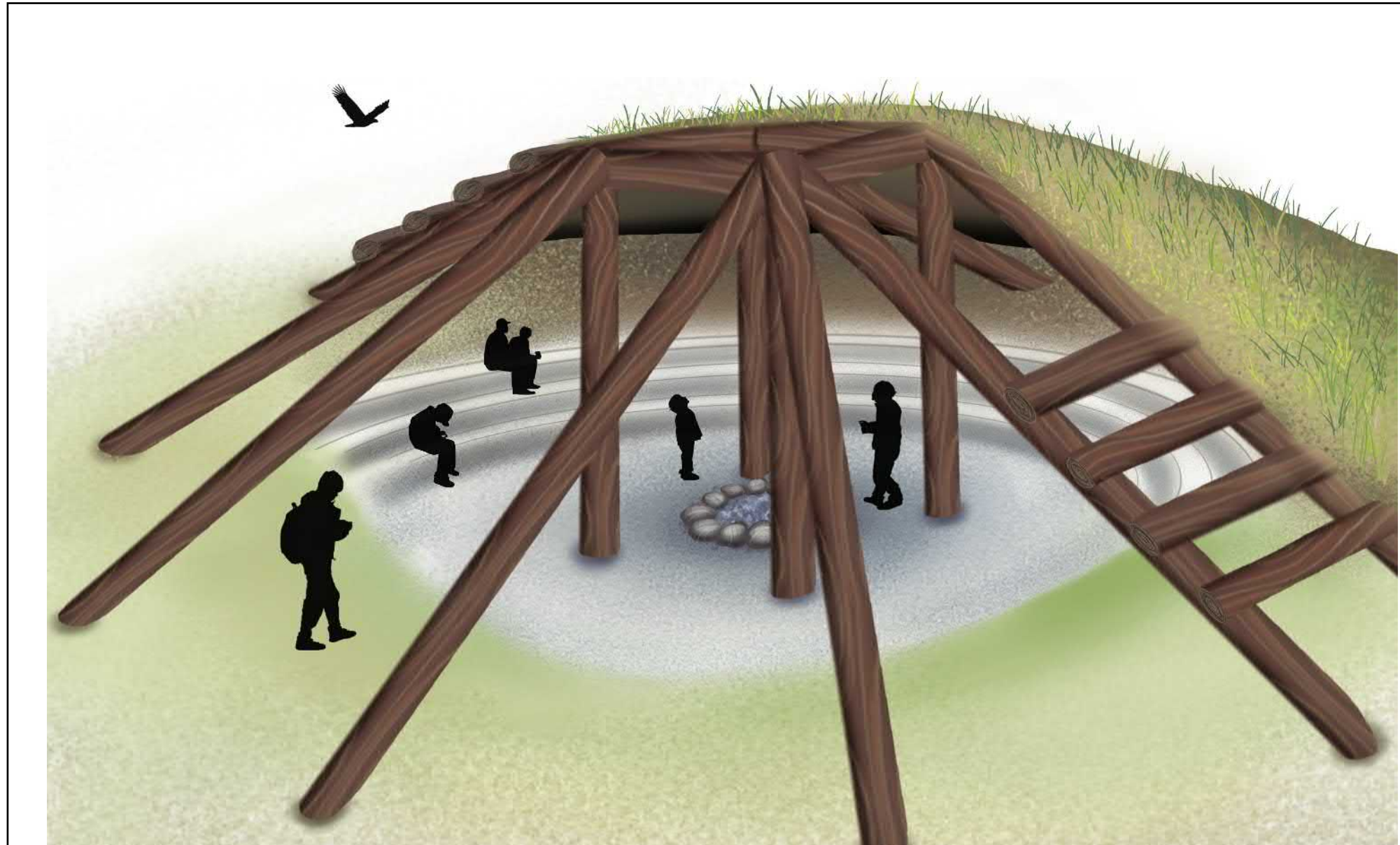
Lhtako Dene Cultural Interpretive
Plan
CONTENT MATRIX

Sheet Number		2 of 15
Project Number	Drawing Number	Revision
1190.0199.01	L02	C

ANSI expand D (34.00 x 22.00 inches) 25mm

NOT FOR CONSTRUCTION

\\us.urbansystems.com\projects\Projects_KAM\1190019901\1D-Design\CAD\20_PROD\SET 1\L-1190019901 - Interpretive Project.dwg, BARLOW, 2022-07-07 02:18 pm rho



Pithouse / Ampitheatre Interpretive Feature

Fishing Pier Interpretive Feature

Simple Lectern

FRASER RIVER

Schedule I - Fishing Pier Interpretive Feature

I.0	Site Preparation/Rehab	15,000.00
I.1	Supply & Install Pier	150,000.00
I.2	Supply & Install Traditional Life Sculpture TBD	30,000.00
I.3	Supply & Install School of Sockeye Sculpture	9,000.00
	SUBTOTAL	\$204,000.00
	15% DESIGN & ENGINEERING COSTS	30,600.00
	30% CONTINGENCY	61,200.00
	TOTAL SCHEDULE "I"	\$295,800.00

Schedule J - Pithouse/Amphitheatre Interpretive Experience

J.0	Site Preparation/Rehab	10,000.00
J.1	Supply & Install Pithouse Structure	200,000.00
	SUBTOTAL	\$210,000.00
	15% DESIGN & ENGINEERING COSTS	31,500.00
	30% CONTINGENCY	63,000.00
	TOTAL SCHEDULE "J"	\$304,500.00

ATTENTION
This drawing is prepared for the sole use of City of Quesnel.
No representations of any kind are made by Urban Systems Ltd. or its employees to any party with whom Urban Systems Ltd. does not have a contract.
WARNING
Utilities or structures shown on this drawing were compiled from information supplied by various parties and may not be complete or accurate. Expose and conclusively confirm the location in the field all underground utilities and structures indicated on this drawing, all underground utilities in the area of the proposed work and any utilities or structures reasonably apparent from an inspection of the proposed work. Urban Systems Ltd. assumes no responsibility for loss or damage caused by third party negligence or failure to comply with the above.

SURVEY INFORMATION
Prepared by: Urban Systems Ltd
Coordinate System: NAD83
Compilation Date: March 2022

**ISSUED FOR
FINAL REVIEW**
JULY 07, 2022
urbansystems.ca

Professional Seals

#	Date	Issue / Revision	App
A	2022-03-31		REVIEW
B	2022-05-16		ISSUED FOR REVIEW
C	2022-07-07		FINAL REVIEW



**URBAN
SYSTEMS**

Scale
1:50 0 1 2m

Quality Control by
Designed by
Drawn by

C. Larouche
S. McCoy
R. Ho

Lhtako Dene Cultural Interpretive Plan BARLOW LOWER BENCH EXPERIENCE		
Sheet Number	3 of 15	
Project Number	Drawing Number	Revision
1190.0199.01	L03	C

ANSI expand D (34.00 x 22.00 inches) 25mm

NOT FOR CONSTRUCTION



\\usurban-systems.com\projects\Projects_KAM\11900\1990\11D-Design\CAD\20_PROJECTSET 1\L-11900\1990-1-Interpretive Project.dwg, WELCOME, 2022-07-07 02:18 pm rho

LEGEND

- (A) Sign Panel:
- .1 Front Sign Panel
 - 12mm thick Corten steel panel, cut to shape, finish to be brushed (exterior).
 - Mechanically fasten into Gabion Unit. No visible hardware on the face.
 - .2 Back Sign Panel
 - 12mm thick Corten steel panel, cut to shape, finish to be brushed (exterior).
 - Mechanically fasten into Gabion Unit. No visible hardware on the face.
- (B) Laser Cut Detail:
- .1 Lettering
 - 12mm thick brushed aluminum lettering, cut to shape.
 - Lettering to be provided and scaled as shown in plans; grind edges to ensure smooth finish with no hazardous chips or protrusions.
 - Apply anti-Graffiti clear coat (all sides).
 - Fasten to Sign Panel. Layout and type of fasteners to be proposed via shop drawings. No visible hardware on face.
 - .2 Laser Cut Pattern
 - 12mm thick brushed aluminum pattern, cut to shape.
 - Laser cut bear and salmon patterns to be provided and scaled as shown in plans; grind edges to ensure smooth finish with no hazardous chips or protrusions.
 - Apply anti-Graffiti clear coat (all sides).
 - Fasten to Sign Panel. Layout and type of fasteners to be proposed via shop drawings.
- (C) Gabion Unit:
- Weld frame together with clean through welds. Grind all welds flat.
 - Touch-up all welds as required with galv. paint.
 - 188 gauge wire mesh and 30mm angle.
- (D) Gabion Fill Material:
- 150-200mm basalt rock to be approved by Landscape Architect.
- (E) Concrete Pile Cap
- Dimensions to be confirmed as per structural shop drawings.
- .1 Reinforcement
- (F) Structural Piles
- Dimensions to be confirmed through shop drawing process.
- (G) Flag and Flag Pole
- Min. 4.88m (16'5") height single section aluminum flag pole with aluminum flash collar
 - Flag dimensions 1500 x 1000mm
- (H) Concrete Footing with ground sleeve and stop bolt
- Dimensions to be confirmed through shop drawing process.

- Notes:
- Drawing shows design intent only. Signage vendor to provide engineered shop drawings sealed by a structural engineer for all components including footings for review and approval by Owner and/or Contract Administrator prior to fabrication.
 - Actual sign content to be provided by Owner prior to fabrication.
 - All graphic elements for laser cutting to be provided by Owner via CAD file.
 - Signage vendor to verify all site dimensions and site conditions prior to fabrication.
 - Signage vendor to provide material samples to review finish prior to fabrication.
 - All dimensions are in millimeters unless otherwise noted.

Schedule A - Large Welcome Sign

A.0	Site Preparation/Rehab	3,500.00
A.1	Supply & Install Concrete Footing/Reinforcement	11,500.00
A.2	Supply & Install Gabion Unit (Steel Frame,Fasteners Basalt Rock)	35,000.00
A.3	Supply & Install Signage Panels	15,000.00
A.4	Supply & Install Flag Pole and Flag	4,000.00
A.5	350mm Growing Medium	8,000.00
A.6	Planting	4,000.00
SUBTOTAL		\$81,000.00
15% DESIGN & ENGINEERING COSTS		12,150.00
30% CONTINGENCY		24,300.00
TOTAL SCHEDULE "A"		\$117,450.00

ELEVATION A - FRONT VIEW

SCALE 1:30

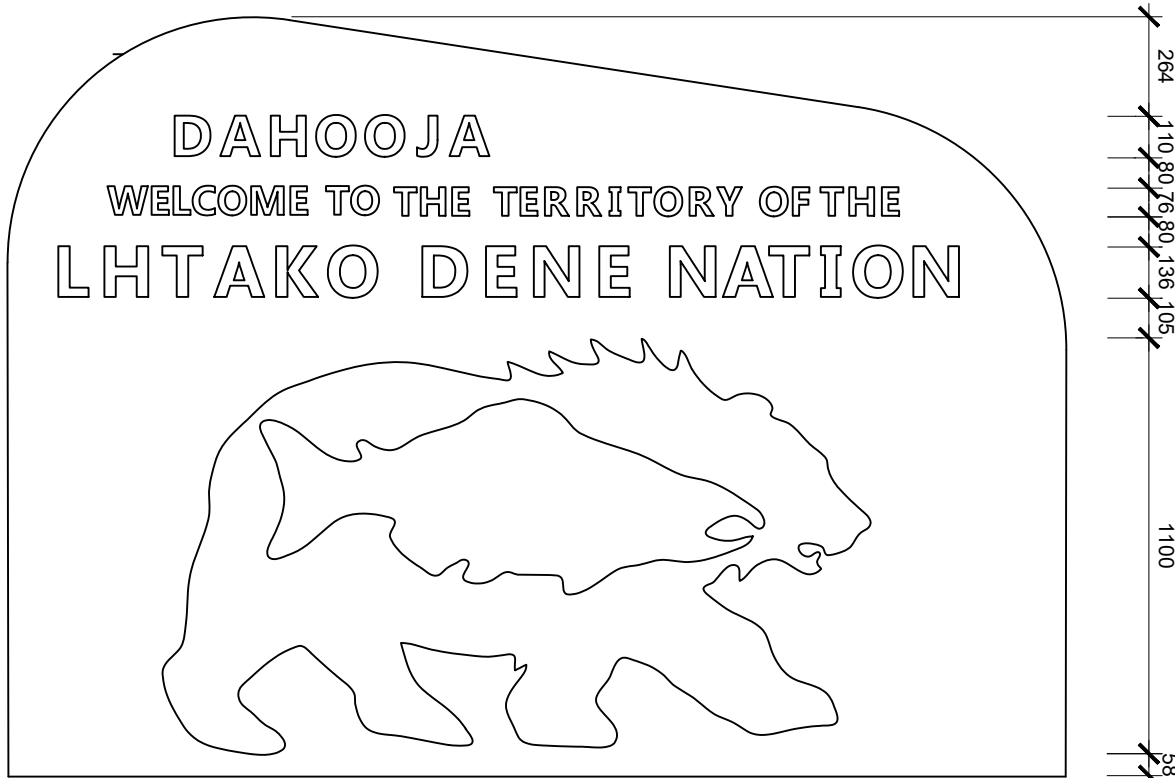
ELEVATION B - BACK VIEW

SCALE 1:30

ELEVATION C - SIDE VIEW (RIGHT) DETAIL SECTION - RIGHT

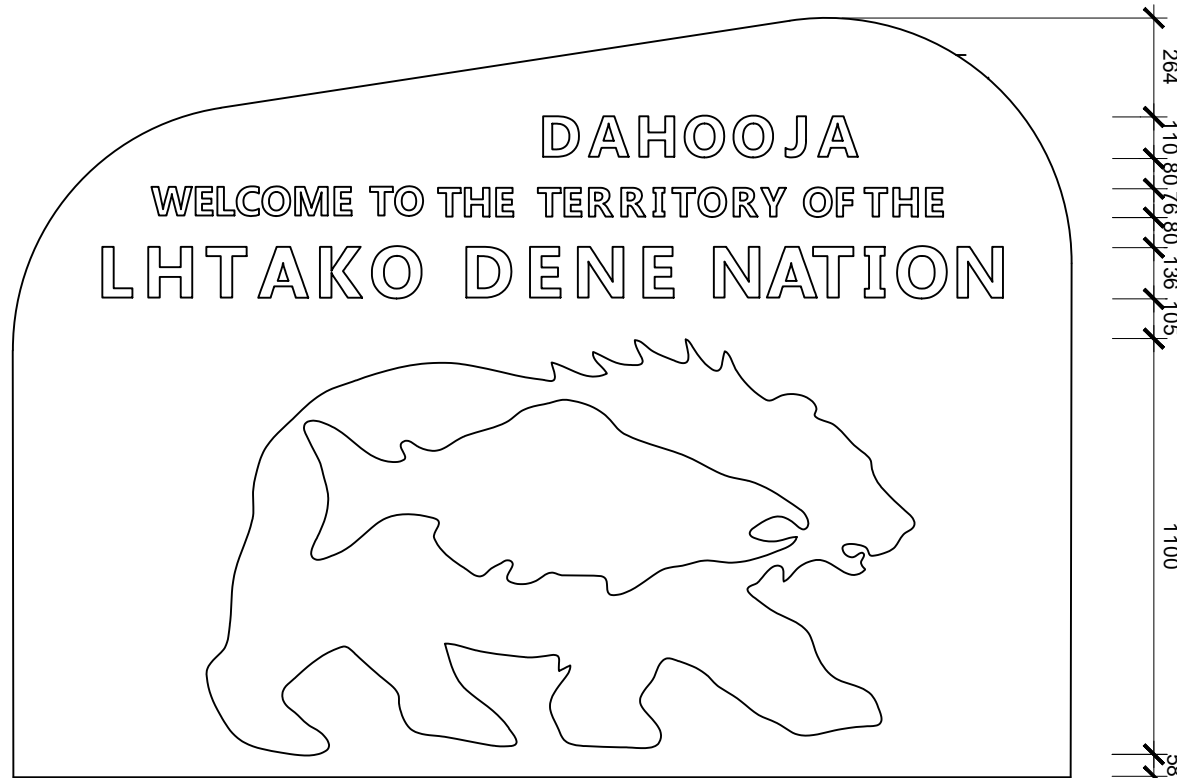
SCALE 1:30

SCALE 1:30



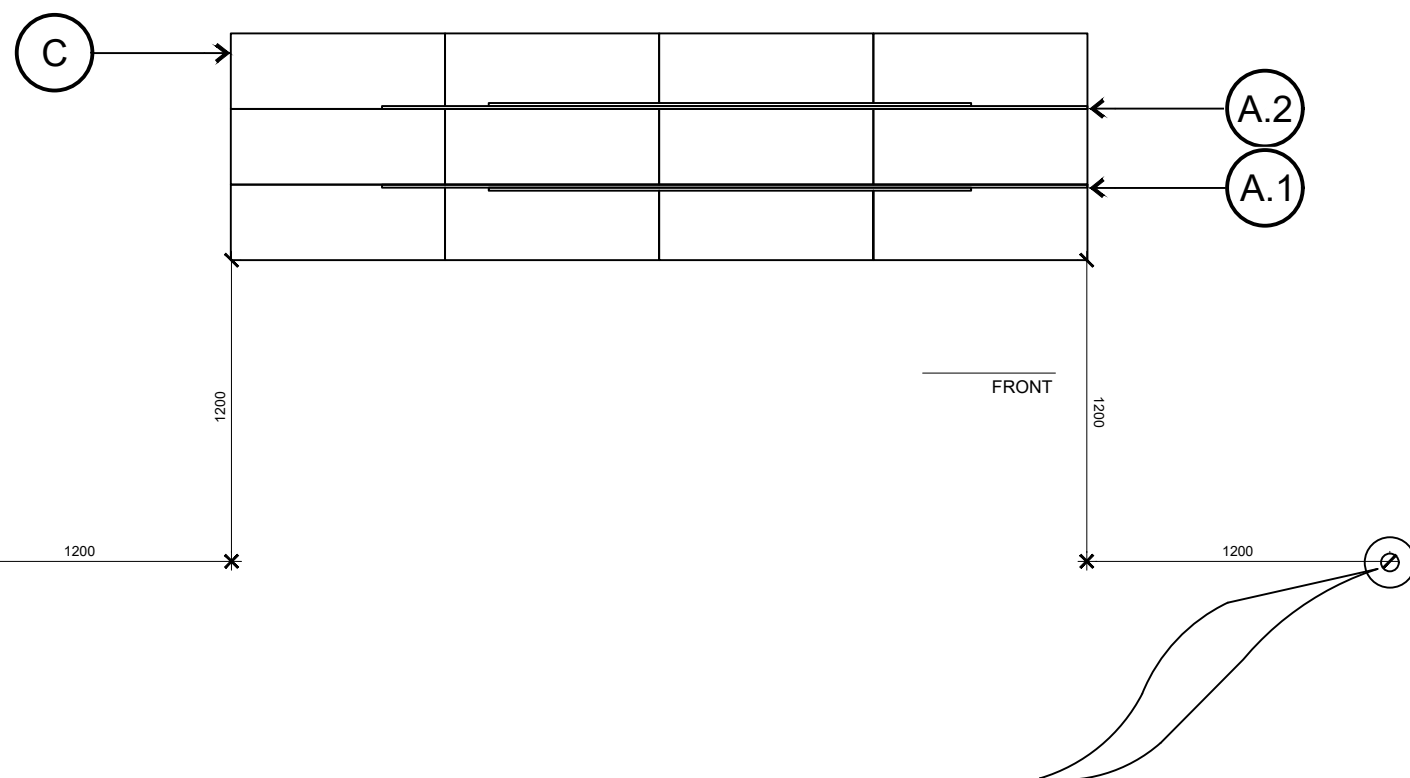
FRONT SIGN LAYOUT

SCALE 1:20



BACK SIGN LAYOUT

SCALE 1:20



PLAN

SCALE 1:30

ATTENTION
This drawing is prepared for the sole use of City of Quesnel
No representations of any kind are made by Urban Systems Ltd. or its employees to any party with whom Urban Systems Ltd. does not have a contract.
WARNING
Utilities or structures shown on this drawing were compiled from information supplied by various parties and may not be complete or accurate. Expose and conclusively confirm the location in the field all underground utilities and structures indicated on this drawing, all underground utilities in the area of the proposed work and any utilities or structures reasonably apparent from an inspection of the proposed work. Urban Systems Ltd. assumes no responsibility for loss or damage caused by third party negligence or failure to comply with the above.

SURVEY INFORMATION
Prepared by: Urban Systems Ltd
Coordinate System: NAD83
Compilation Date: March 2022

ISSUED FOR
FINAL REVIEW
JULY 07, 2022
urbansystems.ca

Professional Seals

#	Date	Issue / Revision	App
A	2022-03-31		REVIEW
B	2022-05-16		ISSUED FOR REVIEW
C	2022-07-07		FINAL REVIEW

CITY OF
Quesnel

URBAN
SYSTEMS

Scale
AS SHOWN

Quality Control by
Designed by
Drawn by

C. Larouche
S. McCoy
R. Ho

Lhtako Dene Cultural Interpretive
Plan
LARGE WELCOME SIGN

Sheet Number 5 of 15
Project Number 1190.0199.01
Drawing Number L05
Revision C

ANSI expand D (34.00 x 22.00 inches) 25mm

NOT FOR CONSTRUCTION

\\usurban-systems.com\projects\KAM11900\1990\1D-Design\CAD\20_PROD\SET 1\L-11900\19901- Interpretive Project.dwg, LGE MON, 2022-07-07 02:19 pm rho

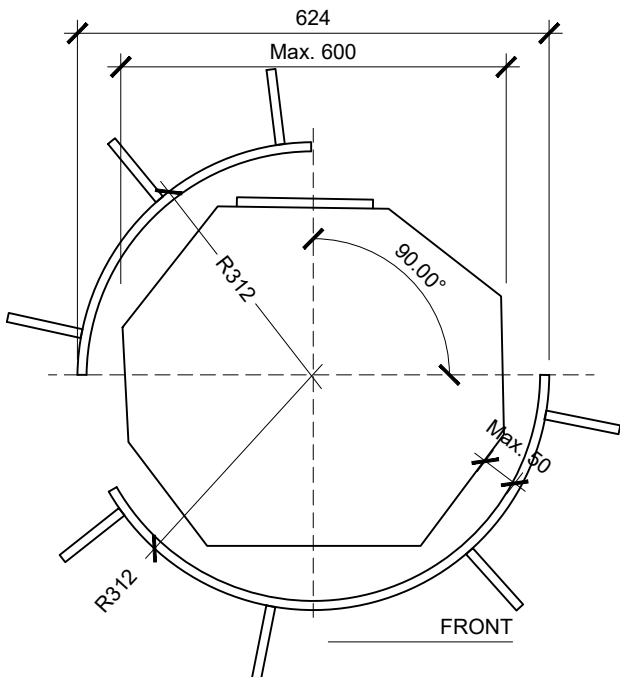
LEGEND

- (A) Metal Sculpture:
- By others.
 - Mechanically fasten onto Basalt Column. No visible hardware on the face.
- (B) Basalt Column:
- Max. 600mm diameter Black Tusk Basalt Column with base and top sawn to parallel plains.
- .1 Polished Surface
- .2 Bear Pattern Engraving
- Bear pattern to be provided and scaled as shown in plans.
 - Finish with lithichrome paint.
- .3 Text Engraving
- Lettering to be provided and scaled as shown in plans.
 - Finish with lithichrome paint.
- .4 Rebar reinforcement
- .5 Laser cut bear claw pattern
- From C.1; grind edges to ensure smooth finish with no hazardous chips or protrusions.
 - Fasten to Basalt column as shown in plans using exterior grade adhesive appropriate for metal and rock adhesion.
- (C) Front Metal Collar Panel:
- 12mm thick Corten steel panel, cut and bend to shape, finish to be brushed (all sides).
 - Mechanically fasten to concrete foundation with no visible hardware on the face above grade.
 - Apply anti-Graffiti clear coat (all sides).
- .1 Laser Cut Pattern on Front Panel
- Laser cut bear claw pattern to be provided and scaled as shown in plans; grind edges to ensure smooth finish with no hazardous chips or protrusions.
 - Cut outs to be retained and fastened to back side of basalt column using exterior grade adhesive appropriate for metal and rock adhesion(See F).
- (D) Back Metal Collar Panel:
- 12mm thick Corten steel panel, cut and bend to shape.
 - Mechanically fasten to pile cap with no visible hardware on the face above grade.
 - Apply anti-Graffiti clear coat (all sides).
- (E) Top Soil / Adjacent Surface
- (F) Concrete Pile Cap
- Dimensions to be confirmed as per structural shop drawings.
- .1 Reinforcement
- (G) Structural Piles
- Dimensions to be confirmed through shop drawing process.
- (H) 100mm Granular Base on Compacted Subgrade compacted to 98% spd

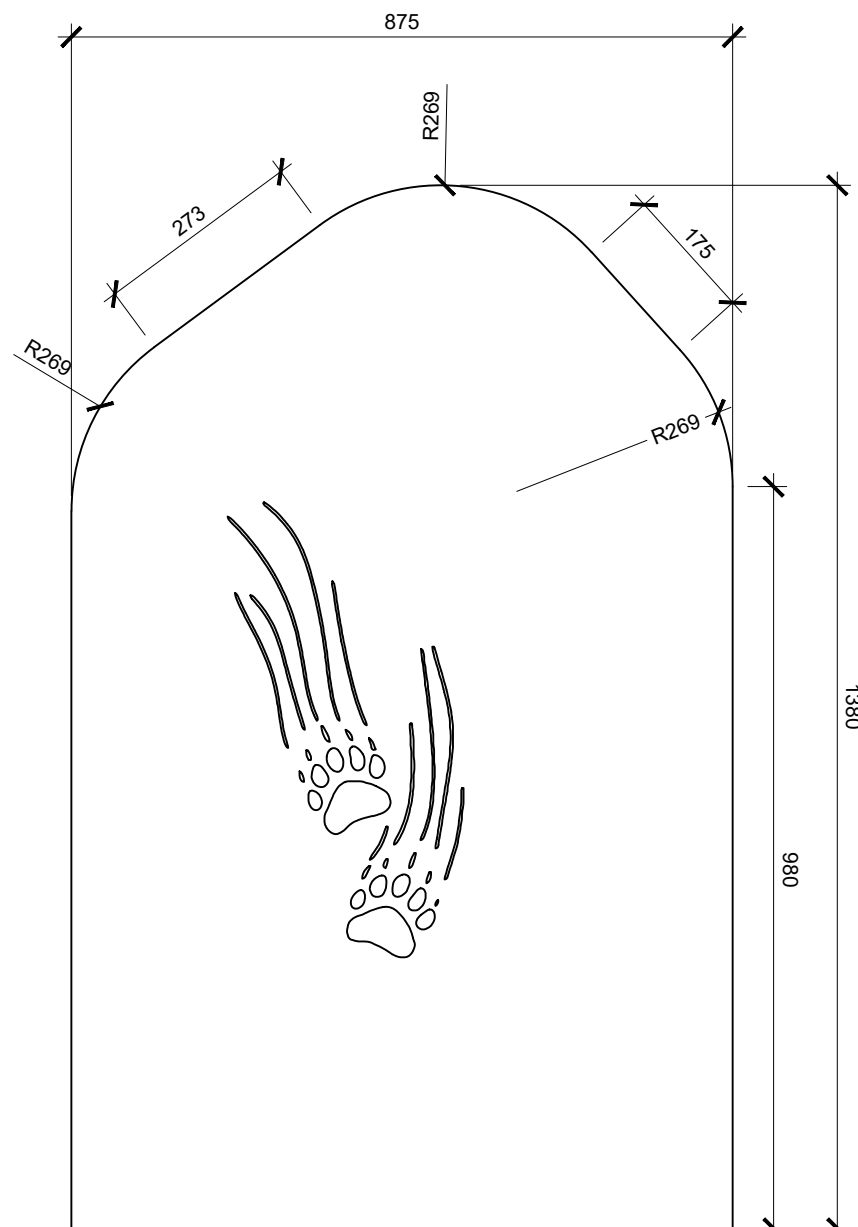
- Notes:
- Drawing shows design intent only. Signage vendor to provide engineered shop drawings sealed by a structural engineer for all components including footings for review and approval by Owner and/or Contract Administrator prior to fabrication.
 - Actual engraving content to be provided by Owner prior to fabrication.
 - All graphic elements for laser cutting to be provided by Owner via CAD file.
 - Signage vendor to verify all site dimensions and site conditions prior to fabrication.
 - Signage vendor to provide material samples to review finish prior to fabrication.
 - All dimensions are in millimeters unless otherwise noted.

Schedule B - Large Monument

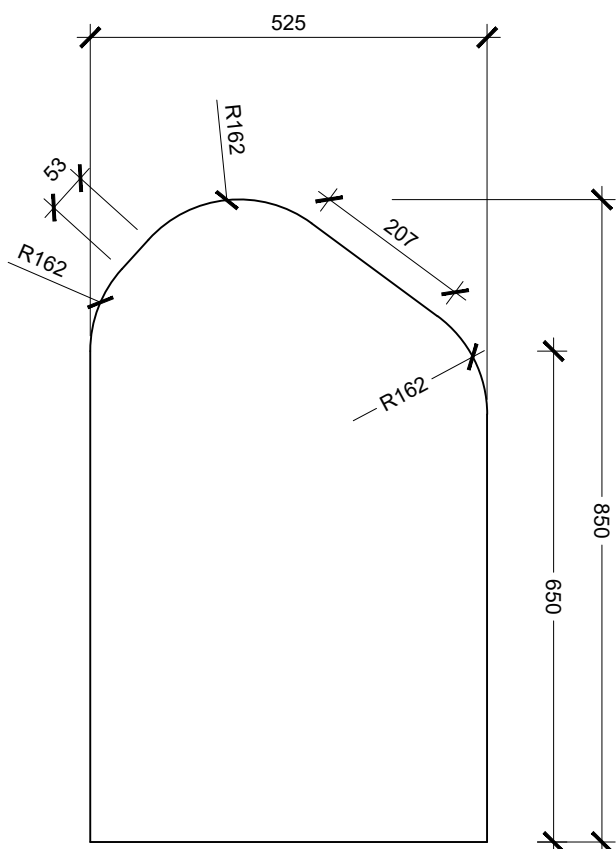
B.0	Site Preparation/Rehab	2,500.00
B.1	Supply & Install Concrete Footing	5,000.00
B.2	Supply & Install Basalt Column	4,600.00
B.3	Supply & Install Corten Steel Collars c/w laser cutouts & formed	3,000.00
B.4	Supply & Install Eagle Sculpture	16,000.00
B.5	Supply & Install Graphic Components/Etching	3,000.00
SUBTOTAL		\$34,100.00
15% DESIGN & ENGINEERING COSTS		5,115.00
30% CONTINGENCY		10,230.00
TOTAL SCHEDULE "B"		\$49,445.00



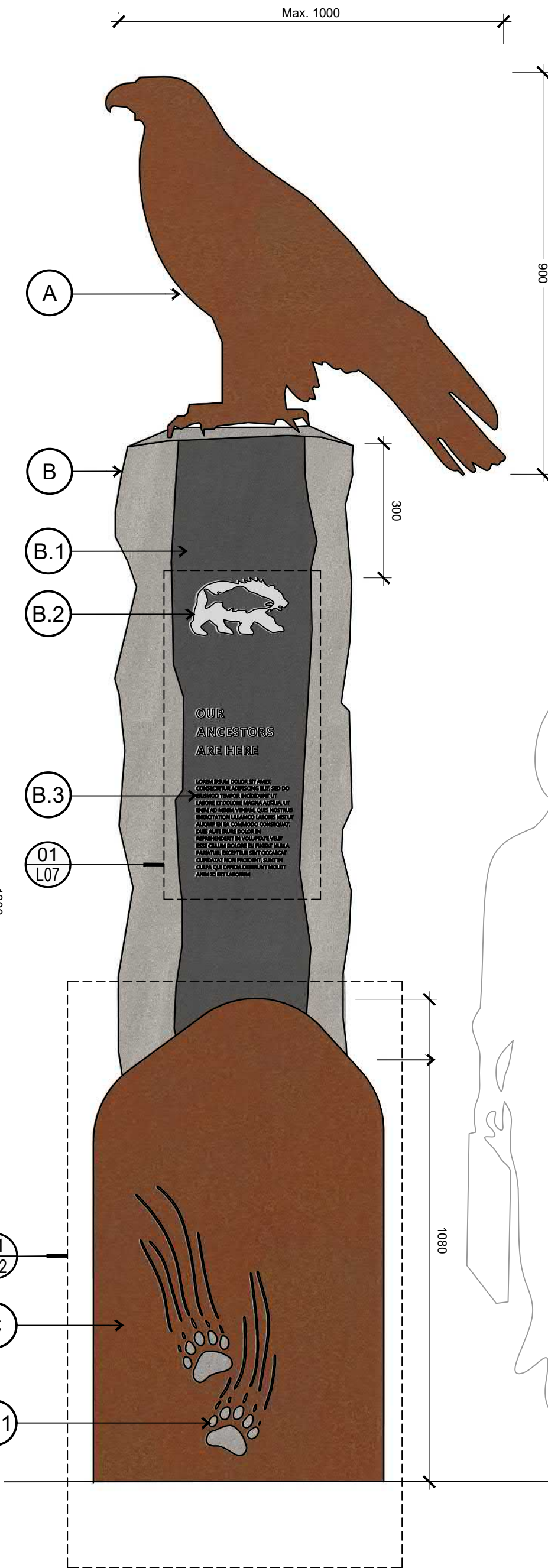
PLAN
SCALE 1:10



1 FRONT COLLAR LAYOUT
SCALE 1:10



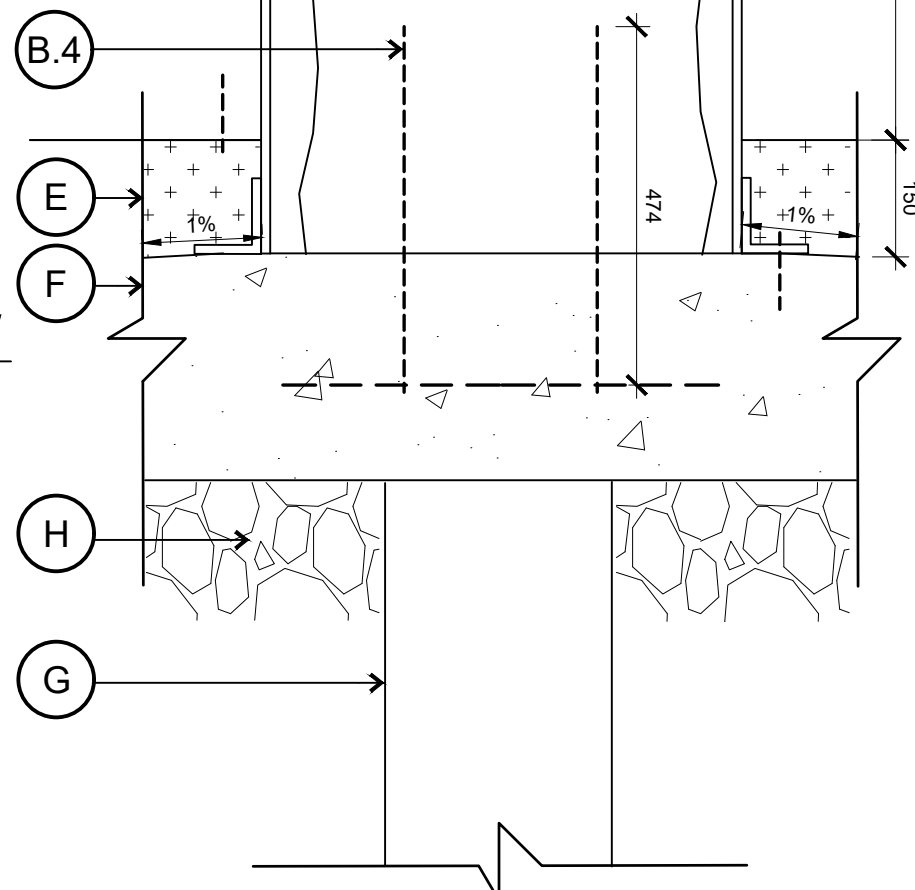
2 BACK COLLAR LAYOUT
SCALE 1:10



ELEVATION A - FRONT VIEW
SCALE 1:10

ELEVATION B - SIDE VIEW (RIGHT)
SCALE 1:10

ELEVATION C - BACK VIEW
SCALE 1:10



SECTION (RIGHT)
SCALE 1:10

ATTENTION
This drawing is prepared for the sole use of City of Quesnel
No representations of any kind are made by Urban Systems Ltd. or its employees to any party with whom Urban Systems Ltd. does not have a contract.
WARNING
Utilities or structures shown on this drawing were compiled from information supplied by various parties and may not be complete or accurate. Expose and conclusively confirm the location in the field all underground utilities and structures indicated on this drawing, all underground utilities in the area of the proposed work and any utilities or structures reasonably apparent from an inspection of the proposed work. Urban Systems Ltd. assumes no responsibility for loss or damage caused by third party negligence or failure to comply with the above.

SURVEY INFORMATION
Prepared by: Urban Systems Ltd
Coordinate System: NAD83
Compilation Date: March 2022

ISSUED FOR
FINAL REVIEW
JULY 07, 2022
urbansystems.ca

Professional Seals

#	Date	Issue / Revision	App
A	2022-03-31		REVIEW
B	2022-05-16		ISSUED FOR REVIEW
C	2022-07-07		FINAL REVIEW

CITY OF
Quesnel

URBAN
SYSTEMS
Scale
AS SHOWN
Quality Control by
Designed by
Drawn by

C.Larouche
S. McCoy
R.Ho

LHTAKO DENÉ CULTURAL
INTERPRETATION PROJECT
02 LARGE MONUMENT

Sheet Number 6 of 15
Project Number 1190.0199.01
Drawing Number L06
Revision C

ANSI expand D (34.00 x 22.00 Inches) 25mm

NOT FOR CONSTRUCTION

\\usurbansystems.com\projects\Projects_KAM\11900\1990\1D-Design\CAD\20_PROD\SET 1\L-11900\1990-1-Interpretive Project.dwg, SML MON, 2022-07-07 02:19 pm rho

LEGEND

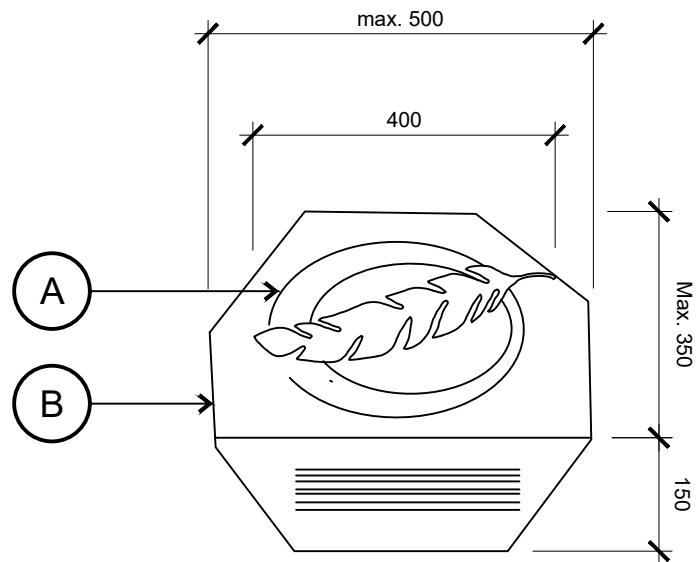
- (A) Metal Sculpture:
- By others.
 - Mechanically fasten onto Basalt Column. No visible hardware on the face.
- (B) Basalt Column:
- Max. 500mm diameter Black Tusk Basalt Column with base and top sawn to parallel plains.
 - Front face sawn at angle specified in plan and section.
- .1 Polished Surface
- .2 Bear Pattern Engraving
- Bear pattern to be provided and scaled as shown in plans.
 - Finish with lithichrome paint.
- .3 Text Engraving
- Lettering to be provided and scaled as shown in plans.
 - Finish with lithichrome paint.
- (C) Top Soil / Adjacent Surface
- (D) Subgrade compacted to 98% spd

Notes:

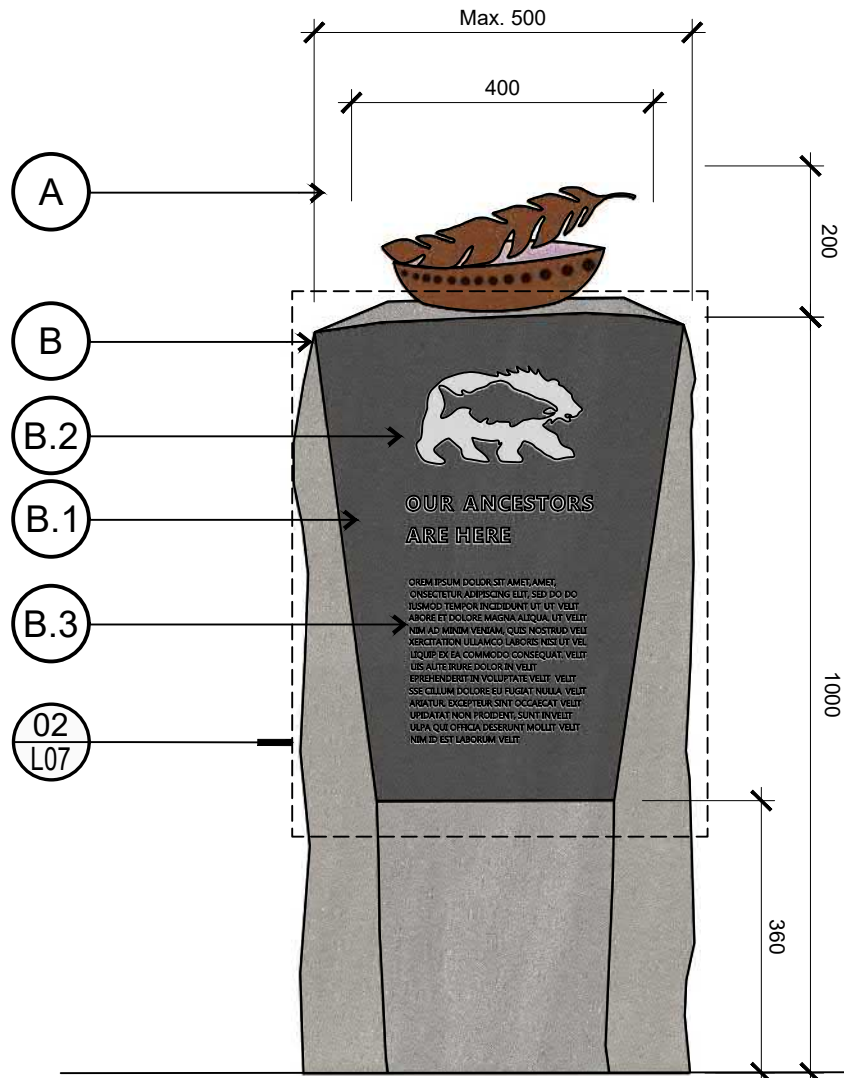
- Drawing shows design intent only. Signage vendor to provide engineered shop drawings sealed by a structural engineer for all components including footings for review and approval by Owner and/or Contract Administrator prior to fabrication.
- Actual engraving content to be provided by Owner prior to fabrication.
- All graphic elements for laser cutting to be provided by Owner via CAD file.
- Signage vendor to verify all site dimensions and site conditions prior to fabrication.
- Signage vendor to provide material samples to review finish prior to fabrication.
- All dimensions are in millimeters unless otherwise noted.

Schedule C - Small Monument

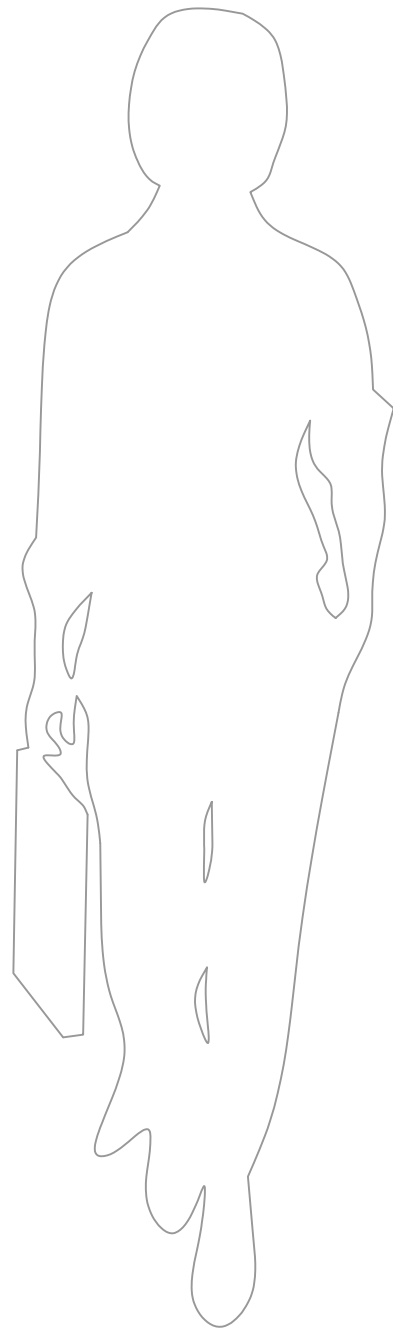
C.0	Site Preparation/Rehab	1,500.00
C.1	Supply & Install Basalt Column w/ Subgrade Materi:	1,800.00
C.2	Supply & Install Abalone Shell & Feather, Fasteners	5,000.00
C.3	Supply & Install Graphic Components/Engraving	2,500.00
SUBTOTAL		\$10,800.00
15% DESIGN & ENGINEERING COSTS		1,620.00
30% CONTINGENCY		3,240.00
TOTAL SCHEDULE "C"		\$15,660.00



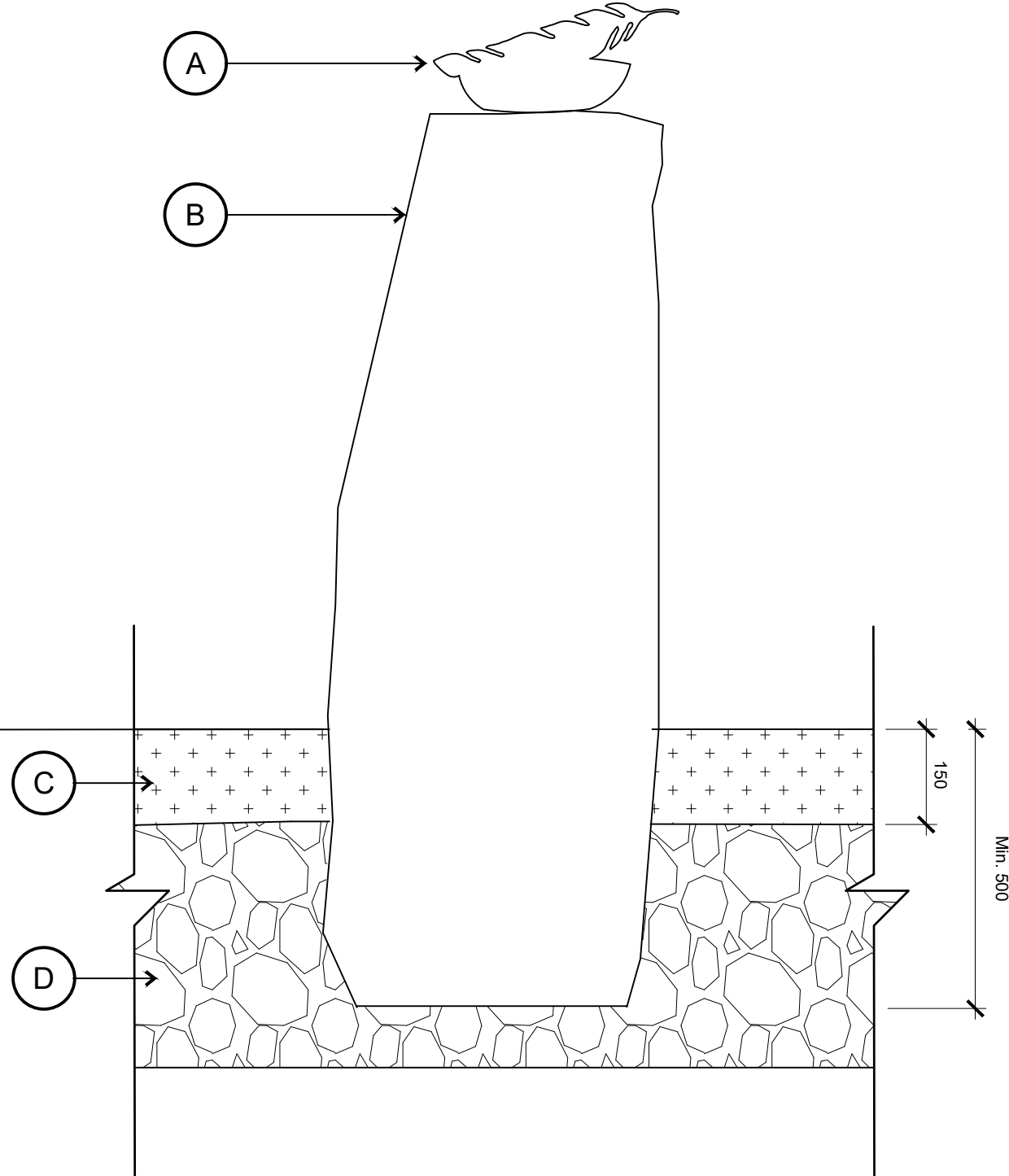
PLAN
SCALE 1:10



ELEVATION A - FRONT VIEW
SCALE 1:10



ELEVATION B - SIDE VIEW (RIGHT)
SCALE 1:10



SECTION (RIGHT)
SCALE 1:10

ATTENTION
This drawing is prepared for the sole use of City of Quesnel
No representations of any kind are made by Urban Systems Ltd. or its employees
to any party with whom Urban Systems Ltd. does not have a contract.

WARNING
Utilities or structures shown on this drawing were compiled from information
supplied by various parties and may not be complete or accurate. Expose and
conclusively confirm the location in the field all underground utilities and structures
indicated on this drawing; all underground utilities in the area of the proposed work
and any utilities or structures reasonably apparent from an inspection of the
proposed work. Urban Systems Ltd. assumes no responsibility for loss or damage
caused by third party negligence or failure to comply with the above.

SURVEY INFORMATION
Prepared by: Urban Systems Ltd
Coordinate System: NAD83
Compilation Date: March 2022

**ISSUED FOR
FINAL REVIEW**
JULY 07, 2022
urbansystems.ca

Professional Seals

#	Date	Issue / Revision	App
A	2022-03-31		REVIEW
B	2022-05-16		ISSUED FOR REVIEW
C	2022-07-07		FINAL REVIEW

CITY OF
Quesnel

**URBAN
SYSTEMS**

Scale
AS SHOWN

Quality Control by
Designed by
Drawn by

C. Larouche
S. McCoy
R. Ho

**Lhtako Dene Cultural Interpretive
Plan
SMALL MONUMENT**

Sheet Number 7 of 15
Project Number 1190.0199.01 Drawing Number L07 Revision C

ANSI expand D (34.00 x 22.00 Inches) 25mm

NOT FOR CONSTRUCTION

\\us1urban-systems.com\projects\Projects_KAM\11900\1990\1D-Design\CAD\20_PROD\SET 1\L-11900\1990\1 - Interpretive Project.dwg, LRG INT, 2022-07-07 02:19 pm mo

LEGEND

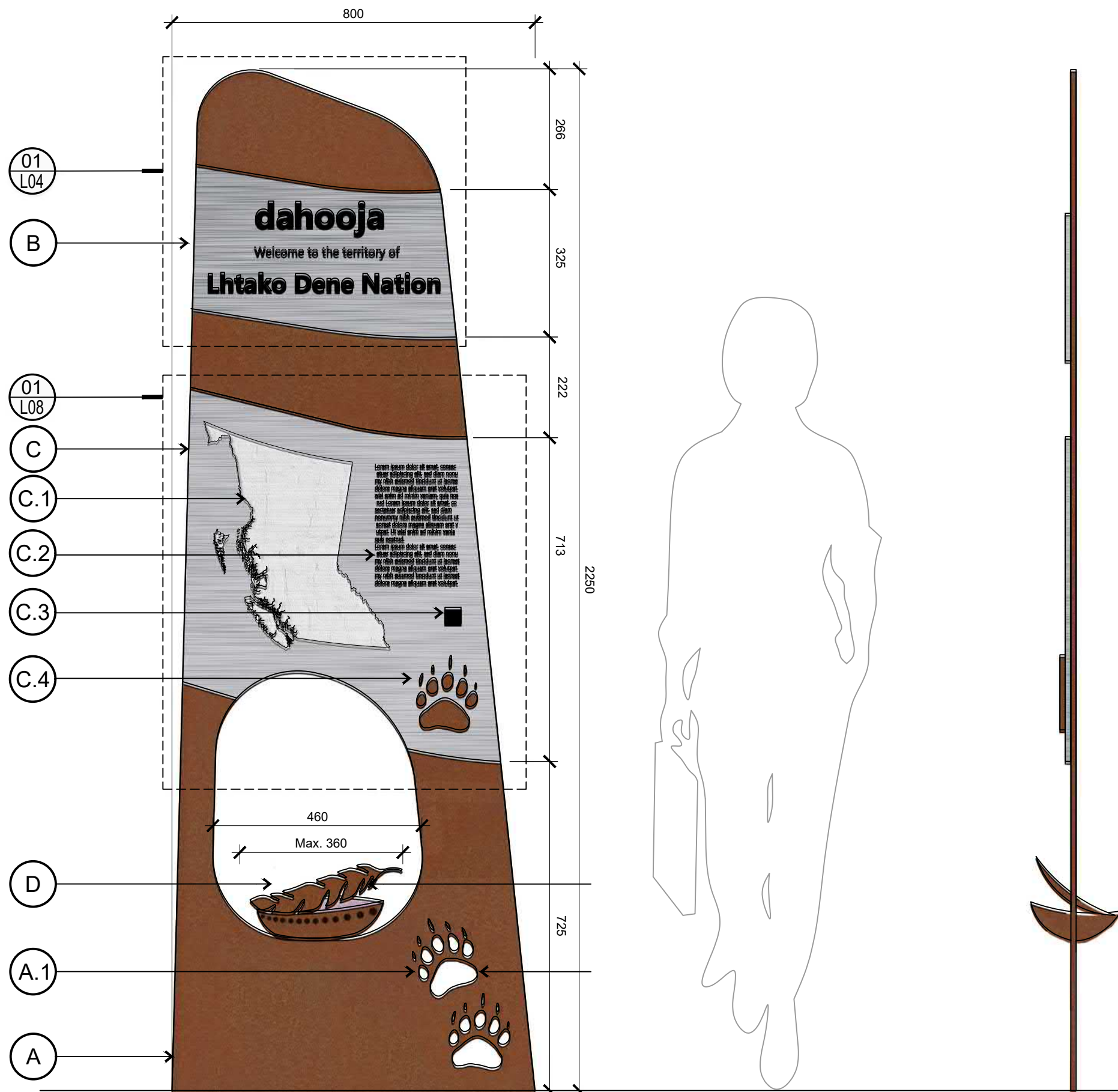
- (A) Panel 1: Base Panel
- 12mm thick Corten steel panel, cut to shape.
 - Mechanically fasten to concrete foundation with no visible hardware on the face above grade.
 - Apply anti-Graffiti clear coat (all sides).
1. Laser Cut Pattern
- Laser cut bear claw pattern to be provided and scaled as shown in plans; grind edges to ensure smooth finish with no hazardous chips or protrusions.
 - Cut outs to be retained and fastened to Information Panel
- (B) Panel 2: Title Panel
- 12mm thick aluminum steel panel, cut to shape, finish to be brushed aluminum (all sides).
 - Digitally print letters with exterior grade inks.
 - "dahooja" and "Lhtako Dene Nation" to use Ebrima Bold as standard font style.
 - "Welcome to the territory of to" to use Ebrima as standard font style.
 - No italics are permitted, characters height, space and case as per plans.
 - Apply anti-Graffiti clear coat (all sides).
- (C) Panel 3: Information Panel
- 12mm thick aluminum steel panel, cut to shape, finish to be brushed aluminum (all sides).
 - Apply anti-Graffiti clear coat (all sides).
 - Fasten to Sign Panel. Layout and type of fasteners to be proposed via shop drawings.
1. Print map onto treated aluminum surface using sublimation process
2. Digitally print letters with exterior grade inks
- Body text to use Ebrima as standard font style.
3. Digitally print QR code with exterior grade inks
4. Claw pattern
- From A.1; grind edges to ensure smooth finish with no hazardous chips or protrusions.
 - Fasten to Information Panel as shown in plans using adhesive appropriate for metal adhesions.
- (D) Metal Sculpture:
- By others.
 - Mechanically fasten onto Base Panel. No visible hardware on the face.
- (E) Top Soil / Adjacent Surface
- (F) Concrete Pile Cap
- Dimensions to be confirmed as per structural shop drawings.
- (G) Structural Piles
- Dimensions to be confirmed through shop drawing process.
- (H) 100mm Granular Base on Compacted Subgrade compacted to 98% spd

Notes:

- Drawing shows design intent only. Signage vendor to provide engineered shop drawings sealed by a structural engineer for all components including footings for review and approval by Owner and/or Contract Administrator prior to fabrication.
- Actual sign content to be provided by Owner prior to fabrication.
- All graphic elements for laser cutting to be provided by Owner via CAD file.
- Signage vendor to verify all site dimensions and site conditions prior to fabrication.
- Signage vendor to provide material samples to review finish prior to fabrication.
- All dimensions are in millimeters unless otherwise noted.

Schedule D - Large Vertical Interpretive Sign

D.0	Site Preparation/Rehab	2,000.00
D.1	Supply & Install Concrete Footing	4,000.00
D.2	Supply & Install Signage Panels (Corten & SS)	4,450.00
D.3	Supply & Install Abalone Shell & Feather, Fastener	5,000.00
D.4	Supply & Install Graphic Components	1,000.00
SUBTOTAL		\$16,450.00
15% DESIGN & ENGINEERING COSTS		2,467.50
30% CONTINGENCY		4,935.00
TOTAL SCHEDULE "D"		\$23,852.50

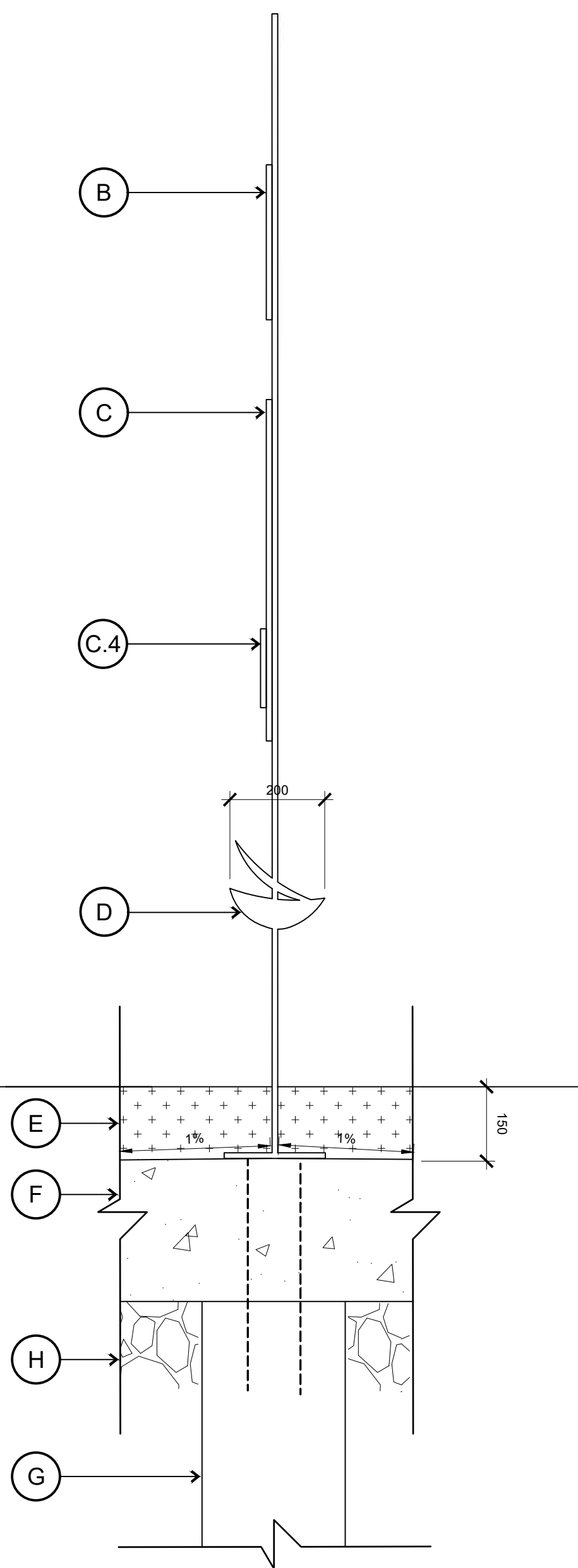


ELEVATION A - FRONT VIEW

SCALE 1:10

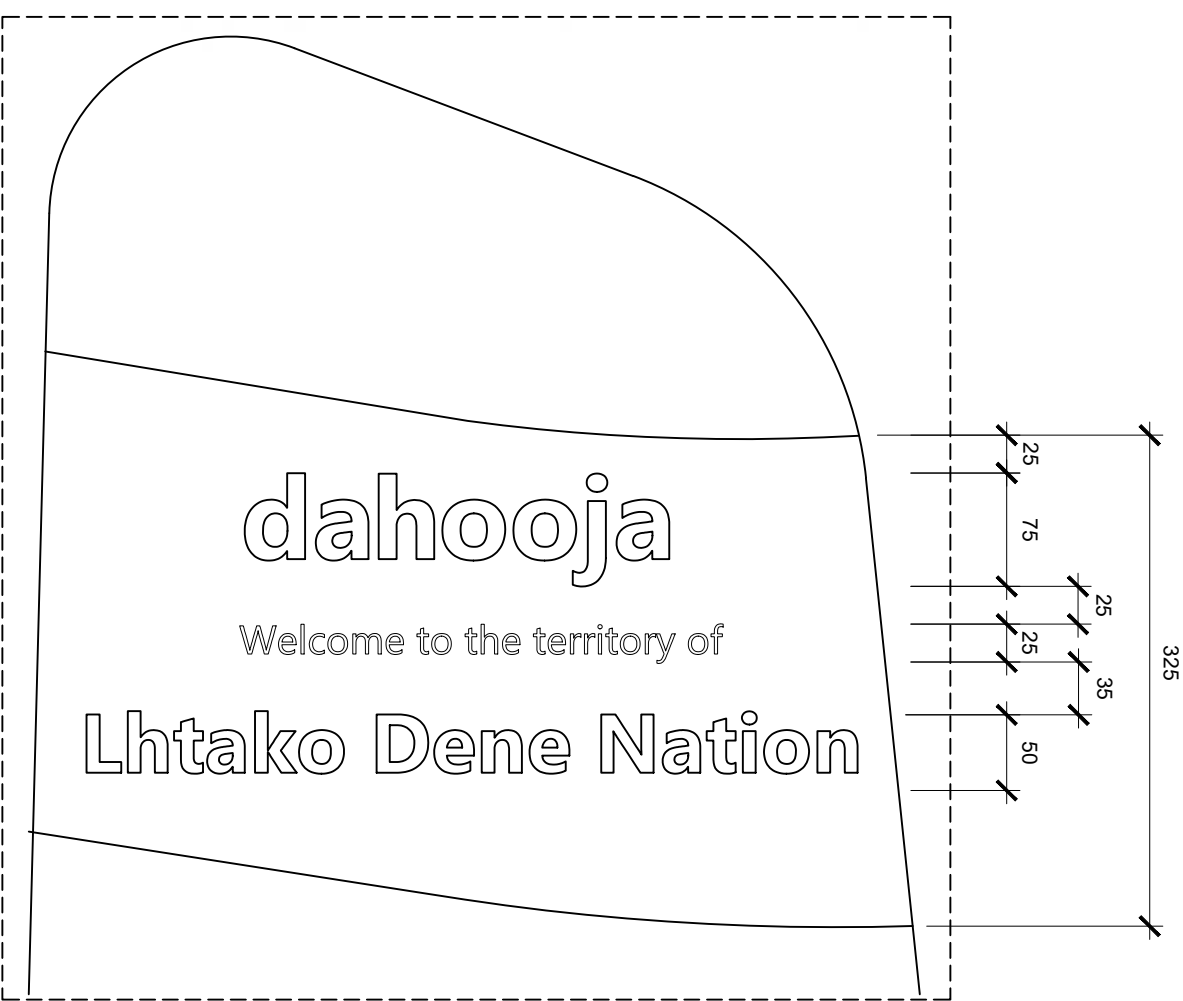
ELEVATION B - SIDE VIEW (RIGHT)

SCALE 1:10



SECTION (RIGHT)

SCALE 1:10



LARGE INTERPRETIVE SIGN LAYOUT

SCALE 1:5

ATTENTION
This drawing is prepared for the sole use of City of Quesnel.
No representations of any kind are made by Urban Systems Ltd. or its employees to any party with whom Urban Systems Ltd. does not have a contract.
WARNING
Utilities or structures shown on this drawing were compiled from information supplied by various parties and may not be complete or accurate. Expose and conclusively confirm the location in the field all underground utilities and structures indicated on this drawing, all underground utilities in the area of the proposed work and any utilities or structures reasonably apparent from an inspection of the proposed work. Urban Systems Ltd. assumes no responsibility for loss or damage caused by third party negligence or failure to comply with the above.

SURVEY INFORMATION
Prepared by: Urban Systems Ltd
Coordinate System: NAD83
Compilation Date: March 2022

ISSUED FOR
FINAL REVIEW
JULY 07, 2022
urbansystems.ca

Professional Seals

#	Date	Issue / Revision	App
A	2022-03-31		REVIEW
B	2022-05-16		ISSUED FOR REVIEW
C	2022-07-07		FINAL REVIEW

CITY OF
Quesnel

URBAN
SYSTEMS

Scale
AS SHOWN

Quality Control by
Designed by
Drawn by

C. Larouche
S. McCoy
R. Ho

Lhtako Dene Cultural Interpretive
Plan
LARGE VERTICAL INTERPRETIVE SIGN

Sheet Number 8 of 15
Project Number 1190.0199.01 Drawing Number L08 Revision C

ANSI expand D (34.00 x 22.00 inches) 25mm

NOT FOR CONSTRUCTION

\\usl-urban-systems.com\projects\Projects_KAM\1190\0199\01\1D-Design\CAD\20_PROD\SET 1\L-1190019901 - Interpretive Project.dwg, SML INT, 2022-07-07 02:19 pm rto

LEGEND

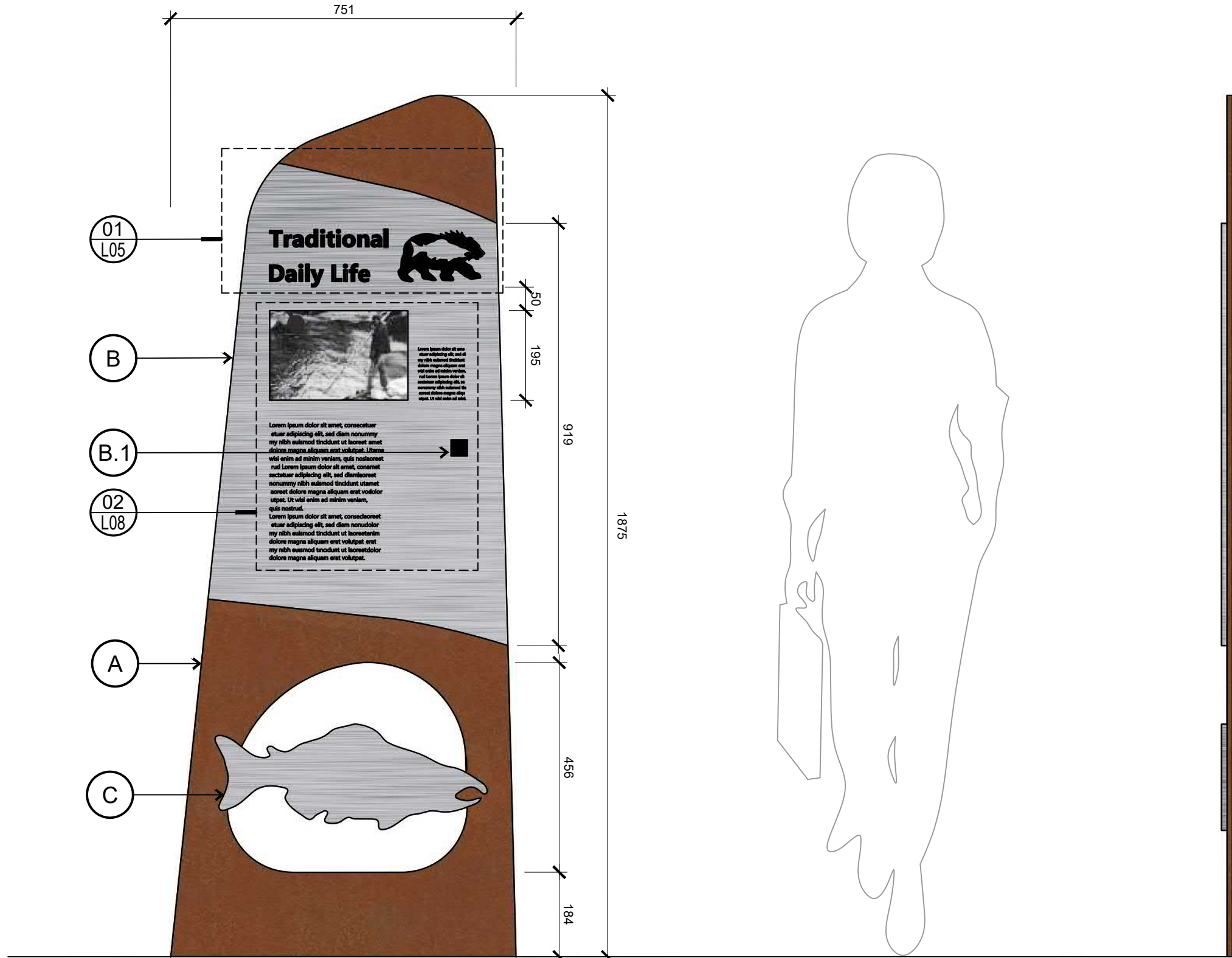
- A** Panel 1: Base Panel
- 12mm thick Corten steel panel, cut to shape.
 - Cast into underground concrete footing.
 - Apply anti-Graffiti clear coat (all sides).
1. Laser Cut Pattern
- Laser cut bear claw pattern to be provided and scaled as shown in plans; grind edges to ensure smooth finish with no hazardous chips or profusions.
 - Cut outs to be retained and fastened to Information Panel
- B** Panel 2: Information Panel
- 12mm thick aluminum panel, cut to shape, finish to be brushed aluminum (all sides).
 - Digitally print letters with exterior grade inks.
 - "Traditional Daily Life" to use Ebrima Bold as standard font style.
 - Body Text and Caption to use Ebrima as standard font style.
 - No italics are permitted, characters height, space and case as per plans.
 - Apply anti-Graffiti clear coat (all sides).
 - Fasten to Base Panel. Layout and type of fasteners to be proposed via shop drawings.
1. Digitally print QR code with exterior grade inks.
- C** Laser Cut Pattern
- 12mm thick aluminuml panel, cut to shape, finish to be brushed aluminum (all sides).
 - Salmon pattern to be provided and scaled as shown in plans
 - Apply anti-Graffiti clear coat (all sides).
 - Fasten to Base Panel. Layout and type of fasteners to be proposed via shop drawings.
- E** Top Soil / Adjacent Surface
- F** Concrete Pile Cap
- Dimensions to be confirmed as per structural shop drawings.
- G** Structural Piles
- Dimensions to be confirmed through shop drawing process.
- H** 100mm Granular Base on Compacted Subgrade compacted to 98% spd

Notes:

- Drawing shows design intent only. Signage vendor to provide engineered shop drawings sealed by a structural engineer for all components including footings for review and approval by Owner and/or Contract Administrator prior to fabrication.
- Actual sign content to be provided by Owner prior to fabrication.
- All graphic elements for laser cutting to be provided by Owner via CAD file.
- Signage vendor to verify all site dimensions and site conditions prior to fabrication.
- Signage vendor to provide material samples to review finish prior to fabrication.
- All dimensions are in millimeters unless otherwise noted.

Schedule E - Medium Vertical Interpretive Sign

E.0	Site Preparation/Rehab	1,500.00
E.1	Supply & Install Concrete Footing	3,500.00
E.2	Supply & Install Signage Panels (Corten & SS)	4,450.00
E.3	Supply & Install Graphic Components	1,000.00
SUBTOTAL		\$10,450.00
15% DESIGN & ENGINEERING COSTS		1,567.50
30% CONTINGENCY		3,135.00
TOTAL SCHEDULE "E"		\$15,152.50

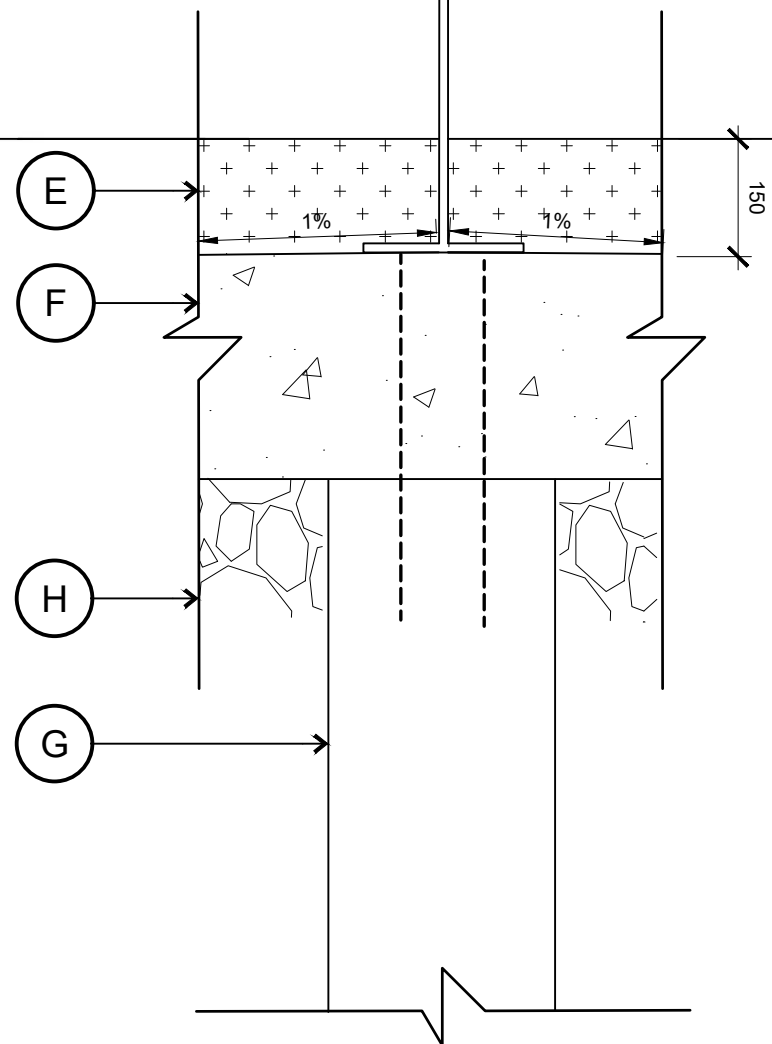


ELEVATION A - FRONT VIEW

SCALE 1:10

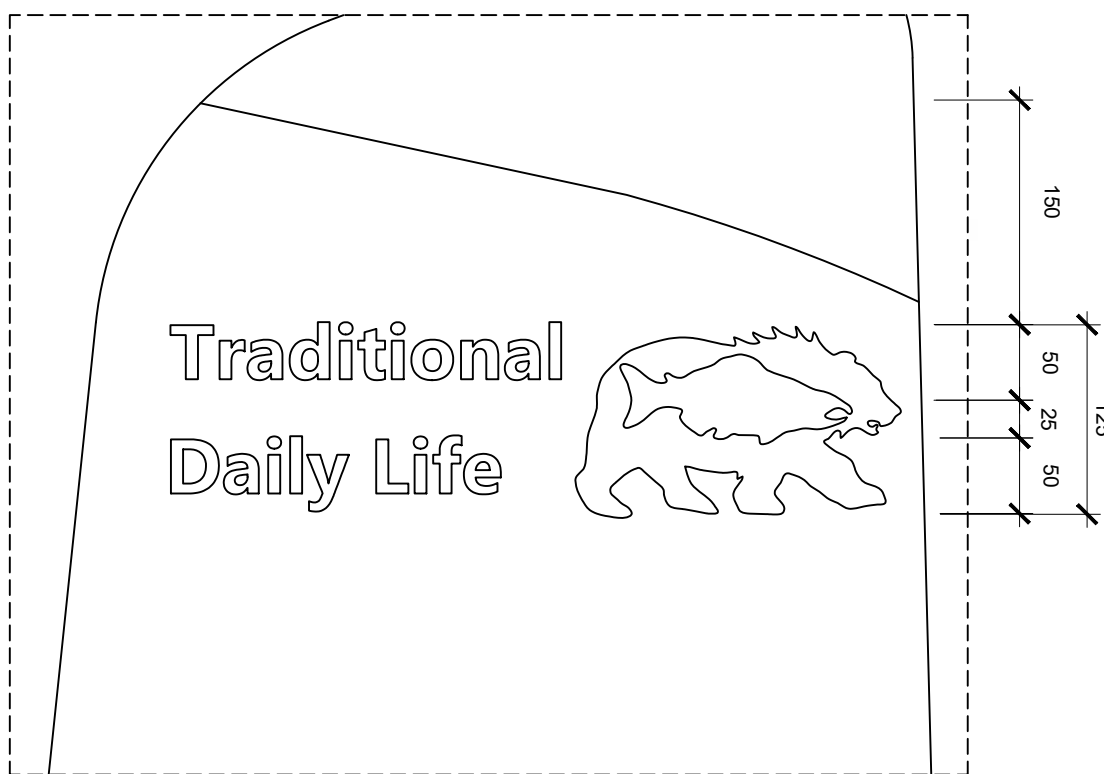
ELEVATION B - SIDE VIEW (RIGHT)

SCALE 1:10



SECTION (RIGHT)

SCALE 1:10



MEDIUM INTERPRETIVE SIGN LAYOUT

SCALE 1:5

ATTENTION
This drawing is prepared for the sole use of City of Quesnel.
No representations of any kind are made by Urban Systems Ltd. or its employees to any party with whom Urban Systems Ltd. does not have a contract.

WARNING
Utilities or structures shown on this drawing were compiled from information supplied by various parties and may not be complete or accurate. Expose and conclusively confirm the location in the field all underground utilities and structures indicated on this drawing. all underground utilities in the area of the proposed work and any utilities or structures reasonably apparent from an inspection of the proposed work. Urban Systems Ltd. assumes no responsibility for loss or damage caused by third party negligence or failure to comply with the above.

SURVEY INFORMATION
Prepared by: Urban Systems Ltd
Coordinate System: NAD83
Compilation Date: March 2022

**ISSUED FOR
FINAL REVIEW**
JULY 07, 2022
urbansystems.ca

Professional Seals

#	Date	Issue / Revision	App
A	2022-03-31		REVIEW
B	2022-05-16		ISSUED FOR REVIEW
C	2022-07-07		FINAL REVIEW

CITY OF
Quesnel

**URBAN
SYSTEMS**

Scale
AS SHOWN

Quality Control by
Designed by
Drawn by

C.Larouche
S. McCoy
R. Ho

**Lhtako Dene Cultural Interpretive
Plan**

MEDIUM VERTICAL INTERPRETIVE SIGN

Sheet Number 9 of 15
Project Number 1190.0199.01
Drawing Number L09
Revision C

ANSI expand D (34.00 x 22.00 Inches) 25mm

NOT FOR CONSTRUCTION

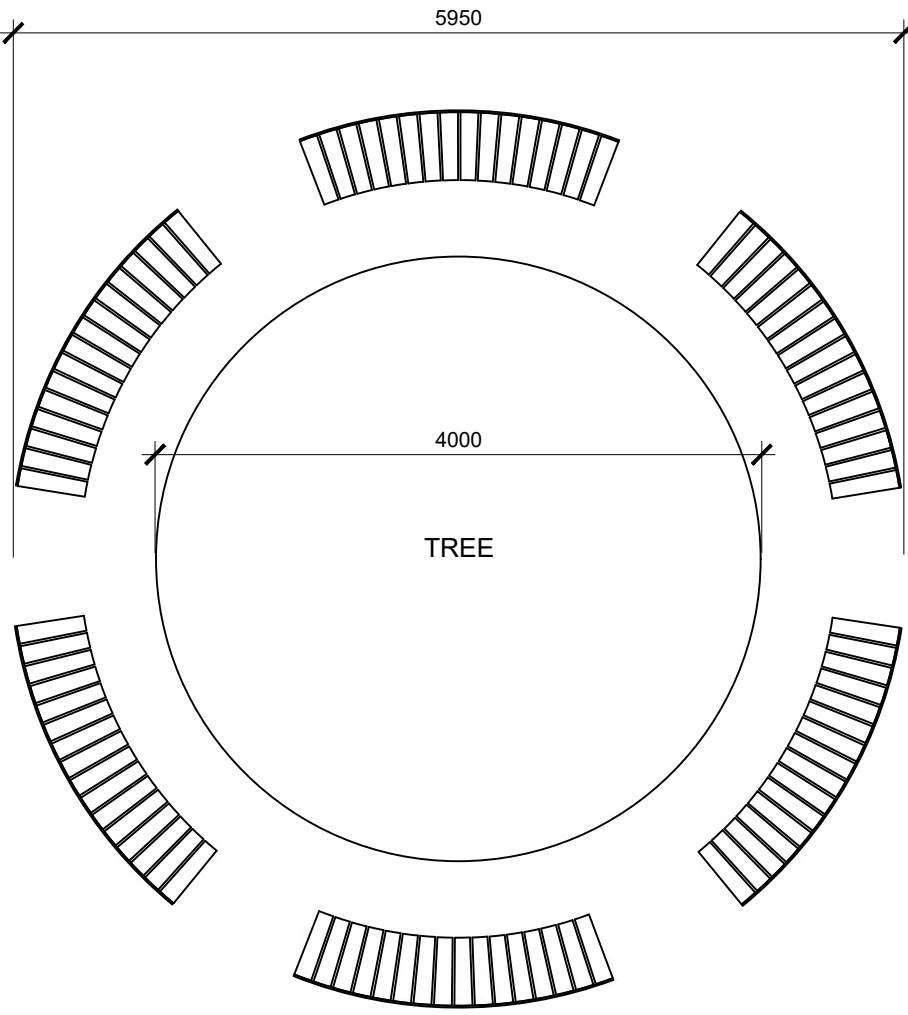
\\us1urban-systems.com\projects\Projects_KAM\119001990\1D-Design\CAD\20_PROD\SET 1\L-1190019901 - Interpretive Project.dwg, BENCH, 2022-07-07 02:19 pm rto

LEGEND

- A** Wooden Seat
- 50 x 140mm Cedar Board, cut to length as per plans, spaced 15mm apart.
 - Sand and seal all cut ends. Finish surface with appropriate exterior, semi-transparent UV and waterproof wood sealer.
 - Mechanically fasten into Gabion Unit. Counter sink all screws.
- B** Laser Cut Panel
- 12mm thick Corten steel panel, cut and bend to shape.
 - Laser cut feather patterns to be provided and scaled as shown in plans; grind edges to ensure smooth finish with no hazardous chips or protrusions.
 - Apply anti-Graffiti clear coat (all sides).
 - Mechanically fasten into Gabion Unit. No visible hardware on the face.
- C** Gabion Unit
- Weld frame together with clean through welds. Grind all welds flat.
 - Touch-up all welds as required with galv. paint.
 - 188 guage wire mesh and 30mm angle.
- D** Gabion Fill Material
- 150-200mm basalt rock as per Welcome Sign.

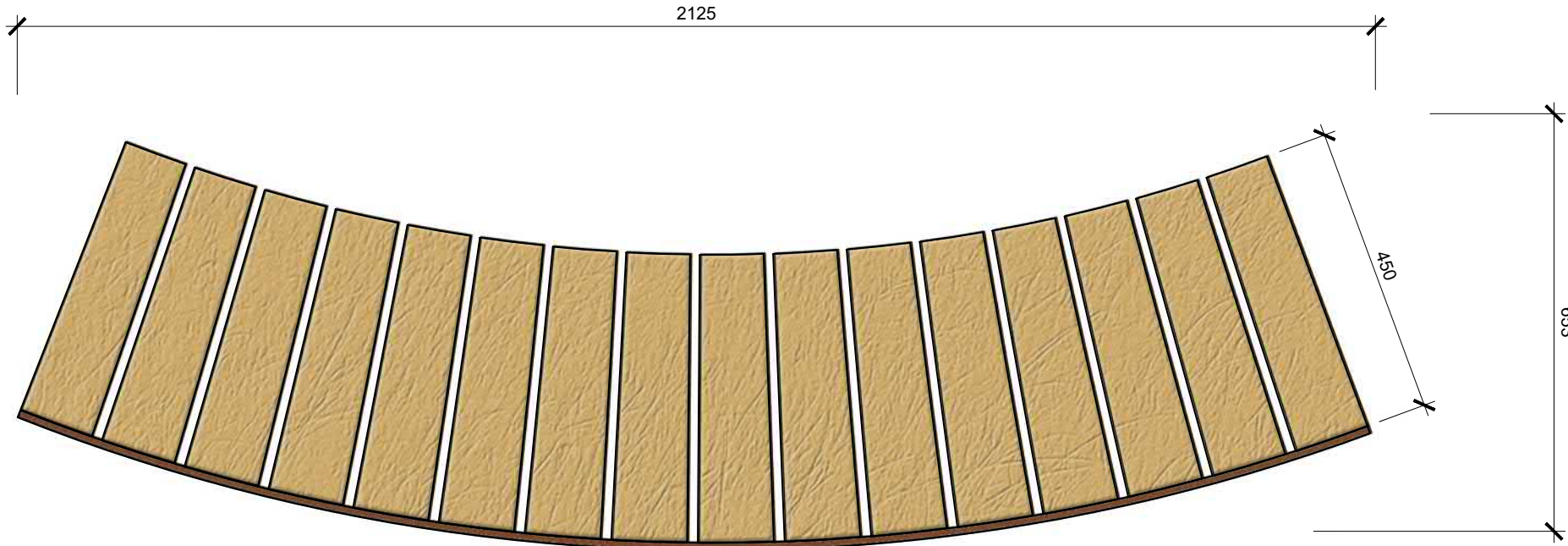
- Notes:
1. Drawing shows design intent only. Vendor to provide engineered shop drawings sealed by a structural engineer for all components including footings for review and approval by Owner and/or Contract Administrator prior to fabrication.
 2. All graphic elements for laser cutting to be provided by Owner via CAD file.
 3. Vendor to verify all site dimensions and site conditions prior to fabrication.
 4. Vendor to provide material samples to review finish prior to fabrication.
 5. Radius of bench is designed to fit around a 3.5 diameter tree. The radius can be adjusted to fit site conditions through the shop drawing process.
 6. All dimensions are in millimeters unless otherwise noted.

Schedule G - Round Gabion Bench		
G.0	Site Preparation/Rehab	800.00
G.1	Supply & Install Aggregate Pad	1,200.00
G.2	Supply & Install Gabion Frame & Rock Fill	3,000.00
G.3	Supply & Install Corten Laser Cut Panel	2,200.00
G.4	Supply & Install Wood Components	1,000.00
SUBTOTAL		\$8,200.00
15% DESIGN & ENGINEERING COSTS		1,230.00
30% CONTINGENCY		2,460.00
TOTAL SCHEDULE "G"		\$11,890.00



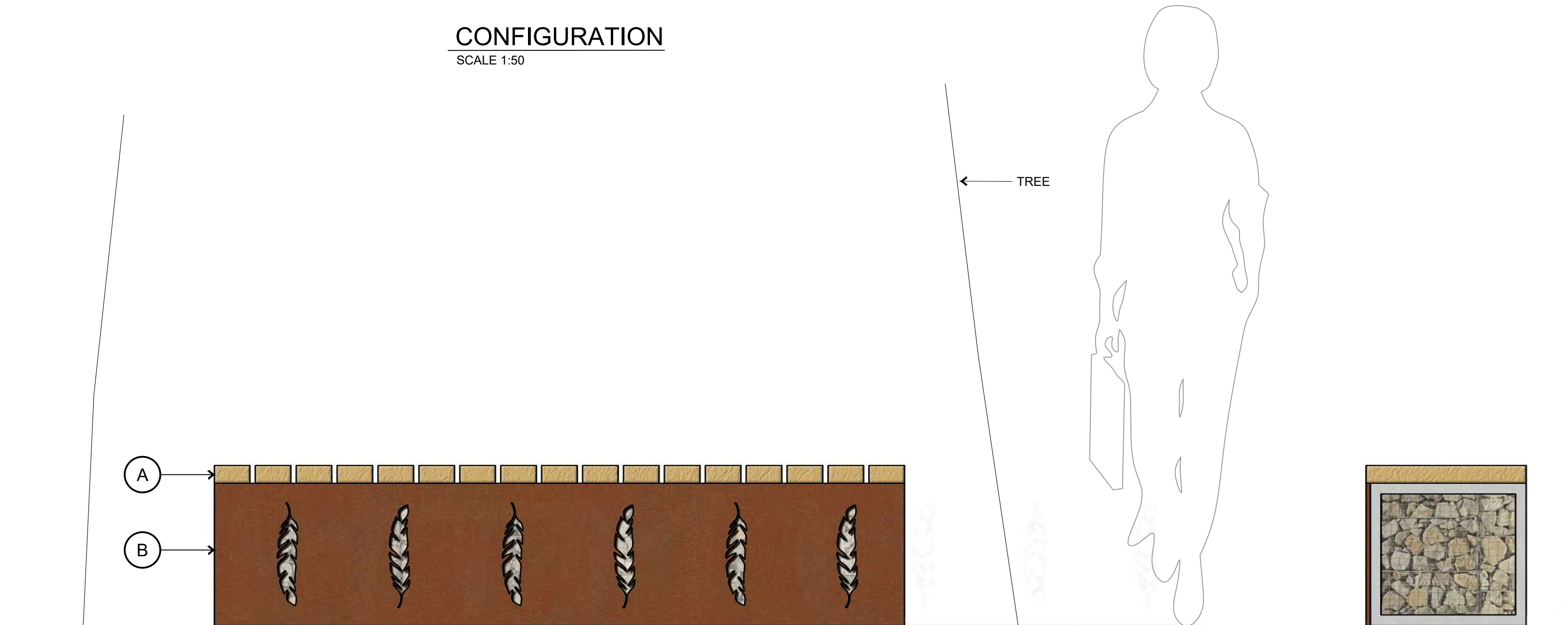
CONFIGURATION

SCALE 1:50



PLAN

SCALE 1:10

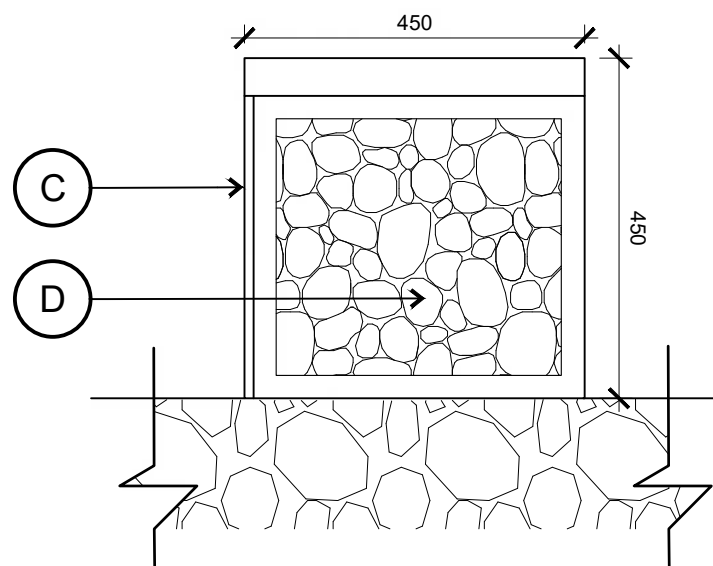


ELEVATION A - FRONT VIEW

SCALE 1:10

ELEVATION B - SIDE VIEW (RIGHT)

SCALE 1:10



SECTION - RIGHT

SCALE 1:10

ATTENTION
This drawing is prepared for the sole use of City of Quesnel.
No representations of any kind are made by Urban Systems Ltd. or its employees to any party with whom Urban Systems Ltd. does not have a contract.

WARNING
Utilities or structures shown on this drawing were compiled from information supplied by various parties and may not be complete or accurate. Expose and conclusively confirm the location in the field all underground utilities and structures indicated on this drawing. all underground utilities in the area of the proposed work and any utilities or structures reasonably apparent from an inspection of the proposed work. Urban Systems Ltd. assumes no responsibility for loss or damage caused by third party negligence or failure to comply with the above.

SURVEY INFORMATION
Prepared by: Urban Systems Ltd
Coordinate System: NAD83
Compilation Date: March 2022

**ISSUED FOR
FINAL REVIEW**
JULY 07, 2022
urbansystems.ca

Professional Seals

#	Date	Issue / Revision	App
A	2022-03-31		REVIEW
B	2022-05-16		ISSUED FOR REVIEW
C	2022-07-07		FINAL REVIEW

CITY OF
Quesnel

**URBAN
SYSTEMS**

Scale
AS SHOWN

Quality Control by
Designed by
Drawn by

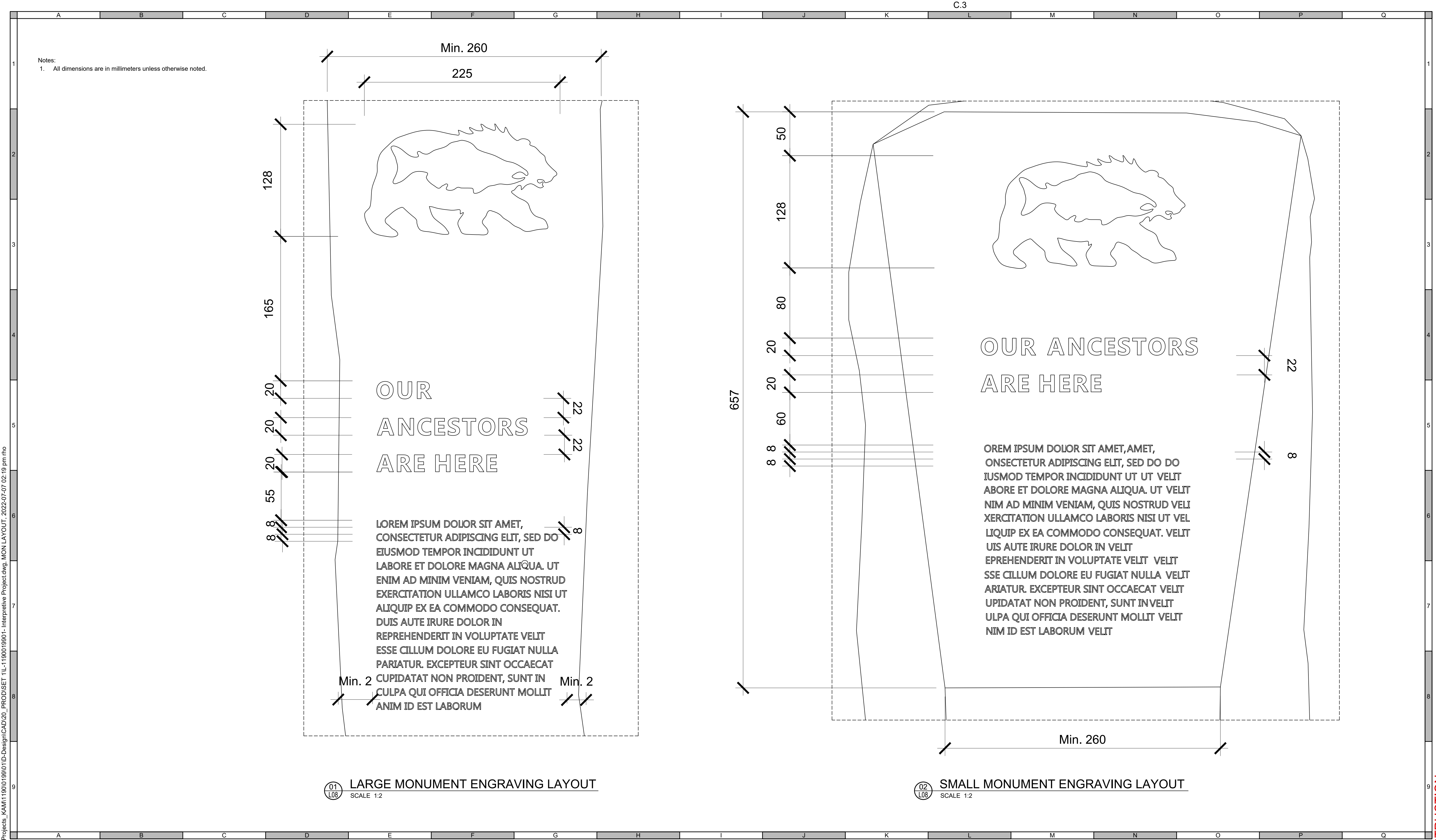
U. Systems
S. McCoy
R. Ho

**Lhtako Dene Cultural Interpretive
Plan**
ROUND GABION BENCH

Sheet Number 11 of 15
Project Number 1190.0199.01
Drawing Number L11
Revision C

ANSI expand D (34.00 x 22.00 Inches) 25mm

NOT FOR CONSTRUCTION



ATTENTION
This drawing is prepared for the sole use of City of Quesnel
No representations of any kind are made by Urban Systems Ltd. or its employees to any party with whom Urban Systems Ltd. does not have a contract.
WARNING
Utilities or structures shown on this drawing were compiled from information supplied by various parties and may not be complete or accurate. Expose and conclusively confirm the location in the field all underground utilities and structures indicated on this drawing. all underground utilities in the area of the proposed work and any utilities or structures reasonably apparent from an inspection of the proposed work. Urban Systems Ltd. assumes no responsibility for loss or damage caused by third party negligence or failure to comply with the above.

SURVEY INFORMATION
Prepared by: Urban Systems Ltd
Coordinate System: NAD83
Compilation Date: March 2022

**ISSUED FOR
FINAL REVIEW**
JULY 07, 2022
urbansystems.ca

Professional Seals

#	Date	Issue / Revision	App
A	2022-03-31		REVIEW
B	2022-05-16		ISSUED FOR REVIEW
C	2022-07-07		FINAL REVIEW



**URBAN
SYSTEMS**

Scale AS SHOWN

Quality Control by
Designed by
Drawn by

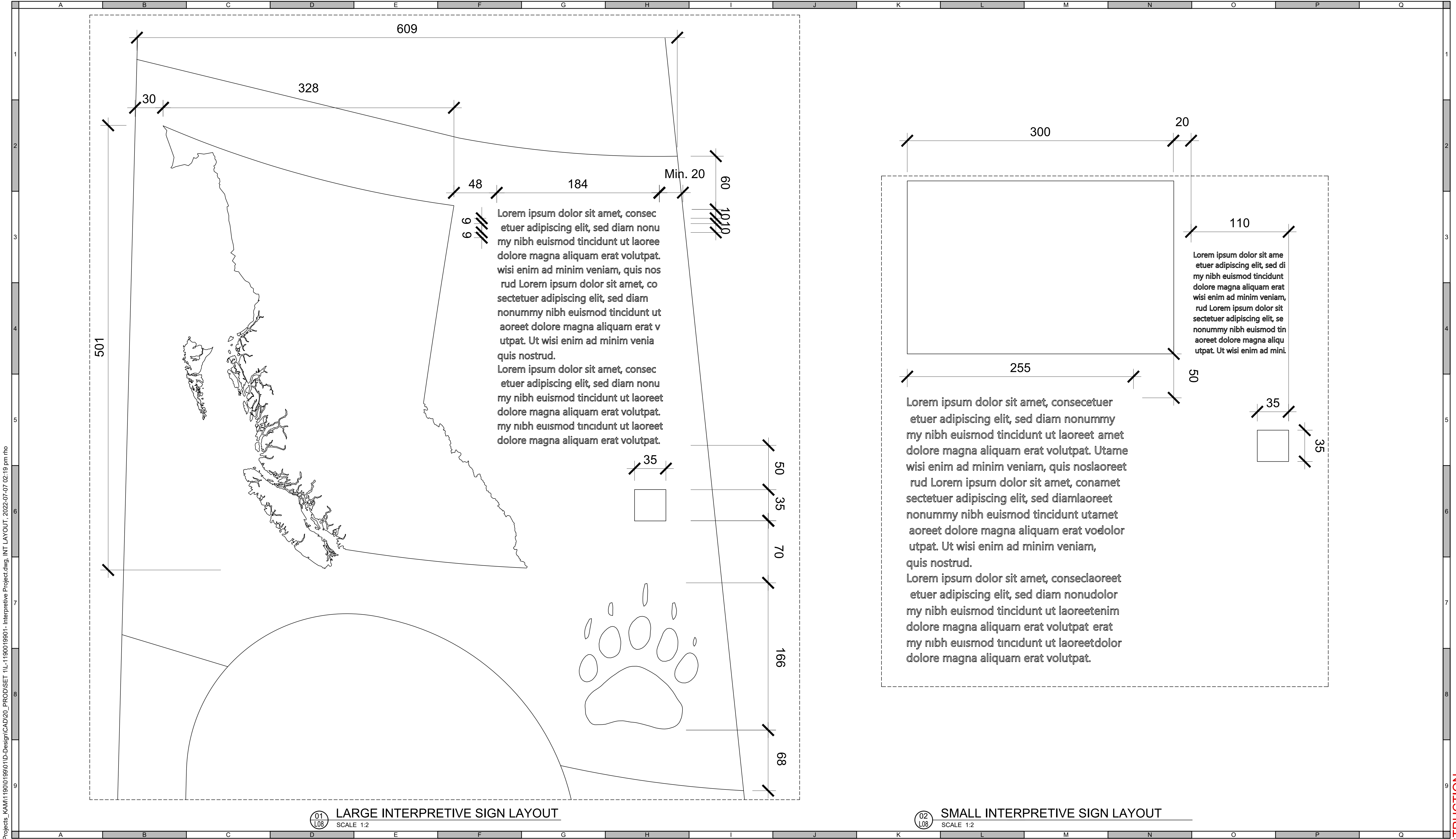
C. Larouche
S. McCoy
R. Ho

**Lhtako Dene Cultural Interpretive
Plan**
MONUMENT ENGRAVING LAYOUT

Sheet Number		12 of 15
Project Number	Drawing Number	Revision
1190.0199.01	L12	C

ANSI expand D (34.00 x 22.00 inches) 25mm

NOT FOR CONSTRUCTION



ATTENTION
This drawing is prepared for the sole use of City of Quesnel.
No representations of any kind are made by Urban Systems Ltd. or its employees to any party with whom Urban Systems Ltd. does not have a contract.

WARNING
Utilities or structures shown on this drawing were compiled from information supplied by various parties and may not be complete or accurate. Expose and conclusively confirm the location in the field all underground utilities and structures indicated on this drawing, all underground utilities in the area of the proposed work and any utilities or structures reasonably apparent from an inspection of the proposed work. Urban Systems Ltd. assumes no responsibility for loss or damage caused by third party negligence or failure to comply with the above.

SURVEY INFORMATION
Prepared by: Urban Systems Ltd.
Coordinate System: NAD83
Compilation Date: March 2022

ISSUED FOR FINAL REVIEW
JULY 07, 2022
urbansystems.ca

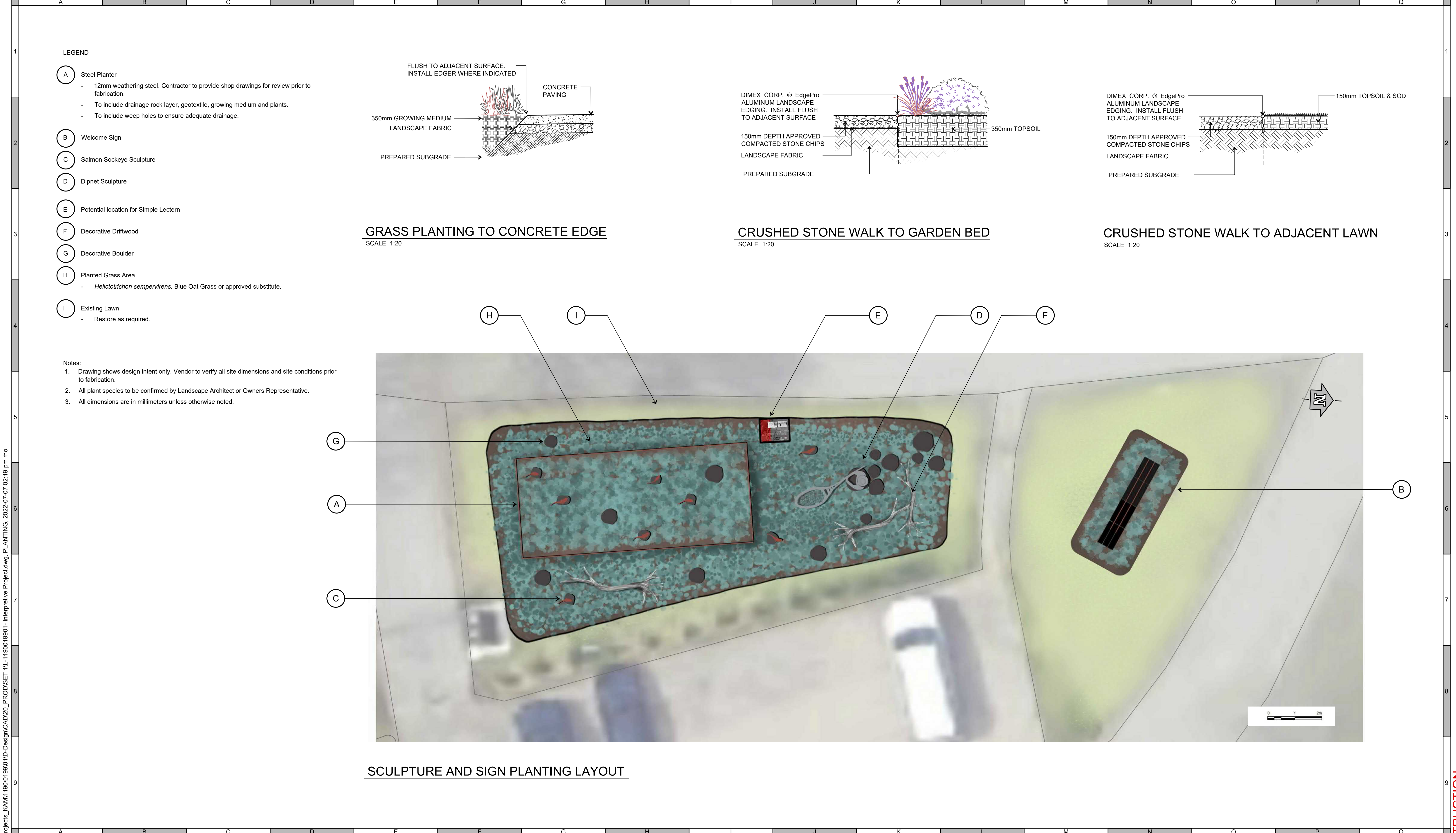
Professional Seals

#	Date	Issue / Revision	App
A	2022-03-31		REVIEW
B	2022-05-16	ISSUED FOR REVIEW	
C	2022-07-07	FINAL REVIEW	

CITY OF Quesnel

URBAN SYSTEMS	
Scale AS SHOWN	
Quality Control by	C. Larouche
Designed by	S. McCoy
Drawn by	R. Ho

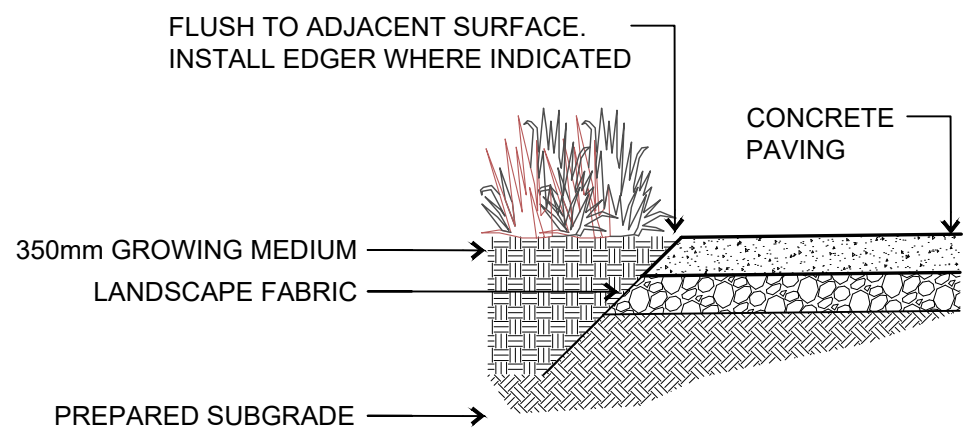
Lhtako Dene Cultural Interpretive Plan	
INTERPRETIVE SIGN LAYOUT	
Sheet Number	13 of 15
Project Number	Drawing Number
1190.0199.01	L13
	C



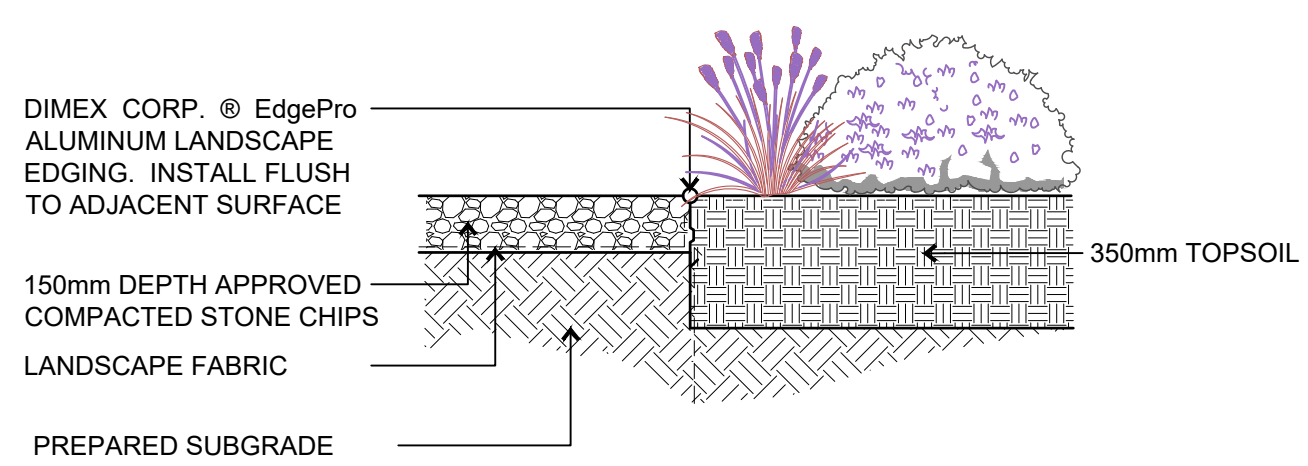
LEGEND

- A** Steel Planter
 - 12mm weathering steel. Contractor to provide shop drawings for review prior to fabrication.
 - To include drainage rock layer, geotextile, growing medium and plants.
 - To include weep holes to ensure adequate drainage.
- B** Welcome Sign
- C** Salmon Sockeye Sculpture
- D** Dipnet Sculpture
- E** Potential location for Simple Lectern
- F** Decorative Driftwood
- G** Decorative Boulder
- H** Planted Grass Area
 - *Helictotrichon sempervirens*, Blue Oat Grass or approved substitute.
- I** Existing Lawn
 - Restore as required.

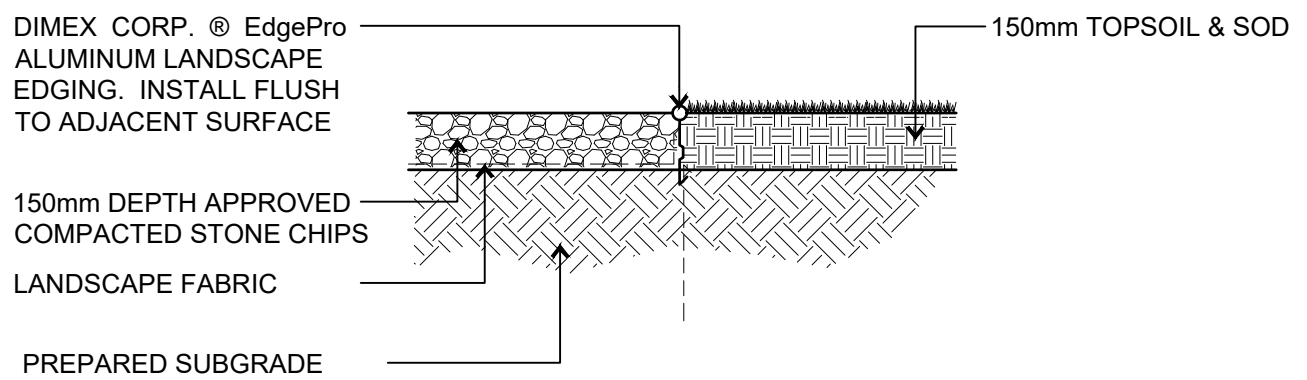
- Notes:
1. Drawing shows design intent only. Vendor to verify all site dimensions and site conditions prior to fabrication.
 2. All plant species to be confirmed by Landscape Architect or Owners Representative.
 3. All dimensions are in millimeters unless otherwise noted.



GRASS PLANTING TO CONCRETE EDGE
SCALE 1:20



CRUSHED STONE WALK TO GARDEN BED
SCALE 1:20



CRUSHED STONE WALK TO ADJACENT LAWN
SCALE 1:20

SCULPTURE AND SIGN PLANTING LAYOUT

\\usurban-systems.com\projects\Projects_KAM\1190019901\1D-Design\CAD\20_PROD\SET 1\L-1190019901 - Interpretive Project.dwg, PLANTING, 2022-07-07 02:19 pm rto

ATTENTION
This drawing is prepared for the sole use of City of Quesnel.
No representations of any kind are made by Urban Systems Ltd. or its employees to any party with whom Urban Systems Ltd. does not have a contract.

WARNING
Utilities or structures shown on this drawing were compiled from information supplied by various parties and may not be complete or accurate. Expose and conclusively confirm the location in the field all underground utilities and structures indicated on this drawing. If underground utilities in the area of the proposed work and any utilities or structures reasonably apparent from an inspection of the proposed work, Urban Systems Ltd. assumes no responsibility for loss or damage caused by third party negligence or failure to comply with the above.

SURVEY INFORMATION
Prepared by: Urban Systems Ltd
Coordinate System: NAD83
Compilation Date: March 2022

ISSUED FOR FINAL REVIEW
JULY 07, 2022
urbansystems.ca

Professional Seals

#	Date	Issue / Revision	App
A	2022-07-07	FINAL REVIEW	

CITY OF Quesnel

URBAN SYSTEMS

Scale: AS SHOWN

Quality Control by: C. Larouche
Designed by: S. McCoy
Drawn by: R. Ho

Lhtako Dene Cultural Interpretive Plan
PLANTING DETAILS

Sheet Number	14 of 15
Project Number	1190.0199.01
Drawing Number	L14
Revision	A

NOT FOR CONSTRUCTION

\\usurban-systems.com\projects\Projects_KAM\1190019901\1D-Design\CAD\20_PROD\SET 1\L-1190019901 - Interpretive Project.dwg, COST, 2022-07-07 02:19 pm rho

A	B	C	D	E	F	G	H	I	J	K	L	M	N	O	P	Q																																																																														
1	<table><tr><th>ITEM</th><th>DESCRIPTION</th><th>UNIT</th><th>EST. QTY.</th><th>UNIT PRICE \$</th><th>TOTAL \$</th></tr><tr><td colspan="6">Schedule A - Large Welcome Sign</td></tr><tr><td>A.0</td><td>Site Preparation/Rehab</td><td>I.s.</td><td>1</td><td>3,500.00</td><td>3,500.00</td></tr><tr><td>A.1</td><td>Supply & Install Concrete Footing/Reinforcement</td><td>I.s.</td><td>1</td><td>11,500.00</td><td>11,500.00</td></tr><tr><td>A.2</td><td>Supply & Install Gabion Unit (Steel Frame,Fasteners & Basalt Rock)</td><td>I.s.</td><td>1</td><td>35,000.00</td><td>35,000.00</td></tr><tr><td>A.3</td><td>Supply & Install Signage Panels</td><td>I.s.</td><td>2</td><td>7,500.00</td><td>15,000.00</td></tr><tr><td>A.4</td><td>Supply & Install Flag Pole and Flag</td><td>I.s.</td><td>2</td><td>2,000.00</td><td>4,000.00</td></tr><tr><td>A.5</td><td>350mm Growing Medium</td><td>s.m.</td><td>100</td><td>80.00</td><td>8,000.00</td></tr><tr><td>A.6</td><td>Planting</td><td>s.m.</td><td>100</td><td>40.00</td><td>4,000.00</td></tr><tr><td colspan="4">SUBTOTAL</td><td></td><td>\$81,000.00</td></tr><tr><td colspan="4">15% DESIGN & ENGINEERING COSTS</td><td></td><td>12,150.00</td></tr><tr><td colspan="4">30% CONTINGENCY</td><td></td><td>24,300.00</td></tr><tr><td colspan="4">TOTAL SCHEDULE "A"</td><td></td><td>\$117,450.00</td></tr></table>																ITEM	DESCRIPTION	UNIT	EST. QTY.	UNIT PRICE \$	TOTAL \$	Schedule A - Large Welcome Sign						A.0	Site Preparation/Rehab	I.s.	1	3,500.00	3,500.00	A.1	Supply & Install Concrete Footing/Reinforcement	I.s.	1	11,500.00	11,500.00	A.2	Supply & Install Gabion Unit (Steel Frame,Fasteners & Basalt Rock)	I.s.	1	35,000.00	35,000.00	A.3	Supply & Install Signage Panels	I.s.	2	7,500.00	15,000.00	A.4	Supply & Install Flag Pole and Flag	I.s.	2	2,000.00	4,000.00	A.5	350mm Growing Medium	s.m.	100	80.00	8,000.00	A.6	Planting	s.m.	100	40.00	4,000.00	SUBTOTAL					\$81,000.00	15% DESIGN & ENGINEERING COSTS					12,150.00	30% CONTINGENCY					24,300.00	TOTAL SCHEDULE "A"					\$117,450.00
ITEM	DESCRIPTION	UNIT	EST. QTY.	UNIT PRICE \$	TOTAL \$																																																																																									
Schedule A - Large Welcome Sign																																																																																														
A.0	Site Preparation/Rehab	I.s.	1	3,500.00	3,500.00																																																																																									
A.1	Supply & Install Concrete Footing/Reinforcement	I.s.	1	11,500.00	11,500.00																																																																																									
A.2	Supply & Install Gabion Unit (Steel Frame,Fasteners & Basalt Rock)	I.s.	1	35,000.00	35,000.00																																																																																									
A.3	Supply & Install Signage Panels	I.s.	2	7,500.00	15,000.00																																																																																									
A.4	Supply & Install Flag Pole and Flag	I.s.	2	2,000.00	4,000.00																																																																																									
A.5	350mm Growing Medium	s.m.	100	80.00	8,000.00																																																																																									
A.6	Planting	s.m.	100	40.00	4,000.00																																																																																									
SUBTOTAL					\$81,000.00																																																																																									
15% DESIGN & ENGINEERING COSTS					12,150.00																																																																																									
30% CONTINGENCY					24,300.00																																																																																									
TOTAL SCHEDULE "A"					\$117,450.00																																																																																									
2																																																																																														
3	<table><tr><td colspan="6">Schedule B - Large Monument</td></tr><tr><td>B.0</td><td>Site Preparation/Rehab</td><td>I.s.</td><td>1</td><td>2,500.00</td><td>2,500.00</td></tr><tr><td>B.1</td><td>Supply & Install Concrete Footing</td><td>I.s.</td><td>1</td><td>5,000.00</td><td>5,000.00</td></tr><tr><td>B.2</td><td>Supply & Install Basalt Column</td><td>I.s.</td><td>1</td><td>4,600.00</td><td>4,600.00</td></tr><tr><td>B.3</td><td>Supply & Install Corten Steel Collars c/w laser cutouts & formed</td><td>I.s.</td><td>1</td><td>3,000.00</td><td>3,000.00</td></tr><tr><td>B.4</td><td>Supply & Install Eagle Sculpture</td><td>I.s.</td><td>1</td><td>16,000.00</td><td>16,000.00</td></tr><tr><td>B.5</td><td>Supply & Install Graphic Components/Etching</td><td>I.s.</td><td>1</td><td>3,000.00</td><td>3,000.00</td></tr><tr><td colspan="4">SUBTOTAL</td><td></td><td>\$34,100.00</td></tr><tr><td colspan="4">15% DESIGN & ENGINEERING COSTS</td><td></td><td>5,115.00</td></tr><tr><td colspan="4">30% CONTINGENCY</td><td></td><td>10,230.00</td></tr><tr><td colspan="4">TOTAL SCHEDULE "B"</td><td></td><td>\$49,445.00</td></tr></table>																Schedule B - Large Monument						B.0	Site Preparation/Rehab	I.s.	1	2,500.00	2,500.00	B.1	Supply & Install Concrete Footing	I.s.	1	5,000.00	5,000.00	B.2	Supply & Install Basalt Column	I.s.	1	4,600.00	4,600.00	B.3	Supply & Install Corten Steel Collars c/w laser cutouts & formed	I.s.	1	3,000.00	3,000.00	B.4	Supply & Install Eagle Sculpture	I.s.	1	16,000.00	16,000.00	B.5	Supply & Install Graphic Components/Etching	I.s.	1	3,000.00	3,000.00	SUBTOTAL					\$34,100.00	15% DESIGN & ENGINEERING COSTS					5,115.00	30% CONTINGENCY					10,230.00	TOTAL SCHEDULE "B"					\$49,445.00												
Schedule B - Large Monument																																																																																														
B.0	Site Preparation/Rehab	I.s.	1	2,500.00	2,500.00																																																																																									
B.1	Supply & Install Concrete Footing	I.s.	1	5,000.00	5,000.00																																																																																									
B.2	Supply & Install Basalt Column	I.s.	1	4,600.00	4,600.00																																																																																									
B.3	Supply & Install Corten Steel Collars c/w laser cutouts & formed	I.s.	1	3,000.00	3,000.00																																																																																									
B.4	Supply & Install Eagle Sculpture	I.s.	1	16,000.00	16,000.00																																																																																									
B.5	Supply & Install Graphic Components/Etching	I.s.	1	3,000.00	3,000.00																																																																																									
SUBTOTAL					\$34,100.00																																																																																									
15% DESIGN & ENGINEERING COSTS					5,115.00																																																																																									
30% CONTINGENCY					10,230.00																																																																																									
TOTAL SCHEDULE "B"					\$49,445.00																																																																																									
4																																																																																														
5	<table><tr><td colspan="6">Schedule C - Small Monument</td></tr><tr><td>C.0</td><td>Site Preparation/Rehab</td><td>I.s.</td><td>1</td><td>1,500.00</td><td>1,500.00</td></tr><tr><td>C.1</td><td>Supply & Install Basalt Column w/ Subgrade Materials</td><td>I.s.</td><td>1</td><td>1,800.00</td><td>1,800.00</td></tr><tr><td>C.2</td><td>Supply & Install Abalone Shell & Feather, Fasteners</td><td>I.s.</td><td>1</td><td>5,000.00</td><td>5,000.00</td></tr><tr><td>C.3</td><td>Supply & Install Graphic Components/Etching</td><td>I.s.</td><td>1</td><td>2,500.00</td><td>2,500.00</td></tr><tr><td colspan="4">SUBTOTAL</td><td></td><td>\$10,800.00</td></tr><tr><td colspan="4">15% DESIGN & ENGINEERING COSTS</td><td></td><td>1,620.00</td></tr><tr><td colspan="4">30% CONTINGENCY</td><td></td><td>3,240.00</td></tr><tr><td colspan="4">TOTAL SCHEDULE "C"</td><td></td><td>\$15,660.00</td></tr></table>																Schedule C - Small Monument						C.0	Site Preparation/Rehab	I.s.	1	1,500.00	1,500.00	C.1	Supply & Install Basalt Column w/ Subgrade Materials	I.s.	1	1,800.00	1,800.00	C.2	Supply & Install Abalone Shell & Feather, Fasteners	I.s.	1	5,000.00	5,000.00	C.3	Supply & Install Graphic Components/Etching	I.s.	1	2,500.00	2,500.00	SUBTOTAL					\$10,800.00	15% DESIGN & ENGINEERING COSTS					1,620.00	30% CONTINGENCY					3,240.00	TOTAL SCHEDULE "C"					\$15,660.00																								
Schedule C - Small Monument																																																																																														
C.0	Site Preparation/Rehab	I.s.	1	1,500.00	1,500.00																																																																																									
C.1	Supply & Install Basalt Column w/ Subgrade Materials	I.s.	1	1,800.00	1,800.00																																																																																									
C.2	Supply & Install Abalone Shell & Feather, Fasteners	I.s.	1	5,000.00	5,000.00																																																																																									
C.3	Supply & Install Graphic Components/Etching	I.s.	1	2,500.00	2,500.00																																																																																									
SUBTOTAL					\$10,800.00																																																																																									
15% DESIGN & ENGINEERING COSTS					1,620.00																																																																																									
30% CONTINGENCY					3,240.00																																																																																									
TOTAL SCHEDULE "C"					\$15,660.00																																																																																									
6																																																																																														
7	<table><tr><td colspan="6">Schedule D - Large Vertical Interpretive Sign</td></tr><tr><td>D.0</td><td>Site Preparation/Rehab</td><td>I.s.</td><td>1</td><td>2,000.00</td><td>2,000.00</td></tr><tr><td>D.1</td><td>Supply & Install Concrete Footing</td><td>I.s.</td><td>1</td><td>4,000.00</td><td>4,000.00</td></tr><tr><td>D.2</td><td>Supply & Install Signage Panels (Corten & SS)</td><td>I.s.</td><td>1</td><td>4,450.00</td><td>4,450.00</td></tr><tr><td>D.3</td><td>Supply & Install Abalone Shell & Feather, Fasteners</td><td>I.s.</td><td>1</td><td>5,000.00</td><td>5,000.00</td></tr><tr><td>D.4</td><td>Supply & Install Graphic Components</td><td>I.s.</td><td>1</td><td>1,000.00</td><td>1,000.00</td></tr><tr><td colspan="4">SUBTOTAL</td><td></td><td>\$16,450.00</td></tr><tr><td colspan="4">15% DESIGN & ENGINEERING COSTS</td><td></td><td>2,467.50</td></tr><tr><td colspan="4">30% CONTINGENCY</td><td></td><td>4,935.00</td></tr><tr><td colspan="4">TOTAL SCHEDULE "D"</td><td></td><td>\$23,852.50</td></tr></table>																Schedule D - Large Vertical Interpretive Sign						D.0	Site Preparation/Rehab	I.s.	1	2,000.00	2,000.00	D.1	Supply & Install Concrete Footing	I.s.	1	4,000.00	4,000.00	D.2	Supply & Install Signage Panels (Corten & SS)	I.s.	1	4,450.00	4,450.00	D.3	Supply & Install Abalone Shell & Feather, Fasteners	I.s.	1	5,000.00	5,000.00	D.4	Supply & Install Graphic Components	I.s.	1	1,000.00	1,000.00	SUBTOTAL					\$16,450.00	15% DESIGN & ENGINEERING COSTS					2,467.50	30% CONTINGENCY					4,935.00	TOTAL SCHEDULE "D"					\$23,852.50																		
Schedule D - Large Vertical Interpretive Sign																																																																																														
D.0	Site Preparation/Rehab	I.s.	1	2,000.00	2,000.00																																																																																									
D.1	Supply & Install Concrete Footing	I.s.	1	4,000.00	4,000.00																																																																																									
D.2	Supply & Install Signage Panels (Corten & SS)	I.s.	1	4,450.00	4,450.00																																																																																									
D.3	Supply & Install Abalone Shell & Feather, Fasteners	I.s.	1	5,000.00	5,000.00																																																																																									
D.4	Supply & Install Graphic Components	I.s.	1	1,000.00	1,000.00																																																																																									
SUBTOTAL					\$16,450.00																																																																																									
15% DESIGN & ENGINEERING COSTS					2,467.50																																																																																									
30% CONTINGENCY					4,935.00																																																																																									
TOTAL SCHEDULE "D"					\$23,852.50																																																																																									
8																																																																																														
9	<table><tr><td colspan="6">Schedule E - Medium Vertical Interpretive Sign</td></tr><tr><td>E.0</td><td>Site Preparation/Rehab</td><td>I.s.</td><td>1</td><td>1,500.00</td><td>1,500.00</td></tr><tr><td>E.1</td><td>Supply & Install Concrete Footing</td><td>I.s.</td><td>1</td><td>3,500.00</td><td>3,500.00</td></tr><tr><td>E.2</td><td>Supply & Install Signage Panels (Corten & SS)</td><td>I.s.</td><td>1</td><td>4,450.00</td><td>4,450.00</td></tr><tr><td>E.3</td><td>Supply & Install Graphic Components</td><td>I.s.</td><td>1</td><td>1,000.00</td><td>1,000.00</td></tr><tr><td colspan="4">SUBTOTAL</td><td></td><td>\$10,450.00</td></tr><tr><td colspan="4">15% DESIGN & ENGINEERING COSTS</td><td></td><td>1,567.50</td></tr><tr><td colspan="4">30% CONTINGENCY</td><td></td><td>3,135.00</td></tr><tr><td colspan="4">TOTAL SCHEDULE "E"</td><td></td><td>\$15,152.50</td></tr></table>																Schedule E - Medium Vertical Interpretive Sign						E.0	Site Preparation/Rehab	I.s.	1	1,500.00	1,500.00	E.1	Supply & Install Concrete Footing	I.s.	1	3,500.00	3,500.00	E.2	Supply & Install Signage Panels (Corten & SS)	I.s.	1	4,450.00	4,450.00	E.3	Supply & Install Graphic Components	I.s.	1	1,000.00	1,000.00	SUBTOTAL					\$10,450.00	15% DESIGN & ENGINEERING COSTS					1,567.50	30% CONTINGENCY					3,135.00	TOTAL SCHEDULE "E"					\$15,152.50																								
Schedule E - Medium Vertical Interpretive Sign																																																																																														
E.0	Site Preparation/Rehab	I.s.	1	1,500.00	1,500.00																																																																																									
E.1	Supply & Install Concrete Footing	I.s.	1	3,500.00	3,500.00																																																																																									
E.2	Supply & Install Signage Panels (Corten & SS)	I.s.	1	4,450.00	4,450.00																																																																																									
E.3	Supply & Install Graphic Components	I.s.	1	1,000.00	1,000.00																																																																																									
SUBTOTAL					\$10,450.00																																																																																									
15% DESIGN & ENGINEERING COSTS					1,567.50																																																																																									
30% CONTINGENCY					3,135.00																																																																																									
TOTAL SCHEDULE "E"					\$15,152.50																																																																																									

Schedule F - Simple Lectern					
F.0	Site Preparation/Rehab	I.s.	1	1,000.00	1,000.00
F.1	Supply & Install Concrete Footing	I.s.	1	900.00	900.00
F.2	Supply & Install Signage Assembly	I.s.	1	2,500.00	2,500.00
F.3	Supply & Install Graphic Components	I.s.	1	500.00	500.00
SUBTOTAL					\$4,900.00
15% DESIGN & ENGINEERING COSTS					735.00
30% CONTINGENCY					1,470.00
TOTAL SCHEDULE "F"					\$7,105.00
Schedule G - Round Gabion Bench					
G.0	Site Preparation/Rehab	I.s.	1	800.00	800.00
G.1	Supply & Install Aggregate Pad	I.s.	1	1,200.00	1,200.00
G.2	Supply & Install Gabion Frame & Rock Fill	I.s.	1	3,000.00	3,000.00
G.3	Supply & Install Corten Laser Cut Panel	I.s.	1	2,200.00	2,200.00
G.4	Supply & Install Wood Components	I.s.	1	1,000.00	1,000.00
SUBTOTAL					\$8,200.00
15% DESIGN & ENGINEERING COSTS					1,230.00
30% CONTINGENCY					2,460.00
TOTAL SCHEDULE "G"					\$11,890.00
Schedule H - Dip Net and Sockeye Feature					
H.0	Site Preparation/Rehab	I.s.	1	8,500.00	8,500.00
H.1	Supply & Install Dip Net Sculpture and Basalt Column (3) Base	I.s.	1	34,500.00	34,500.00
H.2	Supply & Install School of Sockeye Sculpture	I.s.	11	3,000.00	33,000.00
H.3	Steel Planter	I.s.	1	20,500.00	20,500.00
H.4	350mm Growing Medium and Planting	s.m.	100	120.00	12,000.00
H.5	Decorative Boulder and Driftwood Allowance	I.s.	1	6,000.00	6,000.00
SUBTOTAL					\$114,500.00
15% DESIGN & ENGINEERING COSTS					17,175.00
30% CONTINGENCY					34,350.00
TOTAL SCHEDULE "H"					\$166,025.00
Schedule I - Fishing Pier Interpretive Feature					
I.0	Site Preparation/Rehab	I.s.	1	15,000.00	15,000.00
I.1	Supply & Install Pier	I.s.	1	150,000.00	150,000.00
I.2	Supply & Install Traditional Life Sculpture TBD	I.s.	1	30,000.00	30,000.00
I.3	Supply & Install School of Sockeye Sculpture	I.s.	3	3,000.00	9,000.00
SUBTOTAL					\$204,000.00
15% DESIGN & ENGINEERING COSTS					30,600.00
30% CONTINGENCY					61,200.00
TOTAL SCHEDULE "I"					\$295,800.00
Schedule J - Pithouse/Amphitheatre Interpretive Experience					
J.0	Site Preparation/Rehab	I.s.	1	10,000.00	10,000.00
J.1	Supply & Install Pithouse Structure	I.s.	1	200,000.00	200,000.00
SUBTOTAL					\$210,000.00
15% DESIGN & ENGINEERING COSTS					31,500.00
30% CONTINGENCY					63,000.00
TOTAL SCHEDULE "J"					\$304,500.00

Schedule K - Planting and Traditional Medicinal Gardens					
K.0	Site Preparation/Sod Removal	I.s.	1	3,000.00	3,000.00
K.1	350mm Growing Medium	s.m.	150	80.00	12,000.00
K.2	Planting	s.m.	150	40.00	6,000.00
K.3	Aluminum Edging	I.m.	210	35.00	2,500.00
K.4	Compacted Aggregate Path	I.m.	270	35.00	3,500.00
SUBTOTAL					\$27,000.00
15% DESIGN & ENGINEERING COSTS					4,050.00
30% CONTINGENCY					8,100.00
TOTAL SCHEDULE "K"					\$39,150.00
Schedule L - Pit House Styled Seasonal Structure					
L.0	Site Preparation/Rehab	I.s.	1	8,000.00	8,000.00
L.1	Allowance to Supply & Install Pithouse Structure	I.s.	1	60,000.00	60,000.00
SUBTOTAL					\$68,000.00
15% DESIGN & ENGINEERING COSTS					10,200.00
30% CONTINGENCY					20,400.00
TOTAL SCHEDULE "L"					\$98,600.00
SUMMARY					
TOTAL SCHEDULE "A"			1		117,450.00
TOTAL SCHEDULE "B"			1		15,660.00
TOTAL SCHEDULE "C"			2		31,320.00
TOTAL SCHEDULE "D"			1		23,852.50
TOTAL SCHEDULE "E"			2		30,305.00
TOTAL SCHEDULE "F"			11		78,155.00
TOTAL SCHEDULE "G"			1		11,890.00
TOTAL SCHEDULE "H"			1		166,025.00
TOTAL SCHEDULE "I"			1		295,800.00
TOTAL SCHEDULE "J"			1		304,500.00
TOTAL SCHEDULE "K"			1		39,150.00
TOTAL SCHEDULE "L"			1		98,600.00
TOTAL ESTIMATED COST					\$1,212,707.50
Quesnel Interpretive Signage Preliminary Cost Estimate					
7/7/2022 Prepared by: Urban Systems Ltd.					
Notes:					
Prices are based on preliminary concept design for Indigenous Interpretive project for the City of Quesnel dated July 7, 2022					
Prices include unit rates that are adjusted to anticipate markups for small batch procurement given project scale and possibility for phasing implementation.					
Prices exclude general Contractor costs ie. Mobilization, QC, Survey (as needed), De-mobilization etc.					
Where line item indicates "Allowance", the design requires further development to confirm units and/or costing.					
All plant species to be confirmed by Landscape Architect or Owner Representative.					
Cost estimate does not include GST.					

ISSUED FOR
FINAL REVIEW
JULY 07, 2022
urbansystems.ca

Professional Seals

#	Date	Issue / Revision	App
A	2022-03-31		REVIEW
B	2022-05-16		ISSUED FOR REVIEW
C	2022-07-07		FINAL REVIEW



URBAN
SYSTEMS

Scale
AS SHOWN

Quality Control by
Designed by
Drawn by

C. Larouche
S. McCoy
R. Ho

Lhtako Dene Cultural Interpretive
Plan
COST ESTIMATE

Sheet Number 15 of 15
Project Number 1190.0199.01 Drawing Number L15 Revision C

ANSI expand D (34.00 x 22.00 Inches) 25mm

Schedule K - Planting and Traditional Medicinal Gardens

K.0	Site Preparation/Sod Removal	I.s.	1	3,000.00	3,000.00
K.1	350mm Growing Medium	s.m.	150	80.00	12,000.00
K.2	Planting	s.m.	150	40.00	6,000.00
K.3	Aluminum Edging	I.m.	210	35.00	2,500.00
K.4	Compacted Aggregate Path	I.m.	270	35.00	3,500.00
SUBTOTAL					\$27,000.00
15% DESIGN & ENGINEERING COSTS					4,050.00
30% CONTINGENCY					8,100.00
TOTAL SCHEDULE "K"					\$39,150.00

Schedule L - Pit House Styled Seasonal Structure

L.0	Site Preparation/Rehab	I.s.	1	8,000.00	8,000.00
L.1	Allowance to Supply & Install Pithouse Structure	I.s.	1	60,000.00	60,000.00
SUBTOTAL					\$68,000.00
15% DESIGN & ENGINEERING COSTS					10,200.00
30% CONTINGENCY					20,400.00
TOTAL SCHEDULE "L"					\$98,600.00

SUMMARY

TOTAL SCHEDULE "A"	1	117,450.00
TOTAL SCHEDULE "B"	1	15,660.00
TOTAL SCHEDULE "C"	2	31,320.00
TOTAL SCHEDULE "D"	1	23,852.50
TOTAL SCHEDULE "E"	2	30,305.00
TOTAL SCHEDULE "F"	11	78,155.00
TOTAL SCHEDULE "G"	1	11,890.00
TOTAL SCHEDULE "H"	1	166,025.00
TOTAL SCHEDULE "I"	1	295,800.00
TOTAL SCHEDULE "J"	1	304,500.00
TOTAL SCHEDULE "K"	1	39,150.00
TOTAL SCHEDULE "L"	1	98,600.00
TOTAL ESTIMATED COST		\$1,212,707.50

Quesnel Interpretive Signage
Preliminary Cost Estimate

7/7/2022
Prepared by:
Urban Systems Ltd.

Notes:

Prices are based on preliminary concept design for Indigenous Interpretive project for the City of Quesnel dated July 7, 2022.
Prices include unit rates that are adjusted to anticipate markups for small batch procurement given project scale and possibility for phasing implementation.

Prices exclude general Contractor costs ie. Mobilization, QC, Survey (as needed), De-mobilization etc.

Where line item indicates "Allowance", the design requires further development to confirm units and/or costing.

All plant species to be confirmed by Landscape Architect or Owner Representative.

Cost estimate does not include GST.

NOT FOR CONSTRUCTION