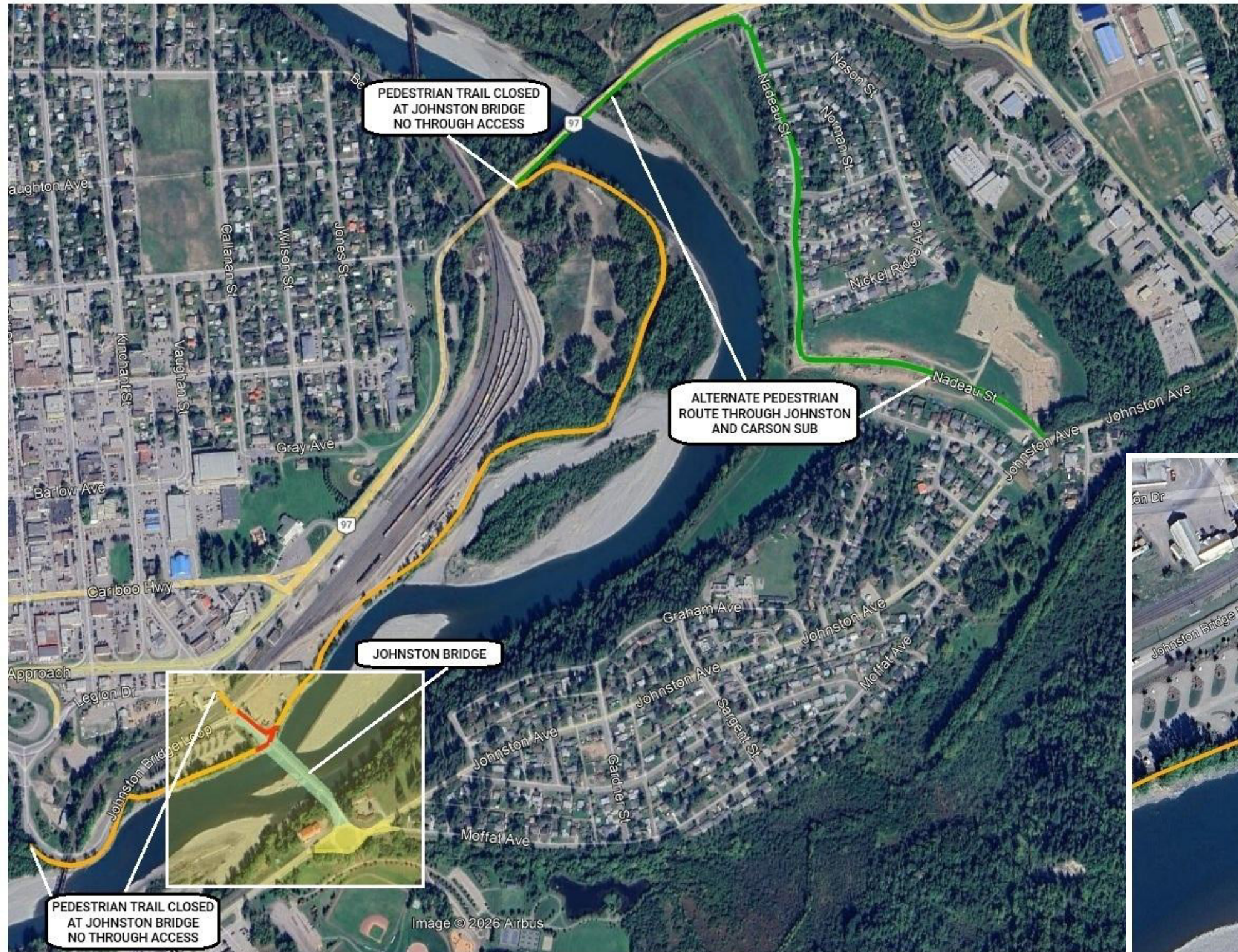


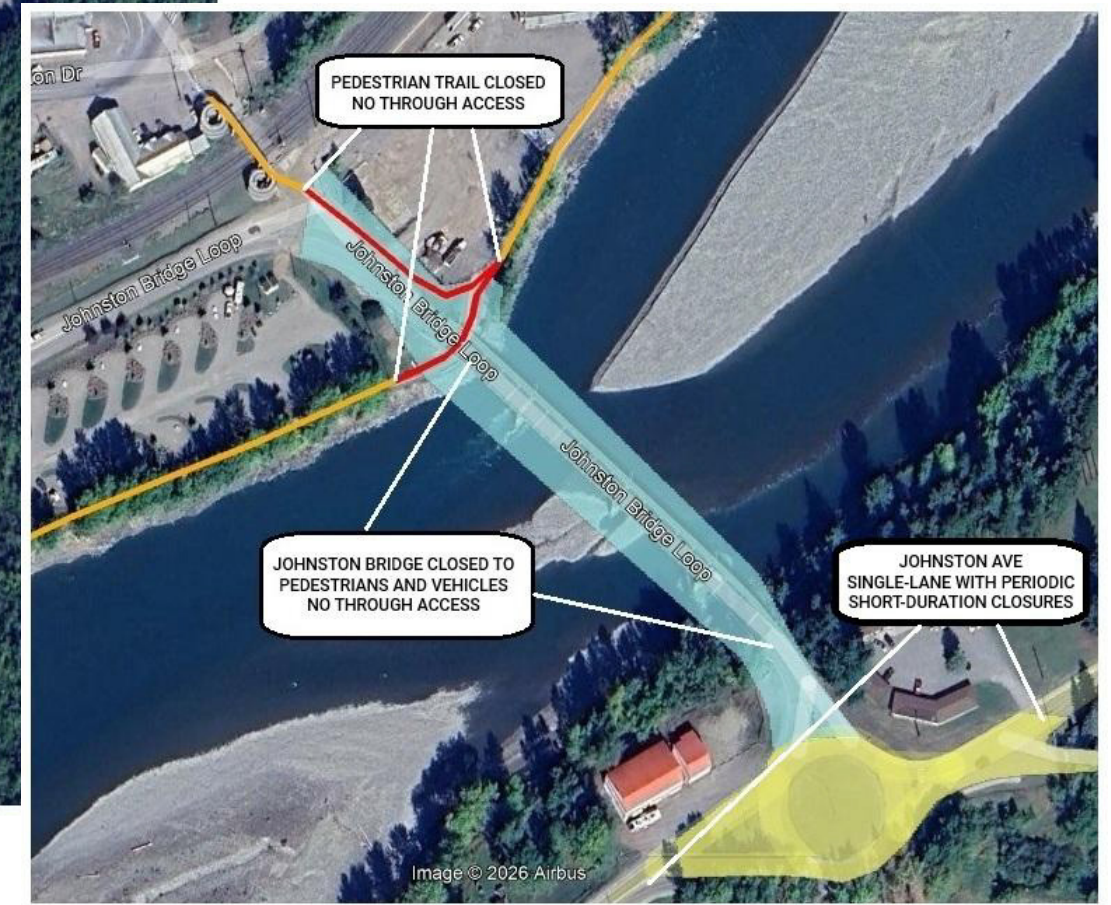
# JOHNSTON BRIDGE REPAIRS and WATERMAIN REPLACEMENT



## BRIDGE & TRAIL CLOSURE NOTICE

June 2026 to Winter 2026

- Johnston Bridge will be closed in both directions to all pedestrian and vehicle traffic for the duration of the project.
- The pedestrian trail at the north end of Johnston Bridge will be closed—no through access; please plan an alternate route.
- Johnston Avenue will remain open; periodic short duration closures and single lane alternating traffic will be required for project activities.
- Signage will be in place throughout the project.
- Thank you for your patience and cooperation while this work is completed.



FOR QUESTIONS AND CONCERNS CONTACT THE CITY OF QUESNEL PUBLIC WORKS OFFICE 2509926330